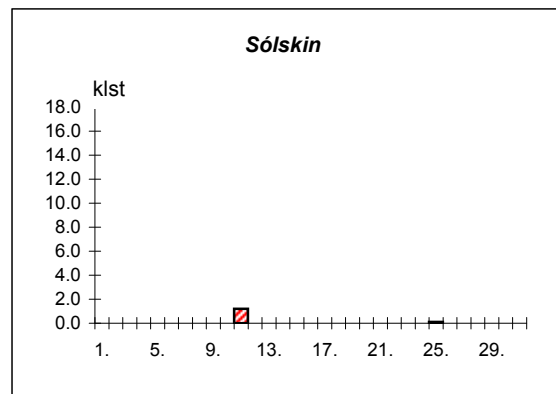
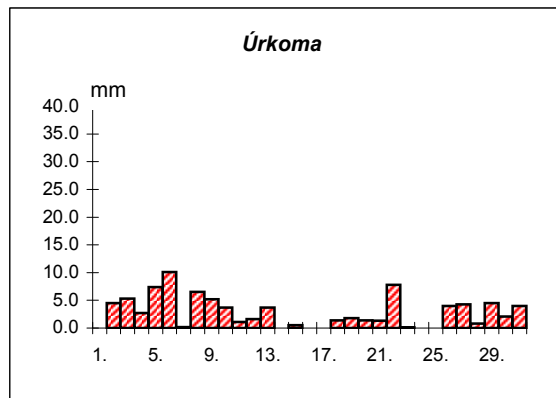
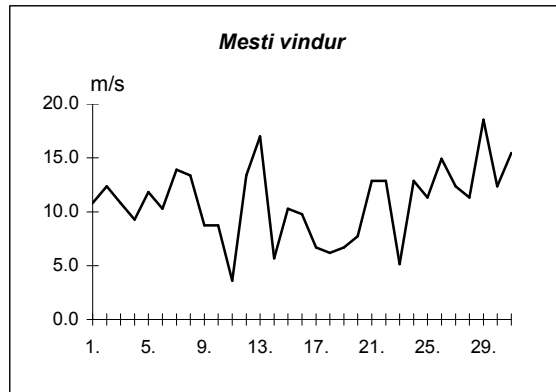
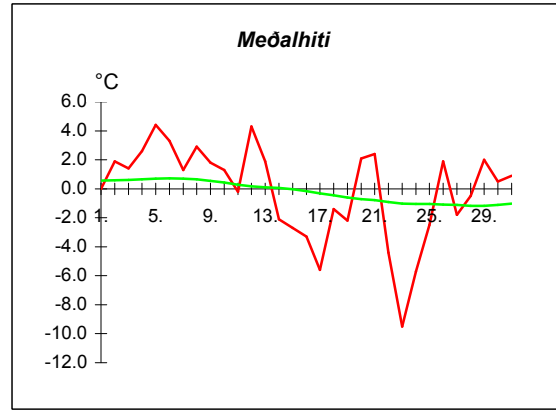
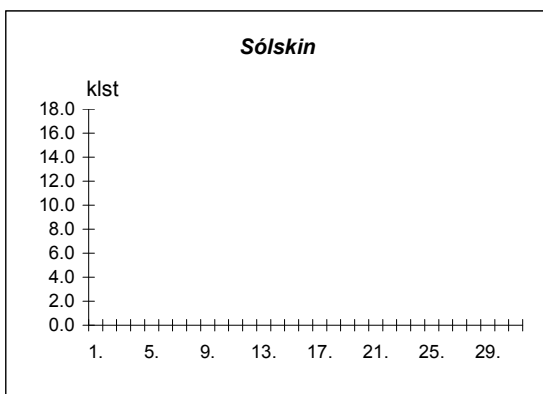
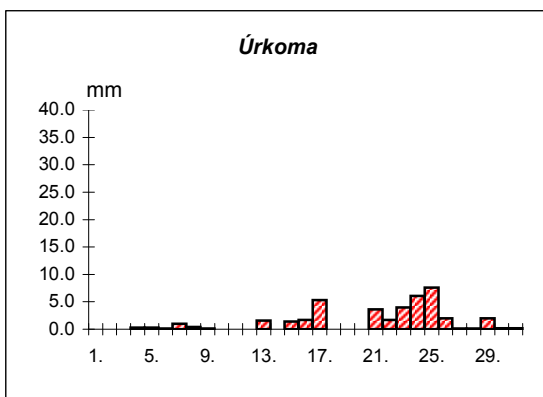
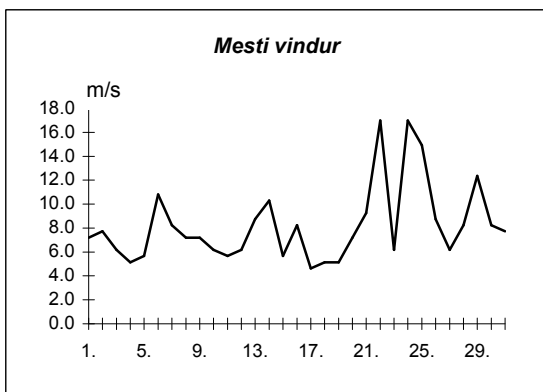
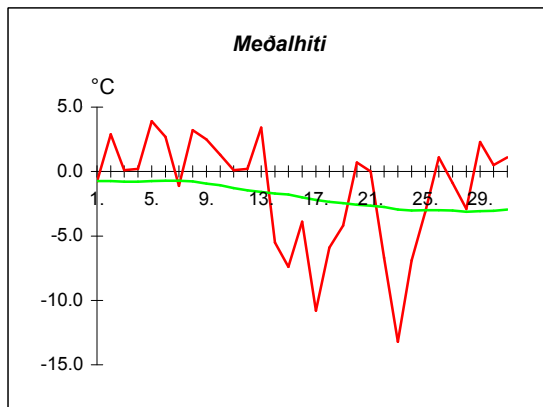


Dags	Meðalhiti (°C)	Hámark (°C)	Lágmark (°C)	Úrkoma (mm)	Úrkomutegund	Snjódýpt (cm)	Snjöhula (0-4)	Sólskin(klst)	Meðalvindur (m/s)	Mesti vindur (m/s)	Hviða (m/s)
1.	0.0	4.2	-5.0	---			0	0.0	4.8	10.8	16.5
2.	1.9	4.5	0.4	4.5	sl		0	0.0	6.7	12.4	18.5
3.	1.4	3.2	-1.0	5.3	sl	2	4	0.0	5.6	10.8	16.5
4.	2.6	5.1	-0.9	2.7	sl	4	2	0.0	4.9	9.3	14.9
5.	4.4	6.2	1.2	7.4	sl		0	0.0	6.4	11.8	21.1
6.	3.3	6.5	2.1	10.1	ri		0	0.0	5.1	10.3	16.5
7.	1.3	6.8	-3.9	0.2	sl		0	0.0	7.9	13.9	22.7
8.	2.9	7.7	0.6	6.5	sl		0	0.0	6.8	13.4	21.1
9.	1.8	4.3	0.6	5.2	sl		0	0.0	3.0	8.8	14.4
10.	1.3	2.7	0.6	3.7	sl	2	4	0.0	3.0	8.8	15.4
11.	-0.2	1.7	-1.5	1.1	sl	3	4	1.2	2.2	3.6	5.7
12.	4.3	9.0	-2.6	1.6	ri		2	0.0	7.3	13.4	20.6
13.	1.9	5.0	1.1	3.7	sl		0	0.0	8.9	17.0	25.2
14.	-2.1	2.8	-2.8	0.0			2	0.0	2.6	5.7	8.2
15.	-2.7	-1.4	-4.9	0.5	sn	1	4	0.0	4.1	10.3	17.0
16.	-3.3	1.2	-4.3	0.0			2	0.0	5.7	9.8	16.0
17.	-5.6	-2.6	-7.7	---			4	0.0	3.5	6.7	9.3
18.	-1.4	1.0	-6.7	1.4	sn	1	4	0.0	3.4	6.2	9.8
19.	-2.2	0.1	-6.0	1.8	sn	6	4	0.0	3.6	6.7	9.8
20.	2.1	3.2	-1.3	1.4	sl	5	4	0.0	4.8	7.7	12.9
21.	2.4	3.8	1.1	1.3	sl	0	2	0.0	4.9	12.9	18.5
22.	-4.4	2.7	-4.1	7.8	sl		2	0.0	5.5	12.9	20.6
23.	-9.5	-3.7	-11.5	0.1	sn		2	0.0	2.7	5.1	8.8
24.	-5.7	-3.6	-9.9	0.0			4	0.0	6.2	12.9	20.6
25.	-2.5	-1.9	-4.2	0.0			2	0.1	4.4	11.3	17.5
26.	1.9	4.5	-4.1	4.0	sl		0	0.0	6.2	14.9	22.7
27.	-1.8	2.4	-3.4	4.3	sl	5	4	0.0	8.2	12.4	20.6
28.	-0.5	0.7	-4.8	0.8	sn	3	4	0.0	6.7	11.3	17.5
29.	2.0	4.7	0.1	4.5	sl	1	2	0.0	9.3	18.5	25.2
30.	0.5	2.4	-1.6	2.1	sl	4	4	0.0	5.8	12.4	19.0
31.	0.9	2.2	-0.8	4.0	sl	6	4	0.0	5.6	15.4	23.2



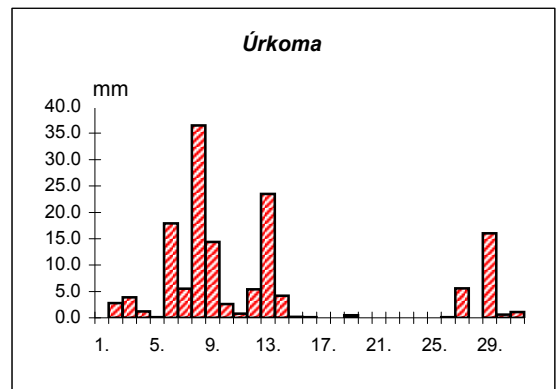
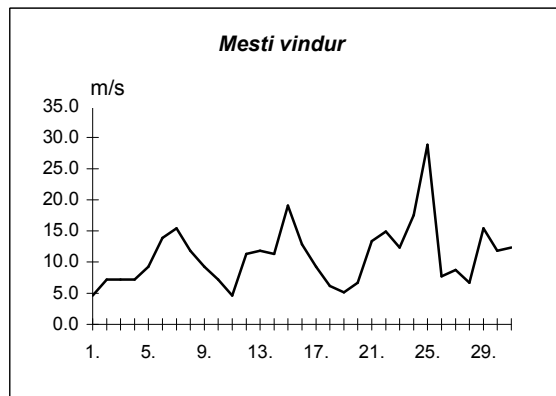
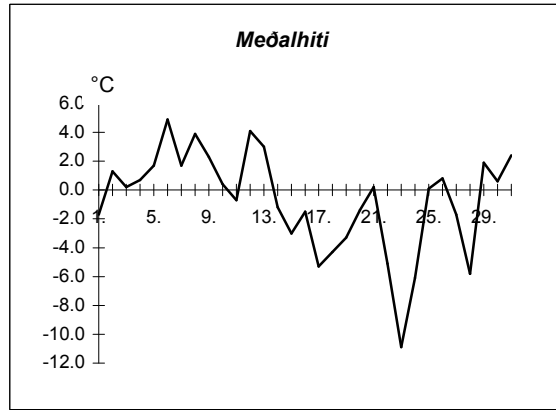
Meðalhiti	=	-0.2 °C
Frávik frá meðaltali 1931-60	=	-1.1 °C
Meðalhámarkshiti	=	2.8 °C
Meðallágmarkshiti	=	-2.8 °C
Úrkomumagn	=	86.0 mm
Hlutfall úrkomu af meðaltali 1931-60	=	106.0 %
Meðalvindhraði	=	5.4 m/s
Sólskinsstundir	=	1.3 klst

Dags	Meðalhiti (°C)	Hámark (°C)	Lágmark (°C)	Úrkoma (mm)	Úrkomutegund	Snjódýpt (cm)	Snjöhula (0-4)	Sólskin(klst)	Meðalvindur (m/s)	Mesti vindur (m/s)	Hviða (m/s)
1.	-0.8	2.5	-6.0	0.0			0	0.0	3.3	7.2	12.9
2.	2.9	6.0	2.2	0.0			0	0.0	4.6	7.7	13.4
3.	0.1	2.7	-1.0	0.0			0	0.0	3.2	6.2	13.4
4.	0.2	5.5	-2.7	0.3	sn		0	0.0	2.1	5.1	8.2
5.	3.9	7.9	2.3	0.3	sn		0	0.0	3.6	5.7	9.8
6.	2.7	5.5	2.5	0.1	ri		0	0.0	5.2	10.8	16.5
7.	-1.1	2.5	-4.0	1.0	sl		0	0.0	3.1	8.2	12.9
8.	3.2	6.2	-2.2	0.4	sl		0	0.0	4.0	7.2	13.4
9.	2.5	5.0	1.0	0.1	ri		2	0.0	3.9	7.2	14.9
10.	1.3	3.6	-0.5	---			2	0.0	3.2	6.2	10.8
11.	0.1	3.0	-0.4	---			4	0.0	3.4	5.7	10.8
12.	0.2	4.0	-4.5	0.0			0	0.0	2.6	6.2	11.8
13.	3.4	9.2	2.7	1.6	sl		0	0.0	5.6	8.8	17.5
14.	-5.5	5.0	-6.4	0.0			0	0.0	5.6	10.3	14.9
15.	-7.4	-5.0	-11.5	1.4	sn	2	2	0.0	1.8	5.7	10.3
16.	-3.9	-0.4	-5.4	1.7	sn	3	2	0.0	3.4	8.2	12.9
17.	-10.8	1.0	-12.6	5.3	sn	14	4	0.0	1.9	4.6	6.7
18.	-5.9	0.6	-14.5	---		14	4	0.0	2.0	5.1	8.8
19.	-4.2	-0.5	-7.5	0.0			0	0.0	3.0	5.1	8.8
20.	0.7	3.0	-2.6	---			0	0.0	2.3	7.2	11.8
21.	0.0	2.0	-2.6	3.6	sn	21	4	0.0	3.0	9.3	20.1
22.	-6.7	3.0	-7.8	1.7	sl	10	4	0.0	3.6	17.0	26.8
23.	-13.2	-6.5	-16.2	4.0	sn	11	4	0.0	3.6	6.2	10.3
24.	-6.9	-5.5	-14.3	6.1	sn	26	4	0.0	6.6	17.0	25.2
25.	-3.1	-2.0	-5.9	7.6	sn	40	4	0.0	9.0	14.9	20.6
26.	1.1	6.0	-4.5	2.0	sn	45	4	0.0	4.9	8.8	15.4
27.	-0.9	6.5	-2.9	0.1	sn	33	4	0.0	3.5	6.2	12.4
28.	-2.9	-2.3	-4.6	0.1	sn	33	4	0.0	2.7	8.2	14.4
29.	2.3	5.5	-3.0	2.0	sn	34	4	0.0	4.6	12.4	22.1
30.	0.5	3.7	-0.8	0.2	sl	35	4	0.0	3.3	8.2	16.5
31.	1.1	4.0	-0.8	0.2	sn	35	4	0.0	3.3	7.7	14.9



Meðalhiti	=	-1.5 °C
Frávik frá meðaltali 1931-60	=	-1.0 °C
Meðalhámarkshiti	=	2.6 °C
Meðallágmarkshiti	=	-4.3 °C
Úrkomumagn	=	39.8 mm
Hlutfall úrkomu af meðaltali 1931-60	=	74.0 %
Meðalvindhraði	=	3.7 m/s
Sólskinsstundir	=	0.0 klst

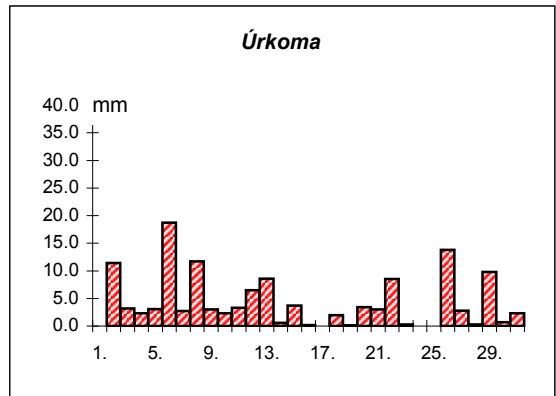
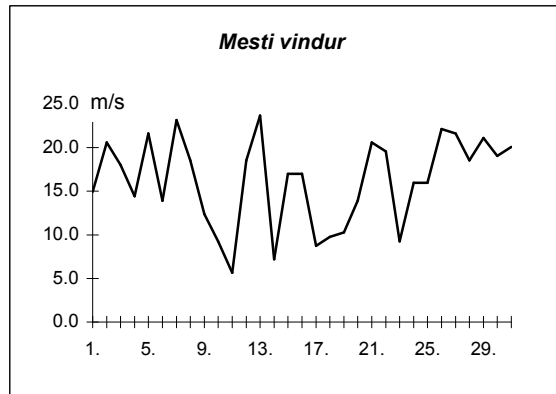
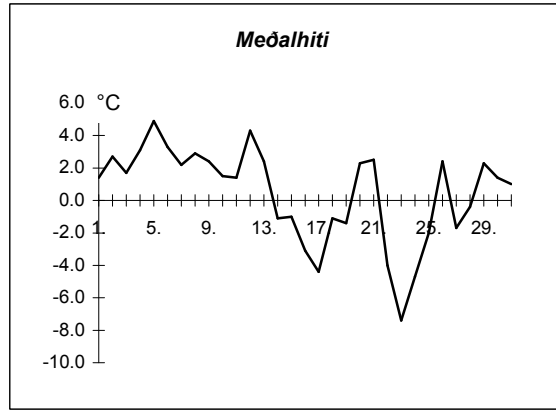
Dags	Meðalhiti (°C)	Hámark (°C)	Lágmark (°C)	Úrkoma (mm)	Úrkomutegund	Sníjódypt (cm)	Sníjöhula (0-4)	Sólskin(klíst)	Meðalvindur (m/s)	Mesti vindur (m/s)	Hviða (m/s)
1.	-1.7	0.1	-4.4	---			0		2.3	4.6	7.7
2.	1.3	4.2	-4.3	2.8	sl		0		3.0	7.2	10.3
3.	0.2	5.0	-3.8	3.9	sl		0		2.9	7.2	13.9
4.	0.7	3.0	-0.4	1.2	sn	3	4		2.6	7.2	10.8
5.	1.7	5.0	-2.5	0.1	sn	2	4		2.5	9.3	20.6
6.	4.9	7.0	2.9	17.9	ri		0		7.3	13.9	20.1
7.	1.7	6.5	-0.4	5.5	ri		0		6.5	15.4	21.1
8.	3.9	7.2	0.0	36.5	sl		0		4.8	11.8	18.5
9.	2.3	6.2	1.8	14.4	sl		0		2.6	9.3	20.1
10.	0.4	3.0	-1.3	2.6	sl	2	4		1.3	7.2	21.3
11.	-0.7	2.3	-3.0	0.8	sl		0		2.0	4.6	5.1
12.	4.1	8.3	-2.5	5.4	ri		0		4.4	11.3	15.4
13.	3.0	9.0	1.5	23.5	ri		0		6.8	11.8	19.0
14.	-1.2	4.1	-4.0	4.2	ri		0		7.3	11.3	17.5
15.	-3.0	-2.2	-4.4	0.2	sn	1	2		6.5	19.0	26.3
16.	-1.5	0.6	-3.1	0.1	sn	1	2		9.4	12.9	19.6
17.	-5.3	1.0	-6.9	---			0		4.0	9.3	12.4
18.	-4.3	-2.0	-7.5	---			0		2.7	6.2	10.8
19.	-3.3	-0.3	-6.4	0.5	sn	2	2		2.1	5.1	6.2
20.	-1.4	1.7	-4.3	---		1	2		2.6	6.7	9.3
21.	0.2	3.2	-2.8	---		1	2		3.0	13.4	23.2
22.	-5.1	1.2	-6.9	0.0			0		8.1	14.9	20.6
23.	-10.9	-5.4	-11.5	---			0		6.4	12.4	17.0
24.	-6.1	-4.9	-13.0	---			0		8.0	17.5	26.3
25.	0.1	1.5	-5.2	---			0		15.7	28.8	40.7
26.	0.8	3.1	-1.7	0.1	sn	1	4		2.6	7.7	11.3
27.	-1.7	3.5	-4.0	5.6	sn	3	4		3.1	8.8	12.4
28.	-5.8	-2.2	-9.6	---		3	4		3.2	6.7	8.2
29.	1.9	4.7	-7.2	16.0	sl	6	4		6.2	15.4	20.6
30.	0.6	4.0	-2.4	0.6	sl	6	4		4.1	11.8	17.0
31.	2.4	4.6	-1.5	1.1	ri	5	4		4.4	12.4	18.5



Meðalhiti	=	-0.7 °C
Meðalhámarkshiti	=	2.7 °C
Meðallágmarkshiti	=	-3.8 °C
Úrkomumagn	=	143.0 mm
Meðalvindhraði	=	4.8 m/s

Útgefandi : **Veðurstofa Íslands**  
 Heimilisfang : **Bústaðavegur 9**  
**150 Reykjavík**

Dags	Meðalhiti (°C)	Hámark (°C)	Lágmark (°C)	Úrkoma (mm)	Úrkomutegund	Snjódýpt (cm)	Snjöhula (0-4)	Sólskín(klist)	Meðalvindur (m/s)	Mesti vindur (m/s)	Hviða (m/s)
1.	1.4	5.1	-2.2	---			0		8.0	14.9	21.1
2.	2.7	6.7	0.3	11.4	sl		0		12.0	20.6	29.3
3.	1.7	3.8	-1.3	3.2	sl	2	2		8.5	18.0	24.7
4.	3.1	6.3	-0.7	2.3	sl	2	2		9.8	14.4	20.1
5.	4.9	7.2	2.6	3.1	sl		0		8.9	21.6	29.9
6.	3.3	7.1	1.5	18.7	sl		0		7.8	13.9	19.0
7.	2.2	9.4	-3.3	2.7	sl		0		11.8	23.2	29.3
8.	2.9	10.6	0.1	11.7	sl	0	2		9.2	18.5	30.4
9.	2.4	6.3	1.0	3.0	sl		0		6.1	12.4	19.6
10.	1.5	4.3	0.6	2.3	sl		0		5.0	9.3	19.0
11.	1.4	2.7	-0.8	3.3	sl	1	2		3.0	5.7	7.2
12.	4.3	8.8	-1.1	6.5	sl		0		9.5	18.5	25.7
13.	2.4	5.9	0.9	8.6	sl		0		14.1	23.7	30.9
14.	-1.1	3.9	-2.3	0.6	sl	1	2		3.4	7.2	20.6
15.	-1.0	0.6	-4.1	3.7	sl	4	4		9.7	17.0	20.6
16.	-3.1	1.2	-3.9	0.2	sn	4	4		8.5	17.0	22.1
17.	-4.4	-1.4	-5.7	0.0		3	4		4.3	8.8	11.3
18.	-1.1	1.6	-6.2	2.0	sn	3	4		6.4	9.8	13.4
19.	-1.4	0.7	-4.5	0.1	sn	3	4		4.9	10.3	14.4
20.	2.3	3.9	-1.0	3.4	sl	2	2		8.3	13.9	19.6
21.	2.5	4.0	1.4	3.0	sl		2		8.6	20.6	29.3
22.	-4.0	4.7	-4.4	8.5	sl	3	4		7.5	19.6	20.6
23.	-7.4	-2.6	-9.9	0.3	sn	3	4		6.5	9.3	12.4
24.	-4.7	-1.5	-8.1	0.0		3	4		9.8	16.0	21.6
25.	-2.0	0.5	-3.4	0.0		1	2		6.3	16.0	20.1
26.	2.4	5.5	-3.3	13.8	sl	1	2		11.0	22.1	23.7
27.	-1.7	3.3	-5.3	2.8	sl	6	4		14.1	21.6	31.9
28.	-0.4	1.5	-5.2	0.3	sn	5	2		12.6	18.5	22.7
29.	2.3	5.7	-3.4	9.8	sl		2		16.0	21.1	28.3
30.	1.4	4.6	-0.8	0.7	sl		2		12.0	19.0	25.2
31.	1.0	4.5	-0.2	2.3	sl	4	4		10.3	20.1	29.9



Meðalhiti	=	0.4 °C
Frávik frá meðaltali 1931-60	=	-0.8 °C
Meðalhámarkshiti	=	4.0 °C
Meðallágmarkshiti	=	-2.4 °C
Úrkomumagn	=	128.3 mm
Hlutfall úrkomu af meðaltali 1931-60	=	110.0 %
Meðalvindhraði	=	8.9 m/s