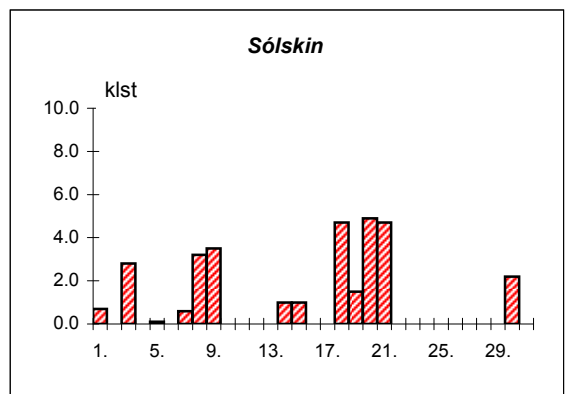
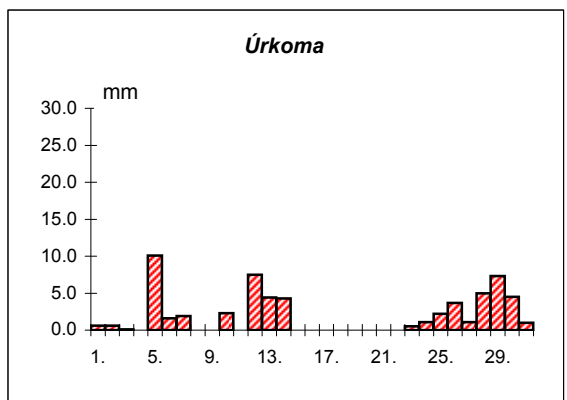
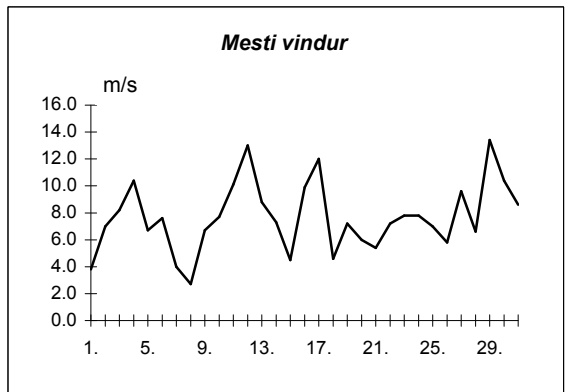
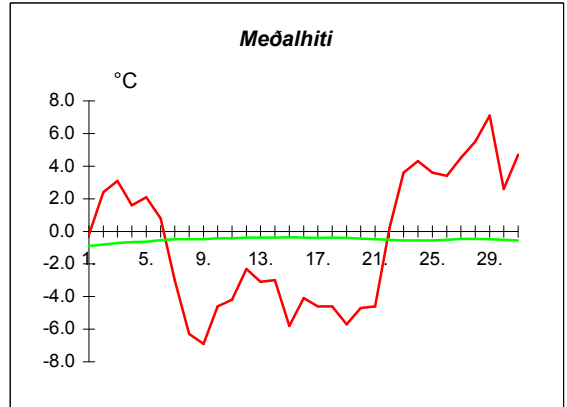
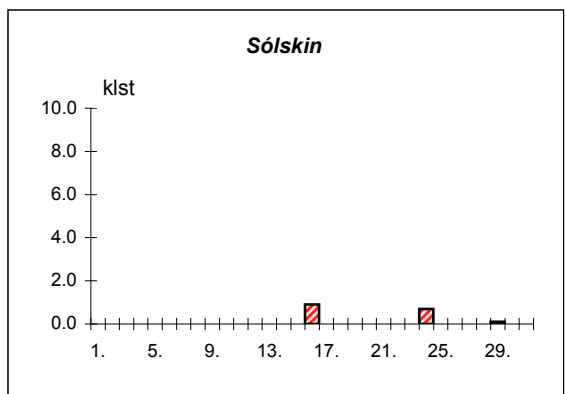
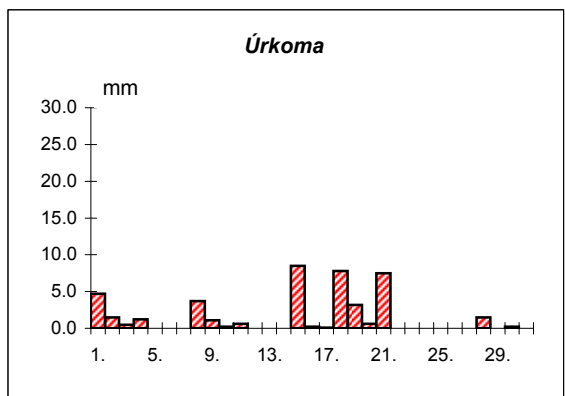
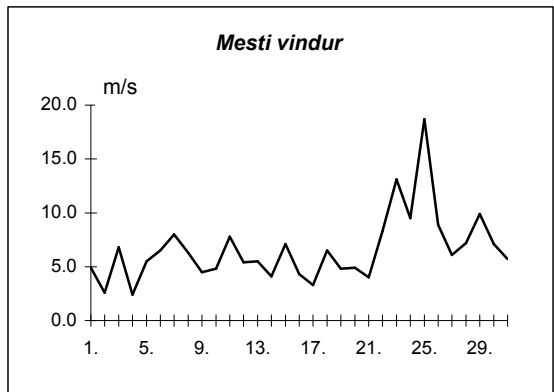
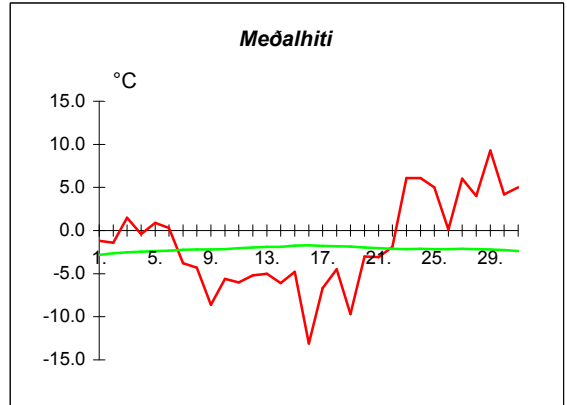


Dags	Meðalhiti (°C)	Hámark (°C)	Lágmark (°C)	Úrkoma (mm)	Úrkomutegund	Snjódýpt (cm)	Snjöhula (0-4)	Sólskin(klst)	Meðalvindur (m/s)	Mesti vindur (m/s)	Hvíða (m/s)
1.	-0.2	1.1	-2.2	0.6	ri			0.7	1.4	3.8	6.4
2.	2.4	3.2	0.6	0.6	ri			0.0	2.7	7.0	10.4
3.	3.1	4.8	1.8	0.1	ri			2.8	4.5	8.2	14.5
4.	1.6	4.0	-1.1					0.0	4.8	10.4	18.6
5.	2.1	4.0	1.2	10.1	sl			0.1	2.9	6.7	11.1
6.	0.8	2.7	-0.5	1.6	sl			0.0	3.4	7.6	12.2
7.	-3.0	0.8	-4.3	1.9	sn	5	4	0.6	1.3	4.0	5.7
8.	-6.3	-3.9	-6.8			4	4	3.2	1.6	2.7	4.4
9.	-6.9	-5.0	-9.7			5	4	3.5	3.1	6.7	11.9
10.	-4.6	-3.0	-9.6	2.3	sn	9	4	0.0	3.0	7.7	12.5
11.	-4.2	-0.2	-6.6			7	4	0.0	4.3	10.1	14.2
12.	-2.3	-1.4	-5.8	7.5	sn	15	4	0.0	7.7	13.0	19.4
13.	-3.1	-0.6	-4.8	4.4	sn	24	4	0.0	3.3	8.8	13.9
14.	-3.0	-1.3	-4.0	4.3	sn	27	4	1.0	3.2	7.3	12.2
15.	-5.8	-2.8	-8.3	0.0	sn	22	4	1.0	1.6	4.5	6.5
16.	-4.1	-2.7	-7.9			22	4	0.0	5.3	9.9	17.3
17.	-4.6	-1.0	-6.7			11	4	0.0	6.0	12.0	19.0
18.	-4.6	-2.2	-9.0			11	4	4.7	2.2	4.6	7.0
19.	-5.7	-3.6	-6.0			10	4	1.5	3.4	7.2	12.3
20.	-4.7	-0.4	-10.0			11	4	4.9	2.6	6.0	11.1
21.	-4.6	0.2	-6.4			10	4	4.7	1.0	5.4	10.4
22.	0.2	3.1	-6.5			10	4	0.0	3.2	7.2	11.1
23.	3.6	4.4	1.9	0.5	ri	0	2	0.0	4.8	7.8	14.2
24.	4.3	5.0	3.2	1.1	ri		2	0.0	3.5	7.8	12.8
25.	3.6	5.0	3.1	2.2	ri		2	0.0	5.0	7.0	10.9
26.	3.4	4.6	2.2	3.7	ri			0.0	2.7	5.8	9.2
27.	4.5	7.2	2.8	1.1	ri			0.0	4.0	9.6	15.7
28.	5.5	7.4	3.1	5.0	ri			0.0	3.3	6.6	9.8
29.	7.1	8.5	7.2	7.3	ri			0.0	9.0	13.4	19.6
30.	2.6	7.8	1.6	4.5	ri			2.2	5.0	10.4	17.7
31.	4.7	7.3	2.0	1.0	ri			0.0	5.1	8.6	15.6



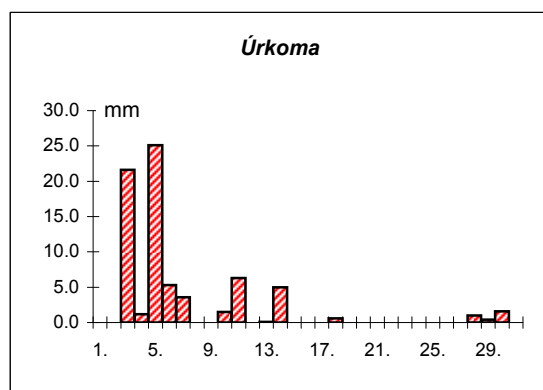
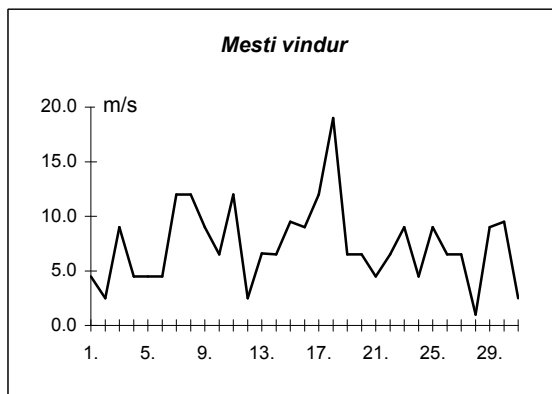
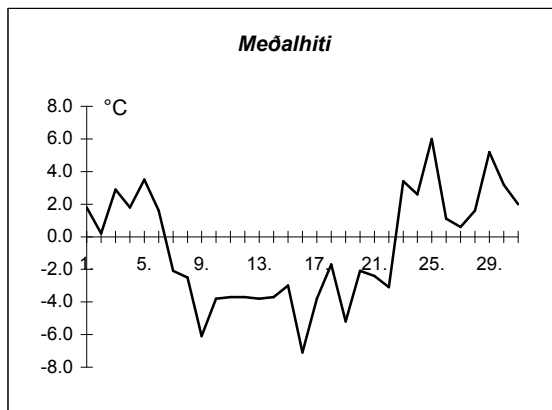
Meðalhiti	=	-0.6 °C
Frávik frá meðaltali 1961-90	=	-0.1 °C
Meðalhámarkshiti	=	1.7 °C
Meðallágmarkshiti	=	-2.8 °C
Úrkomumagn	=	59.8 mm
Hlutfall úrkomu af meðaltali 1961-90	=	78.7 %
Meðalvindhraði	=	3.7 m/s
Sólskinsstundir	=	30.9 klst

Dags	Meðalhiti (°C)	Hámark (°C)	Lágmark (°C)	Úrkoma (mm)	Úrkomutegund	Snjóþýpt (cm)	Snjóhula (0-4)	Sólskin(klst)	Meðalvindur (m/s)	Mesti vindur (m/s)	Hvíða (m/s)
1.	-1.2	1.3	-1.3	4.7	sl	4	4	0.0	1.7	4.9	7.1
2.	-1.4	0.4	-4.6	1.5	sn	5	4	0.0	0.6	2.6	4.5
3.	1.5	3.0	-0.4	0.5	sl	5	4	0.0	2.2	6.8	10.4
4.	-0.4	2.0	-3.0	1.2	ri	5	4	0.0	0.8	2.4	4.2
5.	0.9	4.0	-0.6			3	4	0.0	1.7	5.5	10.3
6.	0.3	3.5	-1.6			3	2	0.0	2.7	6.5	10.4
7.	-3.8	0.5	-5.2	0.0	sn	3	2	0.0	5.2	8.0	12.2
8.	-4.3	-2.5	-5.0	3.7	sn	5	4	0.0	2.4	6.3	9.4
9.	-8.6	-4.0	-11.0	1.1	sn	6	4	0.0	2.0	4.5	7.2
10.	-5.6	-2.8	-13.6	0.2	sn	5	4	0.0	1.5	4.8	8.8
11.	-6.0	-3.6	-6.7	0.6	sn	7	4	0.0	2.4	7.8	12.9
12.	-5.2	-2.6	-9.7	0.0	sn	7	4	0.0	2.4	5.4	9.6
13.	-5.0	-1.0	-7.2	0.0	sn	7	4	0.0	1.5	5.5	18.1
14.	-6.1	-4.2	-9.4			7	4	0.0	1.4	4.1	7.3
15.	-4.8	-1.0	-6.2	8.5	sn	17	4	0.0	3.1	7.1	12.1
16.	-13.1	-2.8	-17.0	0.2	sn	20	4	0.9	2.2	4.3	6.8
17.	-6.7	-4.5	-16.2	0.1	sn	20	4	0.0	0.9	3.3	6.8
18.	-4.5	-2.2	-8.0	7.8	sn	25	4	0.0	1.9	6.5	9.8
19.	-9.7	-1.5	-13.0	3.2	sn	30	4	0.0	1.5	4.8	7.9
20.	-3.0	0.2	-10.8	0.6	sn	31	4	0.0	2.0	4.9	9.7
21.	-3.1	0.2	-3.4	7.5	sn	35	4	0.0	0.9	4.0	6.3
22.	-1.9	2.1	-7.6	0.0	sn	35	4	0.0	2.2	8.3	13.8
23.	6.1	8.3	1.8			22	4	0.0	5.3	13.1	23.2
24.	6.1	11.5	3.2			14	4	0.7	4.8	9.5	17.4
25.	5.0	9.5	3.7			0	0	0.0	9.3	18.7	32.4
26.	0.1	4.5	-0.4			4	2	0.0	1.4	8.9	12.1
27.	6.0	10.0	-0.2	0.0	sl			0.0	2.5	6.1	10.4
28.	4.0	7.2	0.4	1.5	ri		2	0.0	2.5	7.2	10.0
29.	9.3	11.0	1.3	0.0	ri			0.1	5.5	9.9	18.6
30.	4.2	9.6	3.2	0.2	ri			0.0	3.2	7.1	13.4
31.	5.0	8.4	2.7	0.0	sl			0.0	3.0	5.7	12.5



Meðalhiti	=	-1.5 °C
Frávik frá meðaltali 1961-90	=	0.7 °C
Meðalhámarkshiti	=	2.1 °C
Meðallágmarkshiti	=	-4.7 °C
Úrkomumagn	=	43.1 mm
Hlutfall úrkomu af meðaltali 1961-90	=	78.4 %
Meðalvindhraði	=	2.6 m/s
Sólskinsstundir	=	1.7 klst

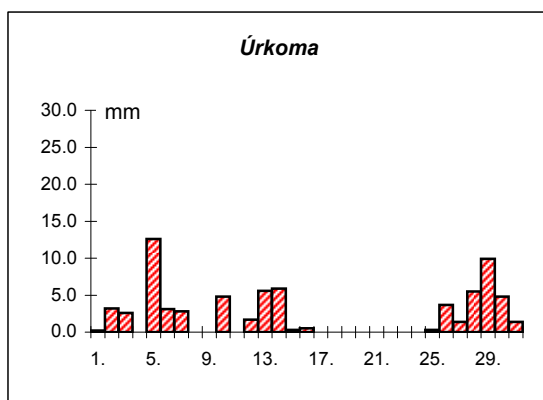
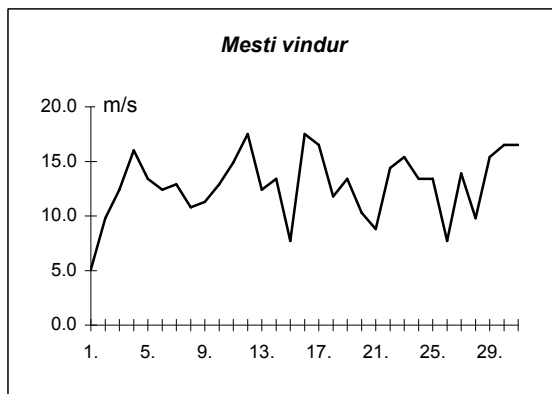
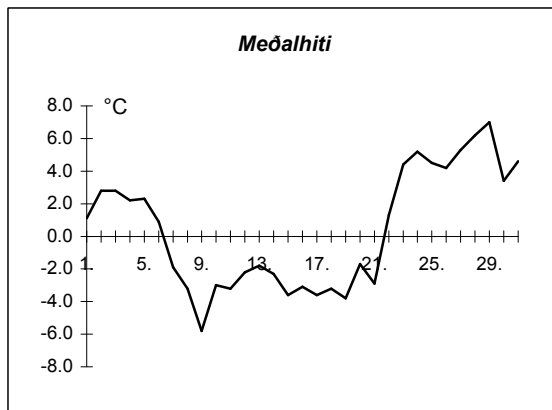
Dags	Meðalhiti (°C)	Hámark (°C)	Lágmark (°C)	Úrkoma (mm)	Úrkomutegund	Snjóþýpt (cm)	Snjóhula (0-4)	Sólskin(Klst)	Meðalvindur (m/s)	Mesti vindur (m/s)
1.	1.8	2.8	0.3						2.5	4.5
2.	0.2	2.8	-1.6						0.9	2.5
3.	2.9	3.9	-0.8	21.6	sl				5.6	9.0
4.	1.8	4.7	-1.3	1.2	sl				1.4	4.5
5.	3.5	6.6	1.9	25.1	ri				1.1	4.5
6.	1.6	4.9	-0.8	5.3	ri				2.1	4.5
7.	-2.1	3.6	-3.3	3.6	sn	7	4		7.9	12.0
8.	-2.5	-0.9	-3.2			3	4		9.6	12.0
9.	-6.1	-2.6	-6.4			2	2		6.8	9.0
10.	-3.8	-1.8	-9.6	1.5	sn	7	4		2.6	6.5
11.	-3.7	1.9	-4.8	6.3	sn	7	4		6.9	12.0
12.	-3.7	-1.8	-8.4	0.0	sn		2		1.4	2.5
13.	-3.8	-0.7	-6.0	0.1	sn	4	4		1.8	6.6
14.	-3.7	-2.0	-6.3	5.0	sn	8	4		2.8	6.5
15.	-3.0	-0.4	-4.3			7	2		5.4	9.5
16.	-7.1	-3.0	-8.6			6	2		2.8	9.0
17.	-3.8	-2.5	-8.7				2		7.4	12.0
18.	-1.7	1.2	-5.4	0.6	sn	4	2		10.7	19.0
19.	-5.2	-1.6	-6.0			4	2		5.2	6.5
20.	-2.1	-0.8	-5.6			4	2		4.5	6.5
21.	-2.4	0.9	-2.6				2		1.2	4.5
22.	-3.1	-1.4	-6.4			3	2		2.0	6.5
23.	3.4	8.1	-3.8			3	2		2.6	9.0
24.	2.6	10.5	0.4				2		0.8	4.5
25.	6.0	10.3	-0.5				2		2.9	9.0
26.	1.1	5.2	0.2				2		2.4	6.5
27.	0.6	3.9	-1.5				2		1.3	6.5
28.	1.6	3.7	0.7	1.0	ri		2		0.2	1.0
29.	5.2	6.6	0.9	0.4	ri		2		4.1	9.0
30.	3.2	6.7	3.4	1.6	ri		2		3.6	9.5
31.	2.0	4.3	-0.5		ri		2		0.7	2.5



Meðalhiti	=	-0.7 °C
Meðalhámarkshiti	=	2.4 °C
Meðallágmarkshiti	=	-3.2 °C
Úrkomumagn	=	73.3 mm
Meðalvindhraði	=	3.6 m/s

Útgefandi : **Veðurstofa Íslands**
 Heimilisfang : **Bústaðavegur 9**
150 Reykjavík

Dags	Meðalhiti (°C)	Hámark (°C)	Lágmark (°C)	Úrkoma (mm)	Úrkomutegund	Snjódýpt (cm)	Snjóhula (0-4)	Sóliskín(klst)	Meðalvindur (m/s)	Mesti vindur (m/s)	Hvíða (m/s)
1.	1.1	2.4	-0.4	0.2	ri				3.3	5.1	7.2
2.	2.8	3.8	0.8	3.2	sl				4.4	9.8	12.9
3.	2.8	4.6	2.2	2.6	ri				8.2	12.4	15.4
4.	2.2	4.8	-0.3		ri				5.3	16.0	22.7
5.	2.3	7.5	1.4	12.6	sl				4.8	13.4	17.5
6.	0.9	4.0	-0.2	3.1	sl		2		4.6	12.4	16.5
7.	-1.9	1.7	-2.9	2.8	sn	1	2		6.7	12.9	16.5
8.	-3.2	-0.1	-4.7			1	2		8.4	10.8	15.4
9.	-5.8	-1.8	-8.2			1	2		5.1	11.3	14.9
10.	-3.0	-1.8	-8.2	4.8	sn	8	4		6.5	12.9	17.5
11.	-3.2	0.5	-4.7			6	2		8.1	14.9	21.1
12.	-2.2	0.4	-5.0	1.7	sn	8	4		10.9	17.5	21.6
13.	-1.8	0.5	-4.3	5.6	sl	15	4		7.3	12.4	17.0
14.	-2.3	0.7	-4.1	5.9	sn	21	4		6.9	13.4	16.0
15.	-3.6	0.1	-5.3	0.3	sn	20	4		4.6	7.7	10.3
16.	-3.1	-0.5	-6.8	0.5	sn	20	4		9.7	17.5	21.1
17.	-3.6	1.0	-4.8			20	4		9.6	16.5	21.6
18.	-3.2	-2.5	-6.7			18	4		6.0	11.8	18.0
19.	-3.8	-0.6	-5.4			16	4		7.5	13.4	17.5
20.	-1.7	-0.8	-4.7			14	2		6.6	10.3	15.4
21.	-2.9	1.0	-4.2			13	2		3.9	8.8	11.8
22.	1.3	3.7	-4.3	0.0	sl	11	2		6.8	14.4	17.5
23.	4.4	5.0	3.2	0.0	ri	8	2		11.8	15.4	19.6
24.	5.2	6.2	3.8	0.0	ri		2		7.5	13.4	17.5
25.	4.5	6.5	3.5	0.3	ri				7.2	13.4	16.5
26.	4.2	6.0	3.1	3.7	ri				4.0	7.7	10.3
27.	5.3	7.7	2.9	1.4	ri				7.3	13.9	18.5
28.	6.2	9.0	4.0	5.5	ri				6.3	9.8	14.4
29.	7.0	9.5	7.5	9.9	ri				12.1	15.4	23.2
30.	3.4	8.6	2.3	4.8	sl				10.1	16.5	24.2
31.	4.6	7.3	2.6	1.4	ri				7.5	16.5	23.2



Meðalhiti	=	0.4 °C
Frávik frá meðaltali 1961-90	=	0.5 °C
Meðalhámarkshiti	=	3.0 °C
Meðallágmarkshiti	=	-1.5 °C
Úrkomumagn	=	70.3 mm
Hlutfall úrkomu af meðaltali 1931-60	=	71.5 %
Meðalvindhraði	=	7.1 m/s