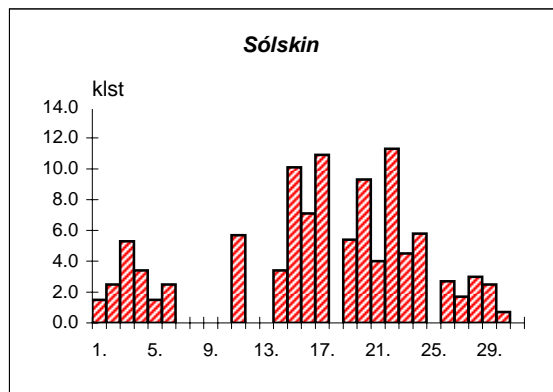
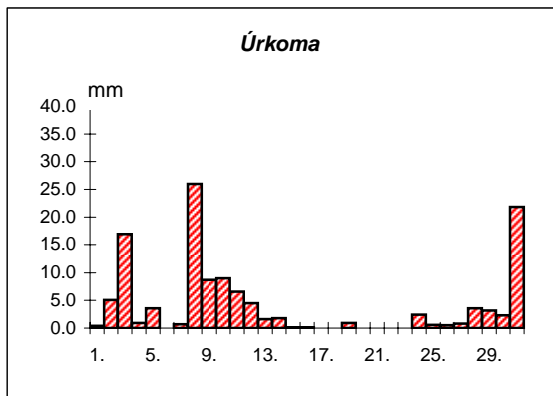
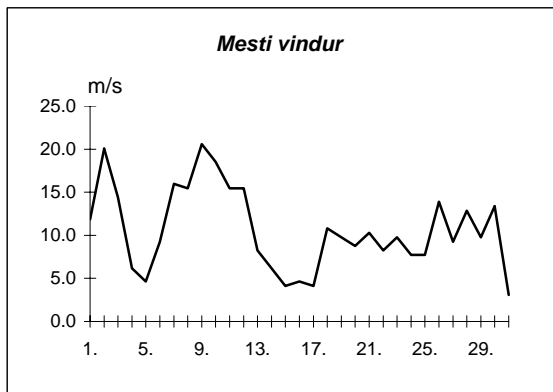
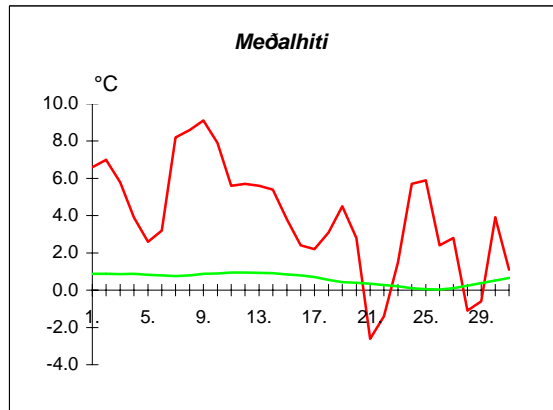
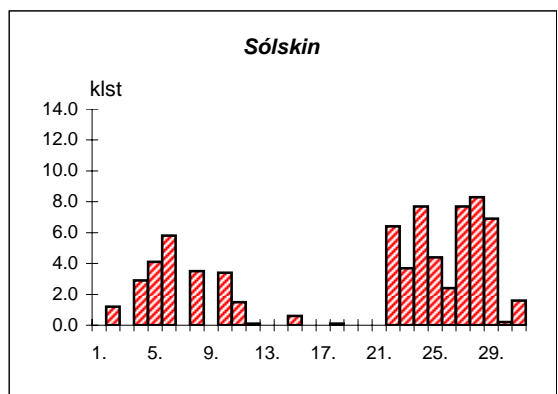
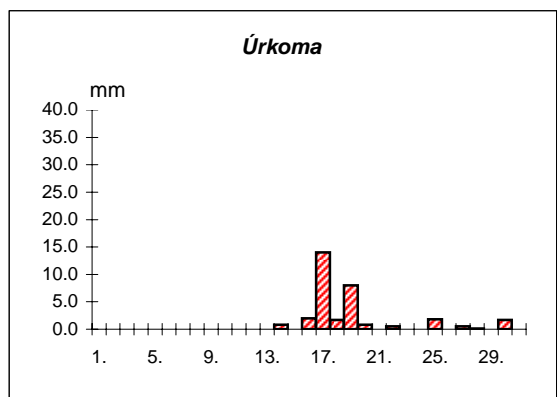
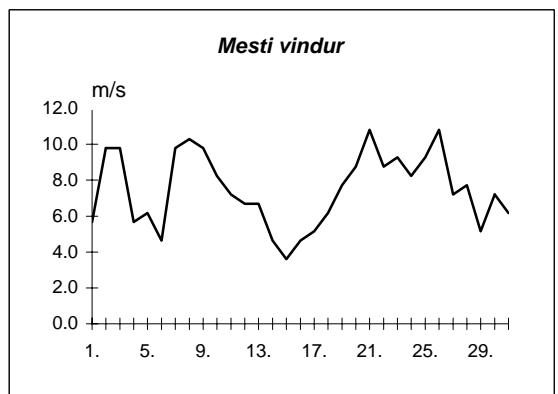
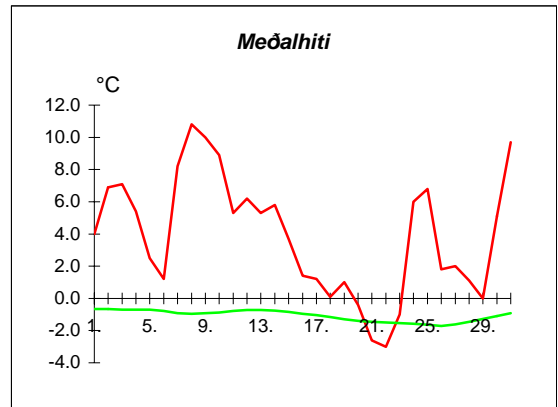


Dags	Meðalhiti (°C)	Hámark (°C)	Lágmark (°C)	Úrkoma (mm)	Úrkomutegund	Snjódýpt (cm)	Snjöhula (0-4)	Sólskin(klst)	Meðalvindur (m/s)	Mesti vindur (m/s)	Hviða (m/s)
1.	6.6	8.8	5.3	0.4	ri		0	1.5	4.8	11.8	17.5
2.	7.0	9.2	4.6	5.1	ri		0	2.5	12.1	20.1	29.9
3.	5.8	7.5	5.5	16.9	sl		0	5.3	7.3	14.4	21.6
4.	3.9	6.8	3.3	0.9	ri		0	3.4	2.9	6.2	11.3
5.	2.6	4.7	0.5	3.6	sl		0	1.5	2.2	4.6	7.2
6.	3.2	5.0	-1.0	0.0			0	2.5	4.4	9.3	12.9
7.	8.2	9.2	5.0	0.7	ri		0	0.0	12.9	16.0	24.2
8.	8.6	9.3	8.4	26.0	ri		0	0.0	11.7	15.4	21.6
9.	9.1	10.0	8.1	8.7	ri		0	0.0	14.5	20.6	27.8
10.	7.9	9.5	7.8	9.0	ri		0	0.0	14.6	18.5	28.8
11.	5.6	8.0	4.8	6.6	ri		0	5.7	9.7	15.4	23.2
12.	5.7	7.3	4.1	4.5	sl		0	0.0	8.8	15.4	23.7
13.	5.6	7.5	4.1	1.6	ri		0	0.0	5.6	8.2	13.9
14.	5.4	8.0	4.1	1.8	ri		0	3.4	2.6	6.2	9.3
15.	3.8	7.4	0.1	0.1	ri		0	10.1	1.8	4.1	6.7
16.	2.4	6.8	0.1	0.1	ri		0	7.1	2.1	4.6	7.2
17.	2.2	6.0	0.6	---			0	10.9	2.8	4.1	6.7
18.	3.1	6.6	0.5	---			0	0.0	6.1	10.8	18.5
19.	4.5	8.2	1.6	0.9	ri		0	5.4	5.5	9.8	15.4
20.	2.8	6.0	1.1	---			0	9.3	4.1	8.8	12.4
21.	-2.6	4.6	-4.3	---			0	4.0	6.8	10.3	17.0
22.	-1.4	2.5	-3.6	---			0	11.3	3.1	8.2	11.3
23.	1.5	6.0	-4.9	---			0	4.5	4.6	9.8	14.4
24.	5.7	7.0	3.6	2.4	ri		0	5.8	4.3	7.7	11.8
25.	5.9	7.5	4.7	0.6	ri		0	0.0	5.5	7.7	12.4
26.	2.4	5.6	0.6	0.5	ri		0	2.7	7.0	13.9	20.6
27.	2.8	4.9	0.7	0.8	sl		0	1.7	5.1	9.3	13.9
28.	-1.1	4.2	-2.6	3.6	sl	2	4	3.0	5.3	12.9	19.6
29.	-0.6	1.2	-4.4	3.2	sn	5	4	2.5	4.3	9.8	16.5
30.	3.9	6.2	0.1	2.3	sl		2	0.7	4.6	13.4	21.1
31.	1.1	3.0	0.0	21.8	sl	8	4	0.0	1.8	3.1	5.1



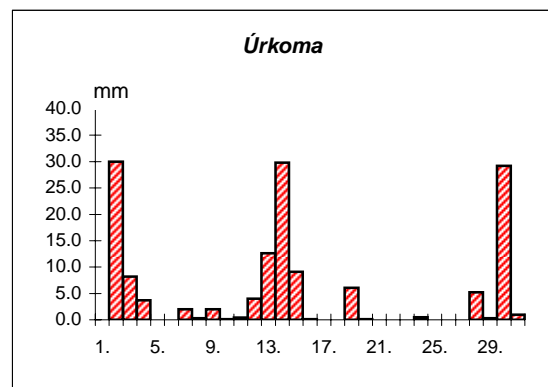
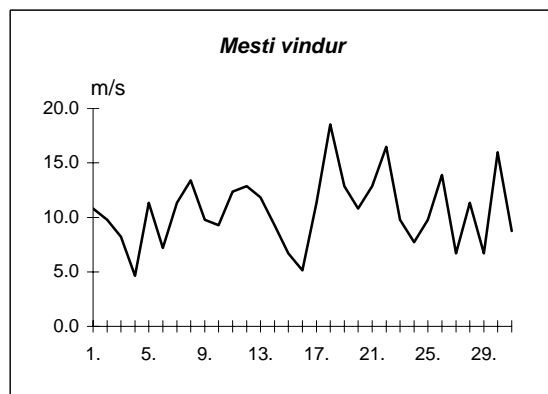
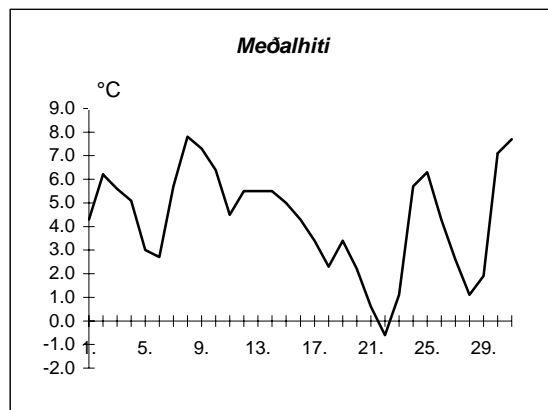
Meðalhiti	=	3.9 °C
Frávik frá meðaltali 1931-60	=	2.4 °C
Meðalhámarkshiti	=	6.6 °C
Meðallágmarkshiti	=	1.9 °C
Úrkomumagn	=	122.1 mm
Hlutfall úrkomu af meðaltali 1931-60	=	188.0 %
Meðalvindhraði	=	6.1 m/s
Sólskinsstundir	=	104.8 klst

Dags	Meðalhiti (°C)	Hámark (°C)	Lágmark (°C)	Úrkoma (mm)	Úrkomutegund	Snjódýpt (cm)	Snjöhula (0-4)	Sólskin(klst)	Meðalvindur (m/s)	Mesti vindur (m/s)	Hviða (m/s)
1.	4.0	8.7	1.0	---			2	0.0	2.8	5.7	9.8
2.	6.9	10.7	3.3	0.0			2	1.2	3.9	9.8	18.0
3.	7.1	9.3	5.8	0.0			0	0.0	5.4	9.8	19.0
4.	5.4	9.3	2.5	0.0			0	2.9	3.2	5.7	9.8
5.	2.5	6.5	1.0	---			0	4.1	2.6	6.2	10.3
6.	1.2	5.6	-4.0	---			0	5.8	1.8	4.6	7.2
7.	8.2	10.0	2.5	---			0	0.0	7.2	9.8	19.6
8.	10.8	13.3	8.9	0.0			0	3.5	6.0	10.3	19.0
9.	10.0	11.6	8.2	0.0			0	0.0	6.0	9.8	19.0
10.	8.9	11.6	7.5	---			0	3.4	4.1	8.2	15.4
11.	5.3	9.5	4.0	---			0	1.5	3.9	7.2	14.9
12.	6.2	8.6	2.9	---			0	0.1	3.6	6.7	13.9
13.	5.3	7.0	4.2	0.0			0	0.0	2.7	6.7	12.9
14.	5.8	7.8	4.2	0.8	ri		0	0.0	1.5	4.6	9.3
15.	3.7	7.5	1.0	---			0	0.6	1.4	3.6	5.7
16.	1.4	6.4	1.0	2.0	sl		0	0.0	1.4	4.6	7.2
17.	1.2	2.5	0.1	14.0	sl	2	4	0.0	2.5	5.1	8.8
18.	0.1	2.5	-0.6	1.7	sl	0	2	0.1	2.4	6.2	8.8
19.	1.0	2.6	-1.3	8.0	sl	10	4	0.0	3.3	7.7	11.3
20.	-0.4	2.0	-1.3	0.8	sl	11	4	0.0	5.2	8.8	12.9
21.	-2.6	-0.8	-3.4	0.0		10	4	0.0	5.1	10.8	17.0
22.	-3.0	-1.3	-3.8	0.5	sl	5	4	6.4	5.0	8.8	12.9
23.	-1.0	-0.1	-5.1	0.0			0	3.7	3.3	9.3	15.4
24.	6.0	8.5	-1.0	0.0		5	2	7.7	2.6	8.2	14.9
25.	6.8	12.6	2.5	1.8	ri		0	4.4	4.4	9.3	18.5
26.	1.8	8.8	0.9	0.0			0	2.4	4.7	10.8	22.1
27.	2.0	5.5	-2.0	0.5	sl		0	7.7	3.0	7.2	18.0
28.	1.1	5.0	-1.0	0.1	sl		0	8.3	3.4	7.7	14.4
29.	0.0	4.0	-3.3	0.0			0	6.9	2.1	5.1	9.8
30.	5.1	11.6	-1.6	1.7	sn	5	2	0.2	3.9	7.2	13.4
31.	9.7	13.0	8.1	0.0			0	1.6	3.6	6.2	11.8



Meðalhiti	=	3.9 °C
Frávik frá meðaltali 1931-60	=	4.2 °C
Meðalhámarkshiti	=	7.1 °C
Meðallágmarkshiti	=	1.3 °C
Úrkomumagn	=	31.9 mm
Hlutfall úrkomu af meðaltali 1931-60	=	76.0 %
Meðalvindhraði	=	3.6 m/s
Sólskinsstundir	=	72.5 klst

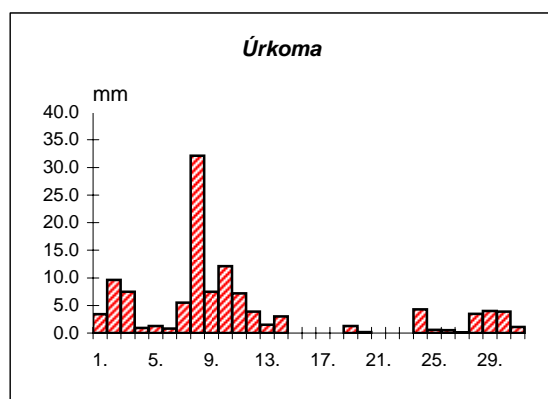
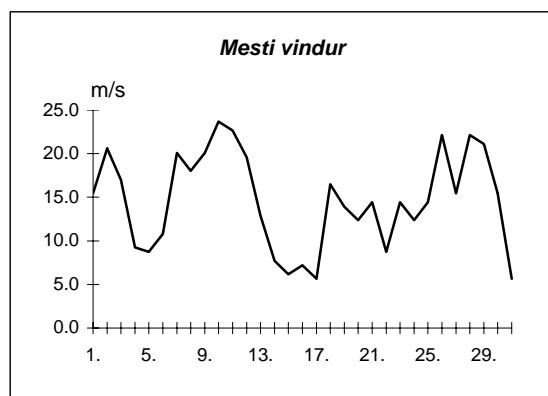
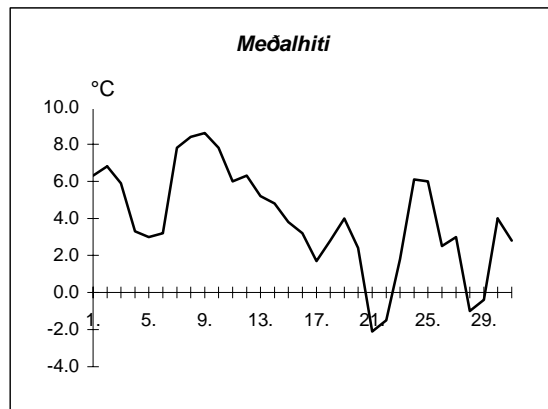
Dags	Meðalhiti (°C)	Hámark (°C)	Lágmark (°C)	Úrkoma (mm)	Úrkomutegund	Snjódýpt (cm)	Snjöhula (0-4)	Sólskin(klást)	Meðalvindur (m/s)	Mesti vindur (m/s)	Hviða (m/s)
1.	4.3	7.5	0.0	0.0			0		3.9	10.8	10.8
2.	6.2	7.2	5.2	30.0	ri		0		6.7	9.8	12.9
3.	5.6	8.0	5.2	8.2	ri		0		4.1	8.2	13.4
4.	5.1	8.5	3.3	3.7	ri		0		2.8	4.6	6.2
5.	3.0	5.5	-0.3	0.0			0		5.1	11.3	16.0
6.	2.7	6.2	-0.7	---			0		1.7	7.2	10.8
7.	5.7	8.0	0.4	2.0	ri		0		5.4	11.3	14.9
8.	7.8	9.5	6.8	0.3	ri		0		8.4	13.4	19.6
9.	7.3	8.1	6.3	2.0	ri		0		6.7	9.8	12.9
10.	6.4	8.0	5.8	0.1	ri		0		4.9	9.3	11.8
11.	4.5	7.1	3.2	0.4	ri		0		7.8	12.4	19.0
12.	5.5	6.5	4.1	4.0	sl		0		8.2	12.9	18.0
13.	5.5	7.0	2.7	12.6	ri		0		8.4	11.8	17.5
14.	5.5	7.7	4.3	29.8	ri		0		5.2	9.3	14.9
15.	5.0	5.8	3.9	9.1	ri		0		3.7	6.7	9.3
16.	4.3	8.0	2.5	0.1	ri		0		2.6	5.1	7.7
17.	3.4	8.4	-0.8	---			0		5.1	11.3	16.0
18.	2.3	5.8	0.5	0.0			0		9.1	18.5	24.7
19.	3.4	6.2	1.3	6.1	sl		0		4.8	12.9	15.4
20.	2.2	5.6	0.3	0.1	ri		0		4.9	10.8	16.0
21.	0.6	3.4	-1.2	---			0		8.2	12.9	20.6
22.	-0.6	2.8	-1.3	---			0		10.2	16.5	22.1
23.	1.1	5.1	-3.4	---			0		3.8	9.8	13.9
24.	5.7	9.7	1.4	0.5	ri		0		2.8	7.7	11.3
25.	6.3	10.3	2.0	---			0		3.0	9.8	14.4
26.	4.3	8.9	2.3	---			0		5.9	13.9	21.6
27.	2.6	7.2	-0.8	---			0		2.2	6.7	11.3
28.	1.1	5.3	-0.3	5.2	sl	2	4		4.3	11.3	16.5
29.	1.9	6.0	-3.3	0.3	sn	1	4		3.0	6.7	16.5
30.	7.1	9.0	0.7	29.2	sl		0		7.2	16.0	25.7
31.	7.7	8.6	6.8	1.0	ri		0		6.4	8.8	11.3



Meðalhiti	=	4.3 °C
Meðalhámarkshiti	=	7.1 °C
Meðallágmarkshiti	=	1.8 °C
Úrkomumagn	=	144.7 mm
Meðalvindhraði	=	5.4 m/s

Útgefandi : Veðurstofa Íslands
 Heimilisfang : Bústaðavegur 9
 150 Reykjavík

Dags	Meðalhiti (°C)	Hámark (°C)	Lágmark (°C)	Úrkoma (mm)	Úrkomutegund	Snjóþýpt (cm)	Snjóhula (0-4)	Sólskin(klíst)	Meðalvindur (m/s)	Mesti vindur (m/s)	Hviða (m/s)
1.	6.3	8.5	5.2	3.4	ri		0		7.9	15.4	20.6
2.	6.8	12.0	4.1	9.6	ri		0		14.7	20.6	29.9
3.	5.9	8.4	4.9	7.5	sl		0		8.8	17.0	22.1
4.	3.3	7.3	2.2	0.9	sl		0		4.6	9.3	13.9
5.	3.0	5.6	0.7	1.3	sl		0		4.4	8.8	11.3
6.	3.2	5.9	-0.6	0.8	sl		0		6.7	10.8	15.4
7.	7.8	9.0	5.3	5.5	ri		0		14.8	20.1	26.8
8.	8.4	9.4	5.7	32.1	ri		0		13.2	18.0	25.2
9.	8.6	9.5	7.7	7.5	ri		0		16.9	20.1	29.3
10.	7.8	12.3	5.3	12.1	ri		0		17.6	23.7	30.9
11.	6.0	9.0	3.4	7.2	ri		0		17.1	22.7	31.4
12.	6.3	9.5	4.7	3.9	ri		0		14.8	19.6	29.9
13.	5.2	7.3	4.0	1.5	ri		0		7.7	12.9	18.0
14.	4.8	8.0	3.0	3.0	ri		0		3.1	7.7	11.3
15.	3.8	7.8	0.2	---			0		3.3	6.2	6.7
16.	3.2	7.3	0.3	---			0		4.1	7.2	10.3
17.	1.7	5.6	-0.9	---			0		3.1	5.7	8.2
18.	2.8	5.5	-0.7	---			0		9.2	16.5	22.1
19.	4.0	6.3	1.7	1.3	ri		0		9.3	13.9	18.0
20.	2.4	5.9	1.8	0.2	ri		0		8.4	12.4	15.4
21.	-2.1	3.6	-3.2	---			0		9.8	14.4	18.0
22.	-1.5	1.3	-3.1	0.0			4		6.5	8.8	12.4
23.	1.8	5.5	-4.7	---			0		6.7	14.4	17.0
24.	6.1	7.6	4.4	4.3	ri		0		8.7	12.4	15.4
25.	6.0	8.0	5.1	0.6	ri		0		9.8	14.4	18.5
26.	2.5	6.6	-1.4	0.5	ri		0		12.7	22.1	28.3
27.	3.0	6.7	-1.0	0.1	sl		0		8.4	15.4	19.6
28.	-1.0	5.0	-3.3	3.5	sl	1	2		7.5	22.1	27.3
29.	-0.4	1.7	-3.1	4.0	sl	6	4		6.7	21.1	24.7
30.	4.0	6.0	-0.8	3.9	sl		2		7.8	15.4	19.6
31.	2.8	6.2	0.6	1.1	sl		2		3.5	5.7	8.8



Meðalhiti	=	4.0 °C
Frávik frá meðaltali 1931-60	=	2.4 °C
Meðalhámarkshiti	=	7.0 °C
Meðallágmarkshiti	=	1.5 °C
Úrkomumagn	=	115.8 mm
Hlutfall úrkomu af meðaltali 1931-60	=	135.0 %
Meðalvindhraði	=	9.0 m/s