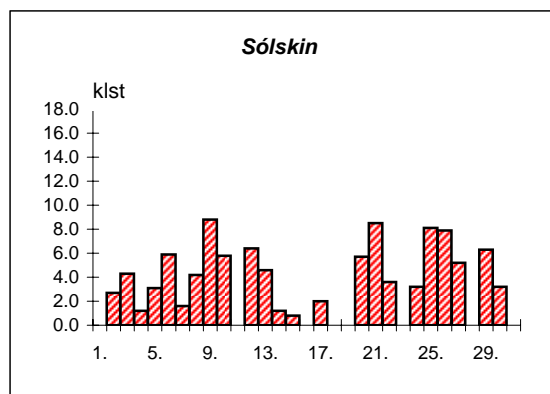
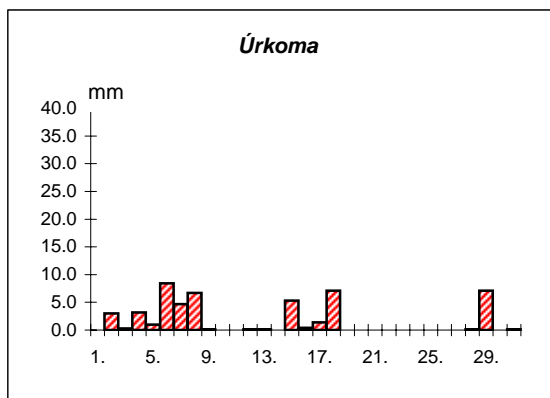
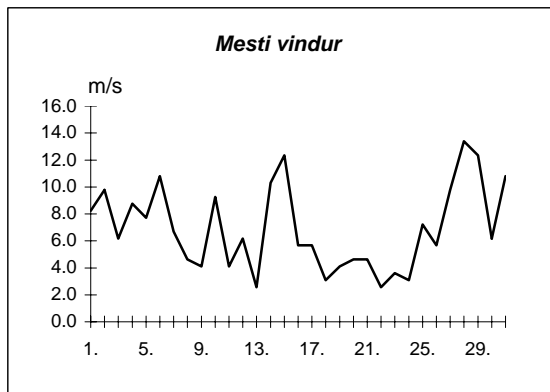
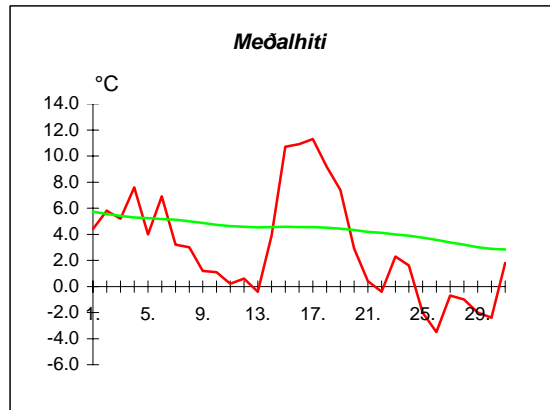
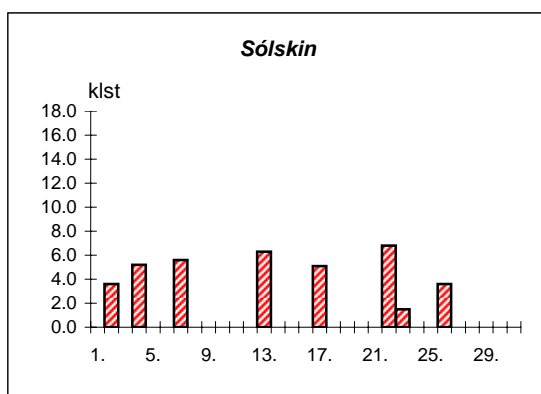
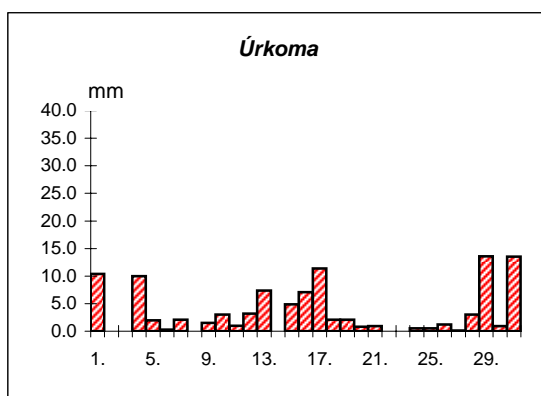
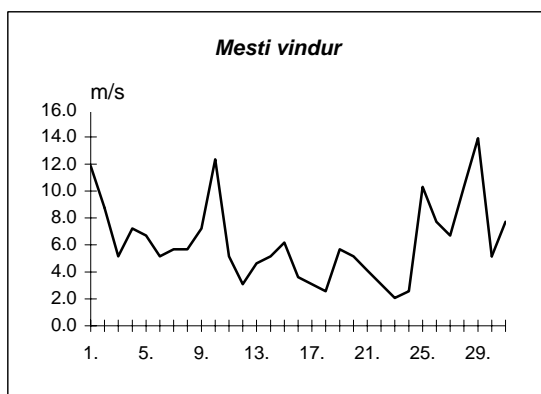
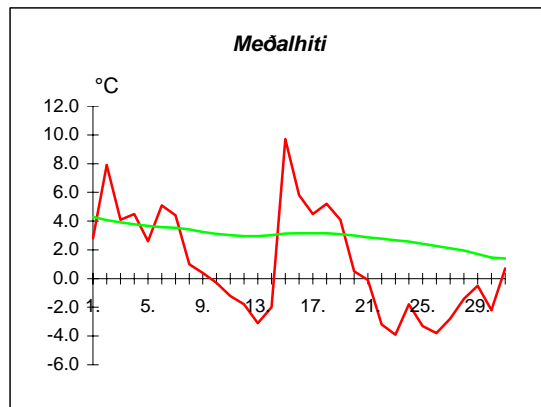


Dags	Meðalhiti (°C)	Hámark (°C)	Lágmark (°C)	Úrkoma (mm)	Úrkomutegund	Snjódýpt (cm)	Snjöhula (0-4)	Sólskin(klst)	Meðalvindur (m/s)	Mesti vindur (m/s)	Hviða (m/s)
1.	4.4	6.2	1.1	---			0	0.0	4.2	8.2	14.4
2.	5.8	8.1	4.9	3.0	ri		0	2.7	4.9	9.8	17.0
3.	5.2	7.5	2.6	0.3	ri		0	4.3	3.9	6.2	10.8
4.	7.6	10.2	5.4	3.2	ri		0	1.2	5.9	8.8	14.4
5.	4.0	6.8	2.0	1.0	ri		0	3.1	3.1	7.7	13.4
6.	6.9	10.3	3.2	8.4	ri		0	5.9	4.8	10.8	16.0
7.	3.2	6.6	2.1	4.7	ri		0	1.6	3.9	6.7	11.3
8.	3.0	6.4	2.0	6.7	sl		0	4.2	2.1	4.6	9.3
9.	1.2	5.3	-1.0	0.1	ri		0	8.8	2.0	4.1	7.2
10.	1.1	2.9	-1.2	---			0	5.8	5.1	9.3	14.9
11.	0.2	2.2	-1.6	---			0	0.0	2.3	4.1	6.7
12.	0.6	3.4	-2.2	0.1	sn		0	6.4	2.0	6.2	9.8
13.	-0.4	2.8	-2.5	0.1	sn		2	4.6	1.7	2.6	4.1
14.	3.9	8.3	-2.9	0.0			0	1.2	5.5	10.3	18.0
15.	10.7	12.1	7.6	5.3	sl		0	0.8	6.3	12.4	19.0
16.	10.9	12.5	7.9	0.4	ri		0	0.0	3.6	5.7	10.8
17.	11.3	13.5	10.2	1.4	ri		0	2.0	2.3	5.7	9.3
18.	9.2	12.0	8.4	7.1	ri		0	0.0	1.8	3.1	5.1
19.	7.4	9.5	5.6	0.0			0	0.0	1.5	4.1	5.7
20.	2.9	8.9	0.0	---			0	5.7	2.1	4.6	7.7
21.	0.4	4.2	-1.9	---			0	8.5	2.5	4.6	8.2
22.	-0.4	2.8	-4.4	---			0	3.6	1.4	2.6	4.1
23.	2.3	4.3	1.2	---			0	0.0	2.0	3.6	5.1
24.	1.6	5.2	0.0	---			0	3.2	1.8	3.1	5.1
25.	-2.0	2.6	-4.5	---			0	8.1	3.1	7.2	11.8
26.	-3.5	0.2	-5.4	---			0	7.9	2.5	5.7	9.3
27.	-0.7	2.0	-5.7	---			0	5.2	6.2	9.8	16.0
28.	-1.0	0.0	-2.6	0.1	sn	1	4	0.0	10.2	13.4	23.2
29.	-2.0	0.4	-2.7	7.1	sn	6	4	6.3	4.3	12.4	20.6
30.	-2.4	-0.6	-5.7	0.0		6	4	3.2	1.9	6.2	9.8
31.	1.8	2.7	-1.6	0.1	sn	6	4	0.0	6.2	10.8	20.6

Meðalhiti	=	3.0 °C
Frávik frá meðaltali 1931-60	=	-1.9 °C
Meðalhámarkshiti	=	5.8 °C
Meðallágmarkshiti	=	0.6 °C
Úrkomumagn	=	49.1 mm
Hlutfall úrkomu af meðaltali 1931-60	=	51.0 %
Meðalvindhraði	=	3.6 m/s
Sólskinsstundir	=	104.3 klst

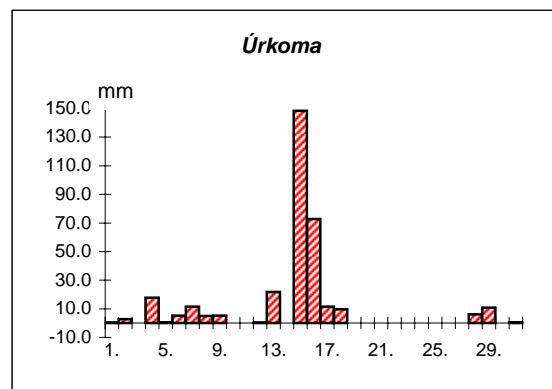
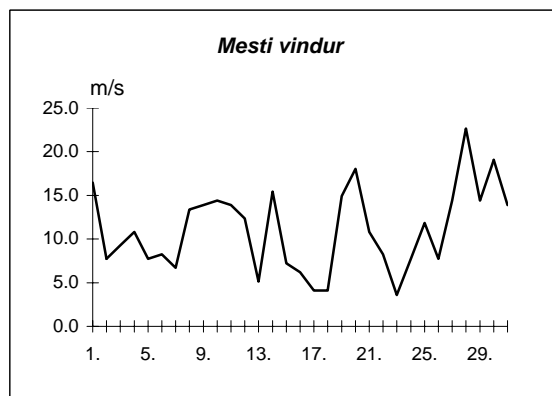
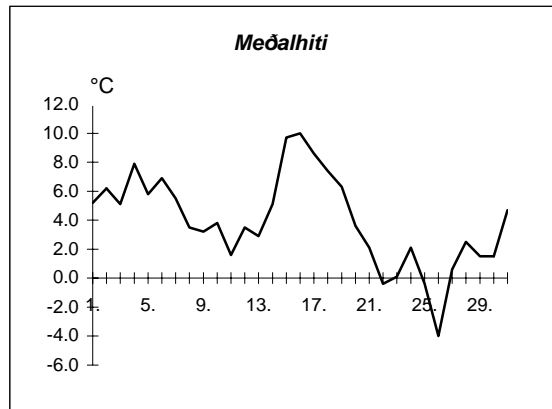


Dags	Meðalhiti (°C)	Hámark (°C)	Lágmark (°C)	Úrkoma (mm)	Úrkomutegund	Snjódýpt (cm)	Snjöhula (0-4)	Sólskin(klst)	Meðalvindur (m/s)	Mesti vindur (m/s)	Hviða (m/s)
1.	2.8	4.4	0.5	10.4	ri		0	0.0	3.1	11.8	17.0
2.	7.9	10.7	3.0	0.0			0	3.6	2.6	8.8	16.0
3.	4.1	8.2	2.6	---			0	0.0	1.9	5.1	9.8
4.	4.5	12.2	0.2	10.0	sl	5	4	5.2	3.1	7.2	14.4
5.	2.6	12.1	2.6	2.0	ri		0	0.0	2.9	6.7	9.8
6.	5.1	8.1	1.1	0.3	ri		0	0.0	1.8	5.1	9.3
7.	4.4	8.5	4.1	2.1	ri		0	5.6	2.5	5.7	10.3
8.	1.0	5.5	-1.6	---			0	0.0	2.8	5.7	9.3
9.	0.4	3.0	-0.6	1.5	sl	2	4	0.0	3.3	7.2	11.3
10.	-0.3	2.0	-0.8	3.0	sl	2	4	0.0	7.4	12.4	18.5
11.	-1.2	0.0	-1.6	1.0	sl	2	2	0.0	1.7	5.1	8.8
12.	-1.8	-0.3	-3.0	3.2	sn	6	4	0.0	1.0	3.1	4.6
13.	-3.1	0.9	-3.8	7.4	sn	10	4	6.3	2.1	4.6	7.2
14.	-2.0	2.0	-7.8	---		10	4	0.0	1.4	5.1	8.2
15.	9.7	13.0	1.4	4.9	sl		2	0.0	2.5	6.2	10.8
16.	5.8	12.6	5.0	7.1	ri		0	0.0	0.7	3.6	6.2
17.	4.5	8.5	3.4	11.4	ri		0	5.1	0.8	3.1	3.6
18.	5.2	6.5	3.2	2.1	ri		0	0.0	0.9	2.6	3.6
19.	4.1	6.0	3.8	2.1	ri		0	0.0	2.8	5.7	12.4
20.	0.5	3.8	-0.8	0.8	sl		0	0.0	2.3	5.1	8.8
21.	-0.1	1.7	-0.8	0.9	sl		2	0.0	1.1	4.1	7.7
22.	-3.2	-0.1	-4.5	---			0	6.8	1.3	3.1	5.1
23.	-3.9	-1.0	-7.1	---			0	1.5	0.7	2.1	3.6
24.	-1.8	-1.1	-3.4	0.5	sn		2	0.0	1.1	2.6	3.6
25.	-3.3	0.4	-4.1	0.5	sn		0	0.0	3.6	10.3	15.4
26.	-3.8	-1.2	-8.2	1.2	sn		2	3.6	3.5	7.7	14.4
27.	-2.8	0.0	-6.2	0.1	sn		2	0.0	1.7	6.7	10.3
28.	-1.4	-0.2	-4.7	3.0	sn	3	2	0.0	5.3	10.3	15.4
29.	-0.5	2.0	-1.2	13.6	sl	3	2	0.0	5.1	13.9	19.6
30.	-2.2	-0.9	-5.6	0.9	sl	3	2	0.0	3.3	5.1	8.2
31.	0.7	1.9	-1.4	13.5	sl	20	4	0.0	5.3	7.7	12.4



Meðalhiti	=	1.0 °C
Frávik frá meðaltali 1931-60	=	-2.6 °C
Meðalhámarkshiti	=	4.2 °C
Meðallágmarkshiti	=	-1.2 °C
Úrkomumagn	=	103.5 mm
Hlutfall úrkomu af meðaltali 1931-60	=	182.0 %
Meðalvindhraði	=	2.6 m/s
Sólskinsstundir	=	37.7 klst

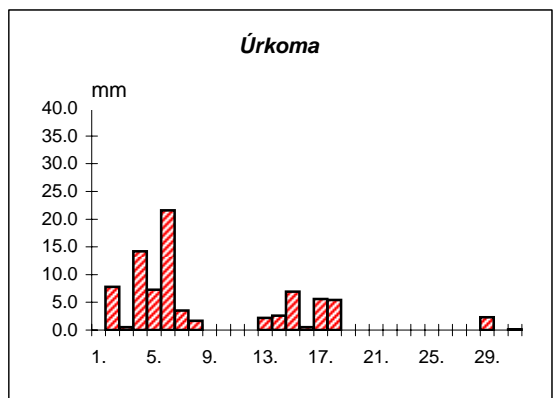
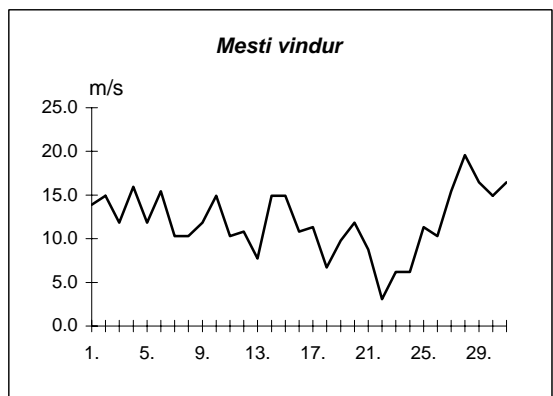
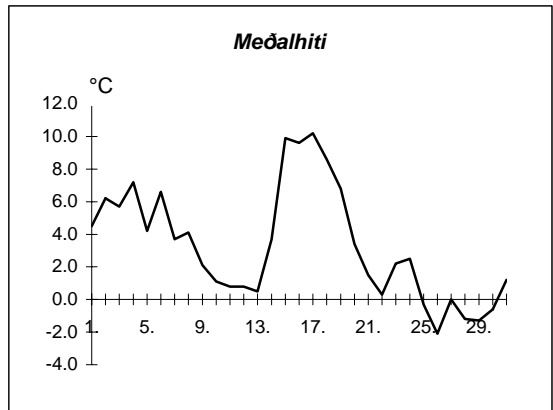
Dags	Meðalhiti (°C)	Hámark (°C)	Lágmark (°C)	Úrkoma (mm)	Úrkomutegund	Snjódýpt (cm)	Snjóhula (0-4)	Sólskin(klst)	Meðalvindur (m/s)	Mesti vindur (m/s)	Hviða (m/s)
1.	5.2	9.3	3.3	0.2	ri		0		5.3	16.5	25.2
2.	6.2	10.0	3.1	2.8	ri		0		3.1	7.7	12.4
3.	5.1	8.1	1.3	---			0		3.7	9.3	12.4
4.	7.9	10.3	5.1	17.8	ri		0		6.1	10.8	19.0
5.	5.8	8.9	3.2	0.6	ri		0		4.3	7.7	10.8
6.	6.9	8.5	2.8	5.3	ri		0		4.5	8.2	13.4
7.	5.5	8.4	3.6	11.4	ri		0		2.8	6.7	13.4
8.	3.5	5.8	0.2	5.0	ri		0		5.3	13.4	17.0
9.	3.2	5.3	1.7	5.3	ri		0		8.1	13.9	19.6
10.	3.8	5.3	2.3	0.0			0		9.7	14.4	22.1
11.	1.6	5.0	-0.2	---			0		7.2	13.9	19.0
12.	3.5	6.5	-0.1	0.3	sl		0		5.2	12.4	17.0
13.	2.9	8.0	2.0	21.7	ri		0		1.4	5.1	6.7
14.	5.1	10.7	-2.3	---			0		5.6	15.4	24.7
15.	9.7	11.0	8.9	148.5	ri		0		3.4	7.2	9.8
16.	10.0	10.7	9.0	72.7	sl		0		2.6	6.2	8.2
17.	8.6	10.3	7.9	11.4	ri		0		1.4	4.1	5.7
18.	7.4	9.5	7.4	9.7	ri		0		1.5	4.1	4.6
19.	6.3	9.3	3.9	0.1	ri		0		6.7	14.9	20.6
20.	3.6	8.5	1.3	---			0		9.7	18.0	23.7
21.	2.1	5.6	1.1	---			0		5.6	10.8	18.0
22.	-0.4	2.4	-2.0	---			0		4.5	8.2	10.8
23.	0.1	2.6	-3.2	---			0		1.8	3.6	6.2
24.	2.1	4.1	0.6	---			0		4.7	7.7	9.8
25.	-0.4	2.6	-2.3	---			0		5.7	11.8	18.0
26.	-4.0	-0.8	-6.9	---			0		3.6	7.7	12.9
27.	0.6	3.3	-6.9	0.0			0		6.6	14.4	20.6
28.	2.5	4.7	-0.1	6.1	sl	5	4		11.5	22.7	26.3
29.	1.5	5.0	-0.5	10.9	sl		0		6.9	14.4	20.6
30.	1.5	3.1	-2.1	---			0		9.7	19.0	24.7
31.	4.7	6.5	2.2	0.5	sl		0		8.0	13.9	19.6



Meðalhiti	=	3.9 °C
Meðalhámarkshiti	=	6.7 °C
Meðallágmarkshiti	=	1.4 °C
Úrkomumagn	=	330.3 mm
Meðalvindhraði	=	5.4 m/s

Útgefandi : **Veðurstofa Íslands**
 Heimilisfang : **Bústaðavegur 9**
150 Reykjavík

Dags	Meðalhiti (°C)	Hámark (°C)	Lágmark (°C)	Úrkoma (mm)	Úrkomutegund	Snjódýpt (cm)	Snjóhula (0-4)	Sólskin(klíst)	Meðalvindur (m/s)	Mesti vindur (m/s)	Hviða (m/s)
1.	4.5	10.7	0.9	0.0			0		7.9	13.9	19.0
2.	6.2	8.6	5.5	7.8	ri		0		9.0	14.9	20.1
3.	5.7	8.4	2.6	0.5	sl		0		5.1	11.8	16.0
4.	7.2	9.5	5.1	14.2	ri		0		7.6	16.0	21.6
5.	4.2	6.4	1.9	7.3	ri		0		4.6	11.8	16.0
6.	6.6	9.1	4.4	21.6	ri		0		7.4	15.4	23.2
7.	3.7	7.3	2.1	3.5	sl		0		5.6	10.3	14.9
8.	4.1	5.4	2.6	1.7	ri		0		6.8	10.3	13.9
9.	2.1	4.7	1.5	---			0		8.2	11.8	14.4
10.	1.1	2.9	0.3	---			0		10.8	14.9	19.0
11.	0.8	1.6	0.0	0.0			0		8.7	10.3	13.9
12.	0.8	2.9	-0.6	0.0			0		7.6	10.8	14.4
13.	0.5	2.0	0.0	2.2	sn	1	4		3.0	7.7	10.3
14.	3.7	8.5	-2.0	2.6	sn	1	4		7.5	14.9	20.1
15.	9.9	11.1	7.9	6.9	sl		0		10.8	14.9	20.6
16.	9.6	11.3	6.6	0.5	ri		0		5.4	10.8	14.9
17.	10.2	13.1	9.6	5.6	ri		0		4.9	11.3	14.9
18.	8.6	12.6	8.4	5.4	ri		0		4.1	6.7	8.2
19.	6.8	9.1	5.8	0.0			0		4.1	9.8	12.9
20.	3.4	7.7	1.8	---			0		8.3	11.8	16.0
21.	1.5	8.3	0.9	---			0		3.7	8.8	10.3
22.	0.3	5.5	-2.9	---			0		1.8	3.1	4.1
23.	2.2	4.1	1.5	---			0		3.4	6.2	7.7
24.	2.5	4.6	0.3	---			0		3.0	6.2	7.7
25.	-0.3	2.5	-1.2	---			0		7.9	11.3	17.5
26.	-2.1	1.0	-3.9	---			0		6.0	10.3	12.9
27.	0.0	1.3	-2.4	0.0			0		12.3	15.4	21.1
28.	-1.2	1.3	-2.9	0.0			2		16.3	19.6	25.7
29.	-1.3	0.5	-3.2	2.3	sn	25	4		6.0	16.5	21.6
30.	-0.6	0.0	-3.2	0.0		25	4		11.5	14.9	20.1
31.	1.2	2.1	-1.1	0.1	sn	20	4		12.7	16.5	20.6



Meðalhiti	=	3.3 °C
Frávik frá meðaltali 1931-60	=	-1.7 °C
Meðalhámarkshiti	=	5.9 °C
Meðallágmarkshiti	=	1.5 °C
Úrkomumagn	=	82.2 mm
Hlutfall úrkomu af meðaltali 1931-60	=	65.0 %
Meðalvindhraði	=	7.2 m/s