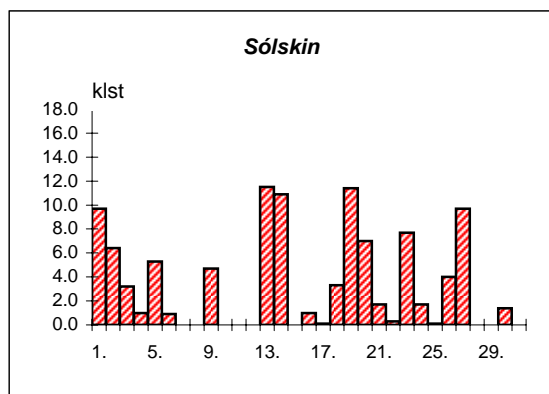
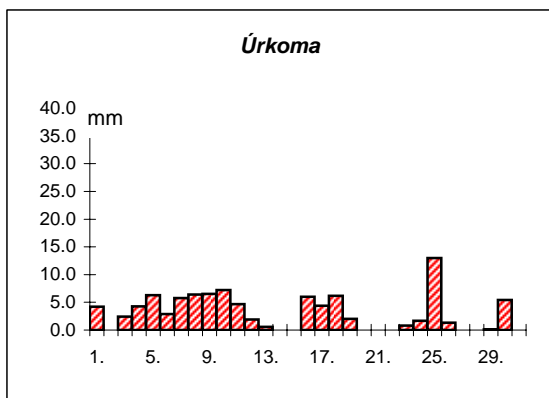
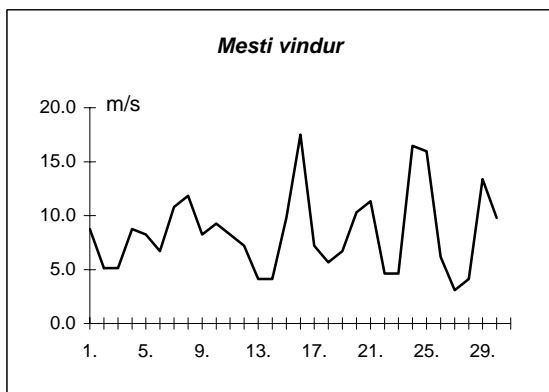
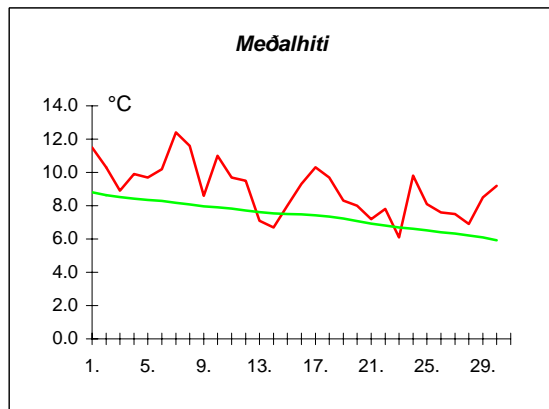
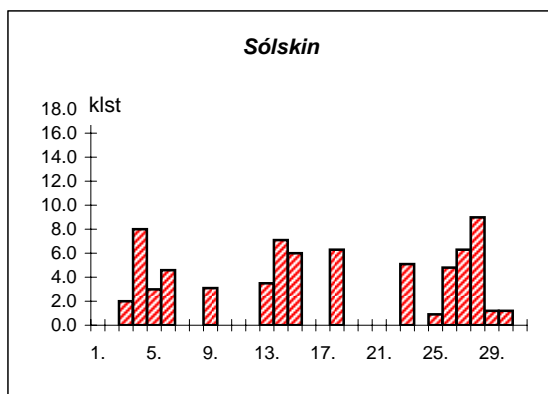
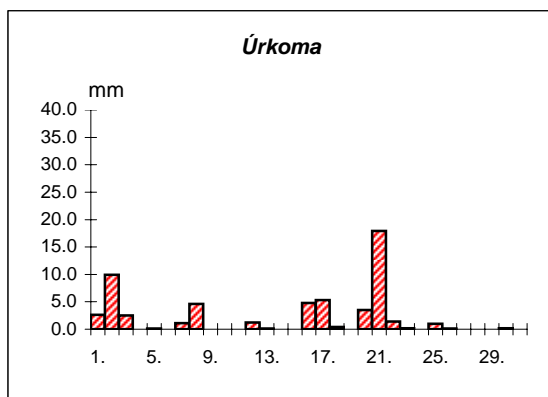
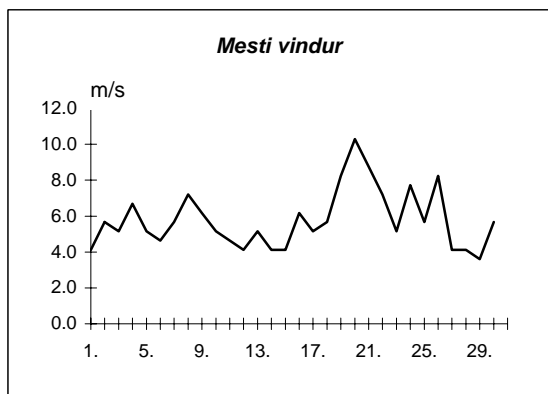
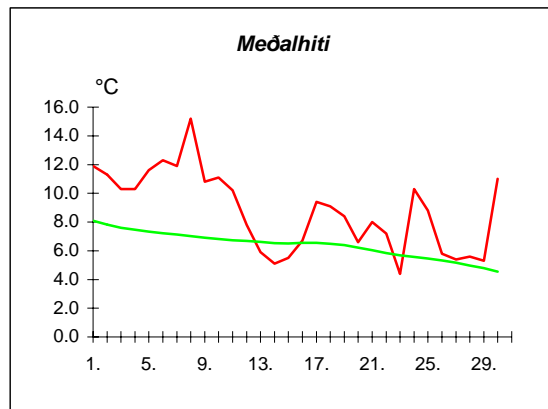


Dags	Meðalhiti (°C)	Hámark (°C)	Lágmark (°C)	Úrkoma (mm)	Úrkomutegund	Snjódýpt (cm)	Snjöhula (0-4)	Sólskin(klst)	Meðalvindur (m/s)	Mesti vindur (m/s)	Hviða (m/s)
1.	11.5	14.2	9.9	4.2	ri		0	9.7	5.9	8.8	12.9
2.	10.3	14.3	6.8	0.0			0	6.4	2.9	5.1	7.2
3.	8.9	11.3	7.0	2.4	ri		0	3.2	2.8	5.1	8.8
4.	9.9	12.0	7.7	4.3	ri		0	1.0	2.6	8.8	11.8
5.	9.7	12.3	8.1	6.3	ri		0	5.3	4.1	8.2	11.3
6.	10.2	12.5	7.4	2.9	ri		0	0.9	3.1	6.7	9.3
7.	12.4	13.0	10.6	5.8	ri		0	0.0	5.3	10.8	17.5
8.	11.6	14.1	10.0	6.4	ri		0	0.0	7.5	11.8	17.0
9.	8.6	11.2	6.8	6.5	ri		0	4.7	3.8	8.2	11.3
10.	11.0	12.3	8.0	7.2	ri		0	0.0	5.7	9.3	14.4
11.	9.7	11.5	8.3	4.7	ri		0	0.0	4.8	8.2	13.4
12.	9.5	11.6	8.1	1.9	ri		0	0.0	3.9	7.2	12.4
13.	7.1	11.2	3.3	0.6	ri		0	11.5	2.0	4.1	6.2
14.	6.7	11.2	1.0	---			0	10.9	2.1	4.1	5.7
15.	8.0	10.3	5.7	0.0			0	0.0	5.9	9.8	17.5
16.	9.3	12.0	7.8	6.0	ri		0	1.0	8.7	17.5	27.8
17.	10.3	12.6	7.3	4.4	ri		0	0.1	4.9	7.2	12.4
18.	9.7	11.7	8.7	6.2	ri		0	3.3	3.3	5.7	8.8
19.	8.3	12.1	4.1	2.0	ri		0	11.4	2.6	6.7	11.3
20.	8.0	11.4	7.0	---			0	7.0	5.4	10.3	16.5
21.	7.2	9.7	5.5	---			0	1.7	5.7	11.3	16.0
22.	7.8	10.5	4.8	0.0			0	0.3	2.3	4.6	8.2
23.	6.1	9.3	2.0	0.8	ri		0	7.7	2.4	4.6	7.2
24.	9.8	12.2	6.5	1.7	ri		0	1.7	10.6	16.5	25.2
25.	8.1	10.9	7.8	13.0	ri		0	0.1	7.8	16.0	26.8
26.	7.6	13.7	6.5	1.3	ri		0	4.0	2.7	6.2	10.8
27.	7.5	10.7	4.6	0.0			0	9.7	1.7	3.1	4.1
28.	6.9	9.7	3.8	---			0	0.0	2.0	4.1	5.7
29.	8.5	9.8	6.4	0.1	ri		0	0.0	6.9	13.4	21.6
30.	9.2	11.0	6.8	5.4	ri		0	1.4	5.3	9.8	14.9



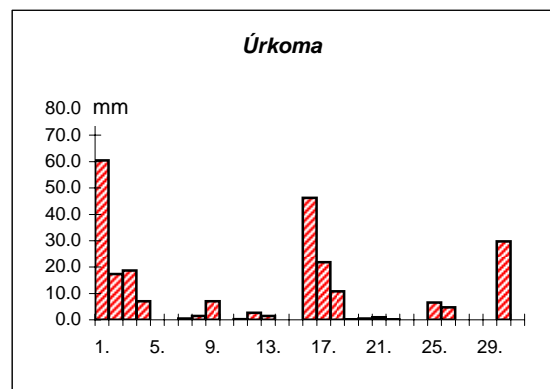
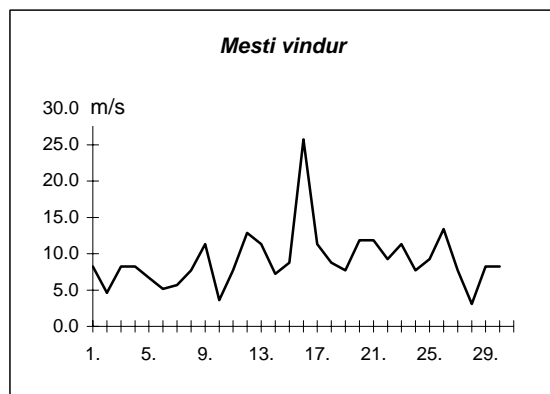
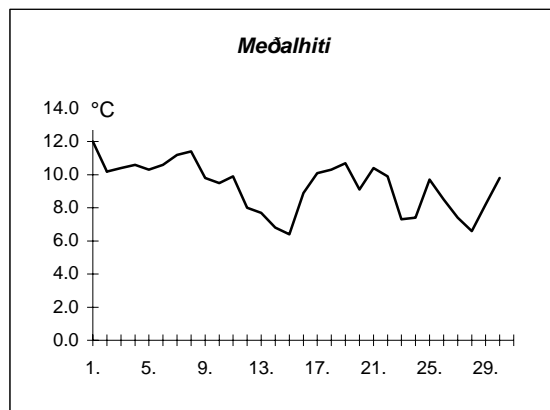
Meðalhiti	=	9.0 °C
Frávik frá meðaltali 1931-60	=	0.4 °C
Meðalhámarkshiti	=	11.7 °C
Meðallágmarkshiti	=	6.6 °C
Úrkomumagn	=	94.1 mm
Hlutfall úrkomu af meðaltali 1931-60	=	131.0 %
Meðalvindhraði	=	4.5 m/s
Sólskinsstundir	=	103.0 klst

Dags	Meðalhiti (°C)	Hámark (°C)	Lágmark (°C)	Úrkoma (mm)	Úrkomutegund	Snjódýpt (cm)	Snjöhula (0-4)	Sólskin(klst)	Meðalvindur (m/s)	Mesti vindur (m/s)	Hviða (m/s)
1.	11.9	19.1	10.6	2.6	ri		0	0.0	1.0	4.1	7.7
2.	11.3	13.1	10.2	9.9	ri		0	0.0	1.5	5.7	10.3
3.	10.3	13.0	8.0	2.5	ri		0	2.0	2.0	5.1	11.3
4.	10.3	13.2	10.2	0.0			0	8.0	3.1	6.7	10.8
5.	11.6	15.0	7.1	0.1	ri		0	3.0	2.8	5.1	10.3
6.	12.3	15.6	10.2	---			0	4.6	2.1	4.6	9.8
7.	11.9	14.9	9.0	1.1	ri		0	0.0	3.1	5.7	10.3
8.	15.2	18.2	13.5	4.6	ri		0	0.0	4.3	7.2	13.4
9.	10.8	17.4	8.5	0.0			0	3.1	2.8	6.2	11.3
10.	11.1	15.6	7.6	0.0			0	0.0	2.8	5.1	10.3
11.	10.2	15.5	7.6	---			0	0.0	1.6	4.6	9.8
12.	7.8	13.5	7.6	1.2	ri		0	0.0	2.1	4.1	8.8
13.	5.9	9.4	4.2	0.1	ri		0	3.5	2.1	5.1	7.7
14.	5.1	9.6	2.9	0.0			0	7.1	1.3	4.1	6.2
15.	5.5	10.9	-1.4	0.0			0	6.0	1.4	4.1	8.8
16.	6.7	10.7	4.3	4.8	ri		0	0.0	2.8	6.2	13.9
17.	9.4	12.6	4.0	5.3	ri		0	0.0	2.0	5.1	10.8
18.	9.1	12.4	5.0	0.4	ri		0	6.3	2.6	5.7	9.3
19.	8.4	11.1	7.7	0.0			0	0.0	4.3	8.2	12.4
20.	6.6	9.3	5.7	3.5	ri		0	0.0	5.3	10.3	16.5
21.	8.0	10.4	5.0	17.9	ri		0	0.0	5.4	8.8	13.4
22.	7.2	9.0	7.0	1.4	ri		0	0.0	4.0	7.2	10.8
23.	4.4	8.5	3.0	0.2	ri		0	5.1	1.8	5.1	7.7
24.	10.3	15.4	0.5	0.0			0	0.0	2.9	7.7	15.4
25.	8.8	14.7	7.8	1.0	ri		0	0.9	3.1	5.7	10.3
26.	5.8	8.7	4.4	0.1	ri		0	4.8	4.6	8.2	15.4
27.	5.4	10.4	4.5	---			0	6.3	1.7	4.1	7.7
28.	5.6	13.2	0.0	---			0	9.0	1.0	4.1	8.8
29.	5.3	10.0	1.4	---			0	1.2	1.4	3.6	5.7
30.	11.0	13.0	5.8	0.2	ri		0	1.2	2.5	5.7	10.3



Meðalhiti	=	8.8 °C
Frávik frá meðaltali 1931-60	=	1.0 °C
Meðalhámarkshiti	=	12.8 °C
Meðallágmarkshiti	=	6.1 °C
Úrkomumagn	=	56.9 mm
Hlutfall úrkomu af meðaltali 1931-60	=	124.0 %
Meðalvindhraði	=	2.6 m/s
Sólskinsstundir	=	72.1 klst

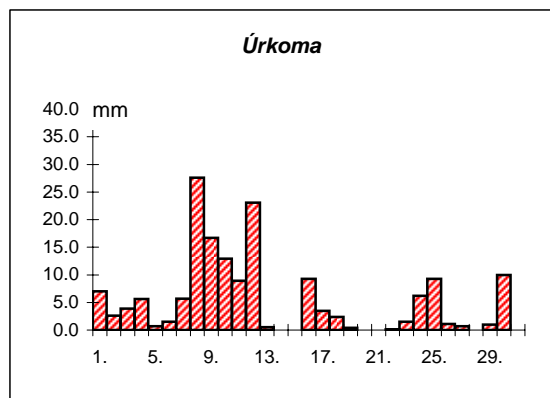
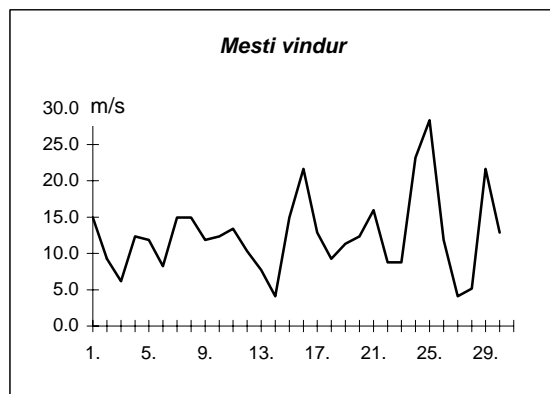
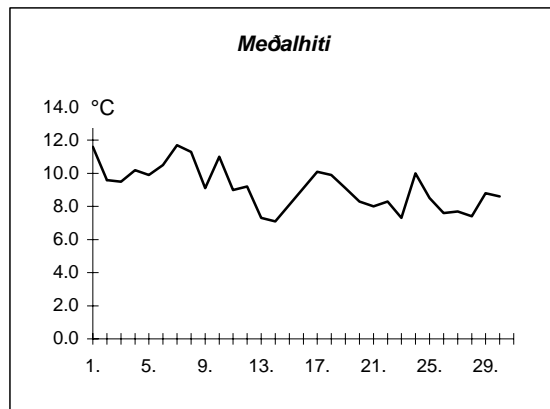
Dags	Meðalhiti (°C)	Hámark (°C)	Lágmark (°C)	Úrkoma (mm)	Úrkomutegund	Snjóþýpt (cm)	Snjóhula (0-4)	Sólskin(klst)	Meðalvindur (m/s)	Mesti vindur (m/s)	Hviða (m/s)
1.	12.0	13.5	12.1	60.4	ri		0		3.8	8.2	11.3
2.	10.2	13.1	8.7	17.4	ri		0		1.8	4.6	7.2
3.	10.4	13.2	8.5	18.7	ri		0		4.6	8.2	11.8
4.	10.6	13.5	9.5	7.1	ri		0		4.6	8.2	14.4
5.	10.3	13.8	5.7	0.0			0		3.0	6.7	12.4
6.	10.6	13.1	7.5	---			0		3.0	5.1	9.3
7.	11.2	13.0	8.5	0.5	ri		0		2.1	5.7	8.2
8.	11.4	13.1	10.2	1.5	ri		0		2.3	7.7	10.3
9.	9.8	13.6	9.3	7.0	ri		0		3.9	11.3	12.4
10.	9.5	12.7	4.8	0.0			0		1.3	3.6	4.1
11.	9.9	13.2	8.3	0.2	ri		0		4.1	7.7	11.3
12.	8.0	11.0	7.8	2.7	ri		0		6.8	12.9	21.1
13.	7.7	10.1	5.9	1.4	ri		0		5.7	11.3	18.5
14.	6.8	11.2	3.8	---			0		2.5	7.2	10.3
15.	6.4	9.7	1.3	---			0		2.8	8.8	12.4
16.	8.9	13.3	6.9	46.2	ri		0		9.3	25.7	39.6
17.	10.1	12.3	8.3	21.8	ri		0		6.5	11.3	14.9
18.	10.3	12.9	8.0	10.8	ri		0		2.9	8.8	13.9
19.	10.7	13.5	10.1	0.1	ri		0		3.6	7.7	11.3
20.	9.1	12.2	6.3	0.5	ri		0		5.4	11.8	16.5
21.	10.4	12.2	7.9	1.0	ri		0		7.9	11.8	18.5
22.	9.9	12.2	9.5	0.1	ri		0		5.7	9.3	13.9
23.	7.3	12.1	5.3	0.0			0		4.3	11.3	14.9
24.	7.4	11.5	2.4	0.0			0		3.4	7.7	11.8
25.	9.7	14.6	8.4	6.6	ri		0		5.2	9.3	14.4
26.	8.5	12.0	6.3	4.7	ri		0		6.9	13.4	19.6
27.	7.4	11.0	5.3	0.0			0		2.8	7.7	11.8
28.	6.6	11.3	2.5	---			0		1.5	3.1	4.6
29.	8.2	10.1	3.4	0.0			0		3.9	8.2	11.3
30.	9.8	11.9	8.1	29.7	ri		0		3.1	8.2	10.8



Meðalhiti	=	9.3 °C
Meðalhámarkshiti	=	12.4 °C
Meðallágmarkshiti	=	7.0 °C
Úrkomumagn	=	238.4 mm
Meðalvindhraði	=	4.2 m/s

Útgefandi : **Veðurstofa Íslands**
 Heimilisfang : **Bústaðavegur 9**
150 Reykjavík

Dags	Meðalhiti (°C)	Hámark (°C)	Lágmark (°C)	Úrkoma (mm)	Úrkomutegund	Snjódýpt (cm)	Snjöhula (0-4)	Sólskin(klíst)	Meðalvindur (m/s)	Mesti vindur (m/s)	Hviða (m/s)
1.	11.6	13.8	9.7	7.0	ri		0		9.7	14.9	20.1
2.	9.6	13.6	7.9	2.6	ri		0		4.9	9.3	11.3
3.	9.5	12.0	6.8	3.9	ri		0		3.2	6.2	10.3
4.	10.2	12.2	7.9	5.6	ri		0		4.8	12.4	16.5
5.	9.9	12.2	9.1	0.7	ri		0		7.4	11.8	15.4
6.	10.5	12.6	8.1	1.5	ri		0		5.5	8.2	12.4
7.	11.7	12.5	10.7	5.7	ri		0		8.8	14.9	20.1
8.	11.3	13.6	9.8	27.6	ri		0		9.5	14.9	19.0
9.	9.1	12.9	7.1	16.7	ri		0		6.4	11.8	14.9
10.	11.0	12.9	8.0	12.9	ri		0		9.2	12.4	18.5
11.	9.0	12.4	7.9	8.9	ri		0		6.9	13.4	17.5
12.	9.2	12.0	7.5	23.1	ri		0		4.9	10.3	13.4
13.	7.3	11.3	3.4	0.5	ri		0		4.1	7.7	10.3
14.	7.1	10.9	2.8	---			0		2.2	4.1	6.2
15.	8.1	10.5	4.1	0.0			0		9.0	14.9	20.1
16.	9.1	12.2	7.4	9.3	sl		0		12.5	21.6	27.8
17.	10.1	12.1	7.5	3.5	ri		0		9.0	12.9	17.0
18.	9.9	12.3	9.3	2.4	ri		0		6.1	9.3	12.9
19.	9.1	11.4	6.9	0.4	ri		0		8.0	11.3	14.4
20.	8.3	10.8	8.0	---			0		8.9	12.4	16.0
21.	8.0	10.0	5.0	0.0			0		9.0	16.0	19.6
22.	8.3	10.4	5.0	0.1	ri		0		5.4	8.8	12.4
23.	7.3	9.5	3.3	1.5	ri		0		4.4	8.8	11.8
24.	10.0	12.3	5.9	6.2	ri		0		15.6	23.2	33.5
25.	8.5	11.2	6.5	9.3	ri		0		12.4	28.3	32.4
26.	7.6	10.0	6.6	1.1	ri		0		4.8	11.8	14.4
27.	7.7	11.7	4.8	0.7	ri		0		2.1	4.1	6.2
28.	7.4	10.0	3.6	---			0		2.8	5.1	6.2
29.	8.8	10.1	6.7	1.0	ri		0		10.5	21.6	30.9
30.	8.6	11.5	5.6	10.0	ri		0		7.5	12.9	18.5



Meðalhiti	=	9.1 °C
Frávik frá meðaltali 1931-60	=	0.7 °C
Meðalhámarkshiti	=	11.7 °C
Meðallágmarkshiti	=	6.8 °C
Úrkomumagn	=	162.2 mm
Hlutfall úrkomu af meðaltali 1931-60	=	141.0 %
Meðalvindhraði	=	7.2 m/s