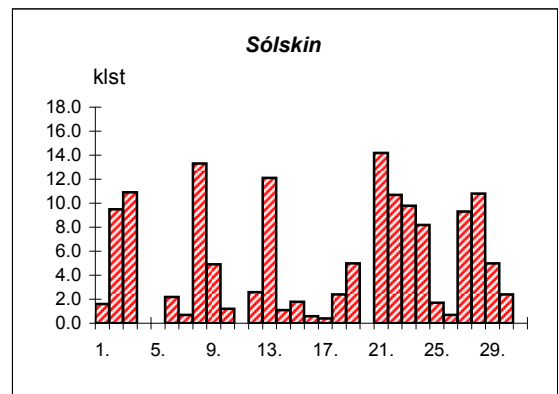
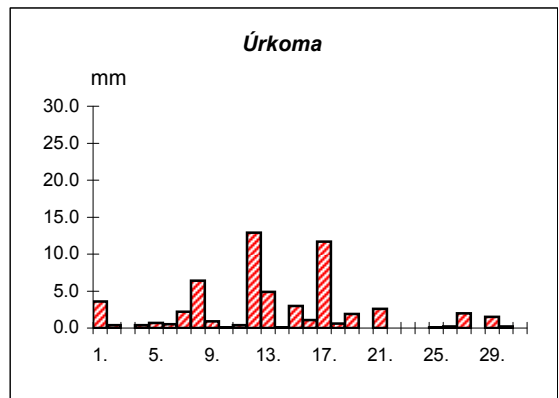
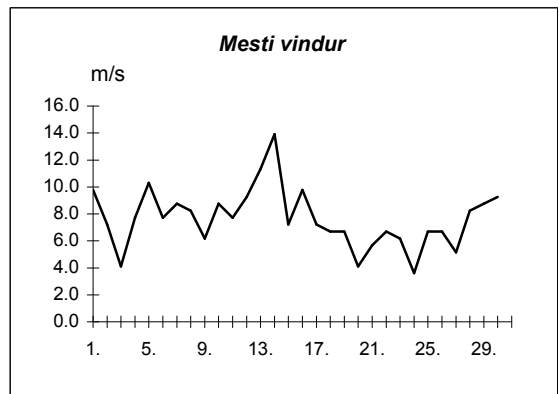
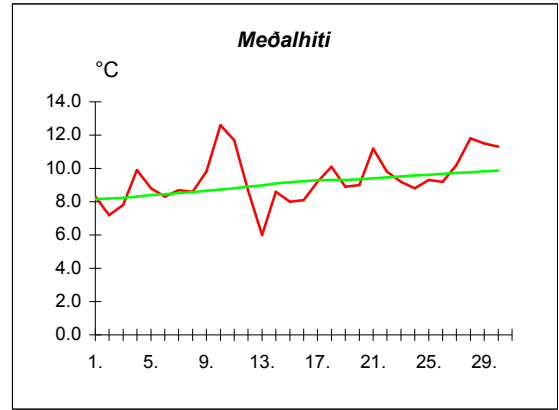
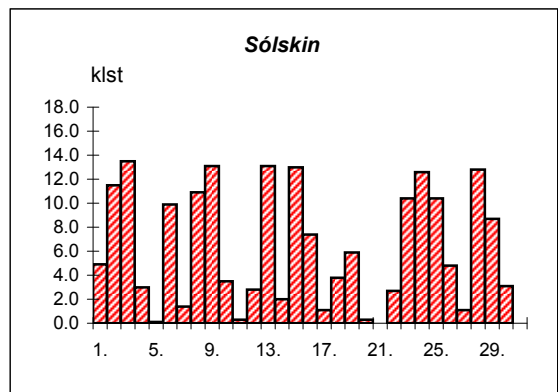
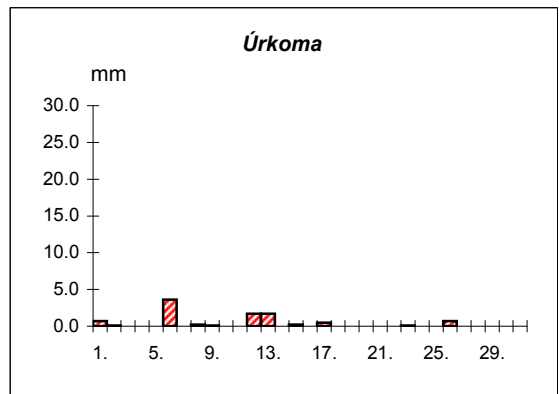
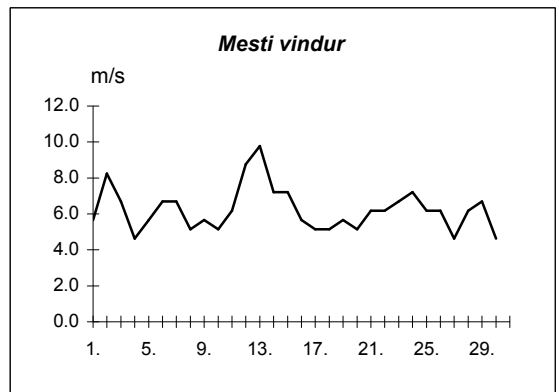
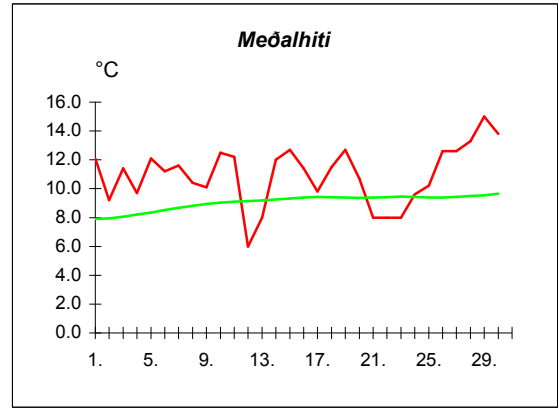


Dags	Meðalhiti (°C)	Hámark (°C)	Lágmark (°C)	Úrkoma (mm)	Úrkomutegund	Snjódýpt (cm)	Snjöhula (0-4)	Sólskin(klst)	Meðalvindur (m/s)	Mesti vindur (m/s)	Hviða (m/s)
1.	8.3	11.0	6.3	3.6	ri		0	1.6	5.6	9.8	16.0
2.	7.2	10.4	5.1	0.4	ri		0	9.5	3.8	7.2	10.3
3.	7.8	10.4	4.5	---			0	10.9	2.1	4.1	6.2
4.	9.9	12.7	6.8	0.4	ri		0	0.0	4.8	7.7	10.8
5.	8.8	12.0	7.7	0.7	ri		0	0.0	5.1	10.3	15.4
6.	8.3	10.3	6.0	0.5	ri		0	2.2	5.5	7.7	12.4
7.	8.7	10.9	7.6	2.2	ri		0	0.7	5.9	8.8	13.4
8.	8.6	12.2	5.2	6.4	ri		0	13.3	4.1	8.2	11.8
9.	9.8	12.6	6.2	0.9	ri		0	4.9	2.9	6.2	9.8
10.	12.6	14.0	10.2	0.1	ri		0	1.2	3.4	8.8	12.9
11.	11.7	14.0	11.0	0.4	ri		0	0.0	2.6	7.7	11.3
12.	8.7	13.6	7.4	12.9	ri		0	2.6	3.3	9.3	15.4
13.	6.0	9.0	2.3	4.9	ri		0	12.1	4.0	11.3	16.0
14.	8.6	11.5	4.9	0.1	sl		0	1.1	7.4	13.9	20.6
15.	8.0	10.3	6.6	3.0	ri		0	1.8	5.6	7.2	11.3
16.	8.1	9.5	6.2	1.1	ri		0	0.6	6.6	9.8	15.4
17.	9.2	11.2	7.4	11.7	ri		0	0.4	3.9	7.2	10.8
18.	10.1	13.5	8.5	0.6	ri		0	2.4	2.8	6.7	11.3
19.	8.9	11.3	7.5	1.9	ri		0	5.0	3.7	6.7	11.3
20.	9.0	10.6	7.4	0.0			0	0.0	2.3	4.1	7.2
21.	11.2	15.0	6.5	2.6	ri		0	14.2	2.8	5.7	9.8
22.	9.8	14.3	6.2	---			0	10.7	2.5	6.7	9.8
23.	9.2	11.6	8.3	---			0	9.8	3.6	6.2	9.8
24.	8.8	10.9	6.8	---			0	8.2	2.1	3.6	6.7
25.	9.3	12.1	7.2	0.1	ri		0	1.7	3.1	6.7	9.8
26.	9.2	12.2	8.4	0.2	ri		0	0.7	4.6	6.7	10.8
27.	10.2	13.5	7.6	2.0	ri		0	9.3	2.4	5.1	7.7
28.	11.8	16.2	6.6	---			0	10.8	4.1	8.2	13.4
29.	11.5	14.2	10.2	1.5	ri		0	5.0	5.9	8.8	13.4
30.	11.3	13.9	9.0	0.2	ri		0	2.4	4.9	9.3	16.0



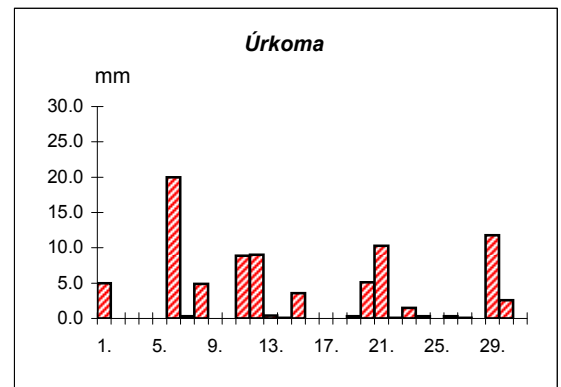
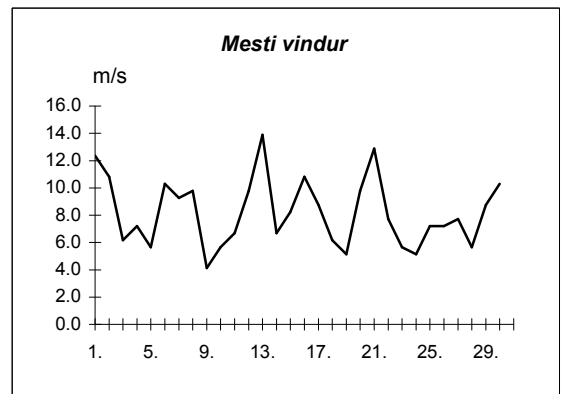
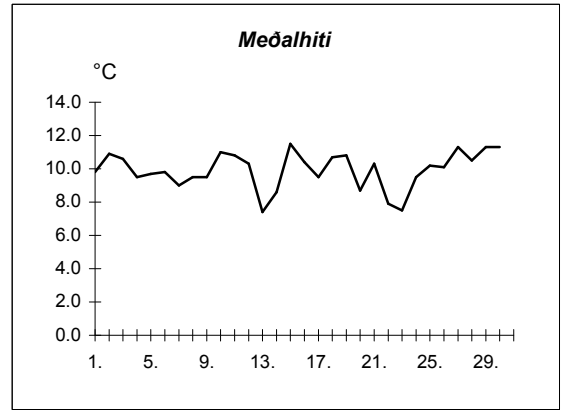
Meðalhiti	=	9.4 °C
Frávik frá meðaltali 1931-60	=	-0.1 °C
Meðalhámarkshiti	=	12.2 °C
Meðallágmarkshiti	=	7.1 °C
Úrkomumagn	=	58.4 mm
Hlutfall úrkomu af meðaltali 1931-60	=	142.0 %
Meðalvindhraði	=	4.0 m/s
Sólskinsstundir	=	143.1 klst

Dags	Meðalhiti (°C)	Hámark (°C)	Lágmark (°C)	Úrkoma (mm)	Úrkomutegund	Snjódýpt (cm)	Snjöhula (0-4)	Sólskin(klst)	Meðalvindur (m/s)	Mesti vindur (m/s)	Hviða (m/s)
1.	12.1	15.8	9.0	0.7	sl		0	4.9	2.8	5.7	12.4
2.	9.2	14.9	4.6	0.1	ri		0	11.5	3.8	8.2	12.4
3.	11.4	16.3	8.0	---			0	13.5	3.3	6.7	10.3
4.	9.7	13.2	3.5	---			0	3.0	2.0	4.6	8.8
5.	12.1	16.0	9.5	0.0			0	0.1	2.9	5.7	10.3
6.	11.2	14.9	8.1	3.6	ri		0	9.9	2.7	6.7	12.4
7.	11.6	14.4	8.8	0.0			0	1.4	3.5	6.7	11.3
8.	10.4	15.4	6.6	0.2	ri		0	10.9	1.9	5.1	10.3
9.	10.1	15.6	4.2	0.1	ri		0	13.1	3.1	5.7	8.2
10.	12.5	20.0	7.5	---			0	3.5	2.1	5.1	8.8
11.	12.2	13.5	10.5	0.0			0	0.3	1.9	6.2	12.9
12.	6.0	14.3	3.7	1.7	ri		0	2.8	5.9	8.8	13.4
13.	8.0	12.5	1.4	1.7	ri		0	13.1	2.3	9.8	14.9
14.	12.0	15.5	7.1	---			0	2.0	4.1	7.2	13.9
15.	12.7	16.3	12.0	0.2	ri		0	13.0	3.5	7.2	13.4
16.	11.4	15.0	7.0	---			0	7.4	3.9	5.7	13.9
17.	9.8	14.9	8.4	0.5	ri		0	1.1	1.8	5.1	7.7
18.	11.5	15.5	7.5	0.0			0	3.8	2.4	5.1	8.8
19.	12.7	18.0	7.5	0.0			0	5.9	3.0	5.7	10.3
20.	10.7	13.8	8.5	0.0			0	0.3	2.1	5.1	9.8
21.	8.0	13.0	7.2	---			0	0.0	3.0	6.2	40.2
22.	8.0	10.6	6.6	0.0			0	2.7	2.9	6.2	8.8
23.	8.0	11.1	5.2	0.1	ri		0	10.4	3.4	6.7	9.3
24.	9.6	15.1	5.8	---			0	12.6	2.7	7.2	10.8
25.	10.2	16.9	6.0	---			0	10.4	2.8	6.2	8.2
26.	12.6	18.5	8.4	0.7	ri		4	4.8	2.9	6.2	8.8
27.	12.6	15.7	10.0	0.0			0	1.1	1.8	4.6	7.7
28.	13.3	16.5	7.0	---			0	12.8	3.1	6.2	11.3
29.	15.0	19.1	12.0	0.0			0	8.7	2.5	6.7	11.3
30.	13.8	19.3	9.7	---			0	3.1	1.9	4.6	8.8



Meðalhiti	=	10.9 °C
Frávik frá meðaltali 1931-60	=	1.6 °C
Meðalhámarkshiti	=	15.4 °C
Meðallágmarkshiti	=	7.4 °C
Úrkomumagn	=	9.6 mm
Hlutfall úrkomu af meðaltali 1931-60	=	44.0 %
Meðalvindhraði	=	2.9 m/s
Sólskinsstundir	=	188.1 klst

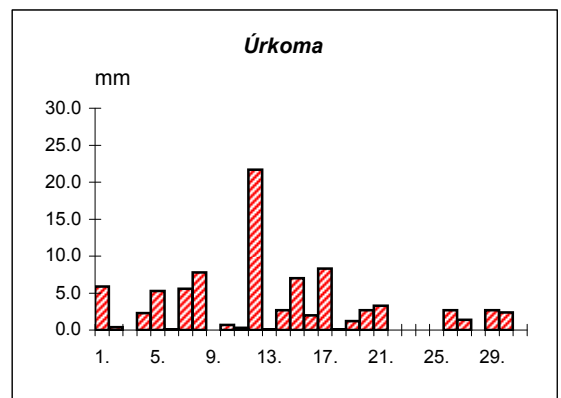
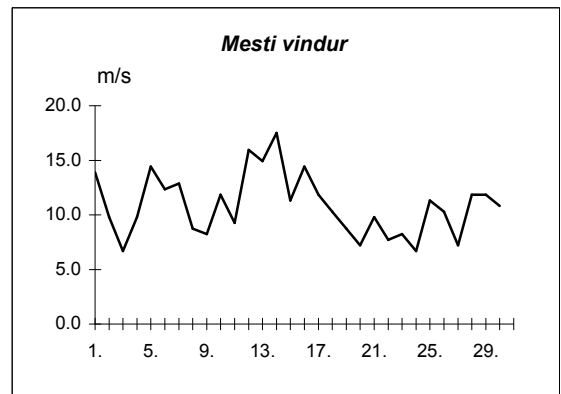
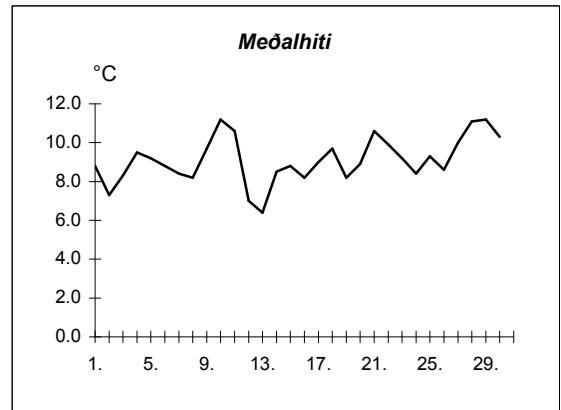
Dags	Meðalhiti (°C)	Hámark (°C)	Lágmark (°C)	Úrkoma (mm)	Úrkomutegund	Snjódýpt (cm)	Snjóhula (0-4)	Sólskin(klst)	Meðalvindur (m/s)	Mesti vindur (m/s)	Hviða (m/s)
1.	9.8	13.4	8.6	5.0	ri		0		6.6	12.4	19.6
2.	10.9	14.1	6.5	0.0			0		4.1	10.8	15.4
3.	10.6	14.6	4.9	---			0		3.1	6.2	8.2
4.	9.5	12.9	5.3	---			0		4.5	7.2	10.3
5.	9.7	10.9	9.0	---			0		2.9	5.7	7.2
6.	9.8	13.7	7.5	20.0	ri		0		5.6	10.3	15.4
7.	9.0	11.3	8.2	0.3	ri		0		5.6	9.3	12.9
8.	9.5	12.7	6.3	4.9	ri		0		4.8	9.8	14.4
9.	9.5	11.5	7.0	---			0		1.7	4.1	5.1
10.	11.0	14.8	7.3	0.0			0		2.7	5.7	6.7
11.	10.8	12.4	9.5	8.9	ri		0		3.6	6.7	8.8
12.	10.3	12.6	9.7	9.0	ri		0		5.1	9.8	14.9
13.	7.4	12.0	3.7	0.4	ri		0		7.4	13.9	24.7
14.	8.6	10.9	6.5	0.1	ri		0		2.9	6.7	9.8
15.	11.5	15.2	8.7	3.6	ri		0		3.6	8.2	12.4
16.	10.4	13.5	7.0	---			0		6.1	10.8	16.5
17.	9.5	11.6	8.3	---			0		4.6	8.8	9.8
18.	10.7	13.7	4.9	0.0			0		2.6	6.2	9.3
19.	10.8	13.5	7.5	0.3	ri		0		3.0	5.1	7.7
20.	8.7	13.0	8.0	5.1	ri		0		7.2	9.8	14.9
21.	10.3	12.6	6.9	10.3	ri		0		6.5	12.9	20.6
22.	7.9	12.9	6.5	0.1	ri		0		2.8	7.7	10.8
23.	7.5	9.4	5.7	1.5	ri		0		2.1	5.7	7.2
24.	9.5	12.8	5.6	0.3	ri		0		1.9	5.1	8.2
25.	10.2	15.0	4.8	---			0		2.8	7.2	9.8
26.	10.1	13.3	8.2	0.3	ri		0		2.6	7.2	11.3
27.	11.3	15.4	5.1	0.1	ri		0		3.2	7.7	11.3
28.	10.5	12.6	7.6	---			0		2.6	5.7	7.7
29.	11.3	13.7	10.0	11.8	ri		0		6.2	8.8	11.3
30.	11.3	13.5	9.9	2.6	ri		0		7.8	10.3	13.4



Meðalhiti	=	9.9 °C
Meðalhámarkshiti	=	13.0 °C
Meðallágmarkshiti	=	7.2 °C
Úrkomumagn	=	84.6 mm
Meðalvindhraði	=	4.2 m/s

Útgefandi : **Veðurstofa Íslands**  
 Heimilisfang : **Bústaðavegur 9**  
**150 Reykjavík**

Dags	Meðalhiti (°C)	Hámark (°C)	Lágmark (°C)	Úrkoma (mm)	Úrkomutegund	Snjódýpt (cm)	Snjöhula (0-4)	Sólskin(klíst)	Meðalvindur (m/s)	Mesti vindur (m/s)	Hviða (m/s)
1.	8.8	11.1	6.5	5.9	ri		0		9.7	13.9	19.0
2.	7.3	11.3	5.0	0.4	ri		0		5.9	9.8	13.4
3.	8.3	10.6	5.2	0.0			0		3.4	6.7	9.8
4.	9.5	11.8	7.2	2.3	ri		0		8.3	9.8	14.4
5.	9.2	10.9	8.4	5.3	ri		0		7.8	14.4	18.5
6.	8.8	11.0	7.1	0.1	ri		0		9.3	12.4	15.4
7.	8.4	9.5	7.6	5.6	ri		0		8.9	12.9	17.0
8.	8.2	10.6	5.9	7.8	ri		0		6.3	8.8	12.4
9.	9.7	13.4	4.8	0.0			0		4.8	8.2	11.3
10.	11.2	13.7	9.2	0.7	ri		0		6.4	11.8	14.9
11.	10.6	12.5	10.2	0.3	ri		0		4.4	9.3	12.9
12.	7.0	12.0	4.9	21.7	ri		0		11.1	16.0	20.6
13.	6.4	9.2	2.6	0.1	ri		0		5.9	14.9	18.0
14.	8.5	10.2	5.5	2.7	ri		0		10.8	17.5	24.7
15.	8.8	10.7	7.0	7.0	ri		0		9.0	11.3	16.0
16.	8.2	10.3	7.0	2.0	ri		0		10.3	14.4	18.5
17.	9.0	10.2	7.7	8.3	ri		0		5.8	11.8	15.4
18.	9.7	12.4	8.1	0.1	ri		0		5.1	10.3	13.9
19.	8.2	12.3	6.7	1.2	ri		0		5.4	8.8	12.9
20.	8.9	11.1	7.1	2.7	ri		0		5.1	7.2	9.3
21.	10.6	13.7	7.7	3.3	ri		0		7.3	9.8	12.4
22.	9.9	12.5	7.5	---			0		5.7	7.7	9.8
23.	9.2	11.6	7.5	---			0		5.4	8.2	10.8
24.	8.4	11.3	6.9	---			0		3.1	6.7	8.8
25.	9.3	10.6	7.3	0.0			0		5.1	11.3	15.4
26.	8.6	10.9	7.6	2.7	ri		0		6.2	10.3	13.9
27.	10.0	12.3	8.2	1.4	ri		0		4.2	7.2	9.3
28.	11.1	14.7	7.3	---			0		5.7	11.8	15.4
29.	11.2	13.4	10.1	2.7	ri		0		8.4	11.8	16.0
30.	10.3	13.7	8.6	2.4	ri		0		6.3	10.8	14.9



Meðalhiti	=	9.1 °C
Frávik frá meðaltali 1931-60	=	-0.1 °C
Meðalhámarkshiti	=	11.7 °C
Meðallágmarkshiti	=	7.1 °C
Úrkomumagn	=	86.7 mm
Hlutfall úrkomu af meðaltali 1931-60	=	161.0 %
Meðalvindhraði	=	6.7 m/s