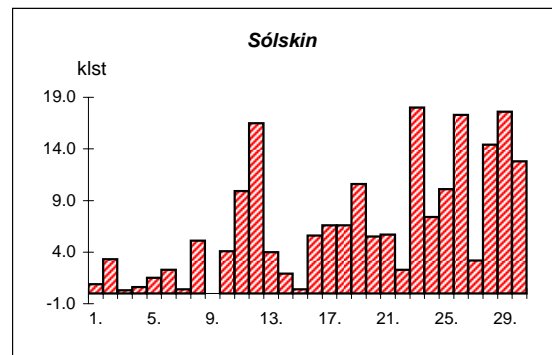
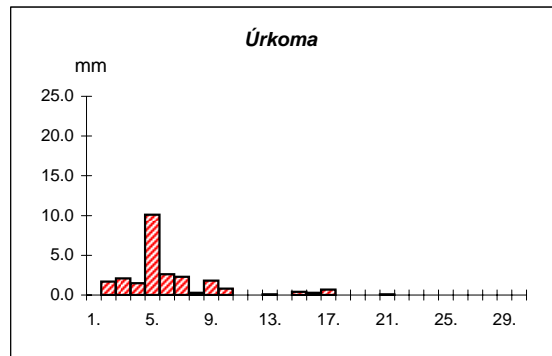
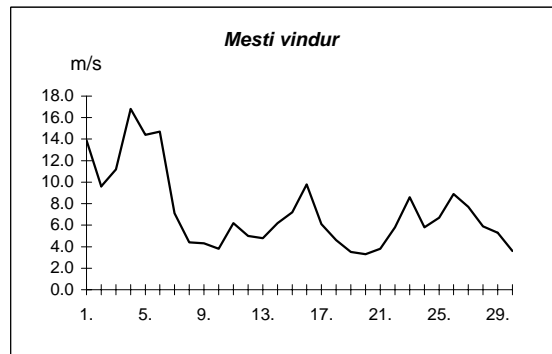
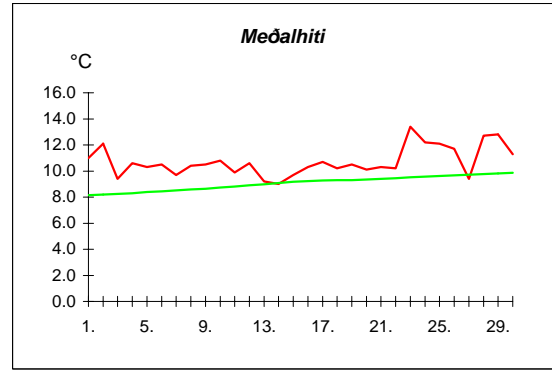


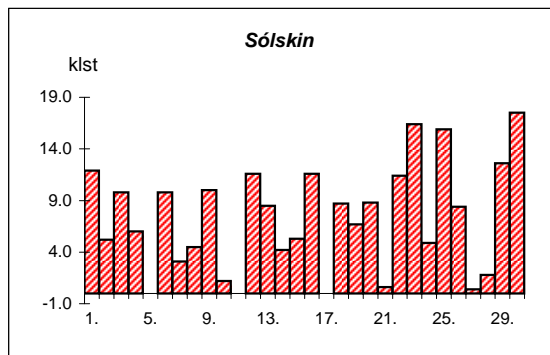
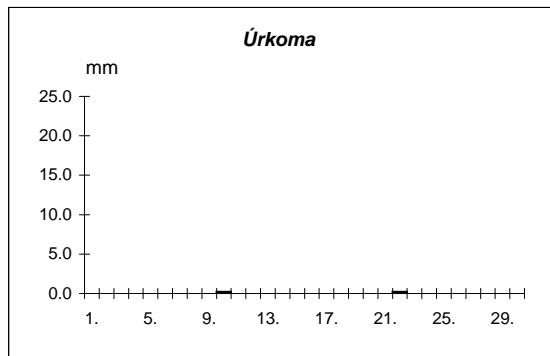
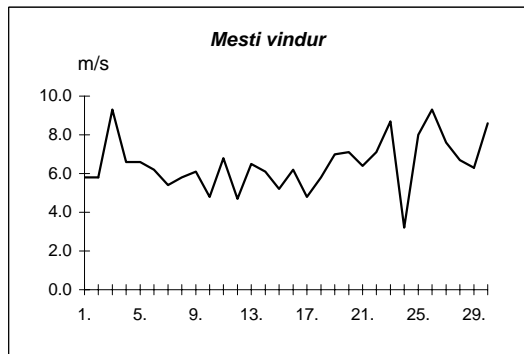
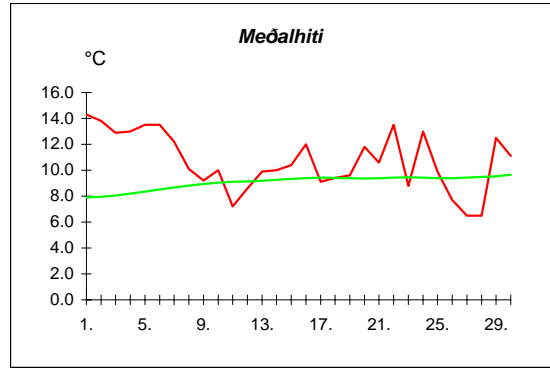
Reykjavík júní 2007

Dags	Meðalhiti (°C)	Hámark (°C)	Lágmark (°C)	Úrkoma (mm)	Úrkomutegund	Snjódýpt (cm)	Snjóhula (0-4)	Sólskin(klst)	Meðalvindur (m/s)	Mesti vindur (m/s)	Hviða (m/s)
1.	11.0	14.2	10.5	0.0	ri		0	0.9	6.5	13.9	19.2
2.	12.1	15.8	9.1	1.7	ri		0	3.3	5.7	9.6	16.8
3.	9.4	12.8	8.9	2.1	ri		0	0.3	7.9	11.2	17.9
4.	10.6	12.4	8.2	1.5	ri		0	0.6	9.7	16.8	21.8
5.	10.3	11.8	9.9	10.1	ri		0	1.5	8.5	14.4	19.2
6.	10.5	12.4	8.8	2.6	ri		0	2.3	8.2	14.7	20.4
7.	9.7	11.4	8.4	2.3	ri		0	0.4	2.0	7.1	11.3
8.	10.4	14.5	7.2	0.3	ri		0	5.1	1.6	4.4	6.9
9.	10.5	12.3	9.0	1.8	ri		0	0.0	1.5	4.3	6.9
10.	10.8	12.9	8.8	0.8	ri		0	4.1	2.0	3.8	5.7
11.	9.9	12.1	7.0				0	9.9	2.3	6.2	10.6
12.	10.6	13.8	7.6				0	16.5	3.0	5.0	7.9
13.	9.2	12.2	8.0	0.1	ri		0	4.0	2.6	4.8	6.5
14.	9.0	12.1	7.6				0	1.9	2.8	6.2	9.1
15.	9.7	12.3	8.1	0.4	ri		0	0.4	4.9	7.2	11.1
16.	10.3	12.9	8.4	0.3	ri		0	5.6	6.1	9.8	15.2
17.	10.7	13.2	8.3	0.7	ri		0	6.6	2.7	6.1	9.2
18.	10.2	12.2	8.5				0	6.6	2.2	4.6	6.7
19.	10.5	13.4	8.4				0	10.6	1.7	3.5	5.8
20.	10.1	12.4	7.6				0	5.5	1.5	3.3	5.1
21.	10.3	12.7	8.5	0.1	ri		0	5.7	2.2	3.8	6.1
22.	10.2	12.4	8.6	0.0	ri		0	2.3	3.3	5.8	8.0
23.	13.4	17.4	8.3				0	18.0	4.2	8.6	14.4
24.	12.2	16.4	7.6				0	7.4	2.3	5.8	8.4
25.	12.1	17.3	9.5				0	10.1	3.1	6.7	10.8
26.	11.7	16.3	8.2				0	17.3	4.3	8.9	14.2
27.	9.4	15.0	5.7				0	3.2	3.7	7.7	12.9
28.	12.7	17.5	8.3				0	14.4	2.6	5.9	8.9
29.	12.8	17.7	9.5				0	17.6	2.9	5.3	6.6
30.	11.3	15.2	8.4				0	12.8	1.7	3.6	6.0



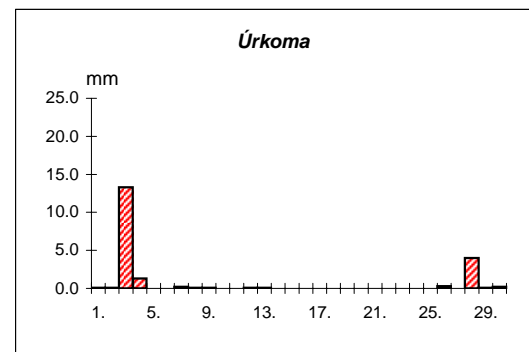
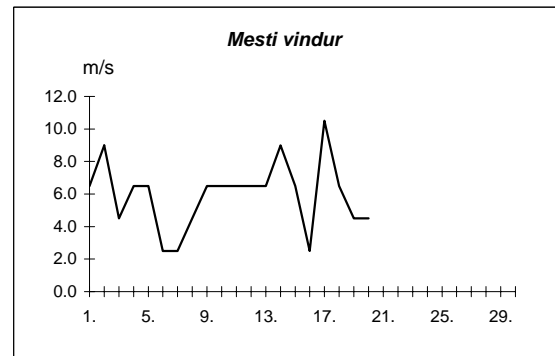
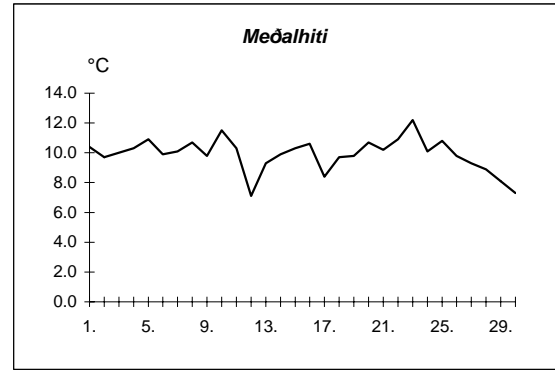
Meðalhiti	=	10.7 °C
Frávik frá meðaltali 1961-90	=	1.7 °C
Meðalhámarkshiti	=	13.8 °C
Meðallágmarkshiti	=	8.4 °C
Úrkomumagn	=	24.8 mm
Hlutfall úrkomu af meðaltali 1961-90	=	49.6 %
Meðalvindhraði	=	3.8 m/s
Sólskinsstundir	=	194.9 klst

Dags	Meðalhiti (°C)	Hámark (°C)	Lágmark (°C)	Úrkoma (mm)	Úrkomutegund	Snjódýpt (cm)	Snjöhula (0-4)	Sólskin(klst)	Meðalvindur (m/s)	Mesti vindur (m/s)	Hviða (m/s)
1.	14.3	18.3	10.2				0	11.9	3.1	5.8	11.6
2.	13.8	17.1	10.9				0	5.2	2.2	5.8	10.8
3.	12.9	16.8	8.4				0	9.8	4.2	9.3	13.0
4.	13.0	17.0	9.8				0	6.0	4.8	6.6	12.5
5.	13.5	16.0	11.5				0	0.0	3.6	6.6	12.4
6.	13.5	19.3	7.0				0	9.8	3.5	6.2	11.3
7.	12.2	16.5	10.2				0	3.1	2.9	5.4	7.7
8.	10.1	14.3	8.4				0	4.5	2.2	5.8	7.7
9.	9.2	13.7	7.5				0	10.0	2.9	6.1	8.3
10.	10.0	12.5	7.2	0.2	ri		0	1.2	2.2	4.8	6.8
11.	7.2	11.8	6.6	0.0	ri		0	0.0	4.0	6.8	10.1
12.	8.6	12.8	4.2				0	11.6	1.9	4.7	6.7
13.	9.9	13.5	5.9				0	8.5	3.5	6.5	9.9
14.	10.0	13.0	8.0				0	4.2	3.4	6.1	8.9
15.	10.4	13.7	7.3				0	5.3	2.1	5.2	7.4
16.	12.0	17.7	7.0				0	11.6	2.5	6.2	9.2
17.	9.1	14.9	6.8				0	0.0	2.1	4.8	6.7
18.	9.4	11.5	8.2				0	8.7	2.6	5.8	8.3
19.	9.6	13.6	6.4				0	6.7	2.4	7.0	9.5
20.	11.8	16.5	7.0				0	8.8	2.9	7.1	10.7
21.	10.6	12.6	9.9	0.0	ri		0	0.6	3.0	6.4	9.4
22.	13.5	19.5	8.2	0.2	ri		0	11.4	2.6	7.1	11.8
23.	8.8	19.2	8.6				0	16.4	4.9	8.7	13.6
24.	13.0	18.5	6.2				0	4.9	1.7	3.2	6.0
25.	9.9	18.2	9.9				0	15.9	4.5	8.0	13.0
26.	7.7	11.0	6.0				0	8.4	5.1	9.3	15.1
27.	6.5	9.1	5.8				0	0.4	5.3	7.6	12.1
28.	6.5	9.0	4.6	0.0	ri		0	1.8	2.7	6.7	9.6
29.	12.5	18.6	7.0	0.0	ri		0	12.6	2.5	6.3	9.1
30.	11.1	16.2	8.0				0	17.5	3.8	8.6	13.3



Meðalhiti	=	10.7 °C
Frávik frá meðaltali 1961-90	=	1.6 °C
Meðalhámarkshiti	=	15.1 °C
Meðallágmarkshiti	=	7.8 °C
Úrkomumagn	=	0.4 mm
Hlutfall úrkomu af meðaltali 1961-90	=	1.4 %
Meðalvindhraði	=	3.2 m/s
Sólskinsstundir	=	216.8 klst

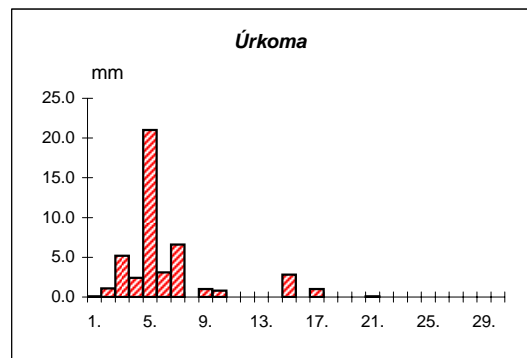
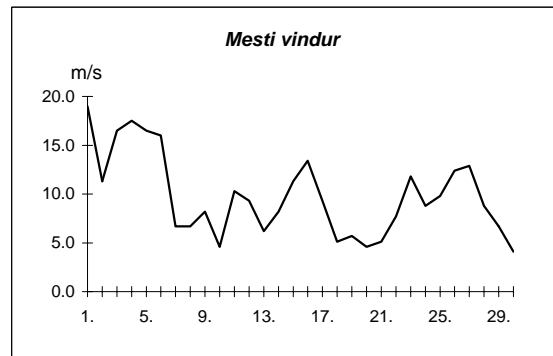
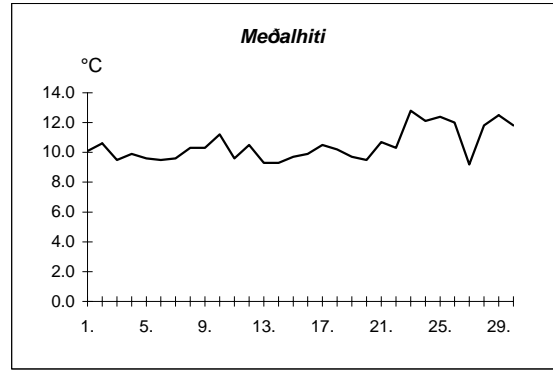
Dags	Meðalhiti (°C)	Hámark (°C)	Lágmark (°C)	Úrkoma (mm)	Úrkomutegund	Snjódýpt (cm)	Snjöhula (0-4)	Sólskin(klst)	Meðalvindur (m/s)	Mesti vindur (m/s)	Hviða (m/s)
1.	10.4	13.7	7.8	0.1	ri		0		4.6	6.5	
2.	9.7	11.6	8.0	0.1	ri		0		4.6	9.0	
3.	10.0	12.7	8.0	13.3	ri		0		2.9	4.5	
4.	10.3	12.8	8.2	1.3	ri		0		4.1	6.5	
5.	10.9	13.6	8.5				0		2.9	6.5	
6.	9.9	13.0	8.0	0.0	ri		0		1.8	2.5	
7.	10.1	11.8	8.3	0.2	ri		0		1.5	2.5	
8.	10.7	14.2	9.5	0.1	ri		0		2.2	4.5	
9.	9.8	12.1	8.2	0.1	ri		0		2.7	6.5	
10.	11.5	13.5	8.8	0.0			0		2.8	6.5	
11.	10.3	15.1	9.0				0		2.9	6.5	
12.	7.1	11.3	4.8	0.1	ri		0		2.9	6.5	
13.	9.3	16.0	4.2	0.1	ri		0		3.9	6.5	
14.	9.9	12.9	7.2				0		4.5	9.0	
15.	10.3	12.9	6.7				0		3.9	6.5	
16.	10.6	13.9	6.6				0		0.7	2.5	
17.	8.4	12.4	8.0				0		7.2	10.5	
18.	9.7	13.5	6.3				0		3.8	6.5	
19.	9.8	11.7	7.7				0		1.5	4.5	
20.	10.7	13.2	8.8				0		1.9	4.5	
21.	10.2	12.4	9.0				0		3.4		
22.	10.9	12.6	8.0				0		4.1		
23.	12.2	15.6	10.4				0		8.9		
24.	10.1	12.8	7.2				0		4.7		
25.	10.8	15.3	8.3				0		3.5		
26.	9.8	13.4	6.5	0.3	ri		0		9.3		
27.	9.3	11.9	7.1				0		10.6		
28.	8.9	11.4	6.3	4.0	ri		0		5.8		
29.	8.1	11.7	6.6	0.1	ri		0		4.8		
30.	7.3	10.6	4.7	0.2	ri		0		2.8		



Meðalhiti	=	9.9 °C
Meðalhámarkshiti	=	13.0 °C
Meðallágmarkshiti	=	7.6 °C
Úrkomumagn	vantar	= 20.0 mm
Meðalvindhraði	=	4.0 m/s

Útgefandi : **Veðurstofa Íslands**
 Heimilisfang : **Bústaðavegur 9**
150 Reykjavík

Dags	Meðalhiti (°C)	Hámark (°C)	Lágmark (°C)	Úrkoma (mm)	Úrkomutegund	Snjódýpt (cm)	Snjöhula (0-4)	Sólskin(klst)	Meðalvindur (m/s)	Mesti vindur (m/s)	Hviða (m/s)
1.	10.1	13.6	9.5	0.1	ri		0		12.8	19.0	25.2
2.	10.6	12.7	8.4	1.1	ri		0		7.4	11.3	18.0
3.	9.5	11.2	8.9	5.2	ri		0		12.4	16.5	21.6
4.	9.9	10.9	8.3	2.4	ri		0		13.5	17.5	24.2
5.	9.6	11.0	8.6	21.0	ri		0		10.5	16.5	22.7
6.	9.5	11.9	8.9	3.1	ri		0		9.3	16.0	22.7
7.	9.6	11.4	7.1	6.6	ri		0		4.2	6.7	10.3
8.	10.3	13.7	6.7				0		3.2	6.7	9.8
9.	10.3	12.2	9.1	1.0	ri		0		4.4	8.2	10.8
10.	11.2	13.6	9.2	0.8	ri		0		3.0	4.6	6.2
11.	9.6	13.6	6.6				0		7.2	10.3	13.4
12.	10.5	13.9	7.5				0		4.3	9.3	11.8
13.	9.3	12.6	8.6				0		3.9	6.2	8.2
14.	9.3	11.2	8.2				0		4.4	8.2	11.3
15.	9.7	11.0	7.9	2.8	ri		0		7.9	11.3	14.4
16.	9.9	12.0	8.7	0.0	ri		0		9.1	13.4	19.0
17.	10.5	12.3	8.0	1.0	ri		0		4.5	9.3	12.9
18.	10.2	12.4	8.6				0		2.7	5.1	7.2
19.	9.7	14.0	7.5				0		1.8	5.7	7.2
20.	9.5	13.5	5.7				0		2.2	4.6	6.2
21.	10.7	13.5	9.0	0.1	ri		0		3.0	5.1	6.7
22.	10.3	13.8	7.9				0		4.9	7.7	10.3
23.	12.8	17.8	8.0				0		8.4	11.8	15.4
24.	12.1	15.9	8.1				0		4.1	8.8	10.8
25.	12.4	17.1	10.2				0		5.6	9.8	12.4
26.	12.0	16.7	8.4				0		6.9	12.4	15.4
27.	9.2	15.8	6.6				0		8.8	12.9	16.5
28.	11.8	16.3	7.9				0		5.6	8.8	10.8
29.	12.5	16.2	8.9				0		5.0	6.7	10.3
30.	11.8	15.3	9.1				0		2.4	4.1	6.2



Meðalhiti	=	10.5 °C
Frávik frá meðaltali 1961-90	=	1.8 °C
Meðalhámarkshiti	=	13.6 °C
Meðallágmarkshiti	=	8.2 °C
Úrkomumagn	=	45.3 mm
Hlutfall úrkomu af meðaltali 1961-90	=	66.8 %
Meðalvindhraði	=	6.1 m/s