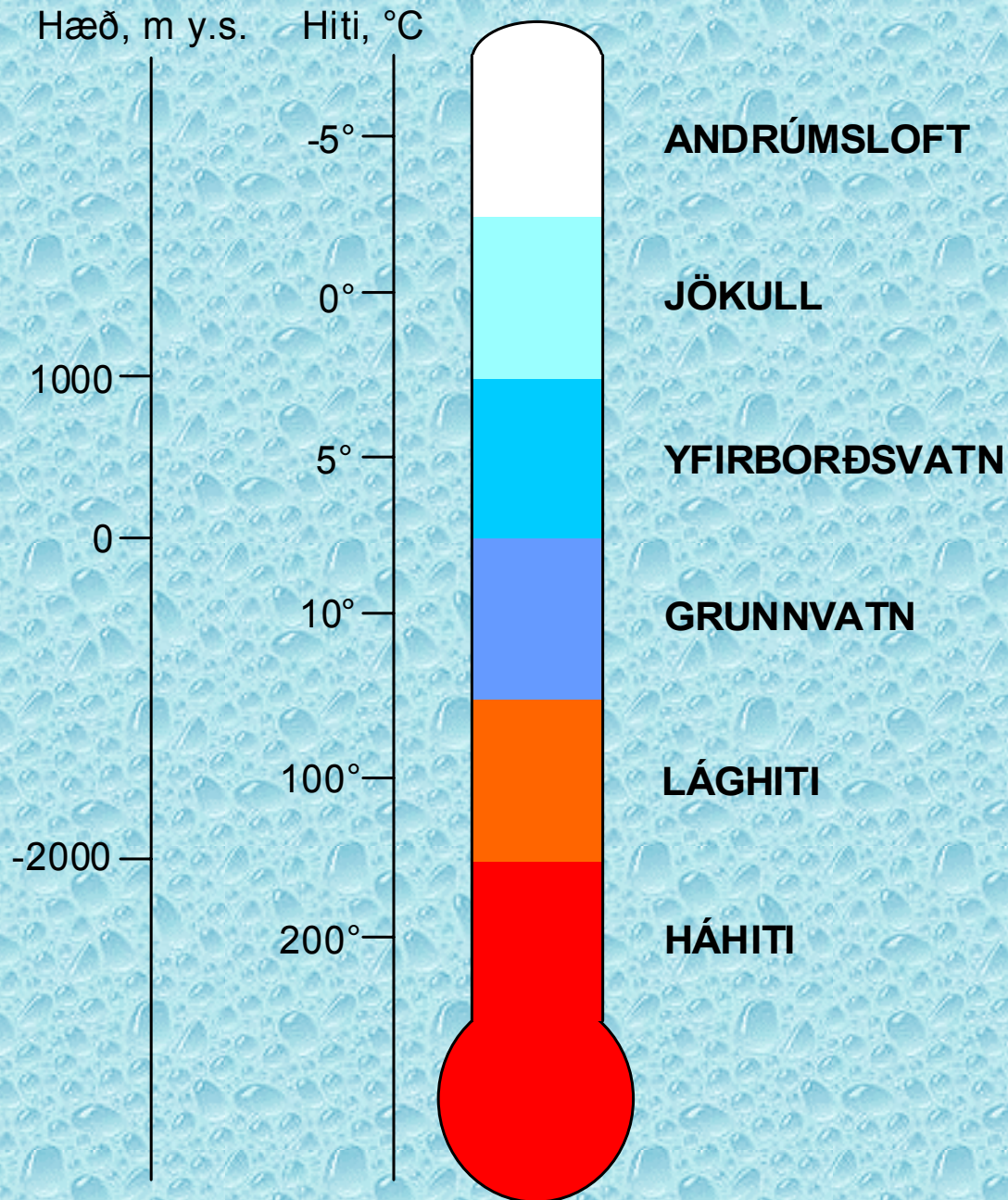
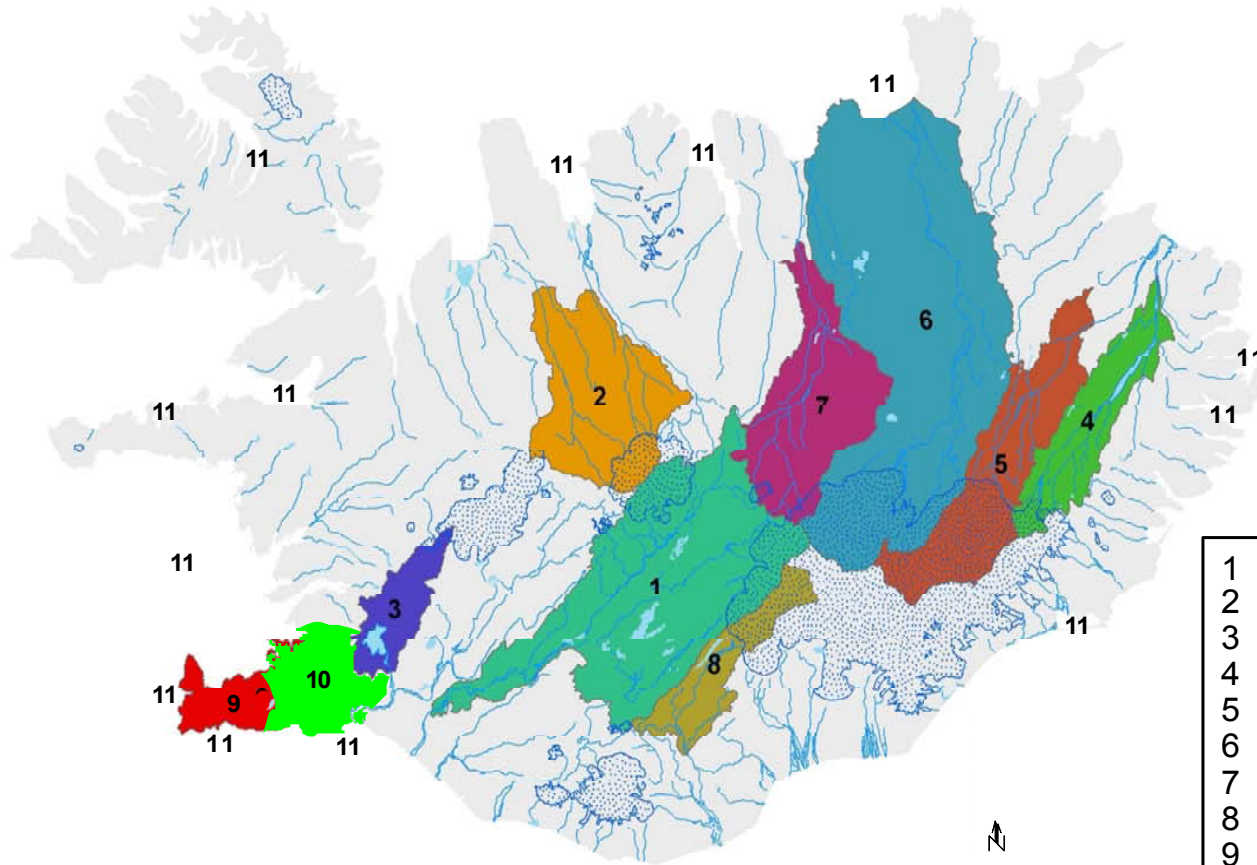


NOTKUN
VATNAMÆLINGAGAGNA
VIÐ LÍKANGERÐ

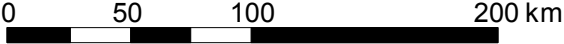
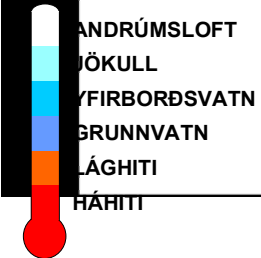
Vatnarannsóknir á Íslandi



Líkansvæði



- 1 Þjorsár-Tungnaársvæði
- 2 Blanda og Vestur-Jökulsá
- 3 Þingvallavatn
- 4 Jökulsá í Fljótssdal, Kelduá og Fellsá
- 5 Jökulsá á Dal
- 6 Jökulsá á Fjöllum, Mývatn og Laxá
- 7 Skjálfandafljót
- 8 Skaftá
- 9 Reykjanes
- 10 Höfuðborgarsvæði
- 11 Sjávarlíkön



Hvers vegna líkan?

Segja fyrir um breytingar á umhverfinu vegna framkvæmda



ANDRÚMSLOFT

JÖKULL

YFIRBORÐSVATN

GRUNNVATN

LÁGHITI

HÁHITI

Líkangerðir

1. Svæðislíkön
2. Staðbundin líkön



ANDRÚMSLOFT

JÖKULL

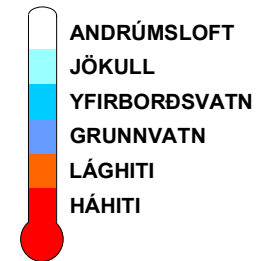
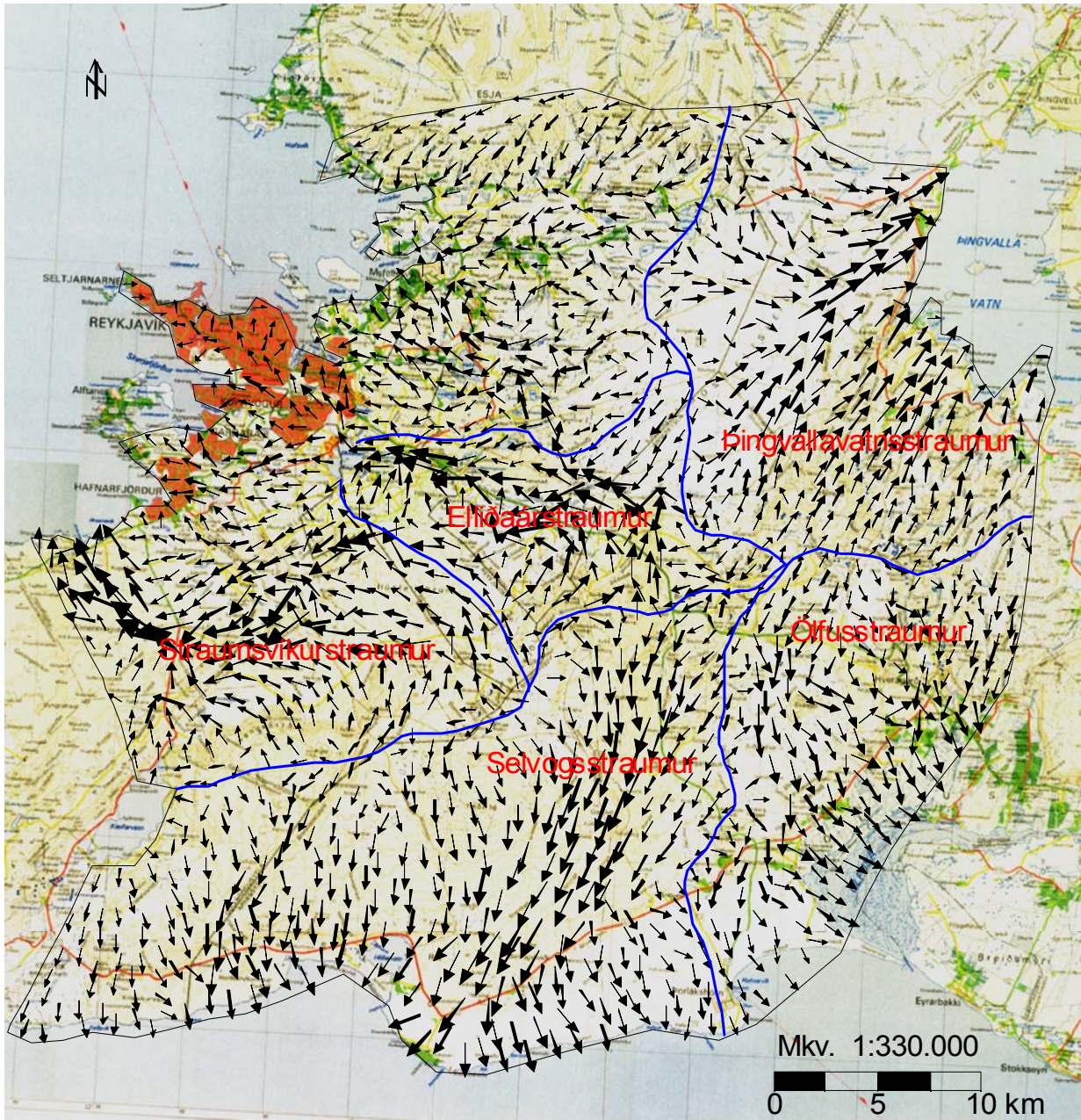
YFIRBORÐSVATN

GRUNNVATN

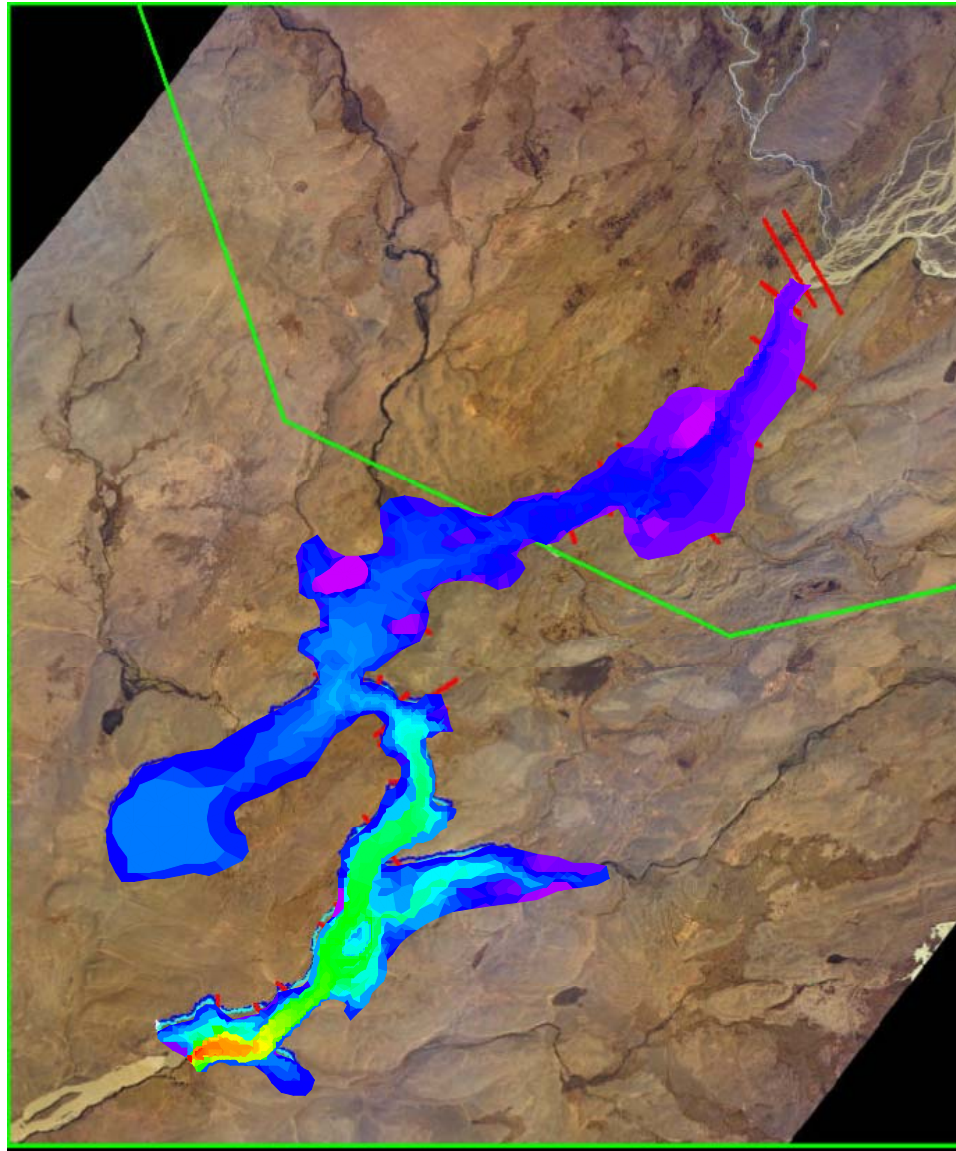
LÁGHITI

HÁHITI

Höfuðborgarsvæði, grunnvatnslíkan



Efri-Þjórsá, rennislíkan



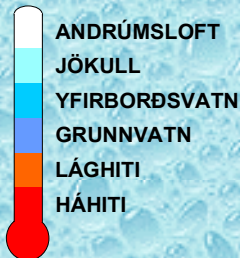
Vatnafræðileg gögn

Gerð:

1. Svæðisbundin gögn
2. Tímaraða gögn og stakar mælingar

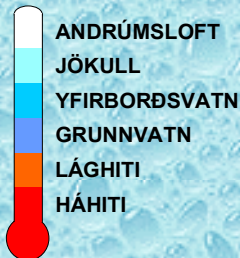
Notkun:

1. Inntaksgögn
2. Samanburðargögn



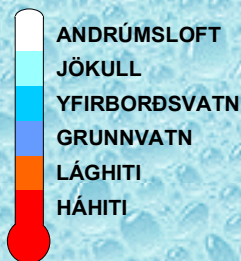
Svæðisbundin gögn

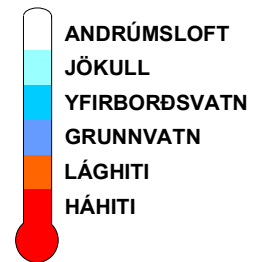
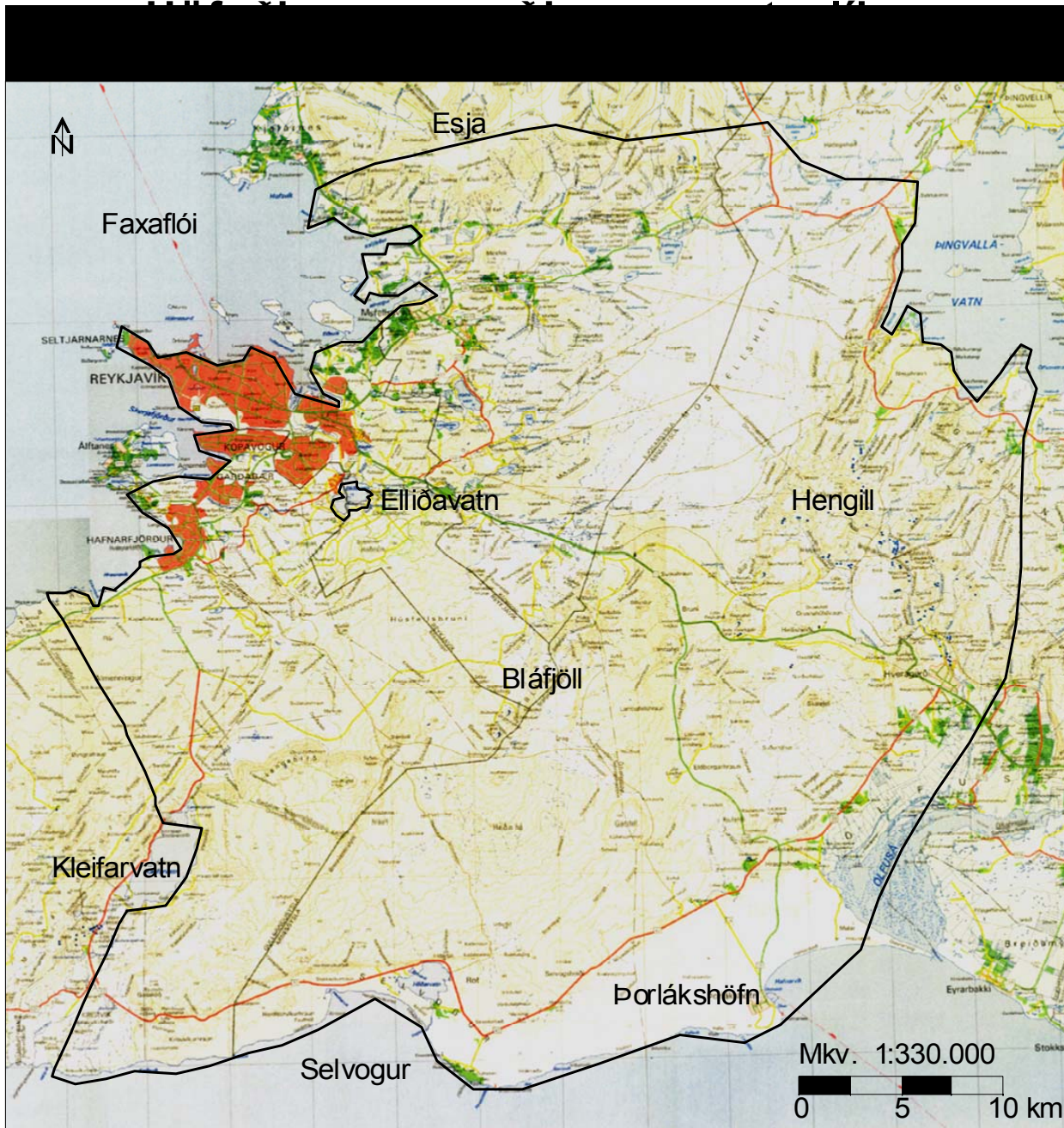
1. Landakort
2. Sjókort
3. Gróðurkort
4. Jarðfræðikort
5. Veðurkort
6. Jöklakort



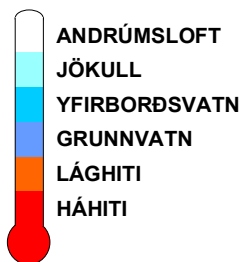
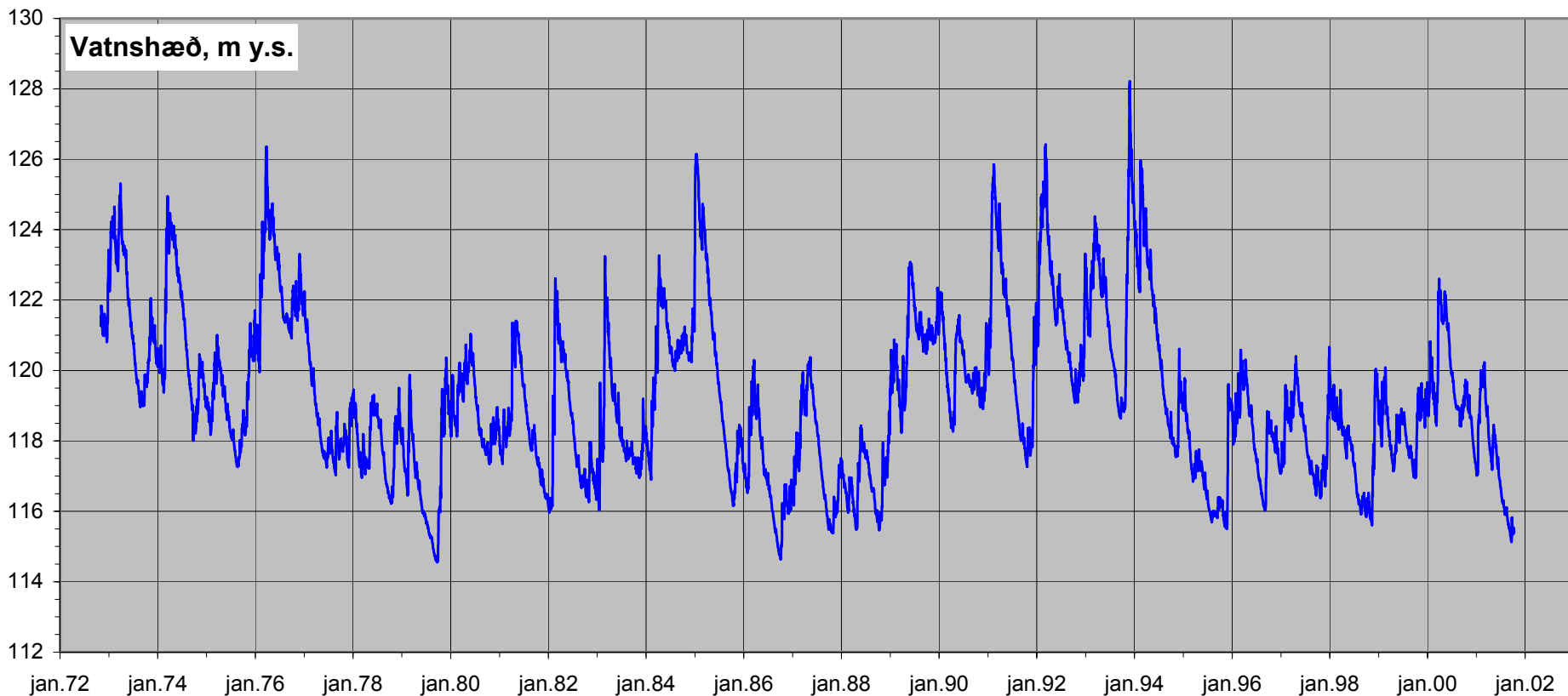
Tímaraða gögn og stakar mælingar

1. Grunnvatnshæð
2. Vatnshæð í ám og vötn
3. Rennsli
4. Vatnsvinnsla
5. Hiti
6. Úrkoma
7. Aurburður
8. Vatnshraði
9. Afkomumælingar jökla
10. Efnamælingar

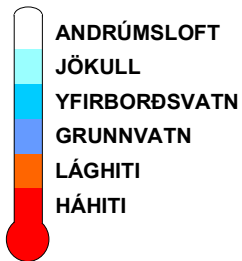
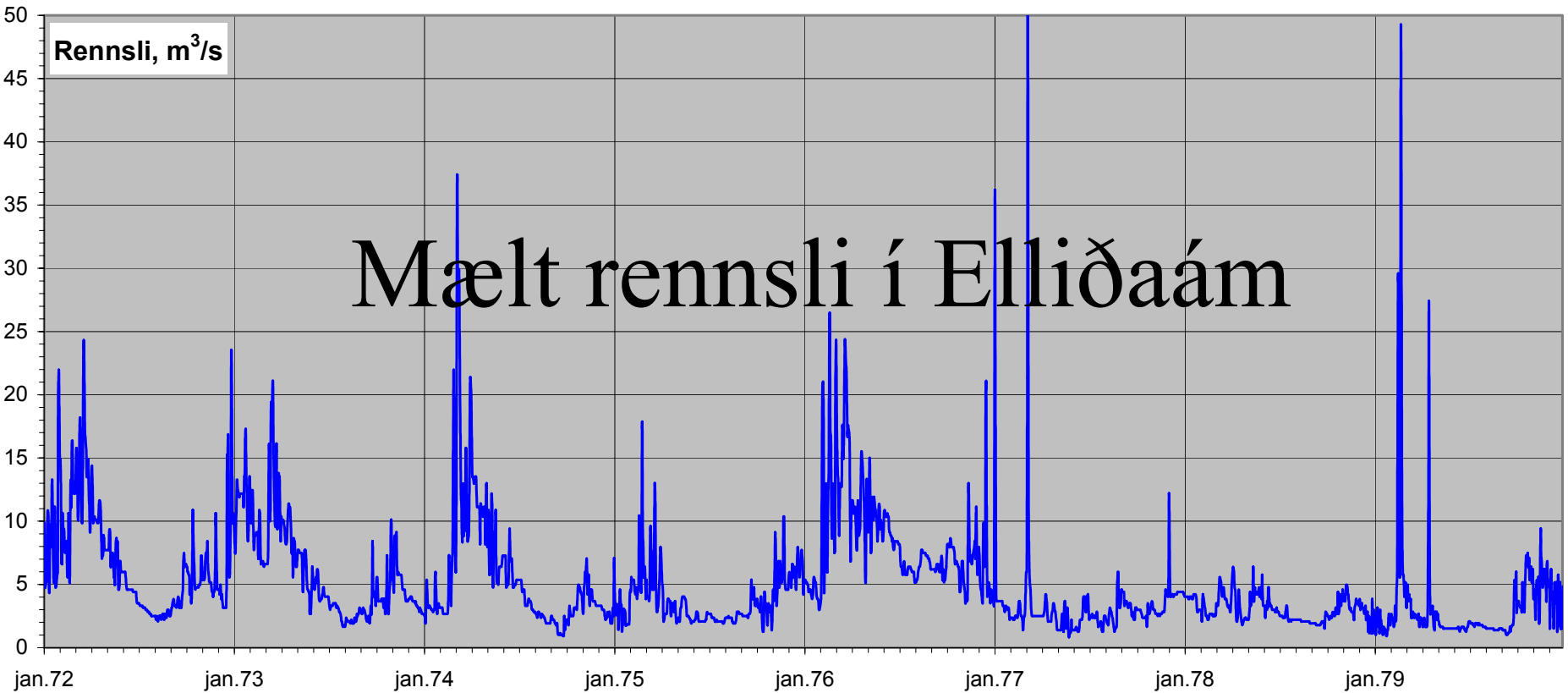




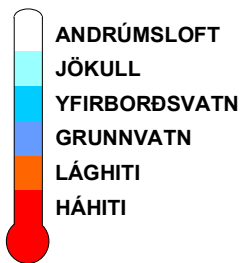
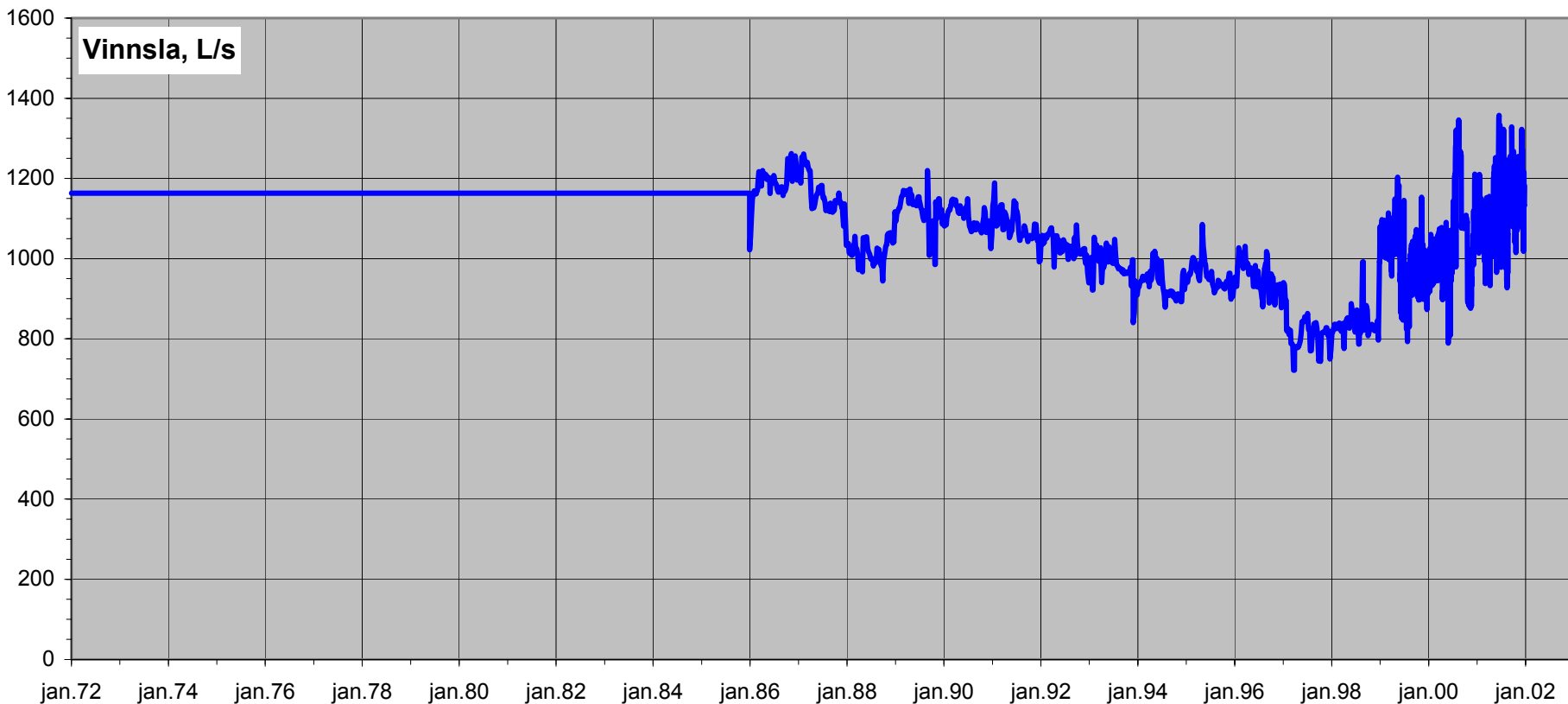
Mæld grunnvatnshæð við Þorgeirsstaði í Heiðmörk, vhm189



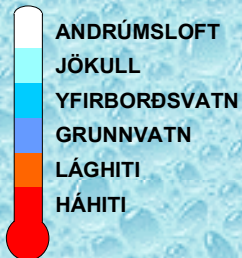
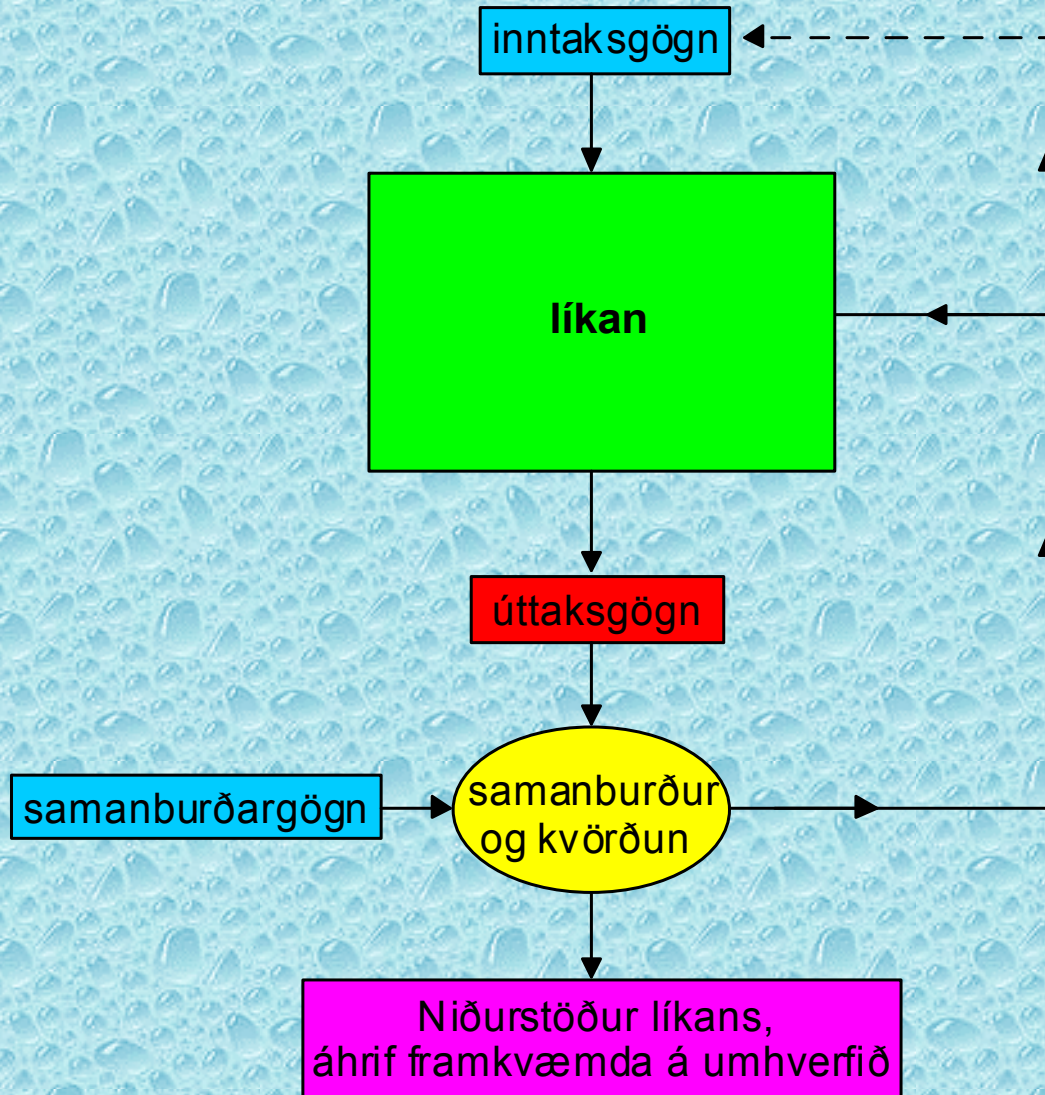
Mælt rennsli í Elliðaám 1972 - 1979



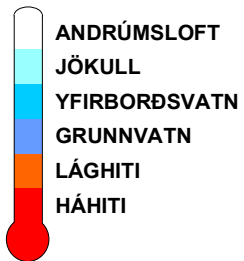
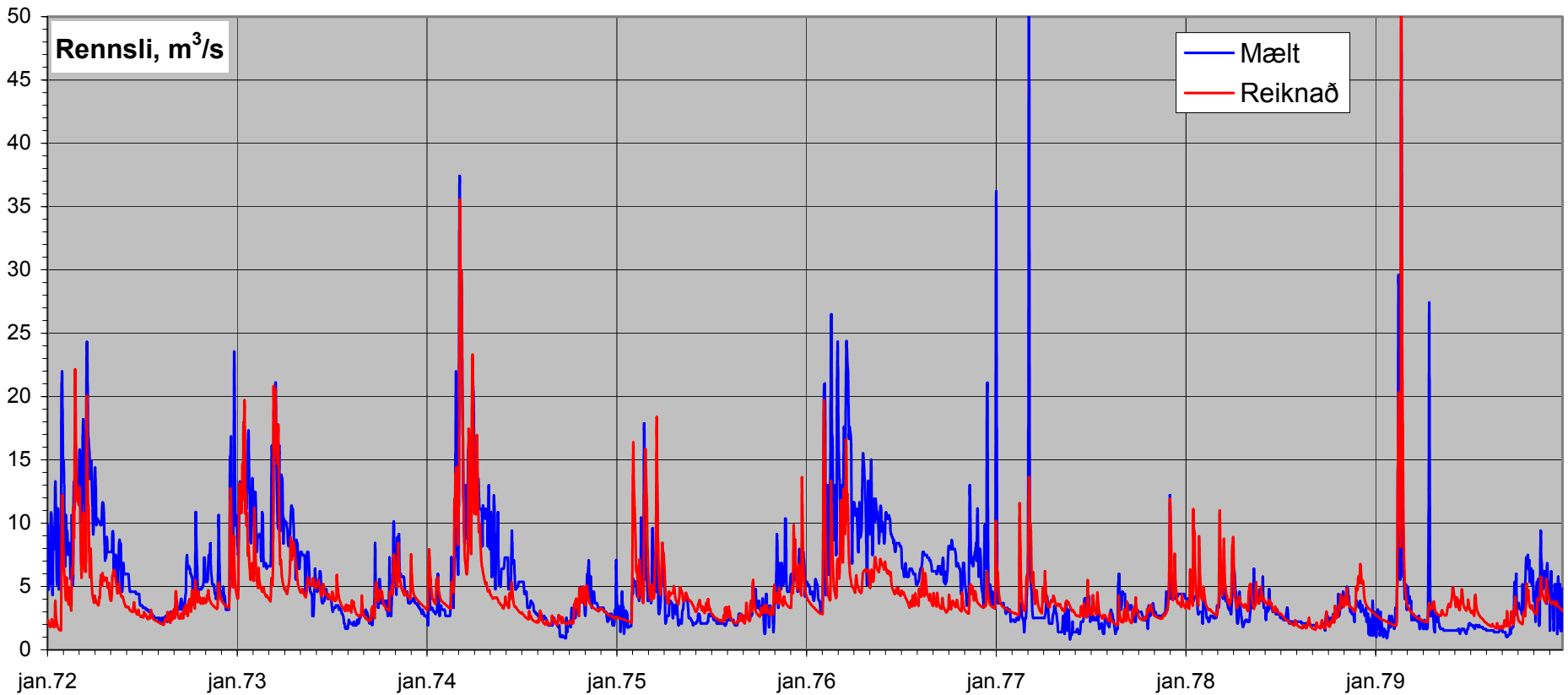
Heildarvatnsvinnsla á höfuðborgarsvæði



Samspil líkans og vatnafræðilegra gagna



Mælt og reiknað rennsli í Elliðaám 1972 - 1979



Grunnvatnshæð í þversniði frá Laugarnesi til Þorlákshafnar

