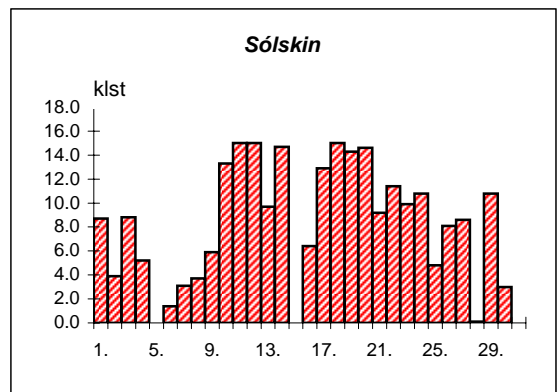
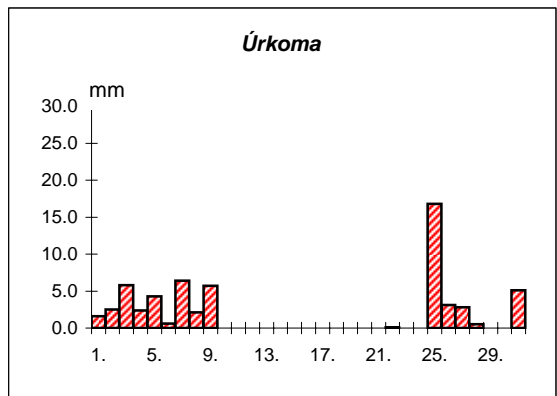
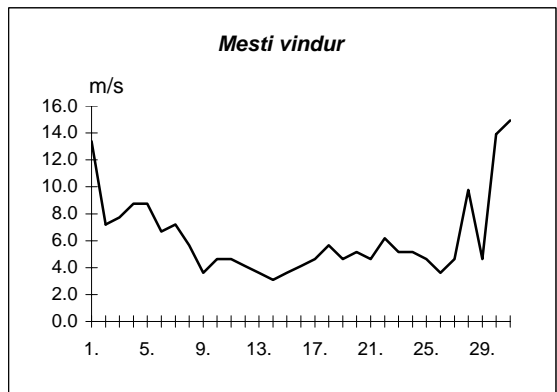
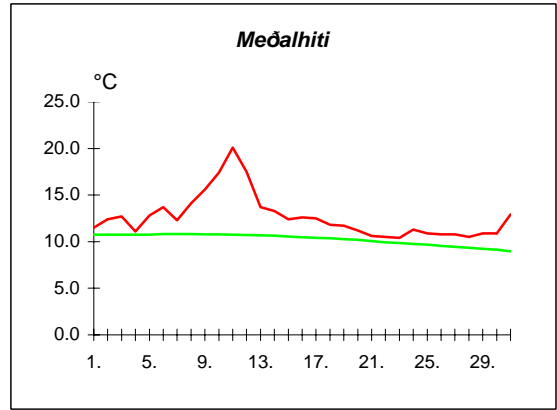
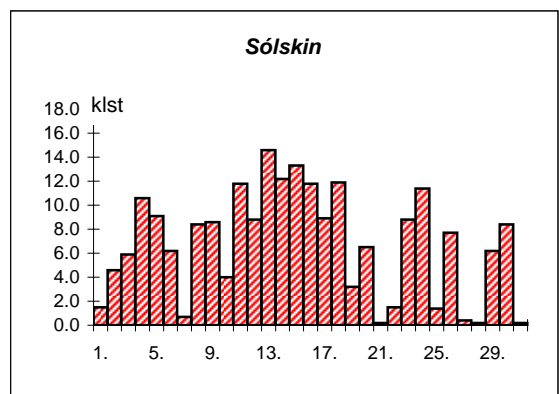
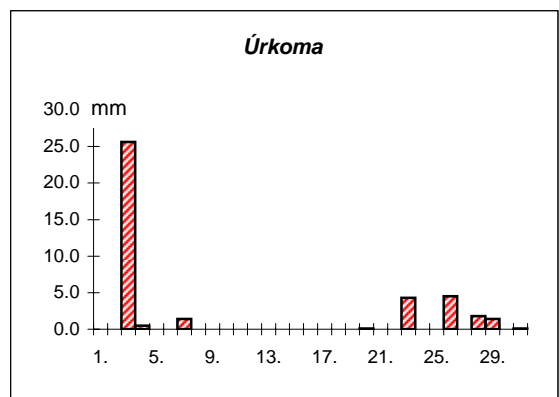
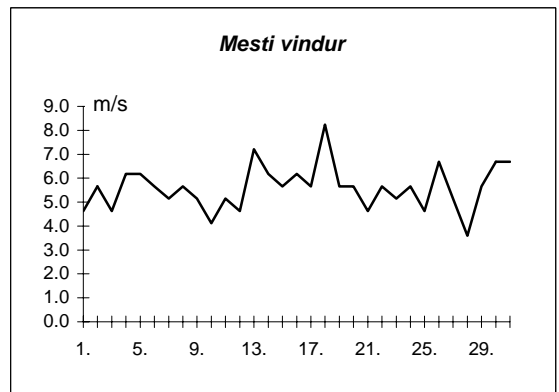
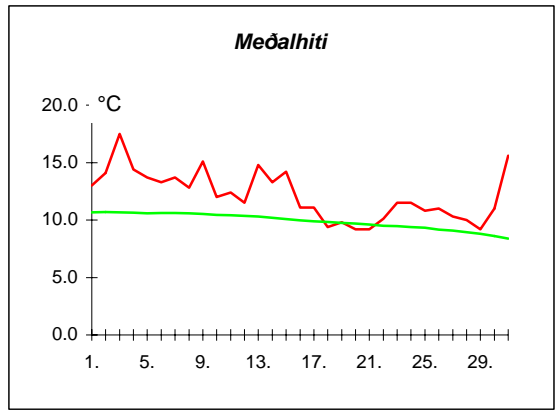


Dags	Meðalhiti (°C)	Hámark (°C)	Lágmark (°C)	Úrkoma (mm)	Úrkomutegund	Snjóþýpt (cm)	Snjóhula (0-4)	Sólskin(klst)	Meðalvindur (m/s)	Mesti vindur (m/s)	Hviða (m/s)
1.	11.5	14.1	9.5	1.6	ri		0	8.7	7.9	13.4	19.6
2.	12.4	14.6	10.6	2.5	ri		0	3.9	2.6	7.2	10.3
3.	12.7	14.5	11.4	5.8	ri		0	8.8	4.3	7.7	10.8
4.	11.1	13.6	8.8	2.4	ri		0	5.2	5.3	8.8	13.9
5.	12.8	15.0	10.4	4.3	sl		0	0.0	4.3	8.8	13.4
6.	13.7	15.5	11.9	0.6	ri		0	1.4	4.8	6.7	11.3
7.	12.3	14.7	10.8	6.4	ri		0	3.1	4.3	7.2	12.4
8.	14.1	18.6	10.7	2.1	ri		0	3.7	3.1	5.7	9.8
9.	15.6	20.7	11.6	5.7	ri		0	5.9	2.1	3.6	5.1
10.	17.4	20.9	13.1	0.0			0	13.3	2.0	4.6	7.2
11.	20.1	24.8	15.4	---			0	15.0	2.8	4.6	7.2
12.	17.5	22.2	14.2	---			0	15.0	1.6	4.1	5.7
13.	13.7	18.2	11.8	---			0	9.7	1.7	3.6	5.1
14.	13.3	16.3	10.8	---			0	14.7	1.7	3.1	4.6
15.	12.4	15.0	9.4	---			0	0.0	1.7	3.6	4.6
16.	12.6	15.0	11.1	---			0	6.4	1.8	4.1	6.2
17.	12.5	14.7	10.5	0.0			0	12.9	3.0	4.6	6.7
18.	11.8	15.0	7.3	0.0			0	15.0	2.6	5.7	9.3
19.	11.7	15.5	6.7	---			0	14.3	2.3	4.6	6.7
20.	11.2	15.5	7.3	---			0	14.6	2.2	5.1	8.2
21.	10.6	14.2	7.1	---			0	9.2	1.8	4.6	7.2
22.	10.5	14.0	7.2	0.1	ri		0	11.4	2.3	6.2	8.8
23.	10.4	14.6	5.6	---			0	9.9	2.7	5.1	8.2
24.	11.3	15.5	6.4	---			0	10.8	2.3	5.1	7.2
25.	10.9	13.7	9.4	16.8	ri		0	4.8	2.1	4.6	7.7
26.	10.8	13.5	8.4	3.1	ri		0	8.1	1.8	3.6	5.7
27.	10.8	13.5	8.4	2.8	ri		0	8.6	1.8	4.6	6.2
28.	10.5	12.9	8.3	0.5	ri		0	0.1	5.6	9.8	16.5
29.	10.9	14.6	7.2	0.0			0	10.8	1.8	4.6	7.2
30.	10.9	14.6	7.1	---			0	3.0	8.4	13.9	22.1
31.	12.9	14.5	10.2	5.1	ri		0	0.0	8.5	14.9	22.1



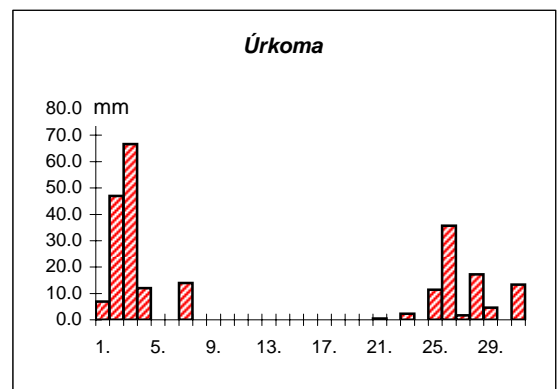
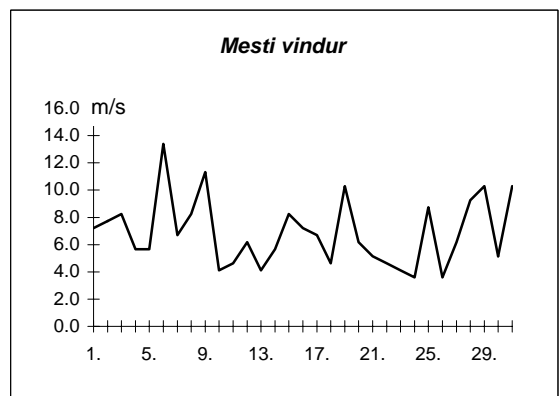
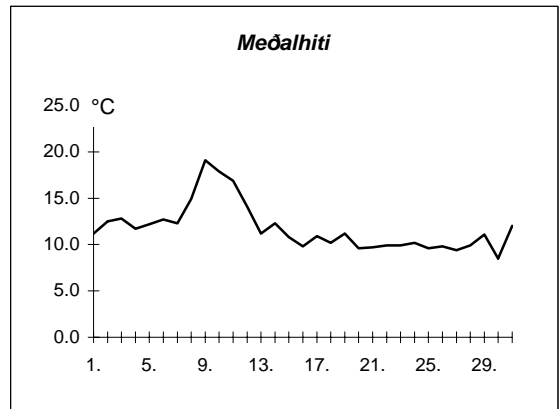
Meðalhiti	=	12.6 °C
Frávik frá meðaltali 1931-60	=	1.8 °C
Meðalhámarkshiti	=	15.8 °C
Meðallágmarkshiti	=	9.6 °C
Úrkomumagn	=	59.8 mm
Hlutfall úrkomu af meðaltali 1931-60	=	91.0 %
Meðalvindhraði	=	3.2 m/s
Sólskinsstundir	=	248.3 klst

Dags	Meðalhiti (°C)	Hámark (°C)	Lágmark (°C)	Úrkoma (mm)	Úrkomutegund	Snjóþýpt (cm)	Snjóhula (0-4)	Sólskin(klst)	Meðalvindur (m/s)	Mesti vindur (m/s)	Hviða (m/s)
1.	13.0	18.2	8.6	0.0			0	1.5	2.1	4.6	8.8
2.	14.1	17.5	10.8	---			0	4.6	1.9	5.7	8.8
3.	17.5	23.0	12.5	25.6	ri		0	5.9	2.8	4.6	9.3
4.	14.4	22.2	11.0	0.5	ri		0	10.6	3.6	6.2	11.8
5.	13.7	18.1	10.5	---			0	9.1	3.1	6.2	8.2
6.	13.3	19.7	6.4	---			0	6.2	2.1	5.7	10.3
7.	13.7	18.4	10.5	1.4	ri		0	0.7	2.4	5.1	8.8
8.	12.8	18.2	7.8	0.0			0	8.4	2.6	5.7	7.7
9.	15.1	23.5	9.5	---			0	8.6	1.9	5.1	7.7
10.	12.0	19.2	10.3	---			0	4.0	1.8	4.1	5.7
11.	12.4	18.0	8.5	---			0	11.8	2.3	5.1	7.7
12.	11.5	16.6	9.6	0.0			0	8.8	2.0	4.6	6.7
13.	14.8	23.8	6.0	---			0	14.6	1.7	7.2	10.8
14.	13.3	21.7	9.0	---			0	12.2	2.7	6.2	8.2
15.	14.2	19.1	11.5	---			0	13.3	2.1	5.7	8.8
16.	11.1	16.4	6.0	---			0	11.8	2.7	6.2	8.8
17.	11.1	15.0	7.8	---			0	8.9	2.1	5.7	8.8
18.	9.4	14.6	5.6	---			0	11.9	3.3	8.2	12.4
19.	9.8	12.7	8.1	---			0	3.2	2.5	5.7	8.8
20.	9.2	12.6	7.4	0.1	ri		0	6.5	2.5	5.7	9.3
21.	9.2	13.5	5.5	---			0	0.2	1.5	4.6	6.2
22.	10.1	13.5	6.5	---			0	1.5	2.1	5.7	8.8
23.	11.5	17.0	6.4	4.3	ri		0	8.8	2.7	5.1	7.7
24.	11.5	16.7	7.4	---			0	11.4	2.9	5.7	8.8
25.	10.8	15.5	5.8	---			0	1.4	1.8	4.6	7.2
26.	11.0	14.5	9.0	4.5	ri		0	7.7	2.0	6.7	9.8
27.	10.3	13.4	9.0	0.0			0	0.4	1.8	5.1	7.2
28.	10.0	12.8	6.3	1.8	ri		0	0.2	1.6	3.6	8.8
29.	9.2	11.9	7.8	1.4	ri		0	6.2	3.0	5.7	9.3
30.	11.0	17.5	3.0	0.0			0	8.4	2.8	6.7	11.8
31.	15.6	20.0	11.2	0.1	ri		0	0.2	2.3	6.7	13.9



Meðalhiti	=	12.1 °C
Frávik frá meðaltali 1931-60	=	1.8 °C
Meðalhámarkshiti	=	17.3 °C
Meðallágmarkshiti	=	8.2 °C
Úrkomumagn	=	39.7 mm
Hlutfall úrkomu af meðaltali 1931-60	=	102.0 %
Meðalvindhraði	=	2.3 m/s
Sólskinsstundir	=	209.0 klst

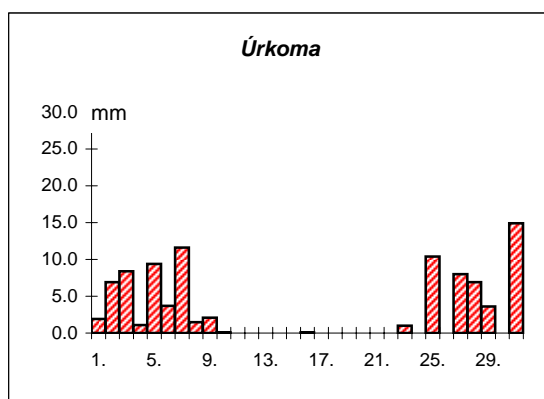
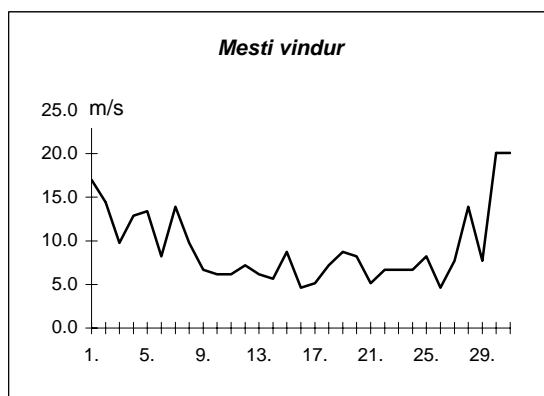
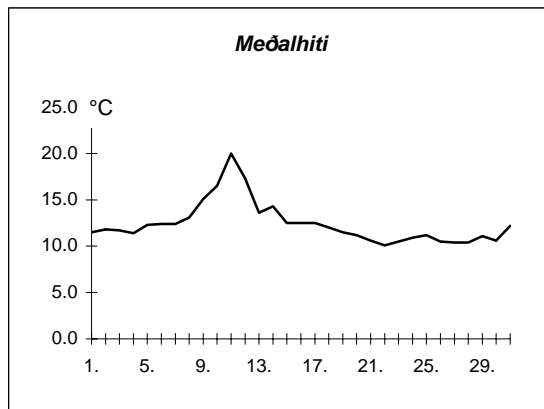
Dags	Meðalhiti (°C)	Hámark (°C)	Lágmark (°C)	Úrkoma (mm)	Úrkomutegund	Snjóþýpt (cm)	Snjóhúla (0-4)	Sólskin(klst)	Meðalvindur (m/s)	Mesti vindur (m/s)	Hviða (m/s)
1.	11.2	14.4	7.4	6.9	ri		0		4.1	7.2	9.3
2.	12.5	13.3	11.5	47.0	ri		0		3.0	7.7	10.8
3.	12.8	14.4	12.3	66.7	ri		0		4.1	8.2	12.9
4.	11.7	14.9	7.9	12.0	ri		0		2.6	5.7	8.8
5.	12.2	16.5	8.2	---			0		3.0	5.7	8.8
6.	12.7	15.1	9.5	---			0		6.0	13.4	19.0
7.	12.3	14.5	10.3	14.0	ri		0		3.9	6.7	8.8
8.	14.9	18.9	8.4	0.0			0		3.6	8.2	12.9
9.	19.1	22.9	14.6	---			0		4.4	11.3	13.9
10.	17.9	24.5	11.8	---			0		1.9	4.1	6.2
11.	16.9	24.2	10.9	---			0		2.0	4.6	6.2
12.	14.1	22.1	9.6	---			0		1.8	6.2	8.2
13.	11.2	14.9	9.3	0.0			0		1.5	4.1	5.7
14.	12.3	18.0	9.8	0.0			0		2.5	5.7	7.7
15.	10.8	15.7	7.3	---			0		2.2	8.2	10.8
16.	9.8	13.7	4.4	---			0		2.7	7.2	9.3
17.	10.9	14.9	8.4	---			0		2.6	6.7	8.8
18.	10.2	12.6	7.9	---			0		2.1	4.6	6.7
19.	11.2	14.6	6.5	---			0		4.9	10.3	14.4
20.	9.6	14.5	7.6	---			0		3.0	6.2	9.8
21.	9.7	13.9	4.0	0.5	ri		0		2.3	5.1	7.7
22.	9.9	13.6	4.9	---			0		2.0	4.6	6.7
23.	9.9	13.4	6.9	2.3	ri		0		1.8	4.1	6.2
24.	10.2	14.4	5.0	---			0		1.7	3.6	5.1
25.	9.6	13.7	6.7	11.4	ri		0		3.0	8.8	12.9
26.	9.8	14.3	4.6	35.7	ri		0		1.3	3.6	5.7
27.	9.4	14.0	7.4	1.7	sl		0		1.5	6.2	7.7
28.	9.9	11.6	8.0	17.2	ri		0		4.8	9.3	17.5
29.	11.1	14.5	8.7	4.6	ri		0		5.2	10.3	13.9
30.	8.5	13.0	5.4	---			0		1.5	5.1	7.7
31.	12.0	13.0	9.0	13.3	ri		0		6.5	10.3	13.4



Meðalhiti	=	11.8 °C
Meðalhámarkshiti	=	15.6 °C
Meðallágmarkshiti	=	8.2 °C
Úrkomumagn	=	233.3 mm
Meðalvindhraði	=	3.0 m/s

Útgefandi : **Veðurstofa Íslands**
 Heimilisfang : **Bústaðavegur 9**
150 Reykjavík

Dags	Meðalhiti (°C)	Hámark (°C)	Lágmark (°C)	Úrkoma (mm)	Úrkomutegund	Snjódýpt (cm)	Snjöhula (0-4)	Sólskin(klíst)	Meðalvindur (m/s)	Mesti vindur (m/s)	Hviða (m/s)
1.	11.5	13.9	9.3	1.9	ri		0		11.6	17.0	23.7
2.	11.8	14.0	10.3	6.9	ri		0		6.4	14.4	20.1
3.	11.7	13.0	10.7	8.4	ri		0		5.5	9.8	13.9
4.	11.4	14.1	8.6	1.1	ri		0		7.4	12.9	16.5
5.	12.3	14.0	11.2	9.4	ri		0		7.7	13.4	19.0
6.	12.4	14.5	11.3	3.7	ri		0		4.6	8.2	10.8
7.	12.4	15.9	10.2	11.6	ri		0		9.8	13.9	19.0
8.	13.1	16.7	10.6	1.5	ri		0		5.9	9.8	14.4
9.	15.1	17.8	11.4	2.1	ri		0		3.9	6.7	8.2
10.	16.5	21.6	13.1	0.1	ri		0		3.2	6.2	7.2
11.	20.0	25.0	14.4	---			0		4.1	6.2	7.7
12.	17.3	22.9	14.2	---			0		3.4	7.2	8.2
13.	13.6	19.3	10.5	---			0		4.1	6.2	9.3
14.	14.3	17.6	11.3	---			0		3.1	5.7	7.2
15.	12.5	17.2	9.5	---			0		4.7	8.8	13.4
16.	12.5	15.5	11.2	0.1	ri		0		2.6	4.6	7.7
17.	12.5	14.9	10.6	---			0		2.9	5.1	8.2
18.	12.0	15.1	8.5	---			0		4.2	7.2	9.8
19.	11.5	14.7	8.8	---			0		5.1	8.8	10.3
20.	11.2	14.8	8.3	---			0		4.7	8.2	10.3
21.	10.6	14.0	8.3	---			0		2.1	5.1	7.2
22.	10.1	13.5	5.4	0.0			0		4.0	6.7	9.3
23.	10.5	14.2	7.3	1.0	ri		0		3.7	6.7	9.3
24.	10.9	14.0	7.1	0.0			0		4.1	6.7	9.8
25.	11.2	13.4	9.3	10.4	ri		0		3.8	8.2	9.3
26.	10.5	13.7	7.5	0.0			0		2.0	4.6	6.2
27.	10.4	13.0	8.3	8.0	ri		0		3.2	7.7	10.8
28.	10.4	12.3	8.8	6.9	ri		0		9.2	13.9	17.5
29.	11.1	13.5	10.0	3.6	ri		0		4.7	7.7	10.3
30.	10.6	13.3	7.5	---			0		11.6	20.1	26.3
31.	12.2	14.1	10.1	14.9	ri		0		11.0	20.1	26.3



Meðalhiti	=	12.4 °C
Frávik frá meðaltali 1931-60	=	2.0 °C
Meðalhámarkshiti	=	15.5 °C
Meðallágmarkshiti	=	9.8 °C
Úrkomumagn	=	91.6 mm
Hlutfall úrkomu af meðaltali 1931-60	=	109.0 %
Meðalvindhraði	=	5.3 m/s