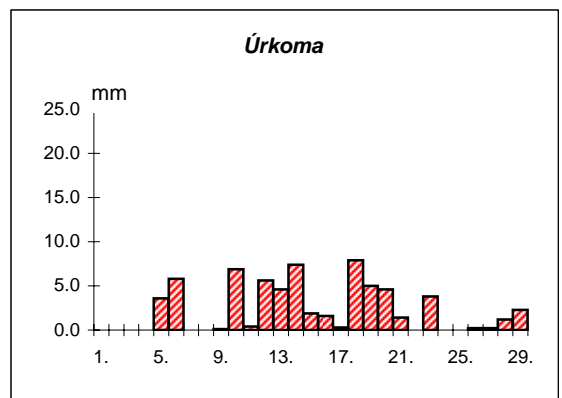
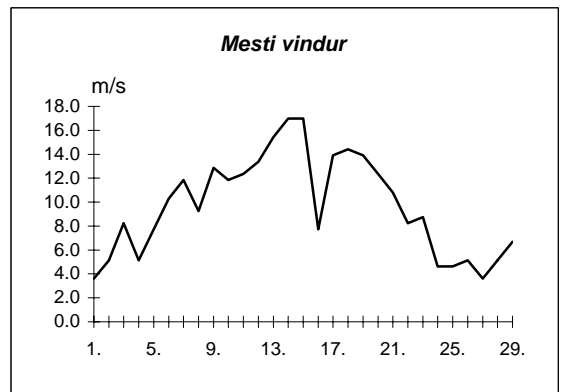
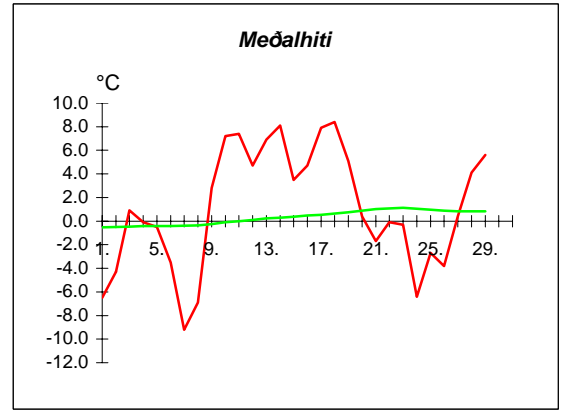
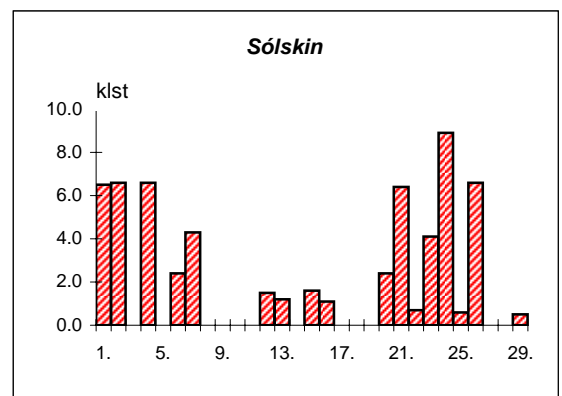


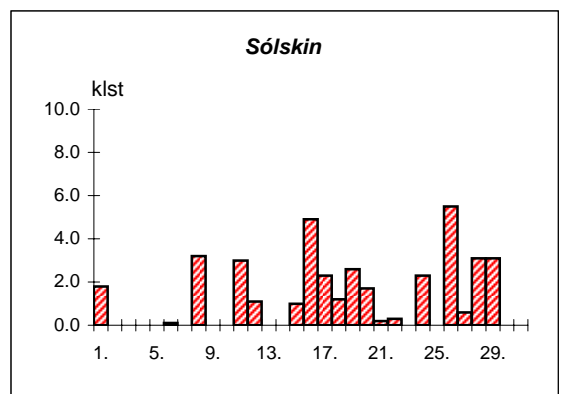
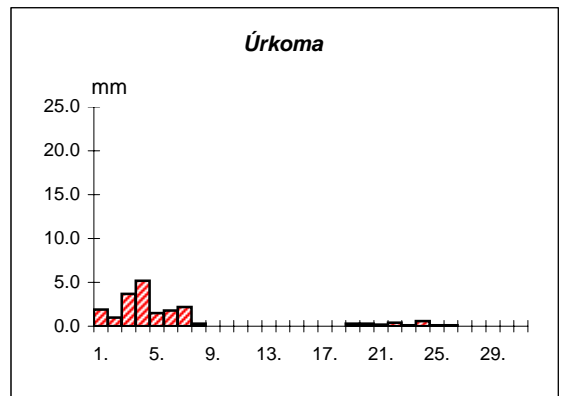
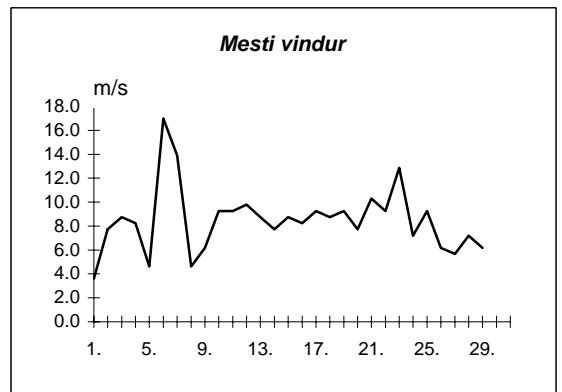
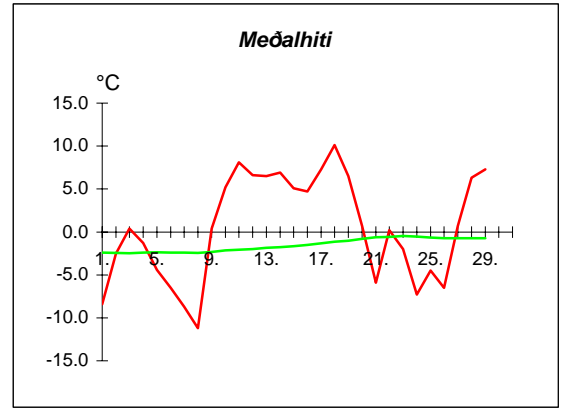
Dags	Meðalhiti (°C)	Hámark (°C)	Lágmark (°C)	Úrkoma (mm)	Úrkomutegund	Snjódýpt (cm)	Snjöhula (0-4)	Sólskin(klst)	Meðalvindur (m/s)	Mesti vindur (m/s)	Hviða (m/s)
1.	-6.5	-3.1	-10.2	---			0	6.5	1.5	3.6	6.2
2.	-4.3	-1.6	-9.1	---			0	6.6	2.2	5.1	8.2
3.	0.9	3.0	-3.3	---			0	0.0	4.0	8.2	12.9
4.	-0.1	1.5	-1.7	---			0	6.6	2.0	5.1	6.7
5.	-0.5	0.8	-1.6	3.6	sn	7	4	0.0	4.3	7.7	12.4
6.	-3.5	0.2	-5.4	5.8	sn	15	4	2.4	6.6	10.3	16.5
7.	-9.2	-5.0	-11.3	0.0		1	2	4.3	5.3	11.8	17.0
8.	-6.9	-5.2	-12.4	---		1	4	0.0	4.0	9.3	13.9
9.	2.8	6.0	-5.5	0.1	sl	0	2	0.0	7.7	12.9	19.6
10.	7.2	9.1	3.0	6.9	sl		0	0.0	5.9	11.8	14.9
11.	7.4	9.1	6.3	0.4	ri		0	0.0	6.3	12.4	17.0
12.	4.7	9.0	2.3	5.6	ri		0	1.5	5.1	13.4	20.1
13.	6.9	9.3	1.5	4.6	ri		0	1.2	7.8	15.4	23.2
14.	8.1	9.4	5.8	7.4	ri		0	0.0	11.5	17.0	25.7
15.	3.5	8.2	1.6	1.9	sl		0	1.6	4.7	17.0	26.3
16.	4.7	7.0	1.4	1.6	sl		0	1.1	4.9	7.7	12.4
17.	7.9	8.3	6.1	0.3	ri		0	0.0	9.9	13.9	22.1
18.	8.4	9.1	7.7	7.9	ri		0	0.0	10.1	14.4	20.6
19.	5.1	9.9	2.2	5.0	ri		0	0.0	6.6	13.9	20.6
20.	0.4	2.4	-1.4	4.6	sl		2	2.4	7.7	12.4	20.6
21.	-1.7	1.5	-3.7	1.4	sn	2	4	6.4	5.3	10.8	19.6
22.	-0.1	3.1	-7.4	0.0		2	0.7	4.1	8.2	13.4	13.4
23.	-0.3	5.6	-2.9	3.8	sl		0	4.1	5.1	8.8	13.9
24.	-6.4	-2.5	-8.5	---			0	8.9	1.5	4.6	19.6
25.	-2.7	2.7	-8.2	---			0	0.6	1.9	4.6	7.2
26.	-3.8	0.4	-6.4	0.2	sl		0	6.6	1.2	5.1	8.8
27.	0.4	3.0	-4.9	0.2	sn	0	2	0.0	2.3	3.6	5.7
28.	4.1	5.4	2.1	1.2	ri		0	0.0	3.0	5.1	8.2
29.	5.6	7.1	3.8	2.3	ri		0	0.5	3.8	6.7	9.8



Meðalhiti	=	1.1 °C
Frávik frá meðaltali 1931-60	=	1.2 °C
Meðalhámarkshiti	=	3.9 °C
Meðallágmarkshiti	=	-2.1 °C
Úrkomumagn	=	64.8 mm
Hlutfall úrkomu af meðaltali 1931-60	=	100.0 %
Meðalvindhraði	=	5.0 m/s
Sólskinsstundir	=	62.0 klst

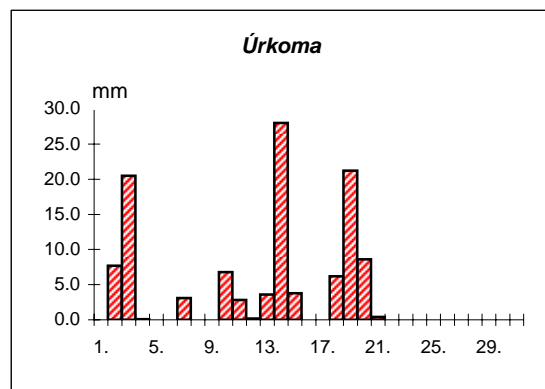
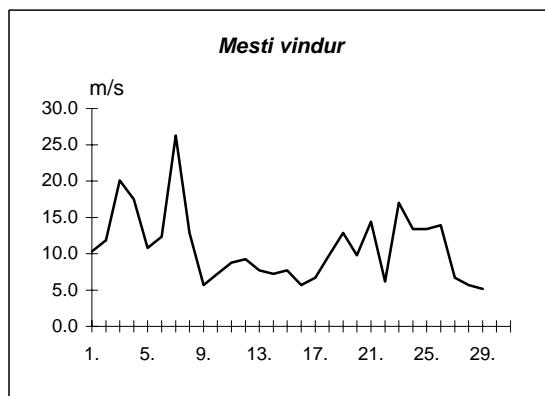
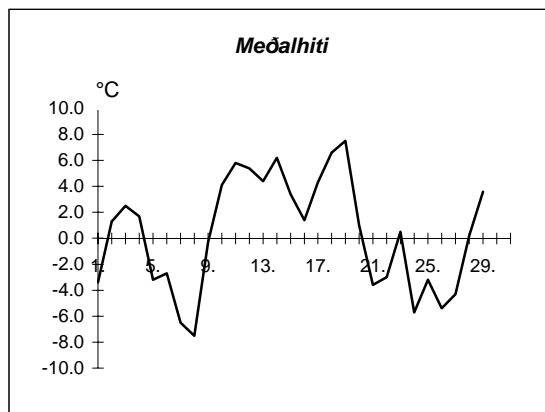


Dags	Meðalhiti (°C)	Hámark (°C)	Lágmark (°C)	Úrkoma (mm)	Úrkomutegund	Snjódýpt (cm)	Snjöhula (0-4)	Sólskin(klst)	Meðalvindur (m/s)	Mesti vindur (m/s)	Hviða (m/s)
1.	-8.4	-5.8	-10.2	1.9	sn	45	4	1.8	1.4	3.6	5.7
2.	-2.5	-0.5	-10.0	1.0	sn	46	4	0.0	2.7	7.7	11.8
3.	0.4	1.5	-1.0	3.7	sn	46	4	0.0	5.2	8.8	12.9
4.	-1.3	-0.2	-1.3	5.2	sn	52	4	0.0	3.6	8.2	11.8
5.	-4.4	-0.6	-5.6	1.5	sn	54	4	0.0	1.7	4.6	8.2
6.	-6.5	-5.0	-8.6	1.8	sn	55	4	0.1	3.8	17.0	26.8
7.	-8.7	-4.0	-9.2	2.2	sn	55	4	0.0	5.9	13.9	19.6
8.	-11.2	-8.2	-14.2	0.3	sn	55	4	3.2	2.8	4.6	7.7
9.	0.4	3.4	-10.5	---		55	4	0.0	3.3	6.2	9.8
10.	5.2	10.0	-1.5	0.0		54	4	0.0	3.9	9.3	17.0
11.	8.1	12.0	6.8	0.0		40	4	3.0	4.6	9.3	16.5
12.	6.6	9.4	6.5	---		30	4	1.1	4.6	9.8	17.5
13.	6.5	13.1	1.7	0.0		25	4	0.0	4.4	8.8	16.0
14.	6.9	9.3	3.5	0.0		22	4	0.0	4.1	7.7	14.9
15.	5.1	9.0	3.2	---		22	4	1.0	4.0	8.8	17.5
16.	4.7	7.5	1.0	---		22	2	4.9	4.1	8.2	12.4
17.	7.3	8.0	5.1	---		21	2	2.3	6.1	9.3	17.5
18.	10.1	12.3	6.8	---		15	2	1.2	5.7	8.8	16.5
19.	6.5	14.5	1.9	0.3	ri		2	2.6	4.4	9.3	19.0
20.	0.7	10.4	0.0	0.3	ri		2	1.7	4.2	7.7	16.0
21.	-5.9	1.5	-7.9	0.2	sn		2	0.2	5.4	10.3	17.0
22.	0.2	5.5	-10.2	0.4	sn		2	0.3	4.0	9.3	18.5
23.	-2.0	9.1	-7.0	0.1	sl		2	0.0	8.9	12.9	18.5
24.	-7.3	-5.8	-8.6	0.6	sn		2	2.3	4.1	7.2	12.9
25.	-4.5	-0.4	-9.2	0.1	sn		2	0.0	4.5	9.3	15.4
26.	-6.5	-3.8	-7.5	0.1	sn		2	5.5	2.7	6.2	10.8
27.	0.7	3.5	-7.8	0.0			2	0.6	2.2	5.7	10.8
28.	6.3	9.0	2.2	---			2	3.1	3.6	7.2	15.4
29.	7.3	9.5	5.2	---			2	3.1	4.3	6.2	11.8



Meðalhiti	=	0.5 °C
Frávik frá meðaltali 1931-60	=	2.1 °C
Meðalhámarkshiti	=	4.3 °C
Meðallágmarkshiti	=	-3.0 °C
Úrkomumagn	=	19.7 mm
Hlutfall úrkomu af meðaltali 1931-60	=	47.0 %
Meðalvindhraði	=	4.1 m/s
Sólskinsstundir	=	38.0 klst

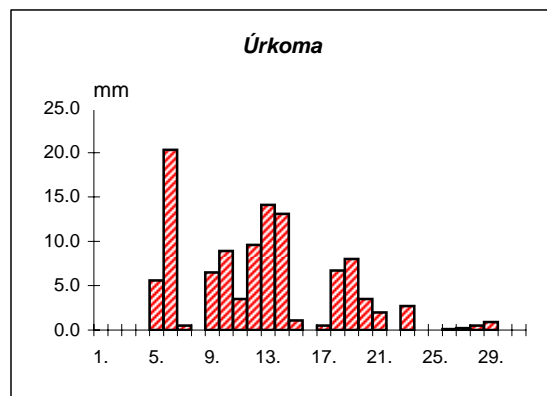
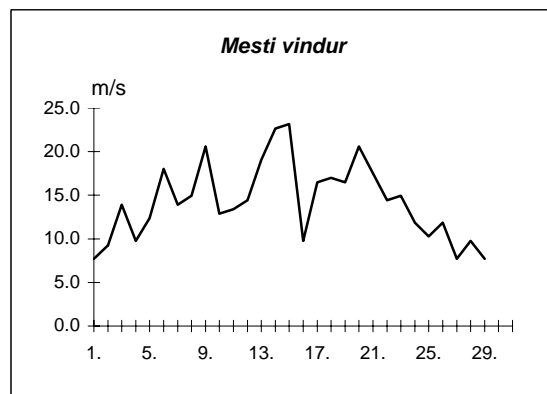
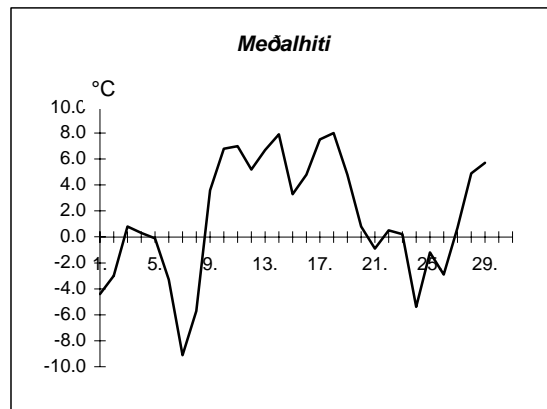
Dags	Meðalhiti (°C)	Hámark (°C)	Lágmark (°C)	Úrkoma (mm)	Úrkomutegund	Snjódýpt (cm)	Snjóhula (0-4)	Sólskin(klst)	Meðalvindur (m/s)	Mesti vindur (m/s)	Hviða (m/s)
1.	-3.4	-0.5	-9.1	---			0		4.0	10.3	12.4
2.	1.3	2.4	-3.3	7.7	sl	8	4		5.6	11.8	19.6
3.	2.5	4.7	0.3	20.5	sl	6	4		14.1	20.1	31.4
4.	1.7	5.3	0.9	0.1	sl	5	4		9.5	17.5	26.3
5.	-3.2	1.7	-4.2	---		4	4		6.6	10.8	13.4
6.	-2.7	-0.4	-3.5	---		3	4		5.6	12.4	19.0
7.	-6.5	-2.8	-7.1	3.1	sn	3	4		14.7	26.3	38.6
8.	-7.5	-5.1	-9.6	---		3	4		3.6	12.9	19.0
9.	-0.3	1.4	-9.2	---		3	4		2.8	5.7	7.7
10.	4.1	5.6	1.1	6.8	ri		0		3.0	7.2	8.8
11.	5.8	7.2	4.4	2.8	ri		0		3.3	8.8	13.9
12.	5.4	7.1	4.3	0.2	ri		0		4.8	9.3	13.9
13.	4.4	7.7	0.0	3.6	ri		0		3.6	7.7	13.4
14.	6.2	7.5	5.2	28.0	ri		0		2.7	7.2	9.3
15.	3.4	7.2	2.4	3.8	ri		0		2.1	7.7	10.8
16.	1.4	3.9	-1.7	---			0		1.8	5.7	6.2
17.	4.3	7.5	0.0	---			0		3.6	6.7	9.3
18.	6.6	7.0	4.5	6.2	ri		0		7.2	9.8	13.4
19.	7.5	8.5	6.4	21.2	ri		0		8.4	12.9	17.5
20.	1.0	8.2	-0.1	8.6	ri		0		4.3	9.8	15.4
21.	-3.6	1.5	-6.2	0.4	sn	2	2		6.6	14.4	19.0
22.	-3.0	-1.2	-8.4	---		1	2		2.5	6.2	8.2
23.	0.5	9.9	-3.7	---			0		9.0	17.0	25.2
24.	-5.7	-3.6	-8.0	---			0		7.9	13.4	19.0
25.	-3.2	1.7	-6.0	---			0		5.2	13.4	20.1
26.	-5.4	-1.6	-6.5	---			0		7.2	13.9	20.1
27.	-4.3	-1.2	-7.6	---			0		2.2	6.7	6.7
28.	0.2	6.4	-4.6	---			0		2.0	5.7	7.2
29.	3.6	5.2	-0.6	---			0		2.5	5.1	6.7



Meðalhiti	=	0.4 °C
Meðalhámarkshiti	=	3.5 °C
Meðallágmarkshiti	=	-2.4 °C
Úrkomumagn	=	113.0 mm
Meðalvindhraði	=	5.4 m/s

Útgefandi : **Veðurstofa Íslands**
 Heimilisfang : **Bústaðavegur 9**
150 Reykjavík

Dags	Meðalhiti (°C)	Hámark (°C)	Lágmark (°C)	Úrkoma (mm)	Úrkomutegund	Snjódýpt (cm)	Snjöhula (0-4)	Sólskin(klíst)	Meðalvindur (m/s)	Mesti vindur (m/s)	Hviða (m/s)
1.	-4.4	-1.8	-8.9	---			0		4.0	7.7	10.8
2.	-3.0	-1.0	-7.5	---			0		4.9	9.3	12.4
3.	0.8	2.4	-2.7	---			0		9.7	13.9	19.0
4.	0.3	2.0	-1.5	---			0		5.7	9.8	13.4
5.	-0.1	1.4	-1.3	5.6	sn	8	4		8.4	12.4	17.0
6.	-3.3	1.6	-4.8	20.3	sn	17	4		10.1	18.0	22.7
7.	-9.1	-4.0	-11.7	0.5	sn	15	4		8.0	13.9	17.0
8.	-5.7	-2.8	-12.5	0.0		17	4		6.0	14.9	18.5
9.	3.6	4.7	-8.8	6.5	sl	12	2		12.5	20.6	26.8
10.	6.8	8.9	4.5	8.9	ri		2		8.4	12.9	17.5
11.	7.0	9.0	5.9	3.5	ri		0		8.4	13.4	17.0
12.	5.2	10.6	3.7	9.6	ri		0		7.3	14.4	21.1
13.	6.7	9.2	0.4	14.1	ri		0		10.7	19.0	26.3
14.	7.9	9.1	5.4	13.1	ri		0		14.6	22.7	30.4
15.	3.3	8.5	-1.8	1.1	sl		0		6.7	23.2	30.9
16.	4.8	7.0	1.3	0.0			0		6.8	9.8	14.9
17.	7.5	9.6	3.1	0.5	ri		0		12.4	16.5	22.7
18.	8.0	9.5	4.9	6.7	ri		0		12.1	17.0	22.7
19.	4.8	9.4	1.9	8.0	ri		0		10.6	16.5	22.1
20.	0.8	3.8	-1.3	3.5	sl	0	2		13.8	20.6	25.7
21.	-0.9	4.6	-2.1	2.0	sl	1	2		8.0	17.5	23.2
22.	0.5	4.2	-5.5	---			2		7.7	14.4	18.0
23.	0.2	6.5	-2.2	2.7	sl		0		8.8	14.9	19.0
24.	-5.4	-0.7	-6.7	---			0		7.5	11.8	16.5
25.	-1.2	4.1	-6.8	---			0		4.6	10.3	14.4
26.	-2.9	2.2	-4.6	0.1	ri		0		6.1	11.8	16.0
27.	0.7	1.7	-4.0	0.2	sl	0	2		5.4	7.7	10.3
28.	4.9	6.4	1.4	0.5	ri		0		6.5	9.8	12.9
29.	5.7	7.5	4.1	0.9	ri		0		5.8	7.7	11.3



Meðalhiti	=	1.5 °C
Frávik frá meðaltali 1931-60	=	1.2 °C
Meðalhámarkshiti	=	4.6 °C
Meðallágmarkshiti	=	-2.0 °C
Úrkomumagn	=	108.3 mm
Hlutfall úrkomu af meðaltali 1931-60	=	139.0 %
Meðalvindhraði	=	8.3 m/s