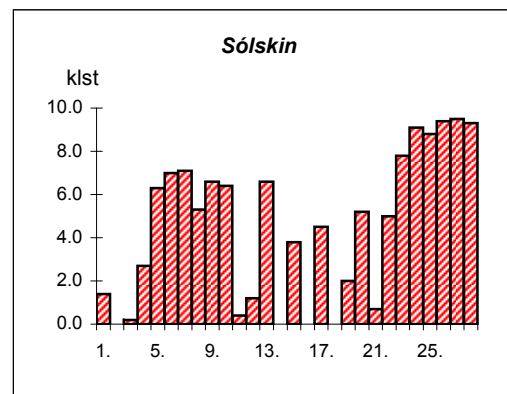
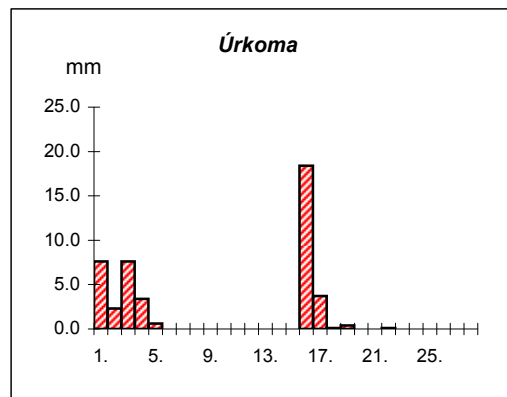
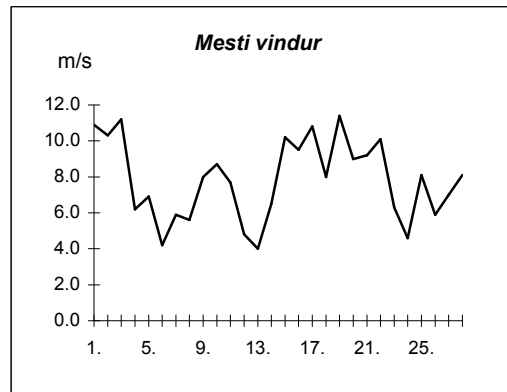
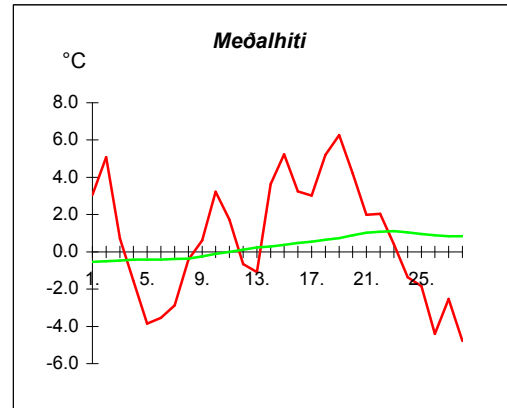


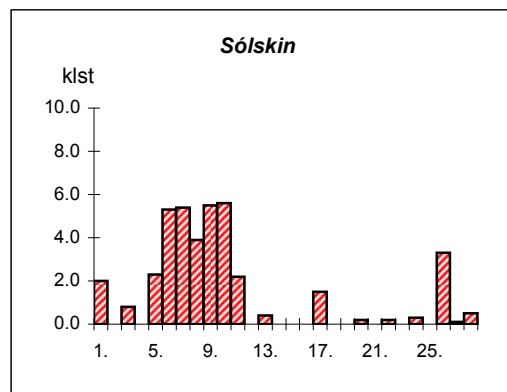
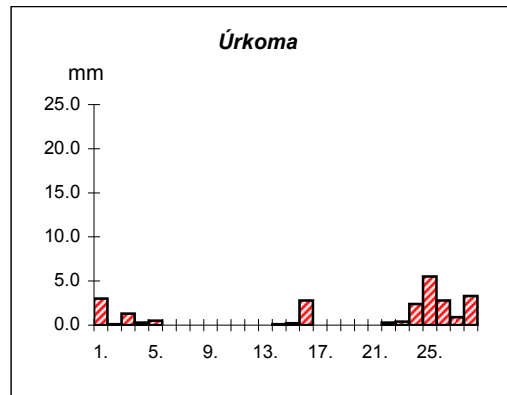
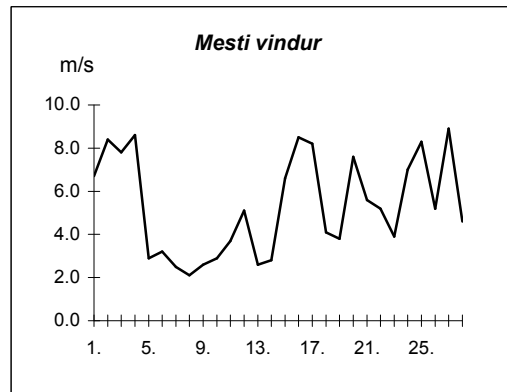
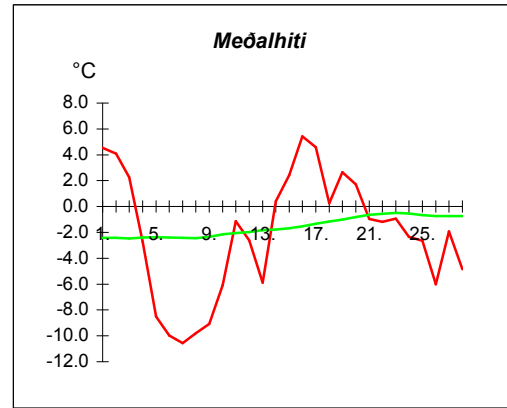
Reykjavík febrúar 2007

Dags	Meðalhiti (°C)	Hámark (°C)	Lágmark (°C)	Úrkoma (mm)	Úrkomutegund	Snjódýpt (cm)	Snjöhula (0-4)	Sólskin(klst)	Meðalvindur (m/s)	Mesti vindur (m/s)	Hviða (m/s)
1.	3.1	6.2	1.6	7.6	sl			1.4	5.5	10.9	19.3
2.	5.1	8.8	1.8	2.3	ri			0.0	6.2	10.3	19.6
3.	0.7	8.8	-0.2	7.6	sl	3	4	0.2	5.2	11.2	17.7
4.	-1.6	1.0	-2.6	3.4	sn	6	4	2.7	2.1	6.2	9.8
5.	-3.9	-2.0	-7.0	0.6	sn	7	4	6.3	3.8	6.9	10.5
6.	-3.6	-1.5	-4.7			6	4	7.0	3.2	4.2	6.4
7.	-2.9	-0.5	-6.0			6	4	7.1	3.4	5.9	9.5
8.	-0.4	1.3	-2.7			5	4	5.3	3.3	5.6	8.3
9.	0.6	1.9	-1.7			6	2	6.6	4.4	8.0	13.4
10.	3.2	4.3	1.2			5	2	6.4	6.9	8.7	14.7
11.	1.7	3.8	1.2				2	0.4	3.1	7.7	12.9
12.	-0.7	2.0	-0.8				2	1.2	3.1	4.8	7.9
13.	-1.1	2.6	-4.8				2	6.6	2.6	4.0	7.7
14.	3.6	4.7	0.2	0.0	sl		2	0.0	4.1	6.5	11.3
15.	5.2	7.6	2.8					3.8	5.6	10.2	18.6
16.	3.3	6.3	1.9	18.4	ri			0.0	4.8	9.5	14.7
17.	3.0	5.0	1.8	3.7	ri			4.5	4.8	10.8	16.0
18.	5.2	7.2	2.6	0.1	ri			0.0	5.0	8.0	12.3
19.	6.3	7.5	4.7	0.4	ri			2.0	8.1	11.4	19.5
20.	4.2	7.8	3.6					5.2	6.3	9.0	14.1
21.	2.0	4.5	0.5					0.7	5.5	9.2	15.4
22.	2.0	3.8	1.2	0.1	sn			5.0	5.1	10.1	17.0
23.	0.4	3.2	-1.1					7.8	2.8	6.3	10.5
24.	-1.4	1.4	-3.4					9.1	2.4	4.6	8.0
25.	-1.9	0.8	-3.3					8.8	3.6	8.1	13.2
26.	-4.4	0.3	-7.7					9.4	1.9	5.9	8.7
27.	-2.5	1.5	-6.5					9.5	3.3	7.0	11.6
28.	-4.8	-0.4	-7.6					9.3	3.0	8.1	12.1



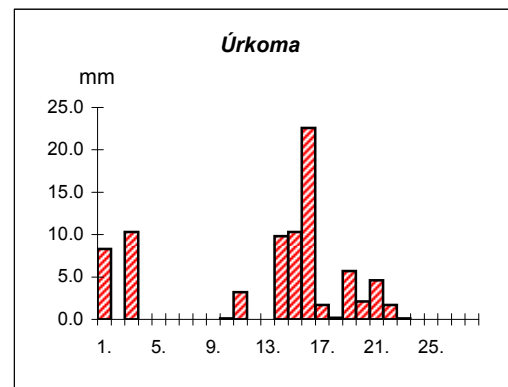
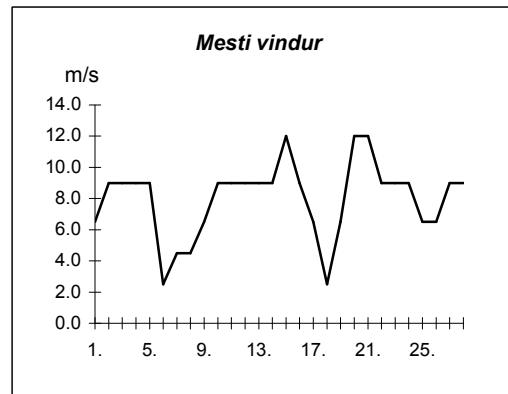
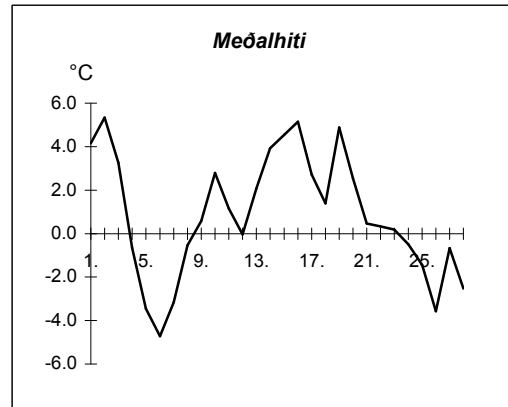
Meðalhiti	=	0.7 °C
Frávik frá meðaltali 1961-90	=	0.3 °C
Meðalhámarkshiti	=	3.5 °C
Meðallágmarkshiti	=	-1.3 °C
Úrkomumagn	=	44.2 mm
Hlutfall úrkomu af meðaltali 1961-90	=	61.4 %
Meðalvindhraði	=	4.3 m/s
Sólskinsstundir	=	126.3 klst

Dags	Meðalhiti (°C)	Hámark (°C)	Lágmark (°C)	Úrkoma (mm)	Úrkomutegund	Snjódýpt (cm)	Snjöhula (0-4)	Sólskin(klst)	Meðalvindur (m/s)	Mesti vindur (m/s)	Hviða (m/s)
1.	4.5	8.8	3.6	3.0	ri		0	2.0	3.8	6.7	11.0
2.	4.1	5.7	2.8	0.1	sl		0	0.0	3.9	8.4	17.4
3.	2.3	10.0	1.4	1.3	sl		0	0.8	3.1	7.8	13.4
4.	-2.7	2.0	-3.8	0.3	sn		0	0.0	4.3	8.6	13.4
5.	-8.5	-3.8	-9.4	0.5	sn	1	2	2.3	1.6	2.9	4.6
6.	-10.0	-5.0	-12.3				0	5.3	0.7	3.2	4.7
7.	-10.6	-6.7	-13.9				0	5.4	1.2	2.5	4.8
8.	-9.8	-6.2	-12.5				0	3.9	1.0	2.1	3.5
9.	-9.1	-5.1	-11.2				0	5.5	0.9	2.6	4.5
10.	-6.1	-2.1	-8.8				0	5.6	1.1	2.9	4.7
11.	-1.1	0.2	-5.6				0	2.2	1.3	3.7	7.2
12.	-2.6	-0.2	-3.5				0	0.0	1.6	5.1	10.1
13.	-5.9	-0.5	-9.0				0	0.4	1.0	2.6	4.3
14.	0.4	3.0	-4.2	0.1	sl		0	0.0	1.4	2.8	5.4
15.	2.4	5.2	1.2	0.2	ri		0	0.0	2.0	6.6	11.1
16.	5.4	7.3	0.0	2.8	ri		0	0.0	4.4	8.5	16.6
17.	4.6	8.1	3.3	0.0	ri		0	1.5	3.9	8.2	16.0
18.	0.3	6.6	-2.1				0	0.0	1.3	4.1	6.7
19.	2.6	5.7	-1.7	0.0	ri		0	0.0	1.6	3.8	7.1
20.	1.7	6.1	1.6				0	0.2	3.5	7.6	12.6
21.	-1.0	2.1	-1.6	0.0	sl		0	0.0	2.9	5.6	11.3
22.	-1.2	0.2	-2.8	0.3	sn		0	0.2	1.8	5.2	11.4
23.	-0.9	0.5	-1.1	0.4	sn		0	0.0	2.3	3.9	8.8
24.	-2.4	0.7	-3.0	2.4	sn	9	4	0.3	2.5	7.0	10.2
25.	-2.6	-1.3	-3.4	5.5	sn	11	4	0.0	4.2	8.3	12.6
26.	-6.0	-2.5	-8.9	2.8		10	4	3.3	3.0	5.2	9.0
27.	-1.9	-0.8	-7.4	0.9	sn	15	4	0.1	3.5	8.9	12.0
28.	-4.9	-0.5	-5.4	3.3	sn	18	4	0.5	1.4	4.6	6.6



Meðalhiti	=	-2.1 °C
Frávik frá meðaltali 1961-90	=	-0.6 °C
Meðalhámarkshiti	=	1.3 °C
Meðallágmarkshiti	=	-4.2 °C
Úrkomumagn	=	23.9 mm
Hlutfall úrkomu af meðaltali 1961-90	=	56.0 %
Meðalvindhraði	=	2.3 m/s
Sólskinsstundir	=	39.5 klst

Dags	Meðalhiti (°C)	Hámark (°C)	Lágmark (°C)	Úrkoma (mm)	Úrkomutegund	Snjódýpt (cm)	Snjöhula (0-4)	Sólskin(klst)	Meðalvindur (m/s)	Mesti vindur (m/s)
1.	4.2	5.9	1.6	8.3	ri		2		3.6	6.5
2.	5.3	5.8	0.8		ri		2		3.9	9.0
3.	3.3	8.0	2.6	10.3	ri		2		6.4	9.0
4.	-0.7	3.0	-1.5				2		5.4	9.0
5.	-3.4	-0.8	-4.5				2		4.4	9.0
6.	-4.7	-2.6	-5.3				2		1.7	2.5
7.	-3.2	-0.7	-5.7				2		1.4	4.5
8.	-0.5	2.3	-4.2				0		1.5	4.5
9.	0.6	3.0	-3.4				0		4.1	6.5
10.	2.8	4.0	1.8	0.1	ri		0		6.1	9.0
11.	1.2	3.0	0.8	3.2	sl		0		5.8	9.0
12.	0.0	1.7	-1.1	0.0	sn		2		4.1	9.0
13.	2.1	3.5	-0.2				0		3.4	9.0
14.	3.9	5.2	0.8	9.8	sl		0		5.4	9.0
15.	4.5	5.9	2.8	10.3	ri		0		6.8	12.0
16.	5.2	7.2	2.8	22.6	ri		0		5.4	9.0
17.	2.7	5.2	2.3	1.7	ri		0		3.0	6.5
18.	1.4	3.1	-0.6	0.2	sl		0		1.4	2.5
19.	4.9	6.7	1.5	5.7	ri		0		5.3	6.5
20.	2.5	5.2	1.6	2.1	sl		0		10.5	12.0
21.	0.5	2.4	-0.2	4.6	sn	2	2		9.4	12.0
22.	0.3	1.7	-0.4	1.7	sn	2	2		6.6	9.0
23.	0.2	1.5	0.0	0.1	sn		2		7.8	9.0
24.	-0.5	1.3	-1.5				2		8.4	9.0
25.	-1.4	1.2	-2.3				0		5.8	6.5
26.	-3.6	-0.3	-4.7				0		3.9	6.5
27.	-0.7	1.5	-6.0				0		6.7	9.0
28.	-2.5	1.0	-4.4				0		6.2	9.0



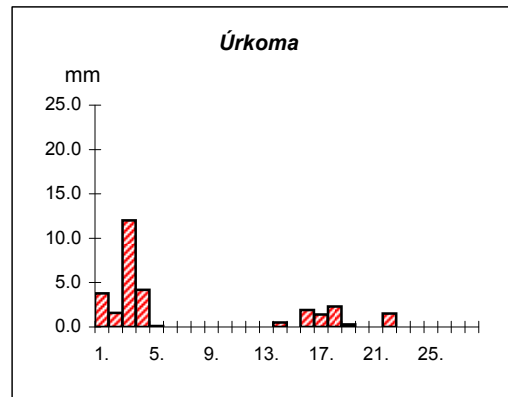
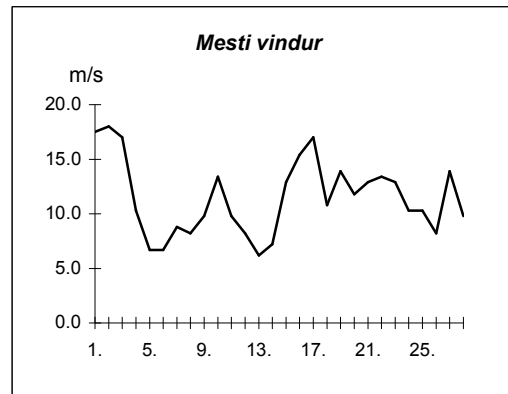
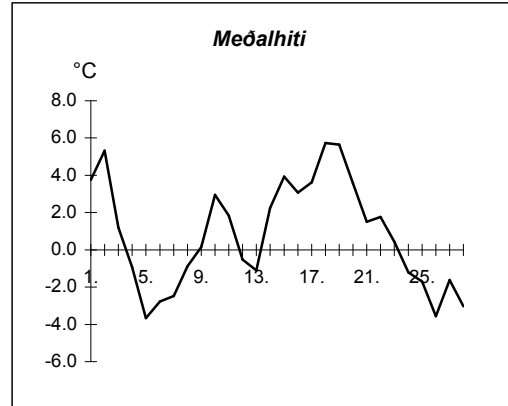
Meðalhiti	=	0.9 °C
Meðalhámarkshiti	=	3.0 °C
Meðallágmarkshiti	=	-1.0 °C
Úrkomumagn	=	80.8 mm
Meðalvindhraði	=	5.1 m/s

Útgefandi : Veðurstofa Íslands

Heimilisfang : Bústaðavegur 9

150 Reykjavík

Dags	Meðalhiti (°C)	Hámark (°C)	Lágmark (°C)	Úrkoma (mm)	Úrkomutegund	Snjódýpt (cm)	Snjöhula (0-4)	Sólskin(klst)	Meðalvindur (m/s)	Mesti vindur (m/s)	Hviða (m/s)
1.	3.8	7.0	2.5	3.8	ri		0		8.5	17.5	22.7
2.	5.3	8.5	3.0	1.6	ri		0		11.8	18.0	23.2
3.	1.2	9.0	0.1	12.0	sl	1	2		10.2	17.0	21.6
4.	-0.9	2.4	-1.4	4.2	sn	5	4		4.4	10.3	13.9
5.	-3.7	-0.8	-6.5	0.1	sn	5	4		4.2	6.7	9.3
6.	-2.8	0.1	-3.5			4	4		4.0	6.7	8.8
7.	-2.5	0.1	-4.6			4	4		5.7	8.8	11.3
8.	-0.9	1.0	-3.4			4	4		5.5	8.2	9.8
9.	0.2	2.1	-1.6			3	4		6.2	9.8	12.9
10.	3.0	5.8	0.9			3	4		9.4	13.4	19.6
11.	1.8	4.0	1.3			3	2		6.5	9.8	12.9
12.	-0.5	3.3	-0.9				2		3.3	8.2	10.8
13.	-1.1	3.3	-4.4				2		4.0	6.2	7.7
14.	2.2	3.6	-0.6	0.5	ri		2		4.5	7.2	9.8
15.	3.9	5.7	2.4				2		8.8	12.9	19.0
16.	3.1	5.8	2.2	1.9	ri		0		9.2	15.4	20.6
17.	3.6	5.2	2.3	1.4	sl		0		7.5	17.0	23.7
18.	5.7	7.5	3.3	2.3	ri		0		7.1	10.8	16.5
19.	5.7	8.0	4.4	0.3	ri		0		8.3	13.9	18.5
20.	3.6	7.0	3.4	0.0	ri		0		8.5	11.8	16.0
21.	1.5	3.8	0.3				0		9.0	12.9	18.0
22.	1.8	4.2	0.7	1.5	sn		2		7.0	13.4	17.5
23.	0.4	2.2	-0.3				2		5.5	12.9	14.9
24.	-1.2	2.2	-1.8				0		6.1	10.3	13.9
25.	-1.7	0.5	-1.9				0		6.8	10.3	14.4
26.	-3.6	0.5	-6.3			0	2		5.0	8.2	11.3
27.	-1.6	1.2	-6.2			0	2		8.3	13.9	18.5
28.	-3.0	0.5	-4.2			0	2		7.3	9.8	12.4



Meðalhiti	=	0.8 °C
Frávik frá meðaltali 1961-90	=	0.2 °C
Meðalhámarkshiti	=	3.7 °C
Meðallágmarkshiti	=	-0.7 °C
Úrkomumagn	=	29.6 mm
Hlutfall úrkomu af meðaltali 1961-90	=	29.0 %
Meðalvindhraði	=	6.9 m/s