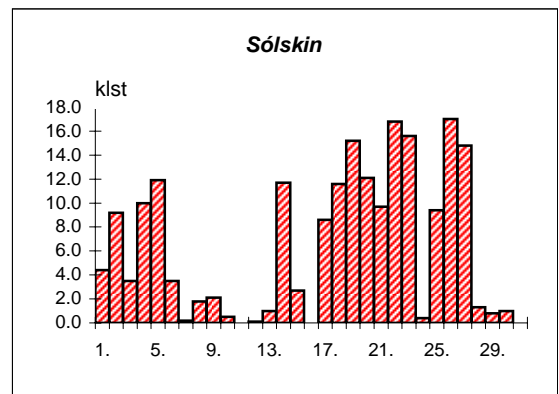
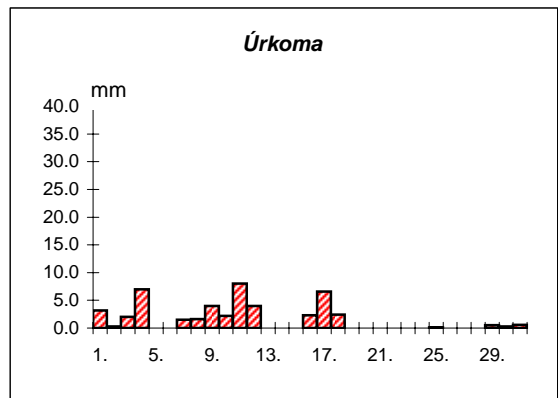
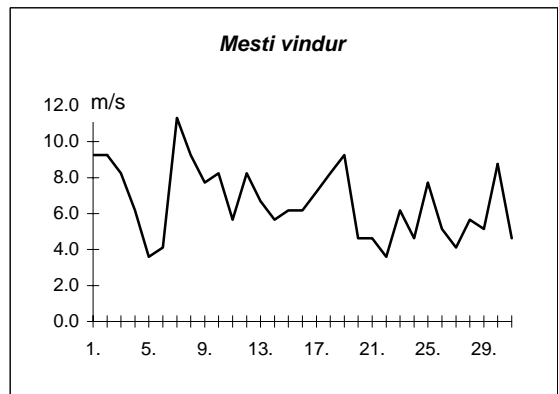
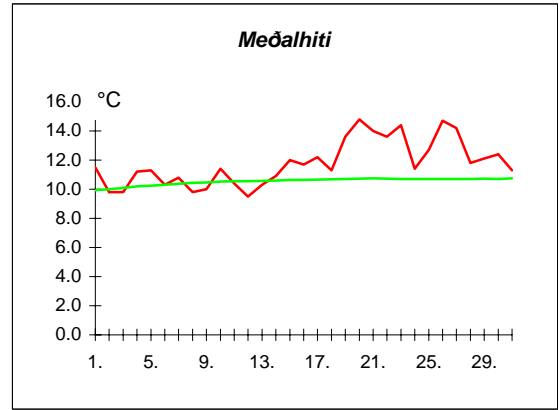
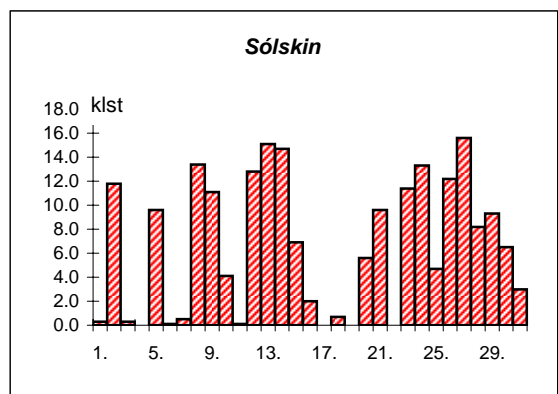
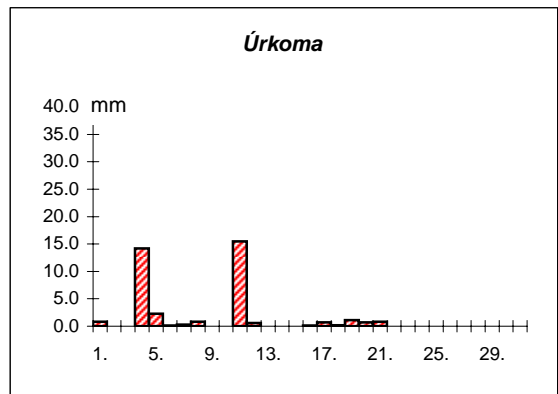
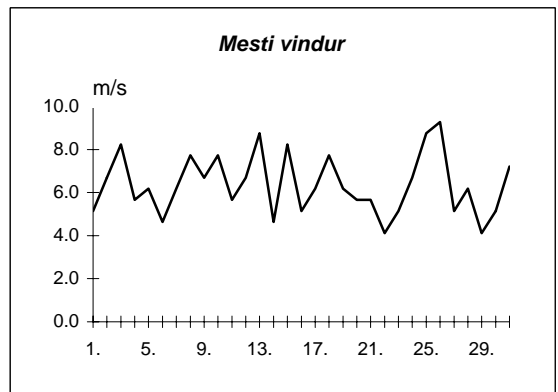
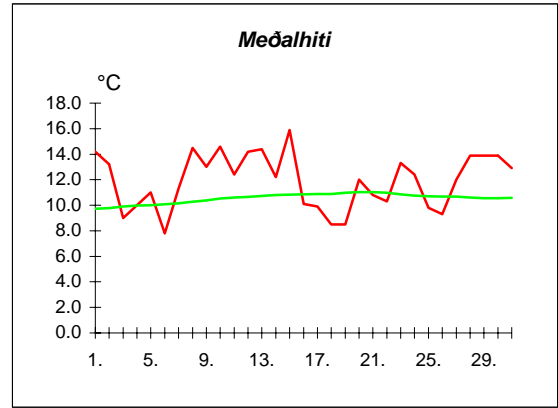


Dags	Meðalhiti (°C)	Hámark (°C)	Lágmark (°C)	Úrkoma (mm)	Úrkomutegund	Snjódýpt (cm)	Snjöhula (0-4)	Sólskin(klst)	Meðalvindur (m/s)	Mesti vindur (m/s)	Hviða (m/s)
1.	11.5	14.2	10.5	3.2	ri		0	4.4	5.2	9.3	12.9
2.	9.8	13.2	7.5	0.3	ri		0	9.2	4.9	9.3	13.4
3.	9.8	13.9	5.8	2.0	ri		0	3.5	4.6	8.2	14.4
4.	11.2	14.5	7.7	7.0	ri		0	10.0	3.0	6.2	10.3
5.	11.3	14.0	8.7	0.0			0	11.9	2.3	3.6	5.7
6.	10.3	13.4	9.1	---			0	3.5	2.1	4.1	6.2
7.	10.8	12.2	8.6	1.5	ri		0	0.2	4.9	11.3	16.0
8.	9.8	12.7	8.7	1.6	ri		0	1.8	6.6	9.3	14.4
9.	10.0	12.3	7.1	4.0	ri		0	2.1	4.4	7.7	11.3
10.	11.4	13.4	9.0	2.2	ri		0	0.5	5.1	8.2	13.4
11.	10.4	12.8	8.8	8.0	ri		0	0.0	3.7	5.7	8.2
12.	9.5	12.0	7.9	4.0	ri		0	0.1	4.8	8.2	13.4
13.	10.3	12.7	8.5	0.0			0	1.0	3.7	6.7	11.3
14.	10.9	13.8	7.8	0.0			0	11.7	1.8	5.7	7.7
15.	12.0	15.5	9.0	---			0	2.7	3.6	6.2	9.8
16.	11.7	13.5	10.1	2.3	ri		0	0.0	3.8	6.2	9.3
17.	12.2	16.0	8.8	6.6	ri		0	8.6	3.7	7.2	12.9
18.	11.3	15.8	8.7	2.4	ri		0	11.6	4.9	8.2	14.9
19.	13.6	17.5	7.8	---			0	15.2	2.3	9.3	16.5
20.	14.8	19.0	11.9	---			0	12.1	3.0	4.6	6.7
21.	14.0	18.4	10.3	0.0			0	9.7	2.9	4.6	7.2
22.	13.6	18.8	9.7	---			0	16.8	2.0	3.6	5.1
23.	14.4	18.8	9.7	---			0	15.6	2.8	6.2	10.3
24.	11.4	17.7	10.6	0.0			0	0.4	3.0	4.6	6.7
25.	12.7	14.1	10.2	0.1	ri		0	9.4	4.5	7.7	11.8
26.	14.7	18.1	9.8	---			0	17.0	2.3	5.1	7.7
27.	14.2	19.4	10.6	---			0	14.8	2.3	4.1	6.7
28.	11.8	15.8	10.1	0.0			0	1.3	3.3	5.7	8.8
29.	12.1	13.9	10.2	0.5	ri		0	0.8	2.5	5.1	7.2
30.	12.4	13.4	10.5	0.3	ri		0	1.0	5.1	8.8	14.9
31.	11.3	13.6	10.3	0.6	ri		0	0.0	2.4	4.6	8.2



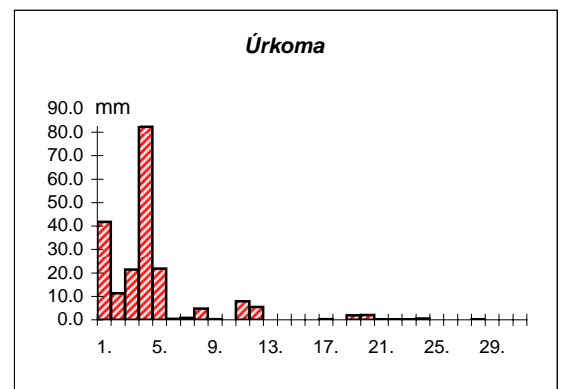
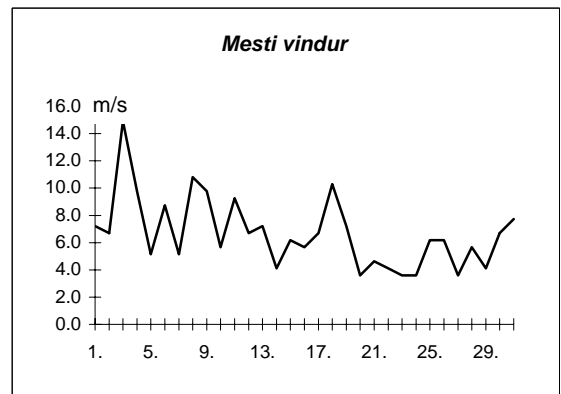
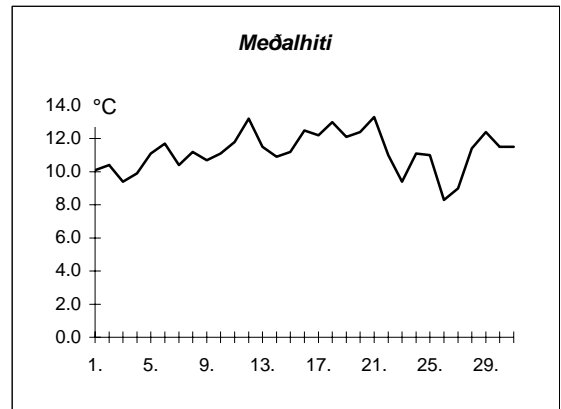
Meðalhiti	=	11.8 °C
Frávik frá meðaltali 1931-60	=	0.6 °C
Meðalhámarkshiti	=	15.0 °C
Meðallágmarkshiti	=	9.2 °C
Úrkomumagn	=	46.6 mm
Hlutfall úrkomu af meðaltali 1931-60	=	97.0 %
Meðalvindhraði	=	3.6 m/s
Sólskinsstundir	=	196.9 klst

Dags	Meðalhiti (°C)	Hámark (°C)	Lágmark (°C)	Úrkoma (mm)	Úrkomutegund	Snjódýpt (cm)	Snjöhula (0-4)	Sólskin(klst)	Meðalvindur (m/s)	Mesti vindur (m/s)	Hviða (m/s)
1.	14.2	17.5	13.0	0.8	ri		0	0.3	2.3	5.1	9.3
2.	13.2	17.2	9.9	0.0			0	11.8	3.2	6.7	11.8
3.	9.0	16.0	7.1	---			0	0.3	2.7	8.2	13.4
4.	10.0	10.6	7.3	14.2	ri		0	0.0	2.6	5.7	10.3
5.	11.0	17.5	8.0	2.3	ri		0	9.6	3.1	6.2	8.8
6.	7.8	11.8	6.8	0.1	ri		0	0.1	2.1	4.6	7.2
7.	11.3	16.0	7.1	0.3	ri		0	0.5	2.2	6.2	12.4
8.	14.5	18.3	13.0	0.8	ri		0	13.4	5.0	7.7	14.9
9.	13.0	17.5	10.2	---			0	11.1	3.0	6.7	11.8
10.	14.6	20.1	10.5	---			0	4.1	4.6	7.7	15.4
11.	12.4	19.0	9.5	15.5	ri		0	0.1	2.0	5.7	9.8
12.	14.2	17.6	10.2	0.6	ri		0	12.8	4.0	6.7	13.9
13.	14.4	19.9	11.5	---			0	15.1	4.8	8.8	16.5
14.	12.2	15.1	8.5	---			0	14.7	2.5	4.6	8.8
15.	15.9	22.5	12.8	---			0	6.9	4.0	8.2	12.9
16.	10.1	14.4	9.2	0.1	ri		0	2.0	2.8	5.1	7.2
17.	9.9	12.2	9.2	0.7	ri		0	0.0	3.8	6.2	10.3
18.	8.5	10.9	8.0	0.2	ri		0	0.7	5.4	7.7	13.4
19.	8.5	10.3	6.8	1.1	ri		0	0.0	2.6	6.2	10.3
20.	12.0	17.8	8.8	0.7	ri		0	5.6	2.1	5.7	8.8
21.	10.8	13.0	9.2	0.8	ri		0	9.6	2.8	5.7	8.2
22.	10.3	12.0	8.8	---			0	0.0	1.8	4.1	6.2
23.	13.3	18.0	9.4	0.0			0	11.4	2.5	5.1	7.7
24.	12.4	17.5	9.0	---			0	13.3	3.5	6.7	9.8
25.	9.8	13.0	9.4	0.0			0	4.7	4.1	8.8	13.9
26.	9.3	11.7	8.5	0.0			0	12.2	4.1	9.3	12.4
27.	12.0	18.0	4.9	---			0	15.6	2.1	5.1	7.2
28.	13.9	18.0	9.0	---			0	8.2	2.9	6.2	9.3
29.	13.9	17.7	10.4	---			0	9.3	2.3	4.1	6.2
30.	13.9	16.5	12.6	---			0	6.5	2.1	5.1	7.7
31.	12.9	16.6	12.1	0.0			0	3.0	3.0	7.2	11.3



Meðalhiti	=	11.9 °C
Frávik frá meðaltali 1931-60	=	1.0 °C
Meðalhámarkshiti	=	15.9 °C
Meðallágmarkshiti	=	9.4 °C
Úrkomumagn	=	38.2 mm
Hlutfall úrkomu af meðaltali 1931-60	=	109.0 %
Meðalvindhraði	=	3.1 m/s
Sólskinsstundir	=	202.9 klst

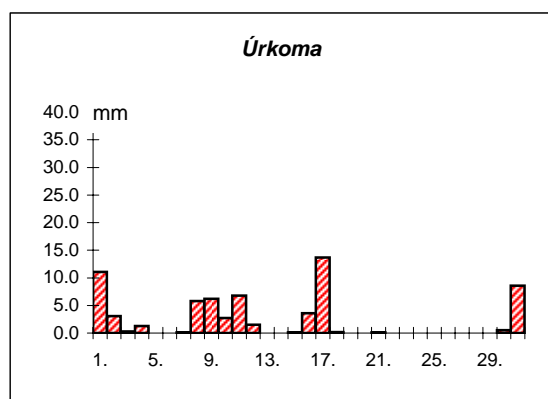
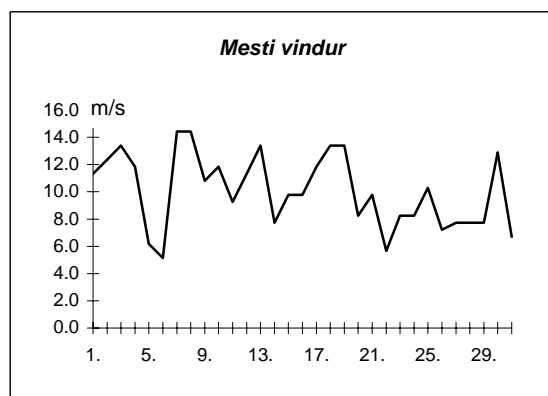
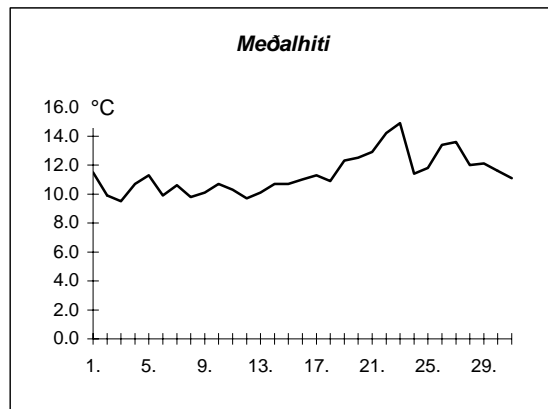
Dags	Meðalhiti (°C)	Hámark (°C)	Lágmark (°C)	Úrkoma (mm)	Úrkomutegund	Snjódýpt (cm)	Snjóhula (0-4)	Sólskin(klást)	Meðalvindur (m/s)	Mesti vindur (m/s)	Hviða (m/s)
1.	10.1	11.5	9.5	41.8	ri		0		2.1	7.2	9.8
2.	10.4	12.6	7.5	11.3	ri		0		4.2	6.7	10.3
3.	9.4	12.3	8.3	21.5	ri		0		9.6	14.9	22.1
4.	9.9	11.5	8.8	82.4	ri		0		5.6	9.8	12.9
5.	11.1	14.4	8.9	21.8	ri		0		3.2	5.1	7.2
6.	11.7	16.7	8.2	0.4	ri		0		3.6	8.8	13.9
7.	10.4	15.2	9.4	0.8	ri		0		2.5	5.1	6.2
8.	11.2	13.2	9.4	4.8	ri		0		5.2	10.8	15.4
9.	10.7	13.1	9.2	0.3	ri		0		5.9	9.8	16.0
10.	11.1	15.1	6.0	---			0		3.0	5.7	9.8
11.	11.8	18.0	9.0	7.9	ri		0		3.4	9.3	14.4
12.	13.2	18.2	9.6	5.4	ri		0		2.3	6.7	10.8
13.	11.5	17.7	8.7	---			0		3.3	7.2	11.3
14.	10.9	13.8	5.4	---			0		2.3	4.1	5.7
15.	11.2	14.0	8.9	---			0		2.6	6.2	9.3
16.	12.5	16.6	9.6	---			0		1.8	5.7	7.7
17.	12.2	14.9	10.2	0.3	ri		0		2.8	6.7	9.3
18.	13.0	17.1	9.0	0.0			0		4.9	10.3	16.0
19.	12.1	16.0	10.0	1.9	ri		0		3.0	7.2	12.9
20.	12.4	15.3	10.9	2.1	ri		0		1.3	3.6	5.1
21.	13.3	17.5	10.5	0.1	ri		0		1.5	4.6	5.7
22.	11.0	16.0	10.6	0.1	ri		0		1.4	4.1	5.7
23.	9.4	11.2	8.4	0.1	ri		0		1.5	3.6	4.6
24.	11.1	13.7	8.5	0.6	ri		0		2.0	3.6	5.1
25.	11.0	15.8	9.7	0.0			0		2.6	6.2	8.2
26.	8.3	11.1	5.0	---			0		2.5	6.2	7.2
27.	9.0	11.2	4.3	0.0			0		2.1	3.6	5.7
28.	11.4	22.0	8.8	0.1	ri		0		2.2	5.7	9.3
29.	12.4	16.1	7.8	---			0		1.6	4.1	5.7
30.	11.5	16.0	8.3	---			0		3.1	6.7	10.8
31.	11.5	15.0	7.9	---			0		3.1	7.7	9.3



Meðalhiti	=	11.2 °C
Meðalhámarkshiti	=	14.9 °C
Meðallágmarkshiti	=	8.6 °C
Úrkomumagn	=	203.7 mm
Meðalvindhraði	=	3.1 m/s

Útgefandi : **Veðurstofa Íslands**
 Heimilisfang : **Bústaðavegur 9**
150 Reykjavík

Dags	Meðalhiti (°C)	Hámark (°C)	Lágmark (°C)	Úrkoma (mm)	Úrkomutegund	Snjódýpt (cm)	Snjöhula (0-4)	Sólskin(klíst)	Meðalvindur (m/s)	Mesti vindur (m/s)	Hviða (m/s)
1.	11.5	13.7	10.4	11.1	ri		0		7.1	11.3	15.4
2.	9.9	13.7	7.8	3.1	ri		0		7.5	12.4	19.0
3.	9.5	14.3	6.6	0.3	ri		0		8.4	13.4	16.5
4.	10.7	14.1	7.6	1.3	ri		0		7.2	11.8	14.9
5.	11.3	13.8	9.9	---			0		3.3	6.2	7.7
6.	9.9	12.5	8.7	---			0		3.0	5.1	7.7
7.	10.6	12.2	9.7	0.1	ri		0		7.8	14.4	19.0
8.	9.8	11.4	8.8	5.8	ri		0		9.3	14.4	20.1
9.	10.1	12.4	6.8	6.2	ri		0		7.1	10.8	14.4
10.	10.7	12.9	9.3	2.7	ri		0		8.2	11.8	16.0
11.	10.3	12.4	8.7	6.8	ri		0		5.9	9.3	11.3
12.	9.7	11.5	8.1	1.5	ri		0		8.5	11.3	14.4
13.	10.1	11.7	9.0	0.0			0		6.2	13.4	15.4
14.	10.7	14.3	8.2	0.0			0		5.2	7.7	10.3
15.	10.7	11.7	9.4	0.1	ri		0		5.9	9.8	13.9
16.	11.0	12.0	10.2	3.6	ri		0		5.7	9.8	13.4
17.	11.3	14.8	8.4	13.7	ri		0		6.4	11.8	15.4
18.	10.9	14.9	8.8	0.2	ri		0		10.6	13.4	17.0
19.	12.3	16.0	8.4	---			0		7.5	13.4	16.0
20.	12.5	16.1	10.9	---			0		4.9	8.2	12.4
21.	12.9	16.3	9.8	0.1	ri		0		5.2	9.8	12.4
22.	14.2	17.5	10.8	---			0		3.3	5.7	8.2
23.	14.9	19.5	10.2	---			0		5.3	8.2	10.8
24.	11.4	18.2	10.0	---			0		5.2	8.2	10.8
25.	11.8	13.8	10.0	0.0			0		8.3	10.3	12.9
26.	13.4	17.0	9.4	---			0		3.6	7.2	9.8
27.	13.6	16.0	10.5	---			0		4.8	7.7	11.3
28.	12.0	14.9	10.3	0.0			0		4.6	7.7	9.8
29.	12.1	15.0	10.5	0.0			0		5.4	7.7	10.3
30.	11.6	13.8	10.4	0.5	ri		0		8.4	12.9	18.0
31.	11.1	12.8	9.8	8.6	ri		0		4.3	6.7	8.8



Meðalhiti	=	11.4 °C
Frávik frá meðaltali 1931-60	=	0.7 °C
Meðalhámarkshiti	=	14.2 °C
Meðallágmarkshiti	=	9.3 °C
Úrkomumagn	=	65.7 mm
Hlutfall úrkomu af meðaltali 1931-60	=	113.0 %
Meðalvindhraði	=	6.3 m/s