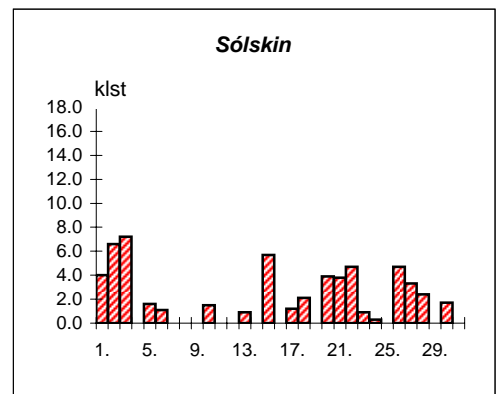
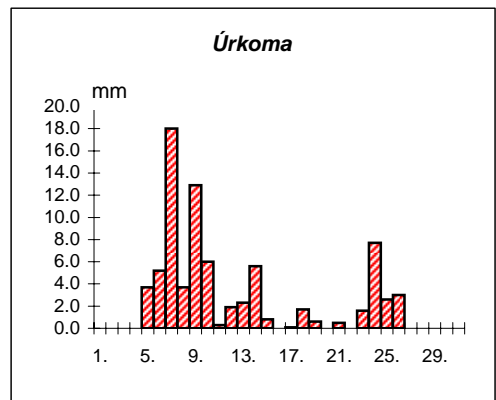
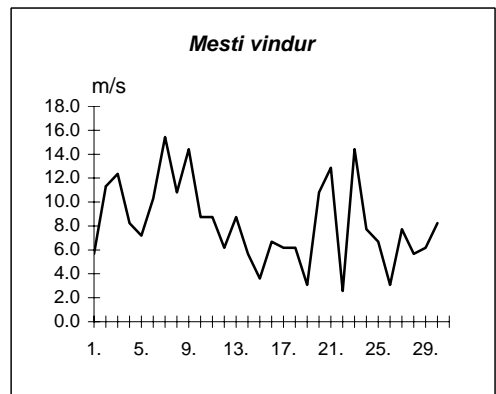
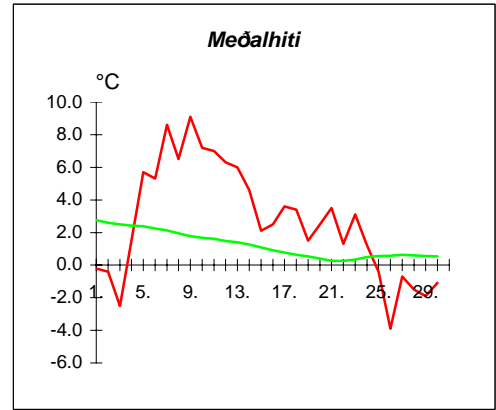
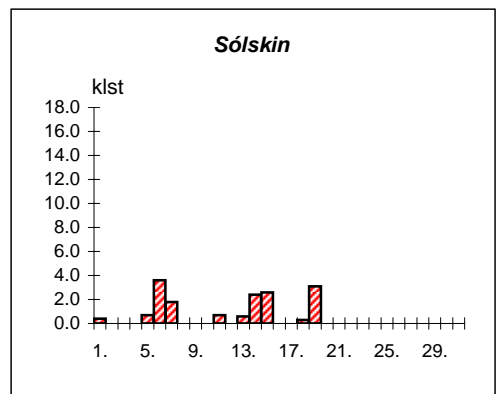
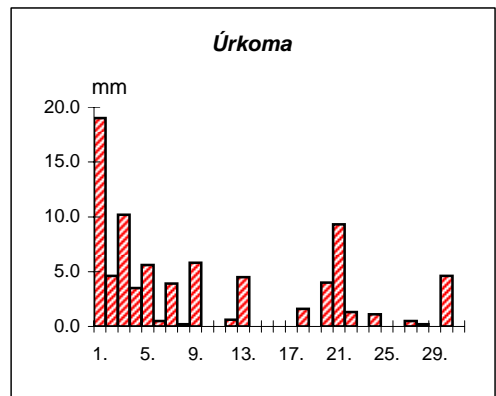
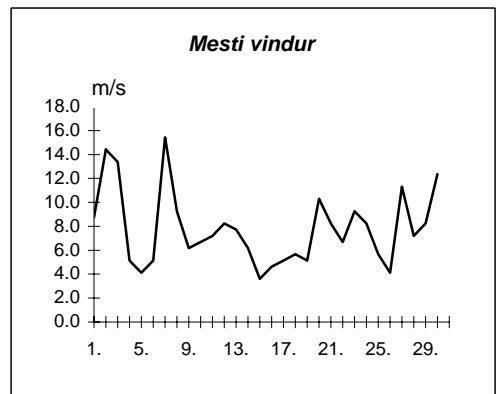
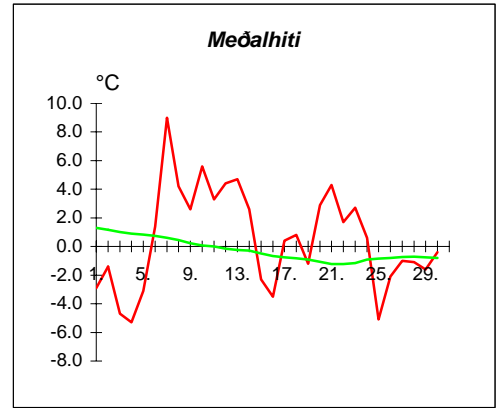


Dags	Meðalhiti (°C)	Hámark (°C)	Lágmark (°C)	Úrkoma (mm)	Úrkomutegund	Sníjódýpt (cm)	Sníjöhula (0-4)	Sólskin(klst)	Meðalvindur (m/s)	Mesti vindur (m/s)	Hviða (m/s)
1.	-0.2	2.4	-2.6	---		0	2	4.0	3.6	5.7	11.3
2.	-0.4	1.0	-2.2	---		0	2	6.6	6.9	11.3	17.0
3.	-2.5	-0.6	-3.4	---			0	7.2	4.4	12.4	17.5
4.	1.5	2.3	-5.8	---			0	0.0	5.2	8.2	16.0
5.	5.7	7.9	2.0	3.7	sl		0	1.6	4.8	7.2	12.4
6.	5.3	6.2	3.7	5.2	ri		0	1.1	3.9	10.3	16.5
7.	8.6	12.0	5.5	18.0	ri		0	0.0	10.1	15.4	24.2
8.	6.5	6.8	4.5	3.7	ri		0	0.0	4.7	10.8	16.0
9.	9.1	9.6	4.8	12.9	ri		0	0.0	9.7	14.4	21.1
10.	7.2	8.9	5.0	6.0	ri		0	1.5	5.1	8.8	13.9
11.	7.0	8.6	5.7	0.3	ri		0	0.0	5.3	8.8	14.4
12.	6.3	7.3	4.7	1.9	ri		0	0.0	3.6	6.2	9.8
13.	6.0	7.3	5.2	2.3	ri		0	0.9	4.5	8.8	12.9
14.	4.6	6.6	4.3	5.6	ri		0	0.0	3.8	5.7	8.8
15.	2.1	4.6	1.0	0.8	ri		0	5.7	1.4	3.6	4.6
16.	2.5	4.1	-1.0	---			0	0.0	4.1	6.7	11.3
17.	3.6	5.3	2.5	0.1	ri		0	1.2	3.1	6.2	11.3
18.	3.4	4.9	2.5	1.7	ri		0	2.1	2.9	6.2	9.8
19.	1.5	3.7	0.8	0.6	sl		0	0.0	1.4	3.1	5.1
20.	2.5	5.2	-0.9	---			0	3.9	4.4	10.8	18.0
21.	3.5	5.8	2.2	0.5	ri		0	3.8	5.1	12.9	19.6
22.	1.3	3.0	-0.1	---			0	4.7	1.2	2.6	5.1
23.	3.1	5.6	-0.6	1.6	ri		0	0.9	5.9	14.4	21.1
24.	1.2	2.7	0.3	7.7	sl	1	2	0.3	4.8	7.7	13.9
25.	-0.4	1.4	-1.5	2.6	sn	5	4	0.0	4.1	6.7	11.3
26.	-3.9	0.7	-5.5	3.0	sn	9	4	4.7	1.7	3.1	4.1
27.	-0.7	1.2	-5.7	---		9	4	3.3	4.3	7.7	12.4
28.	-1.5	0.6	-3.4	---		8	4	2.4	2.5	5.7	8.8
29.	-1.9	0.7	-4.7	---		8	4	0.0	1.4	6.2	9.3
30.	-1.1	1.2	-4.1	0.0		8	4	1.7	4.8	8.2	13.4



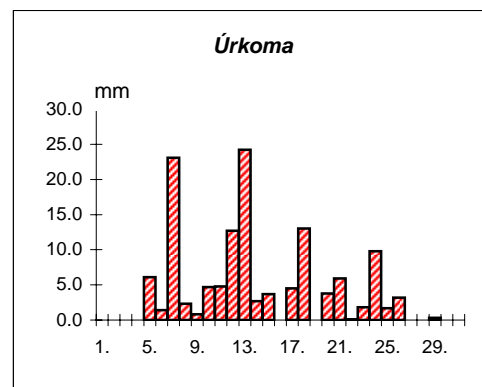
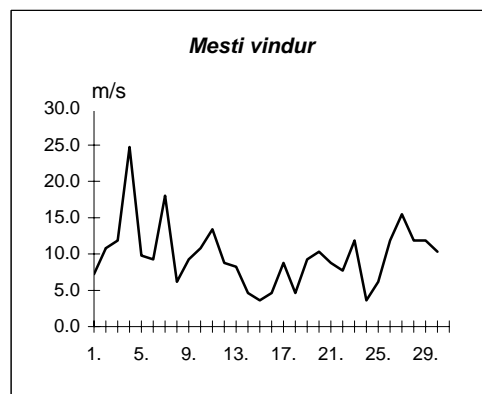
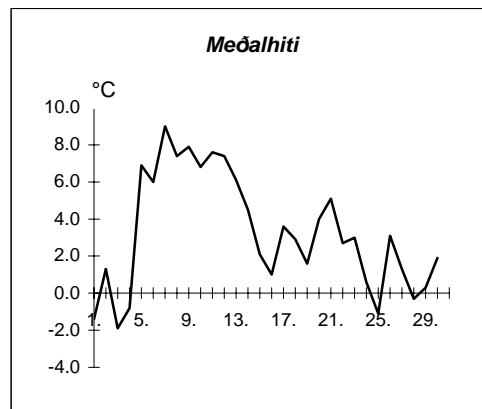
Meðalhiti	=	2.7 °C
Frávik frá meðaltali 1931-60	=	0.1 °C
Meðalhámarkshiti	=	4.6 °C
Meðallágmarkshiti	=	0.4 °C
Úrkomumagn	=	78.2 mm
Hlutfall úrkomu af meðaltali 1931-60	=	92.0 %
Meðalvindhraði	=	4.3 m/s
Sólskinsstundir	=	57.6 klst

Dags	Meðalhiti (°C)	Hámark (°C)	Lágmark (°C)	Úrkoma (mm)	Úrkomutegund	Sníjódýpt (cm)	Sníjöhula (0-4)	Sólskin(klst)	Meðalvindur (m/s)	Mesti vindur (m/s)	Hviða (m/s)
1.	-2.9	0.0	-5.5	19.0	sn	10	4	0.4	3.0	8.8	12.4
2.	-1.4	0.3	-3.2	4.6	sn	12	4	0.0	11.8	14.4	21.1
3.	-4.7	-0.5	-5.5	10.2	sn	20	4	0.0	5.8	13.4	19.6
4.	-5.3	-2.5	-8.1	3.5	sn	25	4	0.0	2.6	5.1	8.2
5.	-3.1	-0.5	-8.5	5.6	sn	30	4	0.7	2.5	4.1	6.7
6.	1.4	5.0	-3.6	0.5	sn	25	4	3.6	2.8	5.1	9.8
7.	9.0	12.5	4.0	3.9	sl	14	2	1.8	8.5	15.4	27.8
8.	4.2	11.9	3.5	0.2	ri		0	0.0	3.1	9.3	19.0
9.	2.6	5.3	-1.0	5.8	ri		2	0.0	3.3	6.2	8.8
10.	5.6	7.5	3.5	---			2	0.0	3.7	6.7	9.8
11.	3.3	5.3	-0.5	0.0			2	0.7	2.3	7.2	15.4
12.	4.4	8.2	2.4	0.6	ri		0	0.0	4.3	8.2	13.4
13.	4.7	7.3	1.7	4.5	ri		0	0.6	4.2	7.7	12.4
14.	2.6	6.5	1.2	---			0	2.4	3.0	6.2	8.8
15.	-2.3	1.2	-2.4	---			0	2.6	2.1	3.6	5.1
16.	-3.5	-0.5	-5.8	---			0	0.0	2.1	4.6	6.7
17.	0.4	2.5	-4.4	---			0	0.0	3.2	5.1	8.2
18.	0.8	2.2	-1.2	1.6	ri		0	0.3	2.5	5.7	8.2
19.	-1.2	2.5	-3.4	---			0	3.1	2.8	5.1	8.2
20.	2.9	5.0	-4.9	4.0	sl		2	0.0	5.5	10.3	17.0
21.	4.3	5.2	3.8	9.3	ri		0	0.0	5.5	8.2	13.4
22.	1.7	4.0	1.4	1.3	ri		0	0.0	3.0	6.7	9.8
23.	2.7	6.0	-0.8	0.0			0	0.0	6.7	9.3	15.4
24.	0.6	5.0	0.0	1.1	sl		0	0.0	4.3	8.2	13.4
25.	-5.1	2.1	-5.7	---			0	0.0	2.8	5.7	7.7
26.	-2.1	-0.5	-7.3	---			0	0.0	2.1	4.1	6.2
27.	-1.0	0.2	-1.9	0.5	sn		0	0.0	4.4	11.3	15.4
28.	-1.1	0.6	-2.7	0.2	sn	2	4	0.0	3.3	7.2	10.3
29.	-1.6	0.5	-4.0	---			0	0.0	3.5	8.2	11.3
30.	-0.4	0.2	-2.6	4.6	sn	4	4	0.0	8.8	12.4	17.5



Meðalhiti	=	0.5 °C
Frávik frá meðaltali 1931-60	=	-0.8 °C
Meðalhámarkshiti	=	3.4 °C
Meðallágmarkshiti	=	-2.1 °C
Úrkomumagn	=	81.0 mm
Hlutfall úrkomu af meðaltali 1931-60	=	180.0 %
Meðalvindhraði	=	4.1 m/s
Sólskinsstundir	=	16.2 klst

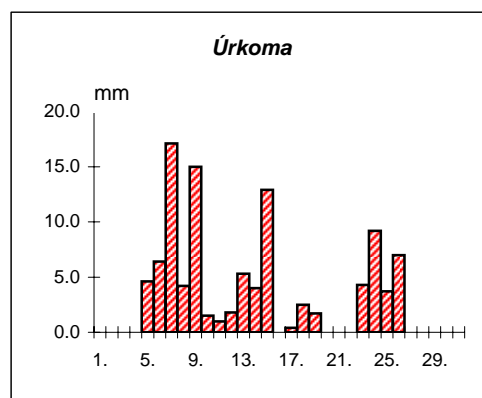
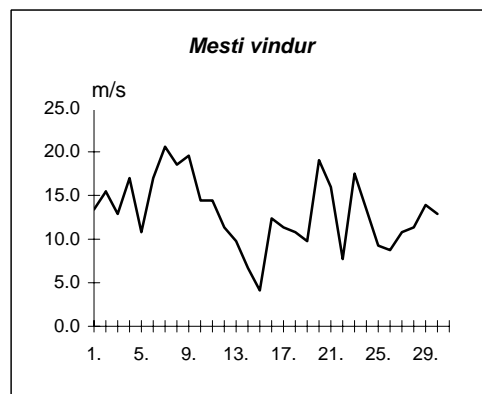
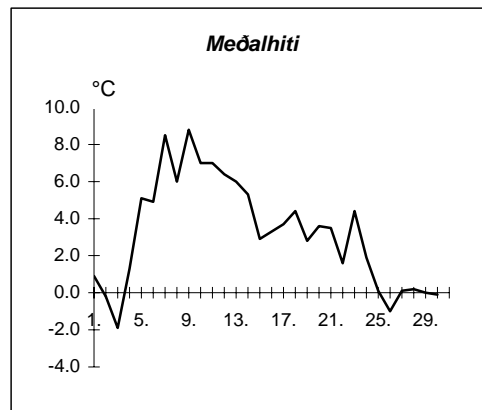
Dags	Meðalhiti (°C)	Hámark (°C)	Lágmark (°C)	Úrkoma (mm)	Úrkomutegund	Snjódýpt (cm)	Snjöhula (0-4)	Sólskin(klst)	Meðalvindur (m/s)	Mesti vindur (m/s)	Hviða (m/s)
1.	-1.4	1.5	-4.7	0.0			0		2.8	7.2	9.3
2.	1.3	4.0	-2.6	- - -			0		5.6	10.8	17.0
3.	-1.9	2.5	-2.6	- - -			0		5.7	11.8	18.0
4.	-0.8	3.5	-5.7	0.0			0		7.7	24.7	30.9
5.	6.9	8.6	-1.5	6.1	sl		0		5.9	9.8	13.4
6.	6.0	8.0	3.9	1.4	ri		0		3.0	9.3	13.4
7.	9.0	10.7	4.5	23.1	ri		0		9.7	18.0	24.7
8.	7.4	9.5	5.7	2.3	ri		0		3.6	6.2	7.7
9.	7.9	9.5	7.3	0.8	ri		0		5.5	9.3	12.4
10.	6.8	9.2	6.2	4.7	ri		0		3.6	10.8	14.9
11.	7.6	10.0	2.8	4.8	ri		0		6.4	13.4	18.5
12.	7.4	10.0	5.4	12.7	ri		0		4.3	8.8	11.8
13.	6.1	8.2	5.1	24.2	ri		0		4.6	8.2	13.4
14.	4.5	6.5	3.5	2.7	ri		0		2.1	4.6	7.2
15.	2.1	5.5	1.0	3.7	ri		0		1.8	3.6	4.6
16.	1.0	3.5	-0.6	- - -			0		1.5	4.6	7.2
17.	3.6	6.5	-0.5	4.5	ri		0		1.9	8.8	12.4
18.	2.9	5.5	1.8	13.0	ri		0		1.9	4.6	5.7
19.	1.6	4.8	-2.1	0.0			0		3.3	9.3	12.4
20.	4.0	5.1	2.3	3.8	ri		0		5.7	10.3	12.9
21.	5.1	6.7	3.4	5.9	ri		0		4.9	8.8	12.9
22.	2.7	6.7	0.5	0.1	ri		0		2.3	7.7	8.8
23.	3.0	5.9	-0.9	1.8	ri		0		3.9	11.8	15.4
24.	0.6	6.0	0.3	9.8	ri		0		2.3	3.6	7.7
25.	-1.1	1.0	-3.0	1.7	sl		0		2.7	6.2	7.2
26.	3.1	5.2	-1.2	3.2	sn	5	4		6.1	11.8	18.0
27.	1.3	5.5	0.2	- - -		1	2		10.7	15.4	23.7
28.	-0.3	4.0	-1.5	- - -		1	2		4.4	11.8	18.0
29.	0.3	2.4	-1.8	0.3	sn	4	4		6.2	11.8	14.9
30.	1.9	4.0	-0.8	- - -		2	2		5.9	10.3	14.9



Meðalhiti	=	3.3 °C
Meðalhámarkshiti	=	6.0 °C
Meðallágmarkshiti	=	0.8 °C
Úrkomumagn	=	130.6 mm
Meðalvindhraði	=	4.5 m/s

Útgefandi : Veðurstofa Íslands
 Heimilisfang : Bústaðavegur 9
 150 Reykjavík

Dags	Meðalhiti (°C)	Hámark (°C)	Lágmark (°C)	Úrkoma (mm)	Úrkomutegund	Sníjódýpt (cm)	Sníjöhula (0-4)	Sólskin(klst)	Meðalvindur (m/s)	Mesti vindur (m/s)	Hviða (m/s)
1.	0.9	2.1	-1.8	---			2		10.0	13.4	20.6
2.	-0.2	1.6	-0.5	---			2		12.3	15.4	20.6
3.	-1.9	2.7	-2.8	0.0			2		7.4	12.9	17.0
4.	1.3	2.8	-3.4	---			2		10.6	17.0	23.7
5.	5.1	7.5	2.5	4.6	sl		0		5.9	10.8	14.4
6.	4.9	6.0	3.3	6.4	ri		0		6.9	17.0	24.2
7.	8.5	11.1	4.9	17.1	ri		0		14.9	20.6	29.3
8.	6.0	6.7	4.4	4.2	ri		0		7.4	18.5	21.6
9.	8.8	9.6	4.5	15.0	ri		0		14.4	19.6	26.3
10.	7.0	9.3	6.0	1.5	ri		0		7.4	14.4	18.5
11.	7.0	8.2	6.3	1.0	ri		0		9.1	14.4	21.6
12.	6.4	7.3	5.5	1.8	ri		0		5.7	11.3	14.9
13.	6.0	7.1	5.0	5.3	ri		0		6.2	9.8	17.0
14.	5.3	6.9	4.0	4.0	ri		0		4.1	6.7	9.8
15.	2.9	6.0	2.2	12.9	ri		0		2.2	4.1	6.2
16.	3.3	5.2	0.6	---			0		7.0	12.4	17.5
17.	3.7	5.5	1.4	0.4	ri		0		4.3	11.3	15.4
18.	4.4	6.3	3.4	2.5	ri		0		6.0	10.8	15.4
19.	2.8	4.5	1.0	1.7	ri		0		4.4	9.8	14.4
20.	3.6	4.8	1.7	---			0		9.6	19.0	23.2
21.	3.5	5.6	2.4	0.0			0		9.3	16.0	20.6
22.	1.6	4.6	-0.2	---			0		3.9	7.7	9.3
23.	4.4	7.7	-0.1	4.3	ri		0		11.3	17.5	24.7
24.	1.9	5.6	1.5	9.2	sl	1	2		7.7	13.4	23.2
25.	0.1	2.7	-1.0	3.7	sl	3	4		5.5	9.3	13.4
26.	-1.0	2.1	-3.5	7.0	sl	10	4		5.4	8.8	11.8
27.	0.1	1.1	-1.0	---		6	4		7.5	10.8	14.4
28.	0.2	1.5	-0.5	---		6	4		7.5	11.3	16.5
29.	0.0	1.8	-2.0	0.0		6	4		10.2	13.9	18.0
30.	-0.1	1.1	-0.6	0.0		4	2		8.0	12.9	16.5



Meðalhiti	=	3.2 °C
Frávik frá meðaltali 1931-60	=	0.4 °C
Meðalhámarkshiti	=	5.2 °C
Meðallágmarkshiti	=	1.4 °C
Úrkomumagn	=	102.6 mm
Hlutfall úrkomu af meðaltali 1931-60	=	88.0 %
Meðalvindhraði	=	7.7 m/s