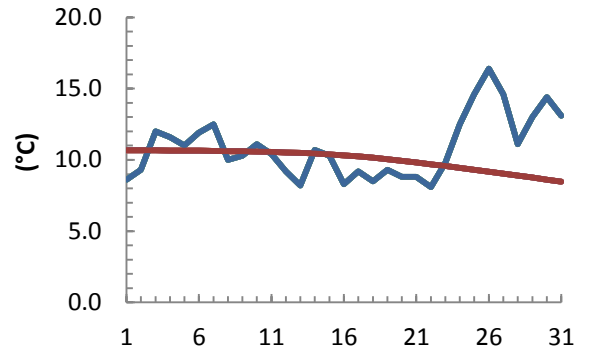


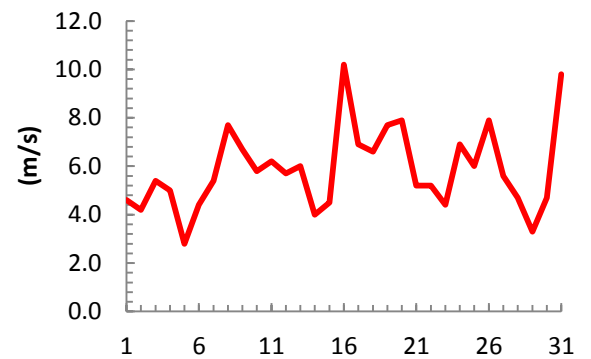
dagur	meðalhiti (°C)	Hámark (°C)	Lágmark (°C)	Úrkoma (mm)	Úrkomutegund	Snjódýpt (cm)	Snjóhula (0-4)	Sólskin (klst)	Meðalvindur (m/s)	Mesti vindur (m/s)	Hviða (m/s)
1	8.6	12.5	5.0	0.0		0	0	5.7	1.5	4.6	6.7
2	9.3	15.0	3.0			0	0	11.9	1.3	4.2	8.7
3	12.0	15.5	7.2	0.1	ri	0	0	8.1	2.0	5.4	7.5
4	11.6	16.0	8.5	0.8	ri	0	0	7.9	2.2	5.0	11.1
5	11.0	13.5	9.5	0.0		0	0	0.0	1.3	2.8	3.9
6	11.9	13.5	10.7	0.1	ri	0	0	0.1	1.6	4.4	6.1
7	12.5	15.9	10.4	0.5	ri	0	0	0.0	1.7	5.4	11.4
8	10.0	14.0	10.0	1.5	ri	0	0	0.0	4.4	7.7	12.3
9	10.3	13.5	8.1	10.1	ri	0	0	1.8	3.4	6.7	11.0
10	11.1	12.3	10.5	0.1	ri	0	0	0.0	3.6	5.8	9.2
11	10.4	13.5	9.0	0.0		0	0	5.7	3.4	6.2	9.1
12	9.2	12.4	8.8			0	0	0.0	2.9	5.7	9.5
13	8.2	11.0	6.0	1.1	ri	0	0	12.3	3.5	6.0	8.9
14	10.7	16.5	3.4			0	0	5.9	1.7	4.0	7.2
15	10.3	14.0	9.2	0.0		0	0	0.3	2.2	4.5	8.3
16	8.3	11.7	7.6	5.8	ri	0	0	0.5	6.3	10.2	14.5
17	9.2	13.9	6.0	2.7	ri	0	0	9.1	2.3	6.9	10.5
18	8.5	13.5	4.8			0	0	14.0	2.4	6.6	10.3
19	9.3	15.0	2.8			0	0	8.6	3.0	7.7	10.8
20	8.8	11.7	7.0			0	0	2.2	3.9	7.9	12.0
21	8.8	12.5	6.0	0.1	ri	0	0	12.6	2.2	5.2	7.2
22	8.1	12.5	2.8			0	0	11.4	2.4	5.2	7.7
23	9.8	14.5	5.2			0	0	9.3	1.9	4.4	6.9
24	12.5	14.4	9.5			0	0	0.1	4.1	6.9	13.8
25	14.6	17.5	12.0	0.2	ri	0	0	1.2	3.5	6.0	11.1
26	16.4	20.9	13.2			0	0	2.9	4.1	7.9	14.7
27	14.6	20.2	11.5			0	0	7.3	2.8	5.6	8.5
28	11.1	16.0	7.0			0	0	10.6	2.3	4.7	7.0
29	13.0	20.0	5.8			0	0	8.9	1.2	3.3	6.5
30	14.4	19.3	12.3	0.7	ri	0	0	4.1	2.6	4.7	8.8
31	13.1	18.4	8.7	0.3	ri	0	0	0.0	4.1	9.8	17.5

Meðalhiti (°C)	10.9
Frávik frá meðaltali 1961 - 1990 (°C)	0.9
Meðalhámarkshiti (°C)	14.9
Meðallágmarkshiti (°C)	7.8
Úrkomumagn (mm)	24.1
Hlutfall úrkomu af meðaltali 1961-1990 (%)	70.7
Meðalvindhraði (m/s)	2.8
Sólskinsstundir (klst)	162.5

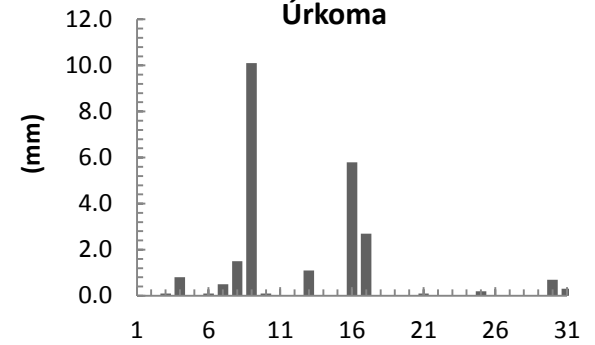
Meðalhiti



Mesti vindur



Úrkoma



Sólskin

