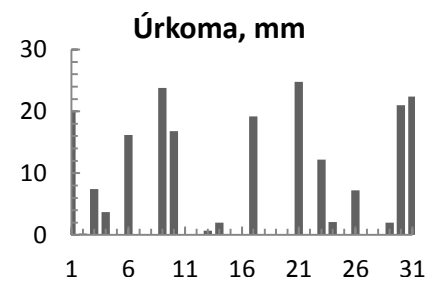
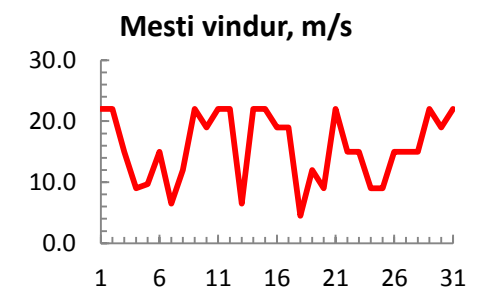
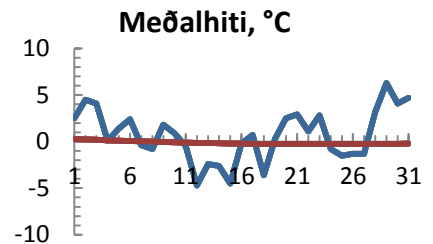


dagur	meðalhiti (°C)	Hámark (°C)	Lágmark (°C)	Úrkoma (mm)	Úrkomutegund	Snjódýpt (cm)	Snjöhula (0-4)	Sólskin (klst)	Meðalvindur (m/s)	Mesti vindur (m/s)	Hviða (m/s)
1	2.5	9.0	1.0	19.9	sl	0	0	0	12.2	22.0	
2	4.5	8.0	-2.2	0.2	sl	0	0	0	12.8	22.0	
3	4.1	6.8	3.4	7.4	ri	0	0	0	7.8	15.0	
4	0.1	5.5	-2.0	3.7	ri	0	0	0	3.2	9.0	
5	1.4	2.7	-2.9			0	0	0	5.8	9.7	
6	2.4	6.6	1.4	16.2	ri	0	0	0	9.4	15.0	
7	-0.4	3.2	-1.6			0	0	0	5.0	6.5	
8	-0.8	-0.4	-3.0			0	0	0	6.2	12.0	
9	1.8	7.0	-2.0	23.8	sl	0	0	0	8.9	22.0	
10	0.9	2.4	-1.8	16.8	sl	11	4	0	13.0	19.0	
11	-0.5	3.0	-2.0			8	4	0	17.1	22.0	
12	-4.7	-0.8	-5.8			6	4	0	7.9	22.0	
13	-2.4	-1.0	-8.4	0.7	sn	8	4	0	2.8	6.5	
14	-2.6	0.5	-4.2	2.0	sn	0	2	0	16.5	22.0	
15	-4.5	-3.6	-7.4			7	4	0	17.9	22.0	
16	-0.2	2.5	-4.6			7	4	0	8.5	19.0	
17	0.7	5.0	0.2	19.2	sl	0	0	0	10.9	19.0	
18	-3.6	0.8	-6.0	0.1	ri	0	0	0	2.9	4.5	
19	0.3	3.0	-3.4			0	0	0	7.4	12.0	
20	2.5	4.2	-0.5			0	0	0	5.8	9.0	
21	2.9	6.8	1.5	24.8	sl	0	0	0	10.9	22.0	
22	1.1	3.2	-1.4			0	0	0	4.3	15.0	
23	2.8	4.4	0.8	12.2	sl	0	0	0	8.9	15.0	
24	-0.8	3.5	-2.8	2.1	sl	1	4	0	2.8	9.0	
25	-1.5	-0.5	-4.0			1	4	0	4.1	9.0	
26	-1.3	2.6	-3.8	7.2	sn	5	4	0	5.1	15.0	
27	-1.3	1.2	-3.4			6	4	0	6.9	15.0	
28	3.2	5.5	-4.2			6	4	0	8.2	15.0	
29	6.3	7.0	3.4	2.0	ri	0	0	0	9.9	22.0	
30	4.1	7.8	2.6	21.0	ri	0	0	0	4.4	19.0	
31	4.7	7.2	2.0	22.4	ri	0	0	0	6.9	22.0	



Meðalhiti (°C)	0.7
Frávik frá meðaltali 1961 - 1990 (°C)	0.3
Meðalhámarkshiti (°C)	3.7
Meðallágmarkshiti (°C)	-2.0
Úrkomumagn (mm)	201.7
Hlutfall úrkomu af meðaltali 1961-1990 (%)	170.5
Meðalvindhraði (m/s)	8.2