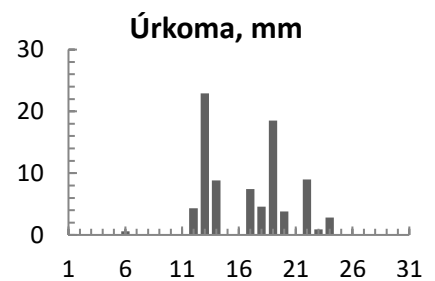
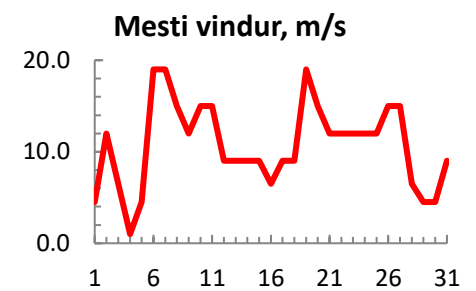
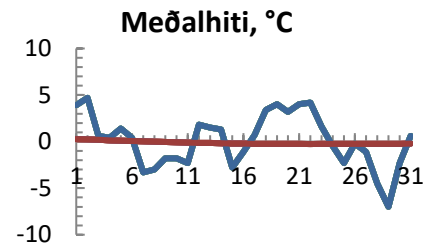


dagur	meðalhiti (°C)	Hámark (°C)	Lágmark (°C)	Úrkoma (mm)	Úrkomutegund	Snjódýpt (cm)	Snjóhula (0-4)	Sólskin (klst)	Meðalvindur (m/s)	Mesti vindur (m/s)	Hviða (m/s)
1	3.9	6.6	-1.8			0	2		2.4	4.5	
2	4.7	8.5	2.3			0	0		8.7	12.0	
3	0.6	6.0	-1.4			0	0		1.1	6.5	
4	0.4	1.8	-1.0			0	0		0.6	1.0	
5	1.4	2.6	-1.2			0	0		2.9	4.5	
6	0.4	2.4	-0.4	0.6	sl	0	2		9.9	19.0	
7	-3.3	0.0	-5.2			0	0		11.4	19.0	
8	-3.0	-2.5	-4.6			0	0		9.0	15.0	
9	-1.8	-0.6	-3.8			0	0		7.1	12.0	
10	-1.8	-0.8	-4.6			0	0		11.3	15.0	
11	-2.3	-0.8	-4.6			0	0		4.3	15.0	
12	1.8	4.2	-2.4	4.3	sl	0	0		3.0	9.0	
13	1.5	4.2	-0.6	22.9	sl	0	0		4.6	9.0	
14	1.3	3.4	-0.4	8.8	sl	0	0		6.4	9.0	
15	-2.8	0.4	-3.8			0	0		5.8	9.0	
16	-1.1	0.0	-5.0			0	0		2.6	6.5	
17	0.7	4.4	-0.7	7.4	sl	0	0		3.9	9.0	
18	3.4	4.8	-1.2	4.6	sl	6	4		2.5	9.0	
19	4.0	6.6	3.2	18.5	ri	0	0		13.4	19.0	
20	3.2	5.0	2.2	3.8	ri	0	0		10.2	15.0	
21	4.0	4.6	2.3	0.1	ri	0	0		9.2	12.0	
22	4.2	6.2	1.0	9.0	ri	0	0		7.6	12.0	
23	1.6	5.8	-0.8	0.9	ri	0	0		4.5	12.0	
24	-0.5	2.0	-2.6	2.8	sn	3	4		5.4	12.0	
25	-2.3	-0.5	-4.0			2	4		7.7	12.0	
26	-0.2	-0.2	-4.0			2	4		10.1	15.0	
27	-1.1	2.4	-2.8			1	4		7.6	15.0	
28	-4.5	-1.0	-6.2			1	4		4.8	6.5	
29	-7.0	-6.0	-7.7			0	2		4.0	4.5	
30	-2.3	-0.5	-8.0			0	2		2.9	4.5	
31	0.6	1.5	-2.7			0	2		6.1	9.0	



Meðalhiti (°C)	0.1
Frávik frá meðaltali 1961 - 1990 (°C)	-0.2
Meðalhámarkshiti (°C)	2.3
Meðallágmarkshiti (°C)	-2.3
Úrkomumagn (mm)	83.7
Hlutfall úrkomu af meðaltali 1961-1990 (%)	70.8
Meðalvindhraði (m/s)	6.2