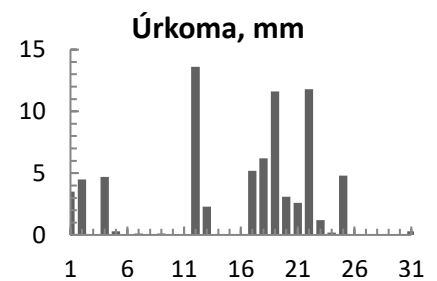
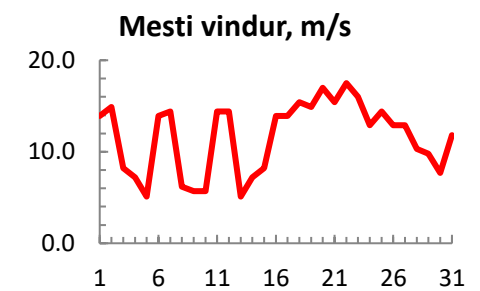
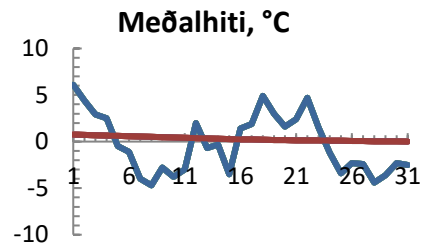


dagur	meðalhiti (°C)	Hámark (°C)	Lágmark (°C)	Úrkoma (mm)	Úrkomutegund	Snjódýpt (cm)	Snjóhula (0-4)	Sólskin (klst)	Meðalvindur (m/s)	Mesti vindur (m/s)	Hviða (m/s)
1	6.1	7.5	5.2	3.5	ri	0	0		9.7	13.9	17.0
2	4.4	6.0	4.0	4.5	ri	0	0		10.7	14.9	19.0
3	2.9	5.0	1.8			0	0		3.4	8.2	9.8
4	2.5	4.1	1.8	4.7	ri	0	0		3.7	7.2	9.3
5	-0.5	2.9	-1.0	0.3	ri	0	0		3.2	5.1	6.7
6	-1.1	0.4	-3.0	0.0		0	0		11.2	13.9	18.5
7	-4.0	3.4	-3.9	0.1	sn	0	0		6.4	14.4	18.5
8	-4.7	-1.5	-7.3	0.0		0	2		3.0	6.2	7.7
9	-2.8	-1.0	-4.1	0.1	sn	0	2		2.6	5.7	6.7
10	-3.8	-2.4	-6.7			0	0		3.6	5.7	7.7
11	-3.0	-0.7	-7.3			0	2		4.8	14.4	19.6
12	2.0	4.8	-0.9	13.6	ri	0	0		5.1	14.4	20.6
13	-0.7	1.5	-2.3	2.3	sn	0	0		3.3	5.1	5.7
14	-0.3	1.9	-1.2			0	0		3.8	7.2	8.8
15	-3.5	-0.6	-4.3			0	0		3.3	8.2	10.3
16	1.4	5.1	-4.0			0	0		8.3	13.9	18.5
17	1.9	4.2	0.7	5.2	sl	0	0		7.3	13.9	19.0
18	4.9	7.3	1.3	6.2	sl	0	0		6.1	15.4	22.1
19	3.0	5.3	1.7	11.6	ri	0	0		10.6	14.9	21.1
20	1.6	3.8	-0.3	3.1	sl	0	0		12.8	17.0	23.2
21	2.4	3.5	-0.4	2.6	sn	0	2		8.3	15.4	23.7
22	4.7	7.8	1.8	11.8	ri	0	0		12.5	17.5	22.1
23	1.5	4.9	0.8	1.2	ri	0	0		6.8	16.0	19.6
24	-1.2	3.9	-2.1	0.2	sl	0	0		7.4	12.9	16.0
25	-3.4	-0.5	-4.2	4.8	sn	5	4		8.7	14.4	19.6
26	-2.3	-1.2	-6.3			0	2		9.5	12.9	17.0
27	-2.4	-0.5	-3.3			0	2		8.6	12.9	16.5
28	-4.4	-2.1	-7.2			0	2		6.4	10.3	12.9
29	-3.6	-2.8	-5.3			0	2		5.8	9.8	12.9
30	-2.3	-1.3	-4.7			0	2		4.7	7.7	9.8
31	-2.5	-0.5	-4.3	0.3	sn	0	2		7.3	11.8	14.9



Meðalhiti (°C)	-0.2
Frávik frá meðaltali 1961 - 1990 (°C)	-0.5
Meðalhámarkshiti (°C)	2.2
Meðallágmarkshiti (°C)	-2.1
Úrkomumagn (mm)	76.1
Hlutfall úrkomu af meðaltali 1961-1990 (%)	69.9
Meðalvindhraði (m/s)	6.7