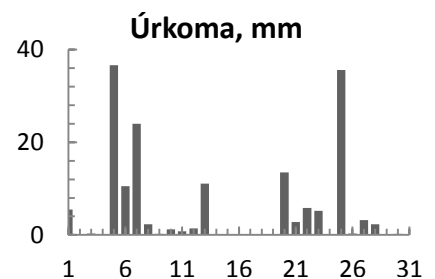
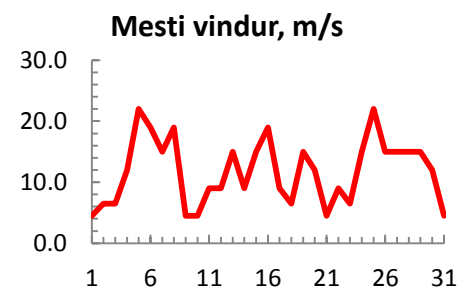
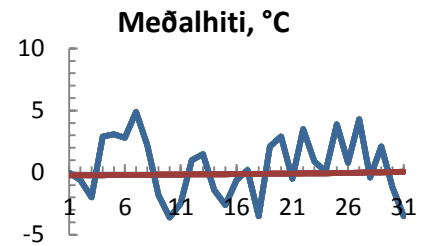


dagur	meðalhiti (°C)	Hámark (°C)	Lágmark (°C)	Úrkoma (mm)	Úrkomutegund	Snjódýpt (cm)	Snjóhula (0-4)	Sólskin (klst)	Meðalvindur (m/s)	Mesti vindur (m/s)	Hviða (m/s)
1	0.0	4.4	-2.0	5.5	ri	0	0	0.0	2.4	4.5	
2	-0.6	0.8	-2.4			0	0	0.0	4.1	6.5	
3	-2.0	1.2	-4.3	0.3	sn	1	4	0.0	3.1	6.5	
4	2.9	7.4	-4.7			1	4	0.0	5.6	12.0	
5	3.1	7.8	0.3	36.6	ri	0	0	0.0	10.2	22.0	
6	2.8	5.4	0.3	10.5	sl	0	0	0.0	8.9	19.0	
7	4.9	7.8	1.1	24.0	sl	0	0	0.0	14.6	15.0	
8	2.2	5.0	1.3	2.3	sl	0	0	0.0	8.9	19.0	
9	-1.8	2.5	-3.2	0.2	sn	1	4	0.0	2.9	4.5	
10	-3.6	-2.2	-6.0	1.2	sn	2	4	0.0	2.8	4.5	
11	-2.5	-1.4	-5.3	0.8	sn	4	4	0.0	5.2	9.0	
12	1.0	2.4	-2.4	1.4	sn	7	4	0.0	5.6	9.0	
13	1.5	2.8	0.4	11.1	sl	5	4	0.0	8.6	15.0	
14	-1.4	1.4	-2.4	0.1	ri	0	0	0.0	6.6	9.0	
15	-2.6	-0.6	-4.6			0	0	0.0	12.4	15.0	
16	-0.6	-0.4	-5.2			0	0	0.0	11.2	19.0	
17	0.2	2.5	-1.4			0	0	0.0	5.3	9.0	
18	-3.5	0.0	-4.7			0	0	0.0	4.2	6.5	
19	2.1	3.5	-5.3	0.1	sn	1	4	0.0	11.4	15.0	
20	2.9	4.8	1.5	13.5	ri	0	0	0.0	2.9	12.0	
21	-0.5	3.2	-2.2	2.8	ri	0	0	0.0	2.1	4.5	
22	3.5	5.6	-2.0	5.8	ri	0	0	0.0	5.5	9.0	
23	0.9	5.0	-1.2	5.2	ri	0	0	0.0	2.9	6.5	
24	0.1	2.8	-2.4			0	0	0.0	6.8	15.0	
25	3.9	6.6	-2.4	35.6	sl	0	0	0.0	15.2	22.0	
26	0.8	3.8	-1.6	0.3	ri	0	0	0.0	3.0	15.0	
27	4.3	6.6	0.0	3.2	ri	0	0	0.0	9.4	15.0	
28	-0.4	5.0	-3.2	2.3	ri	0	0	0.0	2.4	15.0	
29	2.1	4.5	-1.8			0	0	0.0	10.6	15.0	
30	-1.2	3.0	-2.6	0.2	sn	0	0	0.0	8.6	12.0	
31	-3.5	-1.0	-5.6			0	0	0.0	2.3	4.5	



Meðalhiti (°C)	0.5
Frávik frá meðaltali 1961 - 1990 (°C)	0.4
Meðalhámarkshiti (°C)	3.2
Meðallágmarkshiti (°C)	-2.4
Úrkomumagn (mm)	163.0
Hlutfall úrkomu af meðaltali 1961-1990 (%)	124.0
Meðalvindhraði (m/s)	6.6