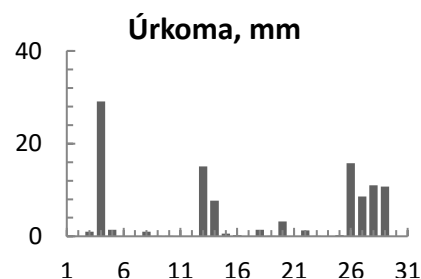
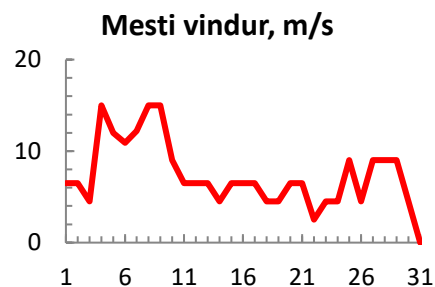
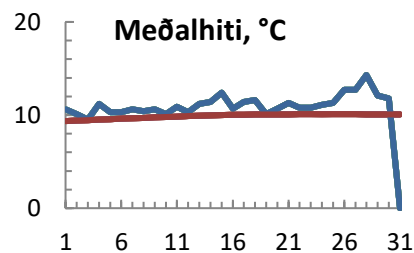


dagur	meðalhiti (°C)	Hámark (°C)	Lágmark (°C)	Úrkoma (mm)	Úrkomutegund	Snjódýpt (cm)	Snjóhula (0-4)	Sólskin (klst)	Meðalvindur (m/s)	Mesti vindur (m/s)	Hviða (m/s)
1	10.6	12.4	8.6			0	0		4	6.5	
2	10.1	12.8	9.4			0	0		0	6.5	
3	9.5	11.0	7.6	1.0	ri	0	0		0	4.5	
4	11.2	14.2	8.2	29.1	ri	0	0		0	15	
5	10.3	13.6	8.3	1.4	ri	0	0		0	12	
6	10.3	11.9	8.3			0	0		0	10.9	
7	10.6	13.5	6.8			0	0		0	12.2	
8	10.4	11.5	9.0	1.0	ri	0	0		0	15	
9	10.6	12.2	9.0	0.1	ri	0	0		0	15	
10	10.1	12.0	7.8	0.1	ri	0	0		0	9	
11	10.9	13.4	9.2			0	0		0	6.5	
12	10.3	11.4	8.8			0	0		0	6.5	
13	11.2	13.4	8.8	15.1	ri	0	0		0	6.5	
14	11.4	13.8	10.0	7.7	ri	0	0		0	4.5	
15	12.4	17.4	9.2	0.6	ri	0	0		0	6.5	
16	10.7	14.4	9.3	0.2	ri	0	0		0	6.5	
17	11.4	14.8	10.0			0	0		0	6.5	
18	11.6	15.5	9.0	1.4	ri	0	0		0	4.5	
19	10.1	14.8	8.8	0.1	ri	0	0		0	4.5	
20	10.7	12.4	8.6	3.2	ri	0	0		0	6.5	
21	11.3	15.5	8.8			0	0		0	6.5	
22	10.8	12.8	8.8	1.3	ri	0	0		0	2.5	
23	10.8	12.8	7.2	0.1	ri	0	0		0	4.5	
24	11.1	14.0	6.3			0	0		0	4.5	
25	11.3	12.8	9.8	0.2	ri	0	0		0	9	
26	12.7	16.5	10.0	15.8	ri	0	0		0	4.5	
27	12.7	16.8	10.0	8.6	ri	0	0		0	9	
28	14.3	20.2	12.2	11.0	ri	0	0		0	9	
29	12.1	15.2	10.6	10.7	ri	0	0		0	9	
30	11.8	15.2	10.4			0	0		0	4.5	
31	0.0	0.0	0.0			0	0		0	0	



Meðalhiti (°C)	11.1
Frávik frá meðaltali 1961 - 1990 (°C)	0.7
Meðalhámarkshiti (°C)	13.9
Meðallágmarkshiti (°C)	9.0
Úrkomumagn (mm)	109.7
Hlutfall úrkomu af meðaltali 1961-1990 (%)	157.8
Meðalvindhraði (m/s)	4.0