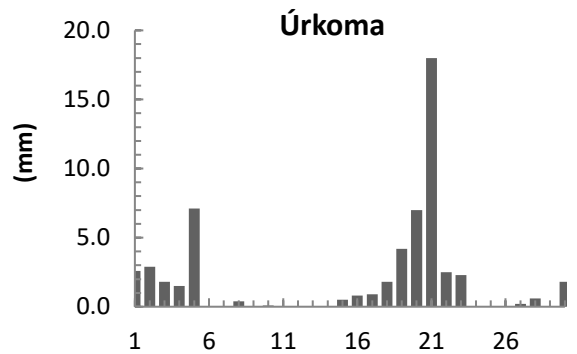
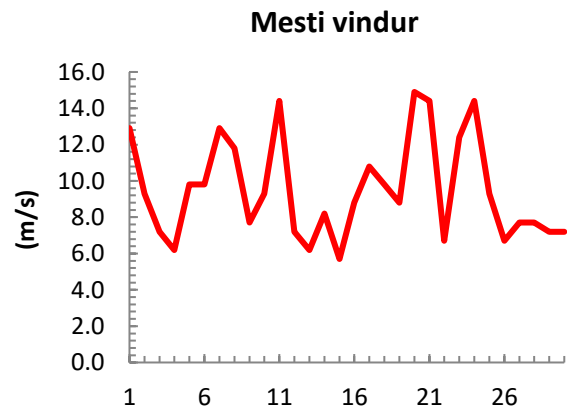
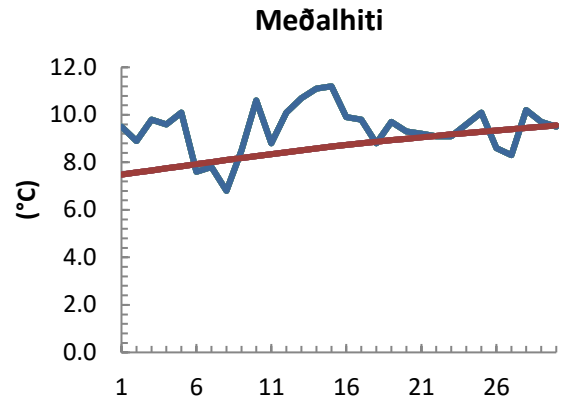


dagur	meðalhiti (°C)	Hámark (°C)	Lágmark (°C)	Úrkoma (mm)	Úrkomutegund	Snjódypt (cm)	Snjóhula (0-4)	Sólskin (klst)	Meðalvindur (m/s)	Mesti vindur (m/s)	Hviða (m/s)
1	9.5	13.0	7.4	2.6	ri	0	0		9.6	12.9	17.0
2	8.9	11.9	8.9	2.9	ri	0	0		3.4	9.3	12.4
3	9.8	14.3	6.6	1.8	ri	0	0		4.4	7.2	9.8
4	9.6	12.9	7.6	1.5	ri	0	0		2.9	6.2	7.7
5	10.1	12.9	8.5	7.1	ri	0	0		5.5	9.8	12.4
6	7.6	11.8	5.9			0	0		7.1	9.8	12.4
7	7.8	10.3	6.2	0.0		0	0		10.2	12.9	17.0
8	6.8	9.6	4.2	0.4	ri	0	0		8.8	11.8	14.9
9	8.5	12.6	3.9			0	0		3.3	7.7	9.8
10	10.6	14.1	6.7	0.1	ri	0	0		5.2	9.3	11.3
11	8.8	13.2	6.9	0.0		0	0		9.9	14.4	17.0
12	10.1	15.0	6.3			0	0		4.2	7.2	8.8
13	10.7	14.0	8.9			0	0		3.2	6.2	8.2
14	11.1	14.6	8.9	0.0		0	0		3.0	8.2	9.8
15	11.2	14.7	9.6	0.5	ri	0	0		2.6	5.7	7.2
16	9.9	12.4	7.6	0.8	ri	0	0		5.5	8.8	11.8
17	9.8	12.2	8.3	0.9	ri	0	0		6.6	10.8	13.4
18	8.8	11.3	8.3	1.8	ri	0	0		6.4	9.8	11.8
19	9.7	13.6	7.3	4.2	ri	0	0		4.6	8.8	10.8
20	9.3	13.6	7.8	7.0	ri	0	0		10.6	14.9	19.6
21	9.2	11.7	7.9	18.0	ri	0	0		8.4	14.4	19.0
22	9.1	11.4	7.0	2.5	ri	0	0		4.0	6.7	9.3
23	9.1	11.5	7.8	2.3	ri	0	0		8.7	12.4	15.4
24	9.6	12.0	7.9	0.0		0	0		10.8	14.4	18.0
25	10.1	13.0	7.1			0	0		5.2	9.3	11.8
26	8.6	12.2	7.8			0	0		4.3	6.7	8.8
27	8.3	11.4	6.5	0.2	ri	0	0		5.2	7.7	9.8
28	10.2	13.0	7.3	0.6	ri	0	0		4.8	7.7	9.8
29	9.7	12.7	9.3	0.0		0	0		4.7	7.2	9.3
30	9.5	12.0	8.1	1.8	ri	0	0		4.6	7.2	9.8



Meðalhiti (°C)	9.4
Frávik frá meðaltali 1961 - 1990 (°C)	0.7
Meðalhámarkshiti (°C)	12.6
Meðallágmarkshiti (°C)	7.4
Úrkomumagn (mm)	57.0
Hlutfall úrkomu af meðaltali 1961-1990 (%)	83.9
Meðalvindhraði (m/s)	5.9