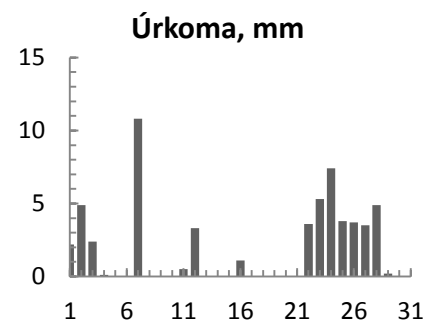
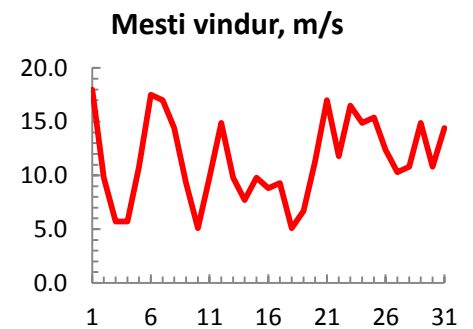
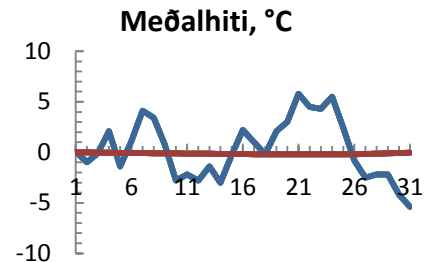


dagur	meðalhiti (°C)	Hámark (°C)	Lágmark (°C)	Úrkoma (mm)	Úrkomutegund	Snjódýpt (cm)	Snjóhula (0-4)	Sólskin (klst)	Meðalvindur (m/s)	Mesti vindur (m/s)	Hviða (m/s)
1	0.1	1.9	-1.0	2.2	sn	2	4		6.2	18.0	22.1
2	-1.0	1.0	-2.4	4.9	sn	13	4		4.2	9.8	12.9
3	-0.1	0.5	-2.3	2.4	sn	17	4		3.8	5.7	7.2
4	2.1	3.5	-0.5	0.1	ri	15	4		4.0	5.7	6.2
5	-1.4	2.5	-3.6			15	4		5.4	10.8	12.9
6	1.1	3.0	-0.9			16	4		13.4	17.5	21.6
7	4.1	5.7	3.0	10.8	ri	0	2		12.6	17.0	23.2
8	3.4	4.6	2.7	0.0		0	0		10.7	14.4	20.1
9	0.8	3.5	0.3			0	0		5.0	9.3	11.3
10	-2.8	0.7	-3.4	0.0		0	0		2.0	5.1	5.7
11	-2.2	-0.9	-4.3	0.5	sn	0	2		5.9	9.8	13.4
12	-2.8	-0.7	-3.5	3.3	sn	0	2		9.6	14.9	19.0
13	-1.4	-0.5	-2.9			0	2		6.6	9.8	12.9
14	-3.0	-1.0	-5.2			0	2		2.7	7.7	10.3
15	-0.3	2.9	-5.2			0	2		5.8	9.8	13.9
16	2.2	3.6	1.4	1.1	ri	0	0		6.1	8.8	12.4
17	1.0	3.0	-0.3			0	2		6.2	9.3	11.3
18	-0.2	2.7	-1.2			0	2		3.5	5.1	7.2
19	2.1	3.5	-1.9			0	2		4.9	6.7	9.3
20	3.0	3.6	2.0	0.0		0	0		8.6	11.3	16.0
21	5.8	7.2	3.2	0.0		0	0		12.1	17.0	23.2
22	4.5	7.2	2.9	3.6	ri	0	0		4.8	11.8	17.0
23	4.3	5.1	2.9	5.3	ri	0	0		10.1	16.5	20.6
24	5.5	7.0	3.7	7.4	ri	0	0		10.8	14.9	21.6
25	2.4	6.3	0.6	3.8	ri	0	0		11.3	15.4	20.6
26	-0.8	2.5	-1.7	3.7	sl	2	4		5.9	12.4	16.0
27	-2.5	-0.5	-3.4	3.5	sn	3	4		4.1	10.3	12.9
28	-2.2	-0.4	-3.8	4.9	sn	6	4		4.7	10.8	13.9
29	-2.2	-1.3	-2.6	0.2	sn	6	4		11.5	14.9	19.0
30	-4.2	-1.8	-4.7			6	4		5.7	10.8	13.9
31	-5.4	-3.5	-9.1			6	4		8.4	14.4	18.0



Meðalhiti (°C)	0.3
Frávik frá meðaltali 1961 - 1990 (°C)	0.4
Meðalhámarkshiti (°C)	2.3
Meðallágmarkshiti (°C)	-1.3
Úrkomumagn (mm)	57.7
Hlutfall úrkomu af meðaltali 1961-1990 (%)	58.7
Meðalvindhraði (m/s)	7.0