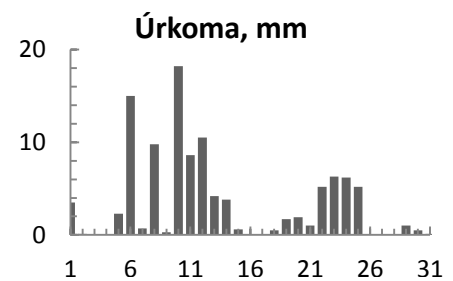
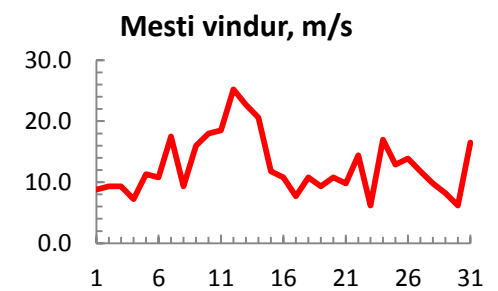
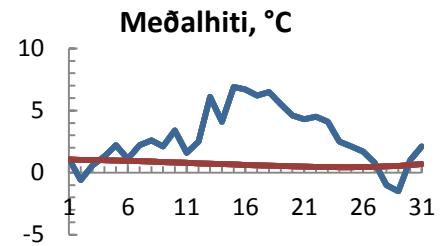


dagur	meðalhiti (°C)	Hámark (°C)	Lágmark (°C)	Úrkoma (mm)	Úrkomutegund	Snjódýpt (cm)	Snjöhula (0-4)	Sólskin (klst)	Meðalvindur (m/s)	Mesti vindur (m/s)	Hviða (m/s)
1	1.1	3.1	0.5	3.5	sl	0	2	5.5	8.8	11.3	
2	-0.6	1.7	-2.3	0.1	sl	0	0	4.1	9.3	11.8	
3	0.6	2.8	-3.1			0	0	5.0	9.3	11.8	
4	1.3	4.0	0.1	0.0		0	0	3.8	7.2	9.8	
5	2.2	3.7	1.2	2.3	sl	0	0	5.5	11.3	16.0	
6	1.1	3.7	0.7	15.0	sl	0	0	7.0	10.8	13.4	
7	2.2	4.1	-0.1	0.7	sl	0	2	7.7	17.5	25.2	
8	2.6	5.0	1.3	9.8	sl	0	0	4.4	9.3	12.4	
9	2.1	3.6	-0.4	0.3	ri	0	0	6.4	16.0	23.2	
10	3.4	7.0	1.0	18.2	ri	0	0	14.2	18.0	24.7	
11	1.6	3.3	-0.3	8.6	sl	0	2	10.9	18.5	25.7	
12	2.5	5.3	0.2	10.5	sl	0	0	14.2	25.2	32.9	
13	6.1	8.6	0.0	4.2	sl	0	0	14.2	22.7	32.9	
14	4.1	9.0	3.6	3.8	ri	0	0	8.1	20.6	24.7	
15	6.9	7.4	2.5	0.6	ri	0	0	9.8	11.8	17.0	
16	6.7	8.2	6.6	0.0		0	0	7.4	10.8	16.0	
17	6.2	8.7	5.5			0	0	5.4	7.7	10.8	
18	6.5	7.6	5.1	0.5	ri	0	0	7.8	10.8	14.4	
19	5.5	7.4	3.5	1.7	ri	0	0	5.4	9.3	11.3	
20	4.6	6.5	4.0	1.9	ri	0	0	6.6	10.8	13.9	
21	4.3	6.8	3.2	1.0	ri	0	0	4.8	9.8	11.8	
22	4.5	7.0	2.9	5.2	ri	0	0	6.9	14.4	20.1	
23	4.1	7.5	2.3	6.3	ri	0	0	3.6	6.2	8.2	
24	2.5	6.3	0.6	6.2	sl	0	0	8.2	17.0	21.1	
25	2.1	4.7	-0.2	5.2	sl	0	2	7.1	12.9	16.5	
26	1.7	4.8	1.6			0	2	9.2	13.9	17.5	
27	0.8	3.2	-0.1	0.0		0	0	9.8	11.8	15.4	
28	-1.0	2.2	-3.0			0	0	6.8	9.8	12.9	
29	-1.5	1.0	-2.6	1.0	sn	0	2	6.2	8.2	9.8	
30	1.0	3.8	-1.3	0.5	sn	2	4	4.2	6.2	7.7	
31	2.1	4.2	-0.6	0.1	sn	0	2	11.1	16.5	23.2	



Meðalhiti (°C)	2.8
Frávik frá meðaltali 1961 - 1990 (°C)	2.1
Meðalhámarkshiti (°C)	5.2
Meðallágmarkshiti (°C)	1.1
Úrkomumagn (mm)	107.2
Hlutfall úrkomu af meðaltali 1961-1990 (%)	107.0
Meðalvindhraði (m/s)	7.5