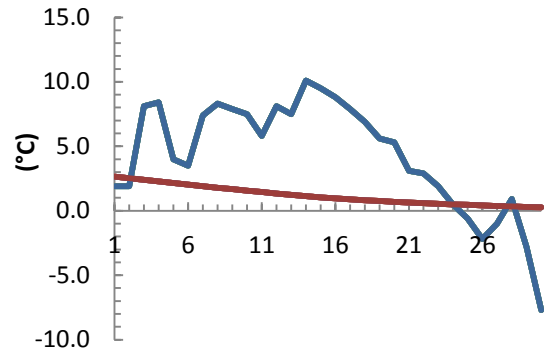


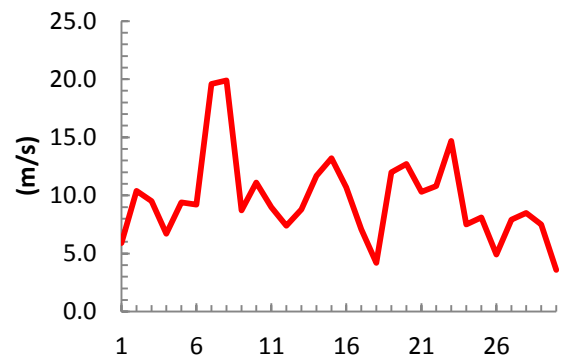
dagur	meðalhiti (°C)	Hámark (°C)	Lágmark (°C)	Úrkoma (mm)	Úrkomutegund	Snjódjúpt (cm)	Snjóhúla (0-4)	Sólskin (klst)	Meðalvindur (m/s)	Mesti vindur (m/s)	Hviða (m/s)
1	1.9	6.8	0.4	0.9	ri	0	0	6.3	2.6	5.9	11.0
2	1.9	4.0	-1.1			0	0	0.0	5.0	10.4	17.7
3	8.1	10.5	2.2	2.6	ri	0	0	0.0	5.0	9.5	15.2
4	8.4	10.5	8.1	3.1	ri	0	0	2.0	3.7	6.7	11.5
5	4.0	8.6	2.8	2.5	ri	0	0	2.1	5.8	9.4	15.4
6	3.5	5.9	2.6	2.2	ri	0	0	4.2	3.8	9.2	14.8
7	7.4	11.6	2.0	3.9	ri	0	0	0.0	9.2	19.6	31.0
8	8.3	12.1	7.7	13.9	ri	0	0	0.0	7.6	19.9	31.1
9	7.9	9.9	5.4	2.0	ri	0	0	0.0	4.3	8.7	15.2
10	7.5	10.5	6.0	8.1	ri	0	0	0.3	5.8	11.1	18.3
11	5.8	6.5	3.4	9.1	ri	0	0	2.8	4.6	9.0	15.9
12	8.1	10.6	6.1	1.1	ri	0	0	0.5	3.0	7.4	13.6
13	7.5	8.7	4.2	0.0		0	0	3.9	4.3	8.8	13.5
14	10.1	11.9	7.5	0.4	ri	0	0	1.7	7.7	11.7	21.4
15	9.5	11.6	8.7	0.0		0	0	0.0	5.6	13.2	21.3
16	8.8	10.6	8.1	2.3	ri	0	0	0.0	4.7	10.7	16.3
17	7.9	9.0	7.6	1.3	ri	0	0	0.9	3.8	7.1	11.6
18	6.9	8.0	6.5	0.0		0	0	0.0	2.7	4.2	6.2
19	5.6	7.5	4.7	1.4	ri	0	0	2.0	3.8	12.0	19.7
20	5.3	8.5	4.0	6.1	ri	0	0	0.3	6.6	12.7	21.0
21	3.1	5.9	2.4	6.5	ri	0	0	0.6	6.0	10.3	16.5
22	2.9	4.9	1.3	1.9	sl	0	0	0.0	3.7	10.8	17.9
23	1.9	6.3	1.2	10.1	sl	0	0	0.1	6.8	14.7	22.1
24	0.5	2.0	-0.4	1.7	sl	0	2	0.0	3.5	7.5	13.7
25	-0.6	2.6	-3.6	1.7	sn	0	2	0.0	3.1	8.1	14.0
26	-2.2	2.4	-3.5	3.7	sn	5	4	1.6	3.1	4.9	7.2
27	-1.0	0.6	-3.2	3.3	sn	8	4	0.0	3.7	7.9	11.2
28	0.9	1.9	-2.5	0.1	sl	9	4	0.1	3.8	8.5	14.1
29	-2.8	2.3	-3.6	0.0		9	4	2.8	3.4	7.5	13.7
30	-7.7	-3.0	-9.2			8	4	3.0	1.3	3.6	5.3

Meðalhiti (°C)	4.3
Frávik frá meðaltali 1961 - 1990 (°C)	3.2
Meðalhámarkshiti (°C)	7.0
Meðallágmarkshiti (°C)	2.5
Úrkomumagn (mm)	89.9
Hlutfall úrkomu af meðaltali 1961-1990 (%)	123.8
Meðalvindhraði (m/s)	4.6
Sólskinsstundir (klst)	35.2

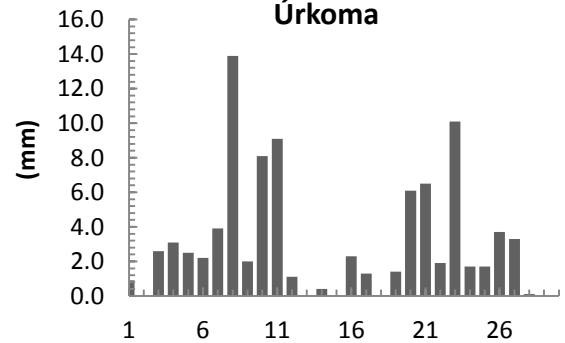
Meðalhiti



Mesti vindur



Úrkoma



Sólskin

