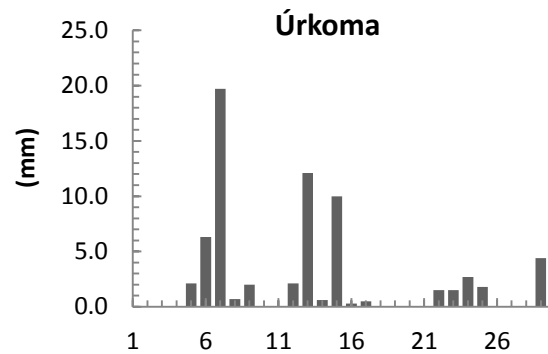
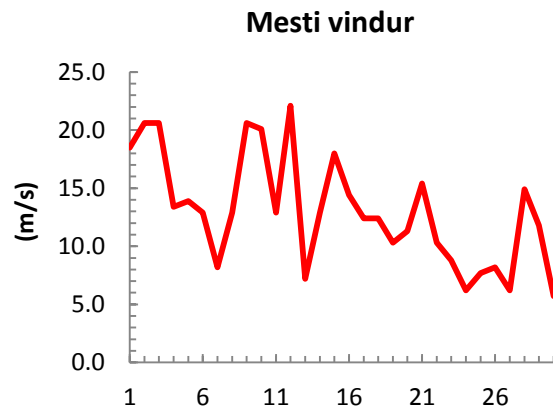
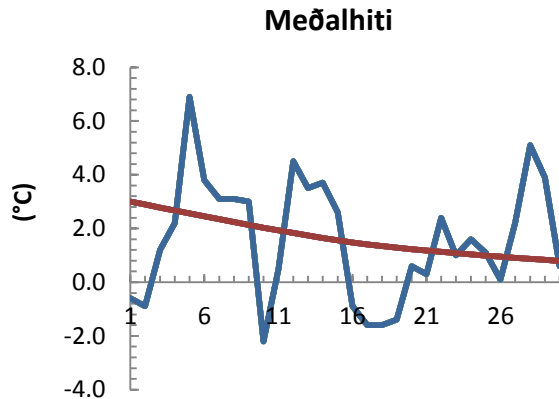


dagur	meðalhiti (°C)	Hámark (°C)	Lágmark (°C)	Úrkoma (mm)	Úrkomutegund	Snjódýpt (cm)	Snjöhula (0-4)	Sólskin (klst)	Meðalvindur (m/s)	Mesti vindur (m/s)	Hviða (m/s)
1	-0.6	5.6	-1.1	0.0		0	0		15.0	18.5	23.7
2	-0.9	0.2	-3.1	0.0		0	0		18.3	20.6	26.3
3	1.2	1.9	-0.1	0.0		0	0		14.9	20.6	27.3
4	2.2	5.1	-1.5	0.0		0	0		5.3	13.4	17.0
5	6.9	8.5	5.0	2.1	ri	0	0		8.6	13.9	19.0
6	3.8	7.9	2.4	6.3	ri	0	0		7.4	12.9	17.0
7	3.1	5.8	2.4	19.7	ri	0	0		3.8	8.2	11.3
8	3.1	5.1	1.4	0.7	ri	0	0		7.7	12.9	17.5
9	3.0	4.7	2.2	2.0	ri	0	0		13.8	20.6	25.2
10	-2.2	2.6	-3.0	0.0		0	0		13.8	20.1	25.7
11	0.5	2.6	-3.7	0.0		0	0		7.2	12.9	19.0
12	4.5	6.5	1.0	2.1	ri	0	0		10.5	22.1	29.3
13	3.5	5.3	2.6	12.1	sl	0	0		4.0	7.2	8.8
14	3.7	4.5	1.6	0.6	ri	0	0		6.0	12.9	20.1
15	2.6	6.8	0.2	10.0	ri	0	0		10.1	18.0	25.2
16	-0.9	2.5	-2.5	0.3	sl	0	2		7.7	14.4	17.5
17	-1.6	2.0	-2.3	0.5	sn	0	2		9.8	12.4	17.0
18	-1.6	0.0	-2.2	0.0		0	2		8.3	12.4	14.9
19	-1.4	0.7	-3.6	0.0		0	2		6.9	10.3	12.9
20	0.6	2.2	-3.3	0.0		0	2		8.1	11.3	15.4
21	0.3	1.3	-0.8	0.0		0	2		11.0	15.4	19.6
22	2.4	4.4	0.3	1.5	ri	0	0		4.0	10.3	11.8
23	1.0	3.1	-1.6	1.5	ri	0	0		3.8	8.8	10.8
24	1.6	3.4	0.9	2.7	sl	0	0		3.7	6.2	8.2
25	1.1	3.4	0.3	1.8	sl	0	0		4.1	7.7	9.8
26	0.1	3.8	-2.3	0.0		0	0		4.0	8.2	10.3
27	2.2	3.1	-2.3	0.0		0	0		4.1	6.2	8.2
28	5.1	9.1	2.3	0.0		0	0		10.6	14.9	21.1
29	3.9	7.6	3.0	4.4	ri	0	0		3.8	11.8	16.0
30	0.6	4.0	0.0	13.3	ri	0	0		3.3	5.7	6.7



Meðalhiti (°C)	1.6
Frávik frá meðaltali 1961 - 1990 (°C)	0.0
Meðalhámarkshiti (°C)	4.1
Meðallágmarkshiti (°C)	-0.3
Úrkomumagn (mm)	81.6
Hlutfall úrkomu af meðaltali 1961-1990 (%)	82.3
Meðalvindhraði (m/s)	8.0

