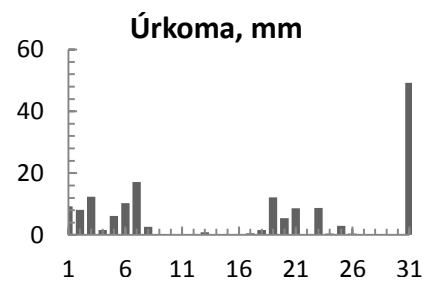
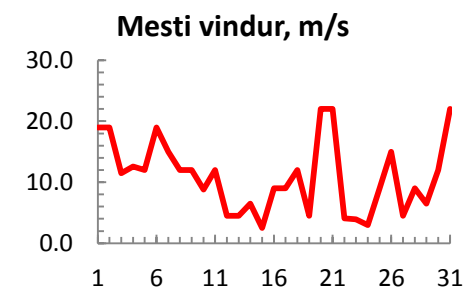
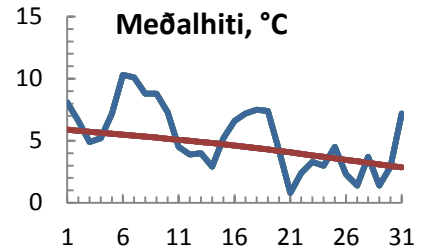


dagur	meðalhiti (°C)	Hámark (°C)	Lágmark (°C)	Úrkoma (mm)	Úrkomutegund	Snjódýpt (cm)	Snjóhula (0-4)	Sólskin (klst)	Meðalvindur (m/s)	Mesti vindur (m/s)	Hviða (m/s)
1	8.1	8.6	5.6	9.3	ri	0	0	0	12.5	19.0	
2	6.6	9.0	4.8	8.1	ri	0	0	0	7.0	19.0	
3	4.9	8.5	2.3	12.4	ri	0	0	0	6.1	11.5	
4	5.2	7.9	-1.2	1.6	ri	0	0	0	6.0	12.6	
5	7.2	8.7	4.2	6.1	ri	0	0	0	4.3	12.0	
6	10.3	11.0	6.6	10.3	ri	0	0	0	15.6	19.0	
7	10.1	12.6	9.6	17.1	ri	0	0	0	8.9	15.0	
8	8.8	10.5	8.2	2.6	ri	0	0	0	5.6	12.0	
9	8.8	9.6	7.5	0.1	ri	0	0	0	8.4	12.0	
10	7.3	10.0	6.8			0	0	0	5.3	8.8	
11	4.5	7.0	4.0			0	0	0	4.9	12.0	
12	3.9	5.6	0.6			0	0	0	1.9	4.5	
13	4.0	6.0	4.0	0.9	ri	0	0	0	1.4	4.5	
14	2.9	7.0	-0.2	0.1	ri	0	0	0	2.6	6.5	
15	5.2	7.0	2.2	0.1	ri	0	0	0	1.0	2.5	
16	6.6	8.0	5.0	0.2	ri	0	0	0	5.3	9.0	
17	7.2	7.6	6.4	0.6	ri	0	0	0	5.3	9.0	
18	7.5	8.0	6.4	1.6	ri	0	0	0	7.9	12.0	
19	7.4	9.6	6.2	12.2	ri	0	0	0	2.4	4.5	
20	4.2	7.5	3.8	5.4	ri	0	0	0	11.7	22.0	
21	0.8	4.8	-0.8	8.6	ri	0	0	0	10.2	22.0	
22	2.4	5.5	-2.4			0	0	0	2.8	4.1	
23	3.3	5.2	0.0	8.7	sl	0	0	0	1.5	3.9	
24	3.0	7.5	1.2	0.5	ri	0	0	0	2.4	3.0	
25	4.5	5.0	2.6	2.9	ri	0	0	0	6.7	9.0	
26	2.3	5.0	1.6	0.4	ri	0	0	0	6.9	15.0	
27	1.4	3.8	-1.0			0	0	0	3.0	4.5	
28	3.7	7.2	-0.2			0	0	0	5.6	9.0	
29	1.4	4.2	1.0			0	0	0	3.8	6.5	
30	2.9	4.0	-1.6			0	0	0	7.9	12.0	
31	7.2	8.5	3.0	49.2	ri	0	0	0	10.8	22.0	



Meðalhiti (°C)	5.3
Frávik frá meðaltali 1961 - 1990 (°C)	0.8
Meðalhámarkshiti (°C)	7.4
Meðallágmarkshiti (°C)	3.1
Úrkomumagn (mm)	159.0
Hlutfall úrkomu af meðaltali 1961-1990 (%)	101.0
Meðalvindhraði (m/s)	6.0