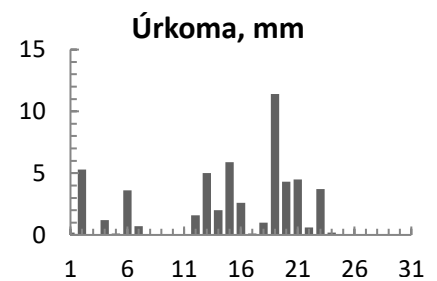
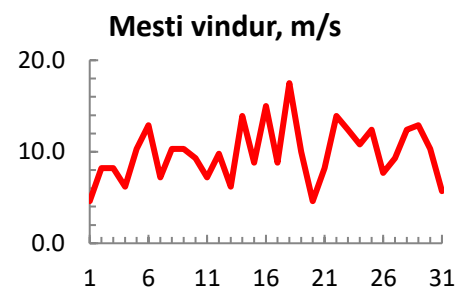
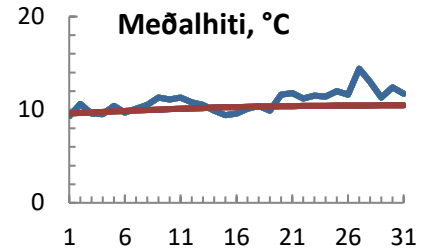


dagur	meðalhiti (°C)	Hámark (°C)	Lágmark (°C)	Úrkoma (mm)	Úrkomutegund	Snjódýpt (cm)	Snjóhula (0-4)	Sólskin (klst)	Meðalvindur (m/s)	Mesti vindur (m/s)	Hviða (m/s)
1	9.3	12.5	6.3	0.2	ri	0	0		1.7	4.6	5.1
2	10.6	13.3	8.2	5.3	ri	0	0		4.6	8.2	10.3
3	9.6	12.6	8.8			0	0		4.2	8.2	10.3
4	9.5	11.5	7.8	1.2	ri	0	0		3.8	6.2	7.7
5	10.4	12.7	9.2	0.1	ri	0	0		7.4	10.3	14.4
6	9.7	11.5	9.7	3.6	ri	0	0		9.0	12.9	16.5
7	10.1	13.2	7.2	0.7	ri	0	0		3.9	7.2	10.3
8	10.5	13.2	8.2	0.0		0	0		6.2	10.3	12.4
9	11.3	15.3	8.0			0	0		7.5	10.3	12.9
10	11.1	15.3	7.0			0	0		5.8	9.3	11.8
11	11.3	15.6	7.4			0	0		4.2	7.2	9.8
12	10.8	12.6	9.8	1.6	ri	0	0		6.3	9.8	13.4
13	10.5	12.6	9.4	5.0	ri	0	0		4.2	6.2	7.7
14	9.9	12.0	8.6	2.0	ri	0	0		7.0	13.9	19.6
15	9.4	11.8	8.3	5.9	ri	0	0		5.4	8.8	10.8
16	9.6	12.5	6.2	2.6	ri	0	0		5.6	15.0	20.0
17	10.1	11.9	9.0	0.1	ri	0	0		6.3	8.8	11.8
18	10.4	12.2	9.6	1.0	ri	0	0		8.8	17.5	25.2
19	9.9	12.4	8.1	11.4	ri	0	0		3.4	10.0	14.0
20	11.6	12.8	9.6	4.3	ri	0	0		2.1	4.6	5.7
21	11.8	13.3	10.7	4.5	ri	0	0		4.1	8.2	11.8
22	11.2	13.3	11.0	0.6	ri	0	0		10.6	13.9	18.5
23	11.5	12.5	10.9	3.7	ri	0	0		9.5	12.4	16.5
24	11.4	12.5	11.2	0.2	ri	0	0		7.9	10.8	14.4
25	12.0	13.7	10.7	0.0		0	0		9.1	12.4	18.0
26	11.6	14.6	10.2			0	0		3.7	7.7	9.3
27	14.4	20.5	9.5	0.0		0	0		5.2	9.3	11.8
28	13.0	19.6	11.8			0	0		6.6	12.4	16.5
29	11.3	16.0	9.9			0	0		6.7	12.9	16.0
30	12.4	16.1	9.8			0	0		6.6	10.3	12.9
31	11.7	15.8	9.2			0	0		3.6	5.7	7.2



Meðalhiti (°C)	10.9
Frávik frá meðaltali 1961 - 1990 (°C)	0.7
Meðalhámarkshiti (°C)	13.7
Meðallágmarkshiti (°C)	9.1
Úrkomumagn (mm)	54.0
Hlutfall úrkomu af meðaltali 1961-1990 (%)	82.3
Meðalvindhraði (m/s)	5.8