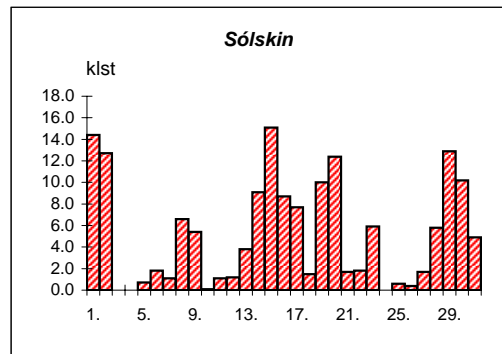
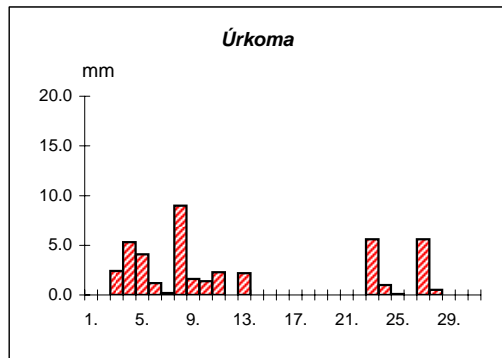
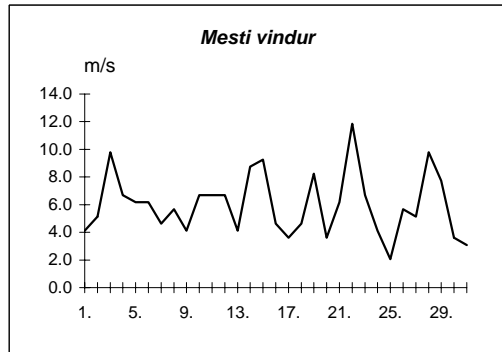
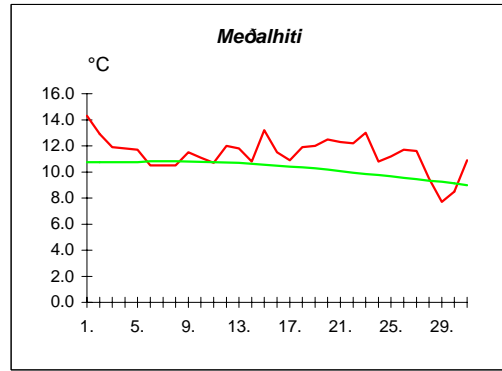
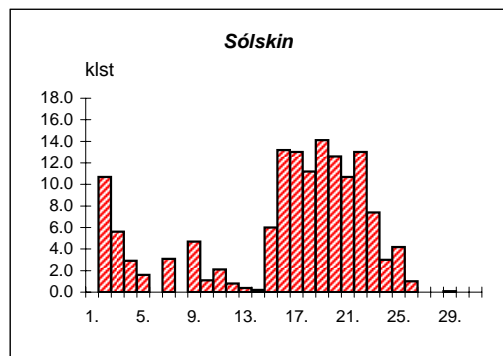
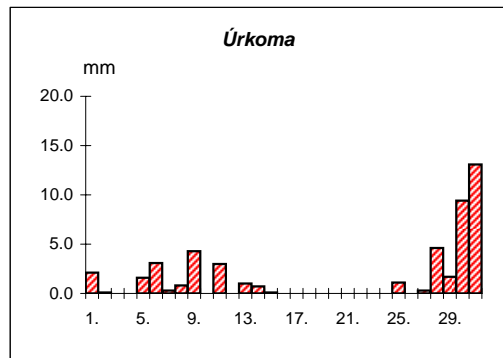
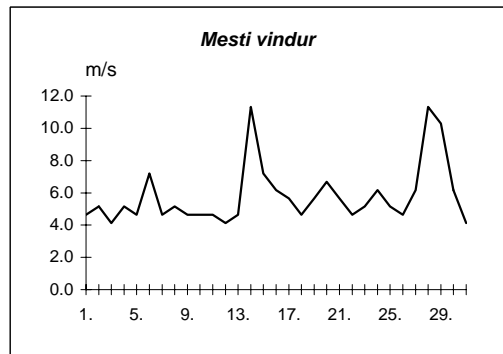
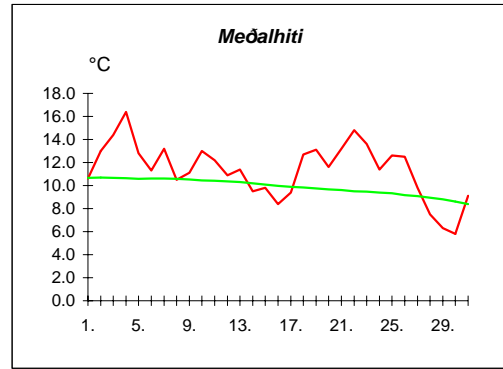


Dags	Meðalhiti (°C)	Hámark (°C)	Lágmark (°C)	Úrkoma (mm)	Úrkomutegund	Snjódýpt (cm)	Snjóhula (0-4)	Sólskin(klst)	Meðalvindur (m/s)	Mesti vindur (m/s)	Hviða (m/s)
1.	14.3	19.0	9.1	0.0			0	14.4	1.8	4.1	6.7
2.	12.9	19.2	10.4	---			0	12.7	2.5	5.1	7.7
3.	11.9	13.5	10.6	2.4	ri		0	0.0	4.4	9.8	14.4
4.	11.8	13.4	10.4	5.3	ri		0	0.0	3.3	6.7	11.8
5.	11.7	15.0	9.8	4.1	ri		0	0.7	3.1	6.2	10.3
6.	10.5	13.4	9.6	1.2	ri		0	1.8	3.8	6.2	11.3
7.	10.5	12.6	7.8	0.2	ri		0	1.1	2.5	4.6	6.7
8.	10.5	12.8	8.9	9.0	ri		0	6.6	2.6	5.7	8.2
9.	11.5	14.6	8.1	1.6	ri		0	5.4	1.8	4.1	6.7
10.	11.1	12.8	10.4	1.4	ri		0	0.1	4.5	6.7	10.8
11.	10.7	12.6	8.7	2.3	ri		0	1.1	4.2	6.7	11.3
12.	12.0	15.4	9.3	0.0			0	1.2	3.3	6.7	10.3
13.	11.8	15.5	11.4	2.2	ri		0	3.8	2.6	4.1	6.7
14.	10.8	13.0	9.3	0.0			0	9.1	5.1	8.8	14.9
15.	13.2	16.7	8.9	0.0			0	15.1	4.8	9.3	14.4
16.	11.5	16.5	9.5	---			0	8.7	2.0	4.6	6.2
17.	10.9	13.4	8.0	---			0	7.7	1.4	3.6	5.1
18.	11.9	14.4	9.2	---			0	1.5	1.9	4.6	7.7
19.	12.0	14.4	10.1	---			0	10.0	5.4	8.2	13.4
20.	12.5	16.6	8.7	---			0	12.4	2.3	3.6	6.7
21.	12.3	15.3	9.6	---			0	1.7	3.4	6.2	9.3
22.	12.2	13.9	10.8	0.0			0	1.8	6.6	11.8	17.5
23.	13.0	17.0	10.7	5.6	ri		0	5.9	4.3	6.7	9.8
24.	10.8	14.8	9.4	1.0	ri		0	0.0	1.5	4.1	6.7
25.	11.2	13.3	8.3	0.1	ri		0	0.6	1.1	2.1	3.6
26.	11.7	15.0	9.0	0.0			0	0.4	1.7	5.7	8.8
27.	11.6	14.2	9.9	5.6	ri		0	1.7	2.3	5.1	7.7
28.	9.5	14.1	6.8	0.5	ri		0	5.8	4.1	9.8	15.4
29.	7.7	11.3	4.8	---			0	12.9	4.4	7.7	18.5
30.	8.5	13.6	2.7	---			0	10.2	2.2	3.6	6.2
31.	10.9	14.3	6.2	---			0	4.9	1.8	3.1	4.6

Meðalhiti	=	11.4 °C
Frávik frá meðaltali 1931-60	=	0.6 °C
Meðalhámarkshiti	=	14.6 °C
Meðallágmarkshiti	=	8.9 °C
Úrkomumagn	=	42.5 mm
Hlutfall úrkomu af meðaltali 1931-60	=	64.0 %
Meðalvindhraði	=	3.1 m/s
Sólskinsstundir	=	159.3 klst

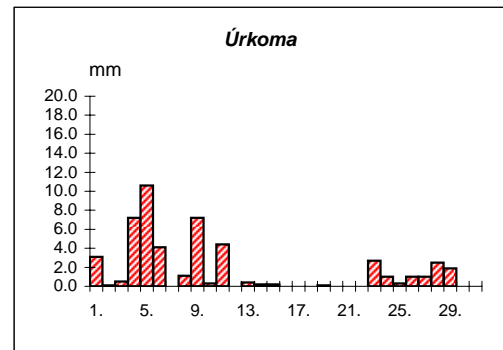
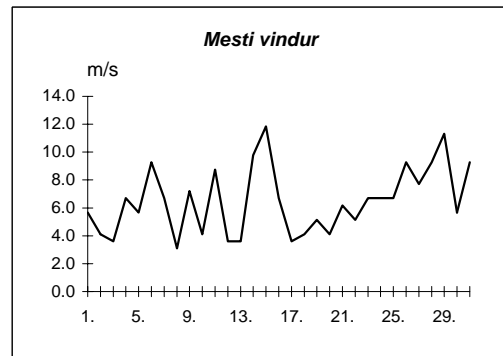
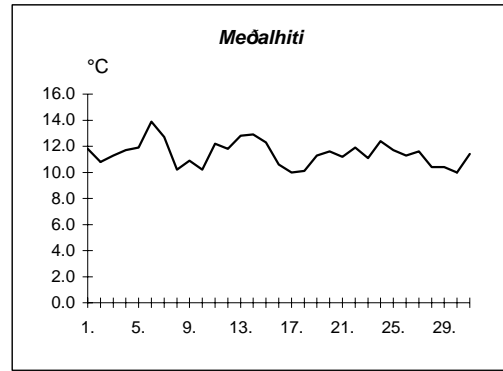


Dags	Meðalhiti (°C)	Hámark (°C)	Lágmark (°C)	Úrkoma (mm)	Úrkomutegund	Snjódýpt (cm)	Snjöhula (0-4)	Sólskin(klst)	Meðalvindur (m/s)	Mesti vindur (m/s)	Hviða (m/s)
1.	10.6	12.2	9.1	2.1	ri		0	0.0	2.4	4.6	7.2
2.	13.0	17.0	10.1	0.1	ri		0	10.7	1.7	5.1	7.2
3.	14.4	18.2	10.7	---			0	5.6	1.4	4.1	6.2
4.	16.4	23.0	12.3	0.0			0	2.9	2.2	5.1	8.8
5.	12.8	18.7	12.0	1.6	ri		0	1.6	2.5	4.6	6.7
6.	11.3	13.8	10.3	3.1	ri		0	0.0	2.1	7.2	10.8
7.	13.2	18.0	7.2	0.3	ri		0	3.1	2.6	4.6	12.4
8.	10.5	16.4	10.1	0.8	ri		0	0.0	2.8	5.1	8.8
9.	11.1	13.4	9.1	4.3	ri		0	4.7	2.1	4.6	6.7
10.	13.0	16.9	8.7	---			0	1.1	3.1	4.6	8.8
11.	12.2	15.7	10.4	3.0	ri		0	2.1	2.5	4.6	7.7
12.	10.9	13.5	9.3	---			0	0.8	1.6	4.1	6.2
13.	11.4	14.0	9.9	1.0	ri		0	0.4	1.8	4.6	6.2
14.	9.5	11.8	8.9	0.7	ri		0	0.2	5.9	11.3	16.5
15.	9.8	12.2	8.5	0.1	ri		0	6.0	3.3	7.2	9.8
16.	8.4	13.2	3.3	---			0	13.2	1.2	6.2	9.8
17.	9.4	14.6	3.3	---			0	13.0	1.9	5.7	7.7
18.	12.7	18.0	2.9	---			0	11.2	2.0	4.6	6.7
19.	13.1	16.2	10.4	---			0	14.1	2.8	5.7	8.2
20.	11.6	16.1	2.2	---			0	12.6	1.9	6.7	9.8
21.	13.2	18.4	7.7	---			0	10.7	2.7	5.7	8.8
22.	14.8	21.7	8.8	---			0	13.0	2.6	4.6	8.2
23.	13.6	20.5	9.6	---			0	7.4	2.7	5.1	8.2
24.	11.4	15.2	7.9	---			0	3.0	2.6	6.2	9.3
25.	12.6	16.4	10.6	1.1	ri		0	4.2	2.8	5.1	8.2
26.	12.5	16.6	9.6	---			0	1.0	2.0	4.6	12.9
27.	9.8	14.6	9.2	0.3	ri		0	0.0	3.0	6.2	9.8
28.	7.5	9.8	6.1	4.6	ri		0	0.0	7.2	11.3	18.0
29.	6.3	7.8	5.4	1.7	ri		0	0.1	6.9	10.3	15.4
30.	5.8	7.4	3.6	9.4	ri		0	0.0	1.3	6.2	9.8
31.	9.1	10.7	6.9	13.1	ri		0	0.0	1.8	4.1	6.7



Meðalhiti	=	11.4 °C
Frávik frá meðaltali 1931-60	=	1.1 °C
Meðalhámarkshiti	=	15.2 °C
Meðallágmarkshiti	=	8.2 °C
Úrkomumagn	=	47.3 mm
Hlutfall úrkomu af meðaltali 1931-60	=	121.0 %
Meðalvindhraði	=	2.7 m/s
Sólskinsstundir	=	142.7 klst

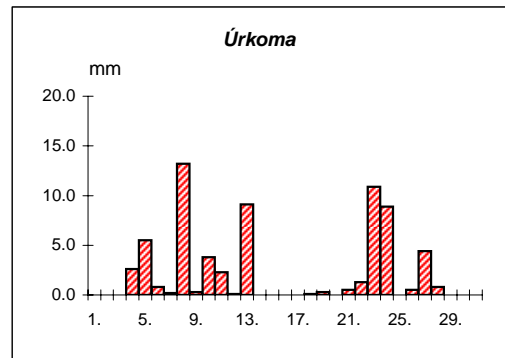
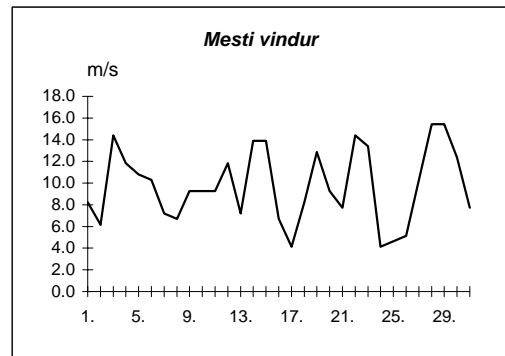
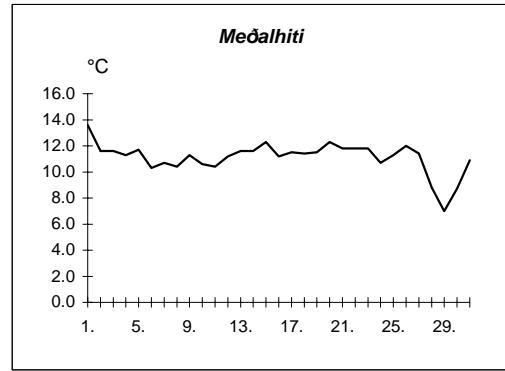
Dags	Meðalhiti (°C)	Hámark (°C)	Lágmark (°C)	Úrkoma (mm)	Úrkomutegund	Snjódýpt (cm)	Snjöhula (0-4)	Sólskin(klst)	Meðalvindur (m/s)	Mesti vindur (m/s)	Hviða (m/s)
1.	11.8	15.3	10.1	3.1	ri		0		2.3	5.7	6.7
2.	10.8	12.2	10.3	0.1	ri		0		2.0	4.1	5.7
3.	11.3	13.7	8.3	0.5	ri		0		1.3	3.6	4.6
4.	11.7	13.5	10.8	7.2	ri		0		3.3	6.7	8.8
5.	11.9	15.0	9.8	10.6	ri		0		2.4	5.7	7.2
6.	13.9	19.6	11.1	4.1	ri		0		3.4	9.3	16.5
7.	12.7	16.3	10.2	0.0			0		2.5	6.7	9.8
8.	10.2	15.1	10.0	1.1	ri		0		1.8	3.1	4.6
9.	10.9	13.9	8.7	7.2	ri		0		1.8	7.2	10.3
10.	10.2	12.2	8.8	0.3	ri		0		1.8	4.1	5.1
11.	12.2	16.9	8.0	4.4	ri		0		3.0	8.8	12.9
12.	11.8	15.2	9.0	---			0		1.7	3.6	6.2
13.	12.8	15.7	10.5	0.4	ri		0		0.8	3.6	4.6
14.	12.9	16.7	10.7	0.2	ri		0		3.6	9.8	14.9
15.	12.3	17.2	10.7	0.2	ri		0		4.9	11.8	19.0
16.	10.6	15.0	5.5	---			0		2.6	6.7	8.8
17.	10.0	14.3	4.6	---			0		1.6	3.6	5.1
18.	10.1	14.0	6.0	0.0			0		2.2	4.1	5.7
19.	11.3	14.1	8.6	0.1	ri		0		3.3	5.1	8.8
20.	11.6	14.7	9.0	---			0		1.0	4.1	5.7
21.	11.2	14.5	7.0	---			0		2.5	6.2	9.3
22.	11.9	14.3	10.1	---			0		2.2	5.1	6.7
23.	11.1	13.2	9.9	2.7	ri		0		3.3	6.7	8.8
24.	12.4	16.2	10.6	1.0	ri		0		2.0	6.7	8.8
25.	11.7	14.7	9.7	0.3	ri		0		2.1	6.7	8.2
26.	11.3	12.5	10.3	1.0	ri		0		4.2	9.3	11.8
27.	11.6	13.6	10.2	1.0	ri		0		2.3	7.7	9.8
28.	10.4	12.5	9.9	2.5	ri		0		3.1	9.3	13.4
29.	10.4	13.0	8.1	1.9	ri		0		6.4	11.3	17.0
30.	10.0	13.6	5.0	---			0		2.0	5.7	9.3
31.	11.4	15.6	8.2	---			0		4.1	9.3	17.0



Meðalhiti	=	11.4 °C
Meðalhámarkshiti	=	14.7 °C
Meðallágmarkshiti	=	9.0 °C
Úrkomumagn	=	49.9 mm
Meðalvindhraði	=	2.6 m/s

Útgefandi : **Veðurstofa Íslands**
 Heimilisfang : **Bústaðavegur 9**
150 Reykjavík

Dags	Meðalhiti (°C)	Hámark (°C)	Lágmark (°C)	Úrkoma (mm)	Úrkomutegund	Snjódýpt (cm)	Snjöhula (0-4)	Sólskin(klst)	Meðalvindur (m/s)	Mesti vindur (m/s)	Hviða (m/s)
1.	13.6	17.2	10.3	0.0			0		4.1	8.2	11.3
2.	11.6	17.4	10.6	---			0		4.1	6.2	8.8
3.	11.6	12.3	10.8	0.0			0		9.7	14.4	19.6
4.	11.3	12.0	10.8	2.6	ri		0		6.2	11.8	17.5
5.	11.7	14.4	9.8	5.5	ri		0		6.6	10.8	13.4
6.	10.3	14.0	9.4	0.8	ri		0		6.8	10.3	13.4
7.	10.7	13.4	8.7	0.2	ri		0		4.1	7.2	9.3
8.	10.4	12.1	8.4	13.2	ri		0		3.8	6.7	8.8
9.	11.3	13.3	9.3	0.3	ri		0		3.9	9.3	12.4
10.	10.6	11.7	9.4	3.8	ri		0		7.0	9.3	12.9
11.	10.4	12.4	9.0	2.3	ri		0		5.5	9.3	12.9
12.	11.2	12.8	9.1	0.1	ri		0		6.2	11.8	15.4
13.	11.6	14.4	10.8	9.1	ri		0		3.8	7.2	9.8
14.	11.6	13.7	9.9	0.0			0		8.4	13.9	18.5
15.	12.3	15.9	9.0	---			0		9.1	13.9	18.5
16.	11.2	15.7	9.1	---			0		4.2	6.7	8.8
17.	11.5	14.3	9.3	---			0		2.1	4.1	5.7
18.	11.4	13.1	10.6	0.1	ri		0		5.1	8.2	10.8
19.	11.5	14.2	10.2	0.3	ri		0		9.2	12.9	17.5
20.	12.3	14.7	9.6	0.0			0		5.7	9.3	12.4
21.	11.8	14.0	10.4	0.5	ri		0		5.7	7.7	10.3
22.	11.8	13.3	11.0	1.3	ri		0		11.1	14.4	20.6
23.	11.8	12.8	10.8	10.9	ri		0		8.1	13.4	19.0
24.	10.7	12.8	8.9	8.9	ri		0		2.1	4.1	5.1
25.	11.3	12.7	9.9	0.0			0		3.0	4.6	6.2
26.	12.0	13.5	10.6	0.5	ri		0		3.0	5.1	6.7
27.	11.4	14.1	10.2	4.4	ri		0		4.3	10.3	13.4
28.	8.8	14.2	8.1	0.8	ri		0		11.4	15.4	19.6
29.	7.0	9.7	5.9	---			0		12.7	15.4	19.0
30.	8.7	12.0	5.8	---			0		5.4	12.4	14.9
31.	10.9	13.5	8.0	---			0		3.9	7.7	10.3



Meðalhiti	=	11.1 °C
Frávik frá meðaltali 1931-60	=	0.7 °C
Meðalhámarkshiti	=	13.6 °C
Meðallágmarkshiti	=	9.5 °C
Úrkomumagn	=	65.6 mm
Hlutfall úrkomu af meðaltali 1931-60	=	78.0 %
Meðalvindhraði	=	6.0 m/s