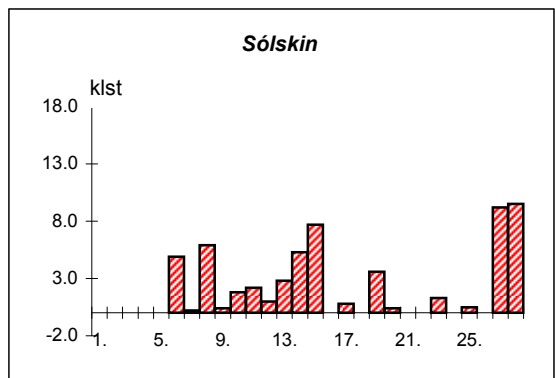
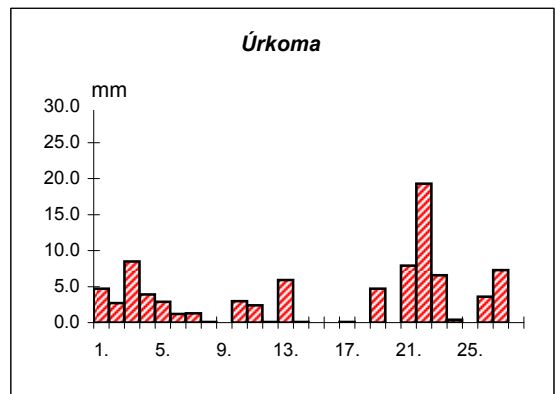
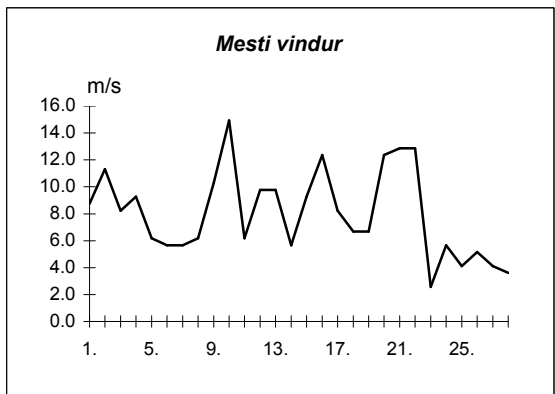
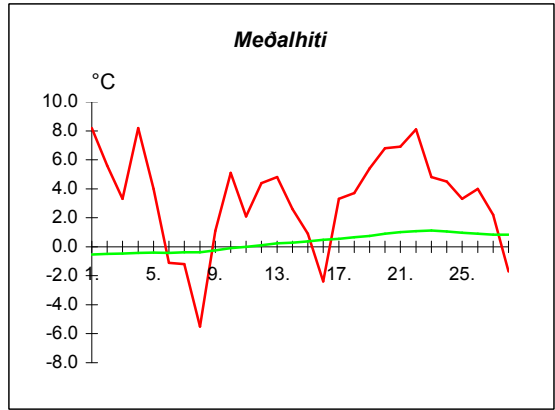
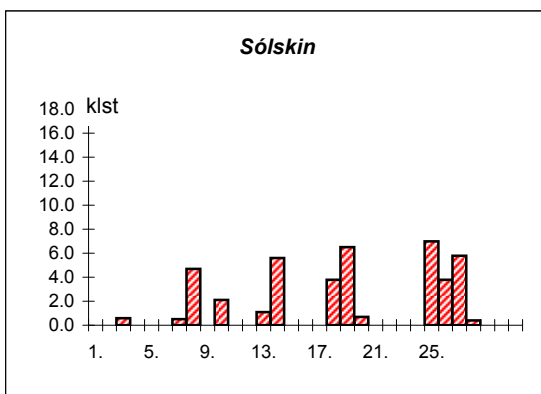
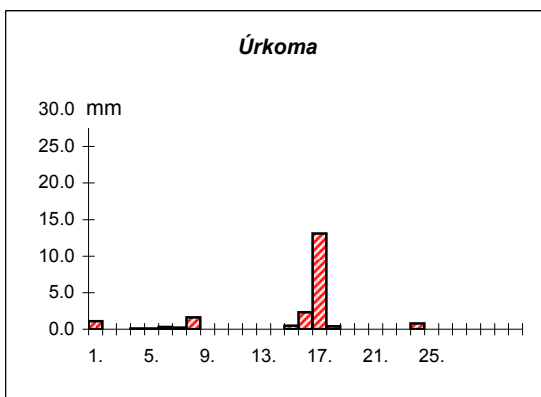
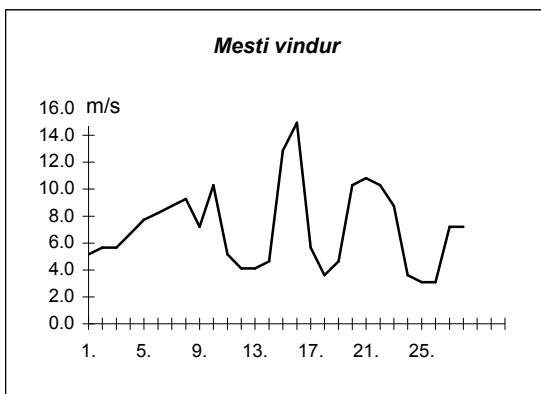
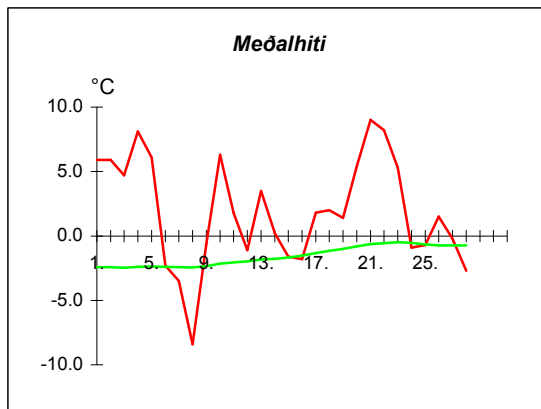


Dags	Meðalhiti (°C)	Hámark (°C)	Lágmark (°C)	Úrkoma (mm)	Úrkomutegund	Snjódýpt (cm)	Snjóhula (0-4)	Sólskin(klst)	Meðalvindur (m/s)	Mesti vindur (m/s)	Hviða (m/s)
1.	8.2	9.2	4.8	4.7	ri		0	0.0	6.2	8.8	13.9
2.	5.6	9.3	5.5	2.7	ri		0	0.0	6.0	11.3	16.0
3.	3.3	5.7	0.7	8.5	sl		0	0.0	4.0	8.2	11.8
4.	8.2	9.0	3.6	3.9	sl		0	0.0	6.5	9.3	14.4
5.	4.0	9.0	2.4	2.9	ri		0	0.0	3.4	6.2	9.3
6.	-1.1	2.5	-2.3	1.2	ri		0	4.9	2.0	5.7	10.8
7.	-1.2	0.0	-2.4	1.3	sn	3	4	0.2	4.1	5.7	9.3
8.	-5.5	-1.3	-6.8	0.1	sn	3	4	5.9	2.1	6.2	9.8
9.	1.1	5.0	-7.6	---		2	4	0.4	4.5	10.3	17.0
10.	5.1	7.7	1.9	3.0	sl		0	1.8	8.1	14.9	21.6
11.	2.1	4.8	0.5	2.4	ri		0	2.2	3.6	6.2	9.3
12.	4.4	6.4	0.8	0.1	sl		0	1.0	6.8	9.8	16.0
13.	4.8	7.5	3.9	5.9	sl		0	2.8	2.7	9.8	16.0
14.	2.6	6.0	0.0	0.1	ri		0	5.3	3.3	5.7	8.8
15.	0.9	4.3	0.0	---			0	7.7	4.6	9.3	14.9
16.	-2.4	0.2	-4.6	0.0			0	0.0	8.7	12.4	22.1
17.	3.3	4.6	-2.7	0.1	sn		0	0.8	3.3	8.2	12.9
18.	3.7	5.3	1.4	0.0			0	0.0	2.9	6.7	11.3
19.	5.4	7.1	3.7	4.7	ri		0	3.6	3.0	6.7	8.8
20.	6.8	9.3	4.2	---			0	0.4	7.4	12.4	19.0
21.	6.9	9.3	4.4	7.9	ri		0	0.0	6.2	12.9	19.0
22.	8.1	9.5	3.3	19.3	ri		0	0.0	8.8	12.9	21.6
23.	4.8	8.3	4.1	6.6	ri		0	1.3	1.0	2.6	4.1
24.	4.5	6.5	2.7	0.4	ri		0	0.0	3.0	5.7	8.2
25.	3.3	6.0	2.4	0.0			0	0.5	2.6	4.1	6.7
26.	4.0	6.7	1.5	3.6	sl		0	0.0	2.7	5.1	7.2
27.	2.2	6.0	-0.5	7.3	ri		0	9.2	2.0	4.1	6.7
28.	-1.7	4.0	-3.6	0.0			0	9.5	1.5	3.6	5.7



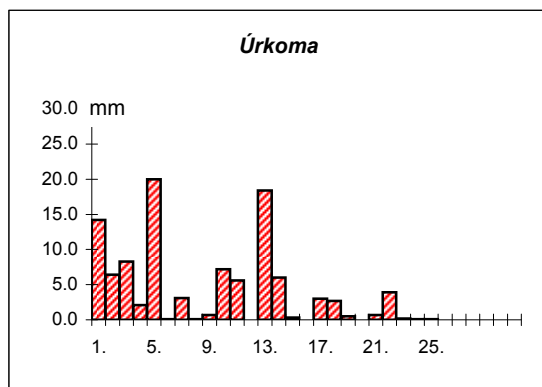
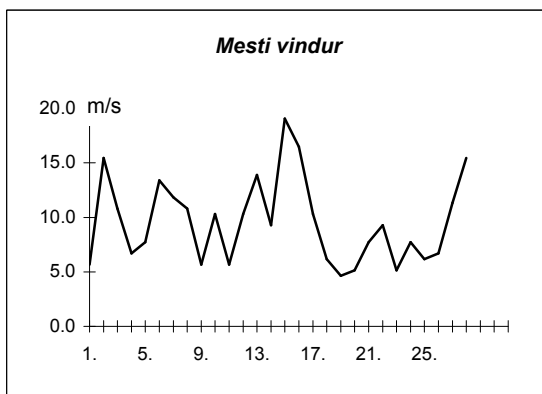
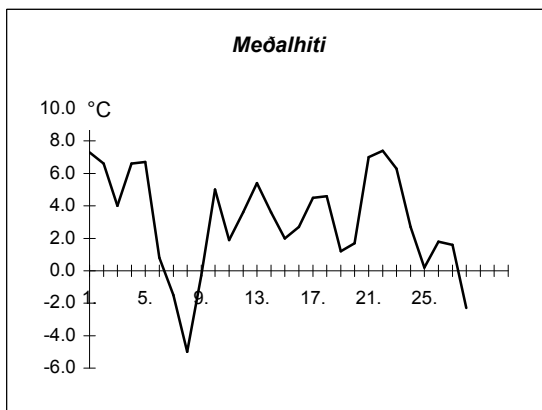
Meðalhiti	=	3.3 °C
Frávik frá meðaltali 1931-60	=	3.4 °C
Meðalhámarkshiti	=	6.0 °C
Meðallágmarkshiti	=	0.8 °C
Úrkomumagn	=	86.7 mm
Hlutfall úrkomu af meðaltali 1931-60	=	133.0 %
Meðalvindhraði	=	4.3 m/s
Sólskinsstundir	=	57.5 klst

Dags	Meðalhiti (°C)	Hámark (°C)	Lágmark (°C)	Úrkoma (mm)	Úrkomutegund	Snjóþýpt (cm)	Snjóhula (0-4)	Sólskin(klst)	Meðalvindur (m/s)	Mesti vindur (m/s)	Hviða (m/s)
1.	5.9	7.6	1.1	1.1	ri		0	0.0	2.4	5.1	8.8
2.	5.9	9.2	5.1	---			0	0.0	2.0	5.7	9.8
3.	4.7	6.2	2.0	---			0	0.6	4.0	5.7	11.8
4.	8.1	10.6	3.9	0.1	ri		0	0.0	3.6	6.7	12.4
5.	6.1	10.8	2.8	0.1	ri		0	0.0	3.6	7.7	12.4
6.	-2.3	3.0	-2.7	0.3	ri		0	0.0	3.8	8.2	11.3
7.	-3.5	-1.5	-4.0	0.2	sn		0	0.5	3.2	8.8	12.9
8.	-8.4	-3.0	-9.8	1.6	sn		0	4.7	2.1	9.3	12.9
9.	-0.6	3.8	-11.5	---			0	0.0	2.3	7.2	11.8
10.	6.3	10.5	2.9	0.0			0	2.1	3.9	10.3	18.0
11.	1.8	8.3	1.8	---			0	0.0	1.8	5.1	9.8
12.	-1.1	3.4	-5.3	---			0	0.0	1.8	4.1	7.2
13.	3.5	6.5	-0.5	0.0			0	1.1	1.4	4.1	7.7
14.	0.2	3.0	-4.0	---			0	5.6	1.7	4.6	6.7
15.	-1.6	0.8	-2.4	0.5	sn	1	4	0.0	6.9	12.9	20.1
16.	-1.8	-0.4	-5.2	2.3	sn	6	4	0.0	7.4	14.9	22.1
17.	1.8	3.1	-1.5	13.1	sl	7	4	0.0	3.3	5.7	8.8
18.	2.0	5.3	1.0	0.4	ri	5	2	3.8	1.1	3.6	6.2
19.	1.4	5.2	-1.6	---		5	2	6.5	1.8	4.6	7.7
20.	5.4	7.5	1.3	---			0	0.7	5.3	10.3	20.1
21.	9.0	11.6	6.6	---			2	0.0	6.2	10.8	17.0
22.	8.2	10.9	2.6	0.0			0	0.0	6.6	10.3	19.6
23.	5.3	10.0	4.5	---			0	0.0	2.9	8.8	16.0
24.	-0.9	5.2	-2.6	0.8	ri		0	0.0	1.2	3.6	5.7
25.	-0.7	4.4	-3.7	---			0	7.0	0.8	3.1	4.6
26.	1.5	7.6	-3.1	---			0	3.8	1.5	3.1	5.7
27.	-0.2	4.7	-2.1	---			0	5.8	2.1	7.2	10.8
28.	-2.7	0.0	-2.8	---			0	0.4	3.5	7.2	10.8



Meðalhiti	=	1.9 °C
Frávik frá meðaltali 1931-60	=	3.5 °C
Meðalhámarkshiti	=	5.5 °C
Meðallágmarkshiti	=	-1.0 °C
Úrkomumagn	=	20.5 mm
Hlutfall úrkomu af meðaltali 1931-60	=	49.0 %
Meðalvindhraði	=	3.1 m/s
Sólskinsstundir	=	42.6 klst

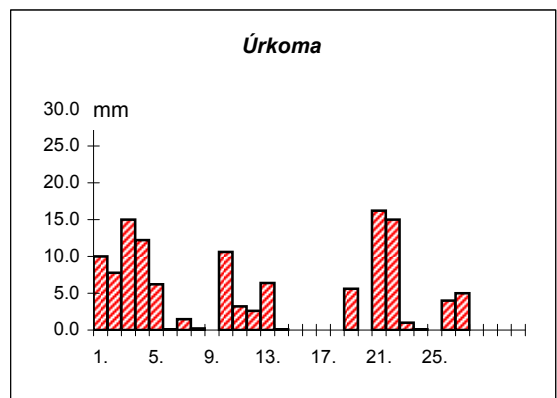
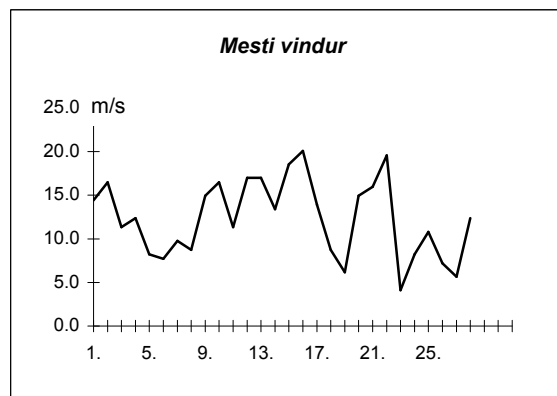
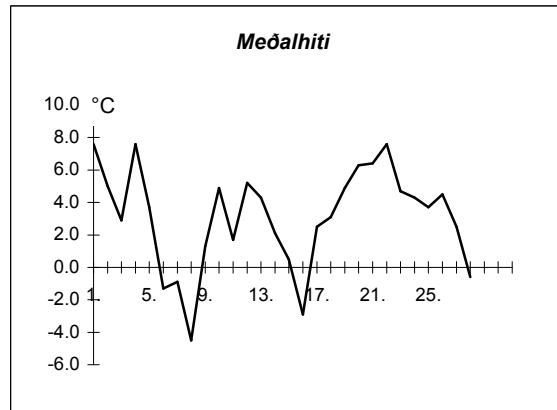
Dags	Meðalhiti (°C)	Hámark (°C)	Lágmark (°C)	Úrkoma (mm)	Úrkomutegund	Snjóþýpt (cm)	Snjóhula (0-4)	Sólskin(klíst)	Meðalvindur (m/s)	Mesti vindur (m/s)	Hviða (m/s)
1.	7.3	7.9	5.2	14.2	ri		0		2.9	5.7	7.7
2.	6.6	8.2	5.1	6.4	ri		0		4.2	15.4	19.6
3.	4.0	8.6	2.2	8.3	ri		0		2.8	10.8	10.3
4.	6.6	8.0	2.2	2.1	ri		0		2.8	6.7	8.8
5.	6.7	8.0	5.2	20.0	ri		0		3.4	7.7	7.2
6.	0.8	7.2	-0.4	0.1	ri		0		5.1	13.4	18.0
7.	-1.5	1.3	-3.8	3.1	sl	1	4		4.9	11.8	16.5
8.	-5.0	-2.0	-6.9	0.1	sn	1	4		4.6	10.8	14.4
9.	-0.3	1.6	-6.7	0.7	sn	1	4		2.0	5.7	8.2
10.	5.0	7.5	0.3	7.2	sl		0		4.2	10.3	14.4
11.	1.9	6.5	-0.4	5.6	ri		0		2.5	5.7	8.2
12.	3.6	5.4	-0.6	0.0			0		5.2	10.3	14.4
13.	5.4	7.4	2.4	18.4	ri		0		4.2	13.9	18.5
14.	3.6	5.6	1.2	6.0	ri		0		4.3	9.3	11.8
15.	2.0	6.1	-0.2	0.3	ri		0		8.8	19.0	27.8
16.	2.7	5.3	-2.1	---			0		6.7	16.5	25.2
17.	4.5	5.9	2.4	3.0	ri		0		6.1	10.3	16.5
18.	4.6	7.0	2.9	2.7	ri		0		3.0	6.2	8.2
19.	1.2	6.5	-0.9	0.5	ri		0		1.9	4.6	5.1
20.	1.7	5.3	-2.8	0.0			0		1.8	5.1	7.2
21.	7.0	8.0	2.8	0.7	ri		0		3.3	7.7	10.3
22.	7.4	8.3	6.9	3.9	ri		0		4.6	9.3	13.4
23.	6.3	8.6	5.9	0.2	ri		0		1.8	5.1	7.2
24.	2.7	7.0	2.2	0.1	ri		0		3.1	7.7	10.3
25.	0.2	3.5	-0.7	0.1	ri		0		1.4	6.2	4.6
26.	1.8	4.6	-2.7	---			0		2.2	6.7	7.7
27.	1.6	6.6	0.4	---			0		6.7	11.3	14.9
28.	-2.3	1.7	-3.7	---			0		8.6	15.4	20.6



Meðalhiti	=	3.1 °C
Meðalhámarkshiti	=	5.9 °C
Meðallágmarkshiti	=	0.6 °C
Úrkomumagn	=	103.7 mm
Meðalvindhraði	=	4.0 m/s

Útgefandi : **Veðurstofa Íslands**  
 Heimilisfang : **Bústaðavegur 9**  
**150 Reykjavík**

Dags	Meðalhiti (°C)	Hámark (°C)	Lágmark (°C)	Úrkoma (mm)	Úrkomutegund	Snjódýpt (cm)	Snjóhula (0-4)	Sólskin(klíst)	Meðalvindur (m/s)	Mesti vindur (m/s)	Hviða (m/s)
1.	7.6	8.5	4.3	10.0	ri		0		9.5	14.4	19.0
2.	5.0	8.2	5.1	7.8	ri		0		9.0	16.5	22.1
3.	2.9	5.7	1.3	15.0	sl		0		5.7	11.3	18.5
4.	7.6	10.2	3.3	12.2	sl		0		9.3	12.4	17.0
5.	3.7	9.4	1.9	6.2	ri		0		5.7	8.2	11.8
6.	-1.3	2.8	-2.2	0.1	sl		0		3.8	7.7	10.3
7.	-0.9	0.8	-2.8	1.5	sn	2	4		6.0	9.8	12.9
8.	-4.5	-0.4	-6.9	0.2	sn	2	2		3.7	8.8	11.3
9.	1.3	5.2	-7.1	0.0			2		7.4	14.9	20.6
10.	4.9	7.6	1.8	10.6	sl		0		10.9	16.5	22.7
11.	1.7	5.0	0.0	3.2	sl		0		4.3	11.3	14.9
12.	5.2	7.3	-0.1	2.6	sl		0		11.8	17.0	26.8
13.	4.3	8.2	2.8	6.4	ri		0		4.1	17.0	26.8
14.	2.1	6.2	0.3	0.1	ri		0		7.4	13.4	21.1
15.	0.5	2.8	0.1	---			0		12.0	18.5	24.7
16.	-2.9	1.7	-4.7	0.0			0		16.0	20.1	25.7
17.	2.5	4.0	-2.9	0.0			0		8.1	13.9	15.4
18.	3.1	5.2	1.4	---			0		3.9	8.8	12.4
19.	4.9	7.0	2.8	5.6	sl		0		3.9	6.2	9.8
20.	6.3	7.7	3.8	0.0			0		10.0	14.9	20.6
21.	6.4	8.9	4.8	16.2	ri		0		8.3	16.0	22.1
22.	7.6	9.0	3.2	15.0	ri		0		12.5	19.6	26.8
23.	4.7	8.1	4.1	1.0	ri		0		1.9	4.1	5.7
24.	4.3	6.8	3.0	0.1	ri		0		2.8	8.2	11.8
25.	3.7	6.1	3.4	0.0			0		5.9	10.8	14.9
26.	4.5	7.0	2.0	4.0	ri		0		4.9	7.2	9.8
27.	2.5	6.7	0.3	5.0	ri		0		3.6	5.7	7.2
28.	-0.6	3.9	-1.0	---			0		6.7	12.4	16.5



Meðalhiti	=	3.1 °C
Frávik frá meðaltali 1931-60	=	2.8 °C
Meðalhámarkshiti	=	6.1 °C
Meðallágmarkshiti	=	0.8 °C
Úrkomumagn	=	122.8 mm
Hlutfall úrkomu af meðaltali 1931-60	=	157.0 %
Meðalvindhraði	=	7.1 m/s







