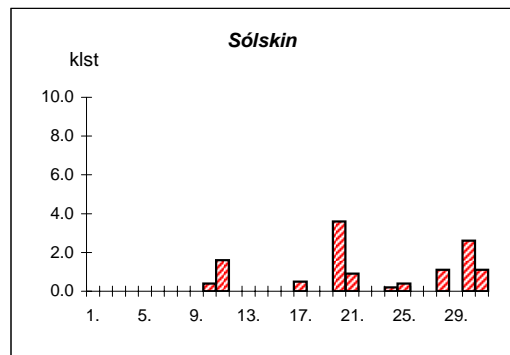
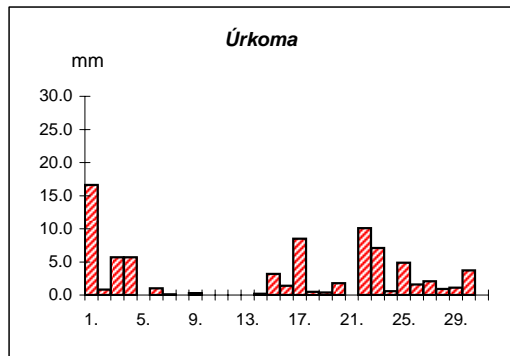
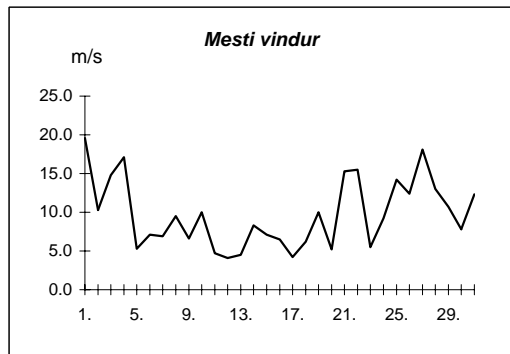
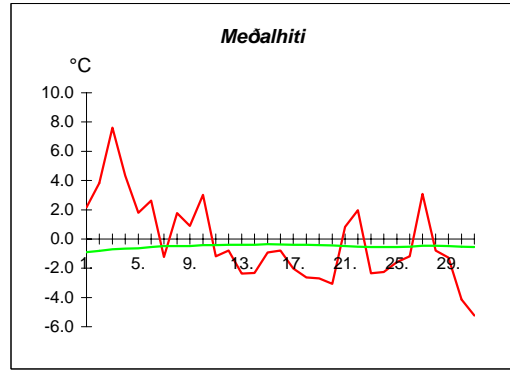


Reykjavík janúar 2008

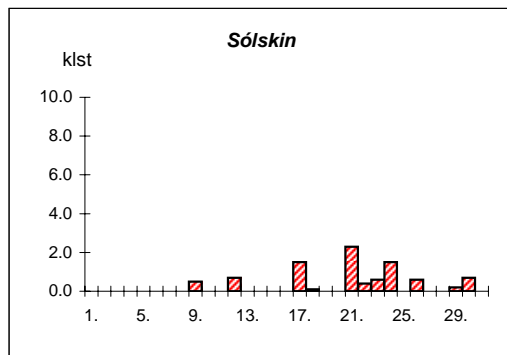
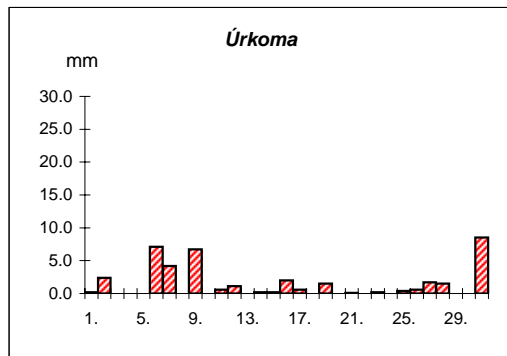
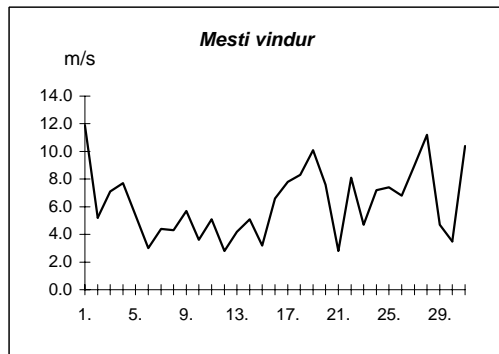
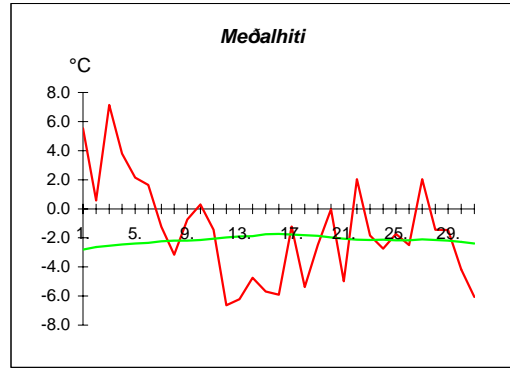
Dags	Meðalhiti (°C)	Hámark (°C)	Lágmark (°C)	Úrkoma (mm)	Úrkomutegund	Snjóþýpt (cm)	Snjóhula (0-4)	Sólskin(klst)	Meðalvindur (m/s)	Mesti vindur (m/s)	Hviða (m/s)
1.	2.2	7.0	-0.6	16.6	sl			0.0	7.6	19.6	29.7
2.	3.8	3.2	0.5	0.8	sl	2	4	0.0	4.8	10.3	14.9
3.	7.6	9.5	2.9	5.7	ri			0.0	11.1	14.8	22.7
4.	4.3	7.5	3.3	5.7	ri			0.0	8.2	17.1	25.2
5.	1.8	4.5	-0.6					0.0	2.2	5.3	6.9
6.	2.6	3.3	-0.8	1.0	ri			0.0	4.4	7.1	10.8
7.	-1.2	3.1	-3.0	0.1	sn			0.0	2.5	6.9	10.1
8.	1.8	3.2	-1.8					0.0	3.0	9.5	18.1
9.	0.9	3.1	-0.4	0.3	sn	1	4	0.0	2.9	6.6	10.5
10.	3.0	4.5	0.5				2	0.4	4.3	10.0	18.5
11.	-1.2	3.5	-1.5				2	1.6	2.1	4.7	6.9
12.	-0.8	0.8	-2.9	0.0	sn		2	0.0	2.1	4.1	6.0
13.	-2.4	-0.4	-3.9				2	0.0	1.9	4.5	7.1
14.	-2.3	-1.0	-4.0	0.2	sn		2	0.0	6.2	8.3	14.8
15.	-0.9	-0.2	-3.5	3.2	sn	8	4	0.0	4.6	7.1	11.0
16.	-0.8	1.0	-1.5	1.4	sn	10	4	0.0	2.8	6.5	10.8
17.	-2.0	1.0	-4.5	8.5	sn	20	4	0.5	2.1	4.2	6.7
18.	-2.6	-0.8	-3.2	0.5	sn	17	4	0.0	3.7	6.2	10.2
19.	-2.7	-0.5	-7.9	0.4	sn	16	4	0.0	4.9	10.0	17.7
20.	-3.1	-0.4	-4.8	1.8	sn	16	4	3.6	2.4	5.2	16.5
21.	0.8	3.9	-6.0			16	4	0.9	5.8	15.3	23.8
22.	2.0	5.0	-2.1	10.1	sl		2	0.0	9.8	15.5	25.8
23.	-2.4	2.2	-4.1	7.1	sn	6	4	0.0	2.4	5.5	9.5
24.	-2.3	-1.4	-3.0	0.6	sn	5	4	0.2	4.8	9.2	13.6
25.	-1.6	-0.5	-3.4	4.9	sn	13	4	0.4	8.7	14.2	21.7
26.	-1.2	0.0	-2.8	1.6	sn	12	4	0.0	5.9	12.4	18.0
27.	3.1	7.4	-1.8	2.1	sl		2	0.0	12.6	18.1	30.9
28.	-0.8	3.1	-2.0	0.9	sl		2	1.1	4.6	13.0	21.4
29.	-1.3	0.5	-3.5	1.1	sn		2	0.0	5.9	10.7	15.8
30.	-4.1	-0.5	-6.5	3.7	sn	7	4	2.6	1.9	7.8	13.8
31.	-5.2	-1.7	-7.0	0.0	sn		2	1.1	6.7	12.3	21.5

Meðalhiti	=	-0.2 °C
Frávik frá meðaltali 1961-90	=	0.3 °C
Meðalhámarkshiti	=	2.3 °C
Meðallágmarkshiti	=	-2.6 °C
Úrkomumagn	=	78.3 mm
Hlutfall úrkoma af meðaltali 1961-90	=	103.0 %
Meðalvindhraði	=	4.9 m/s
Sólskinsstundir	=	12.4 klst



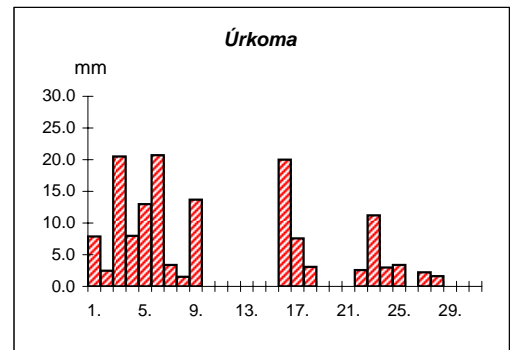
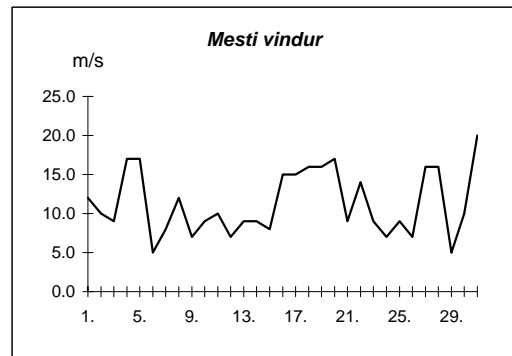
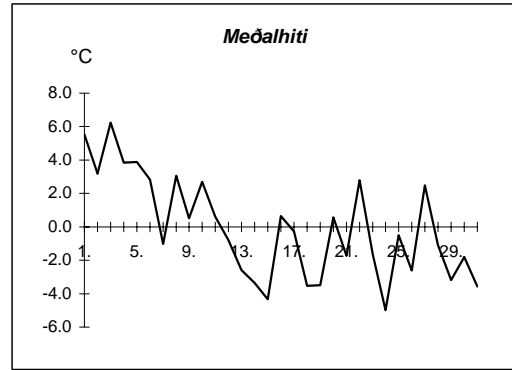
Akureyri janúar 2008

Dags	Meðalhiti (°C)	Hámark (°C)	Lágmark (°C)	Úrkoma (mm)	Úrkomutegund	Snjóþýpt (cm)	Snjóhula (0-4)	Sólskin(klst)	Meðalvindur (m/s)	Mesti vindur (m/s)	Hviða (m/s)
1.	5.5	9.5	2.8	0.2	ri			0.0	6.1	11.9	24.1
2.	0.6	3.8	-1.5	2.4	ri			0.0	1.9	5.2	8.8
3.	7.2	9.0	-0.4					0.0	3.5	7.1	14.3
4.	3.8	7.6	2.5					0.0	3.2	7.7	13.4
5.	2.1	4.5	1.0	0.0	sl			0.0	2.3	5.4	9.1
6.	1.6	4.0	0.2	7.1	sl			0.0	1.5	3.0	5.5
7.	-1.3	2.7	-3.6	4.2	sl		2	0.0	2.5	4.4	8.2
8.	-3.2	0.6	-7.3				2	0.0	1.5	4.3	9.5
9.	-0.7	2.7	-2.8	6.7	sl	2	4	0.5	1.7	5.7	9.8
10.	0.3	2.1	-4.7			2	4	0.0	1.6	3.6	6.5
11.	-1.4	2.1	-3.3	0.6	sl	2	4	0.0	1.7	5.1	8.0
12.	-6.6	-2.3	-8.0	1.1	sn	3	4	0.7	1.3	2.8	4.6
13.	-6.2	-3.2	-11.0			3	4	0.0	2.1	4.2	7.1
14.	-4.7	-3.1	-4.9	0.2	sn	3	4	0.0	2.1	5.1	9.0
15.	-5.7	-4.8	-6.3	0.2	sn	3	4	0.0	1.1	3.2	7.6
16.	-5.9	-3.8	-9.1	2.0	sn	4	4	0.0	1.8	6.6	12.2
17.	-1.2	3.3	-6.0	0.6	sl	3	4	1.5	3.5	7.8	16.1
18.	-5.4	-2.5	-8.4			3	4	0.1	3.3	8.3	13.8
19.	-2.5	-0.5	-4.4	1.5	sn	5	4	0.0	3.4	10.1	18.0
20.	0.0	1.5	-2.8	0.0	sn	3	4	0.0	4.4	7.6	11.8
21.	-5.0	0.8	-7.7	0.1	sn	3	4	2.3	1.3	2.8	4.8
22.	2.0	5.4	-8.9			3	4	0.4	4.5	8.1	15.7
23.	-1.8	3.7	-2.3	0.2	ri		2	0.6	2.5	4.7	10.3
24.	-2.7	-0.5	-4.5			2	4	1.5	3.8	7.2	12.6
25.	-1.7	0.5	-4.3	0.4	sn	4	4	0.0	4.2	7.4	13.5
26.	-2.5	0.4	-2.8	0.6	sn	4	4	0.6	3.4	6.8	11.2
27.	2.0	7.4	-5.6	1.7	sl	9	4	0.0	5.9	9.0	20.3
28.	-1.4	4.9	-4.1	1.5	sl		2	0.0	4.5	11.2	23.2
29.	-1.5	0.5	-3.2				2	0.2	2.2	4.7	9.5
30.	-4.2	-1.2	-5.8				2	0.7	1.3	3.5	9.3
31.	-6.1	-1.5	-8.0	8.5	sn	21	4	0.0	6.7	10.4	18.1



Meðalhiti	=	-1.5 °C
Frávik frá meðaltali 1961-90	=	0.7 °C
Meðalhámarkshiti	=	1.7 °C
Meðallágmarkshiti	=	-4.4 °C
Úrkomumagn	=	39.8 mm
Hlutfall úrkomu af meðaltali 1961-90	=	72.4 %
Meðalvindhraði	=	2.9 m/s
Sólskinsstundir	=	9.1 klst

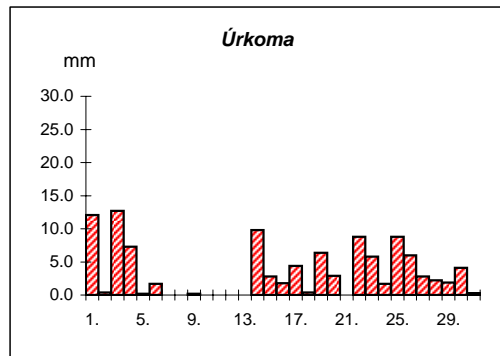
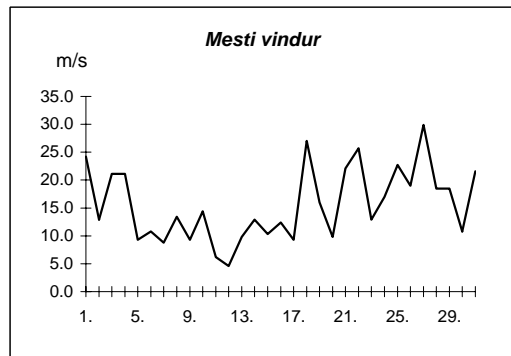
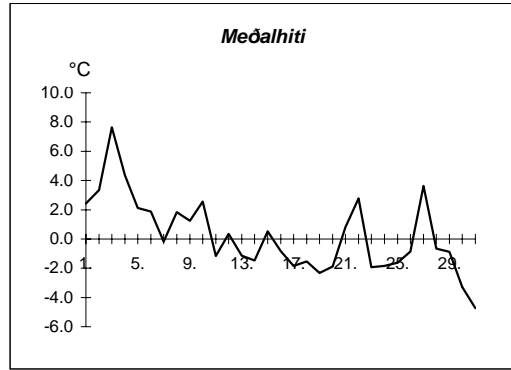
Dags	Meðalhiti (°C)	Hámark (°C)	Lágmark (°C)	Úrkoma (mm)	Úrkomutegund	Snjódýpt (cm)	Snjóhula (0-4)	Sólskín(klst)	Meðalvindur (m/s)	Mesti vindur (m/s)
1.	5.5	8.1	3.7	7.9	ri				10.5	12.0
2.	3.2	6.9	0.1	2.5	ri				4.9	10.0
3.	6.2	7.4	5.3	20.5	ri				7.4	9.0
4.	3.8	6.8	2.7	8.0	sl				11.6	17.0
5.	3.9	5.9	1.8	13.0	ri				8.5	17.0
6.	2.8	5.5	0.8	20.7	ri				2.0	5.0
7.	-1.0	3.5	-3.3	3.4	ri				4.5	8.0
8.	3.1	5.2	-3.1	1.5	ri				6.9	12.0
9.	0.5	3.9	-1.5	13.7	sl	2	4		3.9	7.0
10.	2.7	3.9	0.7			1	4		6.5	9.0
11.	0.6	3.7	-0.3				2		7.5	10.0
12.	-0.8	1.9	-2.7						4.5	7.0
13.	-2.6	1.4	-3.7						6.0	9.0
14.	-3.4	-1.7	-4.5						6.5	9.0
15.	-4.3	-1.4	-5.3						4.9	8.0
16.	0.6	2.7	-5.1	20.0	sn	20	4		5.2	15.0
17.	-0.3	4.0	-1.7	7.6	sl	15	4		3.0	15.0
18.	-3.5	0.3	-4.8	3.1	sn	14	4		7.5	16.0
19.	-3.5	-0.4	-6.6			14	4		3.6	16.0
20.	0.6	2.3	-7.2			13	4		13.3	17.0
21.	-1.7	2.4	-4.6			12	4		3.9	9.0
22.	2.8	4.5	-4.6	2.6	ri	10	4		9.2	14.0
23.	-1.6	4.0	-4.0	11.2	sn		2		2.4	9.0
24.	-5.0	-1.0	-8.0	3.0	sn	5	4		4.1	7.0
25.	-0.5	1.6	-7.1	3.4	sn	9	4		6.4	9.0
26.	-2.6	1.0	-5.4			9	4		4.9	7.0
27.	2.5	6.0	-4.1	2.2	sl	11	4		11.1	16.0
28.	-1.1	5.7	-4.0	1.6	ri	7	4		8.5	16.0
29.	-3.2	-2.3	-5.4				2		2.4	5.0
30.	-1.8	-0.4	-4.6						4.8	10.0
31.	-3.6	1.2	-6.1	0.0	sn				17.2	20.0



Meðalhiti	=	-0.1 °C
Meðalhámarkshiti	=	3.0 °C
Meðallágmarkshiti	=	-3.0 °C
Úrkomumagn	=	145.9 mm
Meðalvindhraði	=	6.6 m/s

Útgefandi : **Veðurstofa Íslands**
 Heimilisfang : **Bústaðavegur 9**
150 Reykjavík

Dags	Meðalhiti (°C)	Hámark (°C)	Lágmark (°C)	Úrkoma (mm)	Úrkomutegund	Snjóþýpt (cm)	Snjóhula (0-4)	Sólskín(klst)	Meðalvindur (m/s)	Mesti vindur (m/s)	Hviða (m/s)
1.	2.4	7.0	-0.3	12.1	sl				12.1	24.2	34.5
2.	3.4	3.3	0.1	0.4	sn		2		6.6	12.9	18.5
3.	7.6	8.7	1.0	12.7	ri				15.6	21.1	28.8
4.	4.4	8.2	3.0	7.3	ri				12.3	21.1	29.9
5.	2.1	3.4	-0.5	0.2	ri				3.8	9.3	12.9
6.	1.9	2.7	0.8	1.7	ri				7.7	10.8	13.9
7.	-0.2	2.4	-1.6	0.0	sn				3.5	8.8	11.8
8.	1.8	3.7	-1.3						6.4	13.4	18.0
9.	1.3	2.8	-0.5	0.2	sn	1	4		6.2	9.3	13.9
10.	2.6	4.1	0.7	0.0	sl				7.5	14.4	18.5
11.	-1.2	2.7	-1.3						3.0	6.2	7.7
12.	0.3	2.1	-4.5	0.0	sn				3.1	4.6	5.7
13.	-1.2	1.7	-2.3	0.0	sn				3.9	9.8	11.8
14.	-1.5	0.5	-2.4	9.8	sn	25	4		9.1	12.9	16.5
15.	0.5	1.8	-1.3	2.8	sn	23	4		4.8	10.3	13.9
16.	-0.8	2.4	-2.3	1.8	sn	20	4		5.7	12.4	15.4
17.	-1.8	-0.1	-5.1	4.4	sn	21	4		4.8	9.3	11.8
18.	-1.5	0.6	-2.7	0.4	sn	19	4		7.0	27.0	34.0
19.	-2.3	-0.3	-6.8	6.4	sn	21	4		8.1	16.0	22.1
20.	-1.9	0.2	-4.8	2.9	sn	17	4		4.5	9.8	12.9
21.	0.8	3.9	-6.1			15	4		9.7	22.1	30.4
22.	2.8	6.2	1.4	8.8	sl		2		17.5	25.7	39.1
23.	-1.9	2.3	-4.8	5.8	sl	2	4		4.0	12.9	17.0
24.	-1.8	1.0	-3.0	1.7	sn	3	4		6.9	17.0	21.6
25.	-1.6	0.7	-3.7	8.8	sn	5	4		16.0	22.7	28.8
26.	-0.9	0.6	-3.3	6.0	sn	4	4		10.3	19.0	23.7
27.	3.6	6.7	-5.7	2.8	sl				18.6	29.9	40.7
28.	-0.7	3.8	-2.0	2.2	sn		2		8.1	18.5	26.3
29.	-0.9	1.0	-3.0	1.9	sn		2		9.8	18.5	22.7
30.	-3.3	0.7	-5.8	4.1	sn	7	4		5.7	10.8	14.4
31.	-4.7	-1.3	-6.2	0.3	sn		2		13.2	21.6	27.3



Meðalhiti	=	0.2 °C
Frávík frá meðaltali 1961-90	=	0.3 °C
Meðalhámarkshiti	=	2.7 °C
Meðallágmarkshiti	=	-2.4 °C
Úrkomumagn	=	105.5 mm
Hlutfall úrkomu af meðaltali 1961-90	=	107.3 %
Meðalvindhraði	=	8.2 m/s