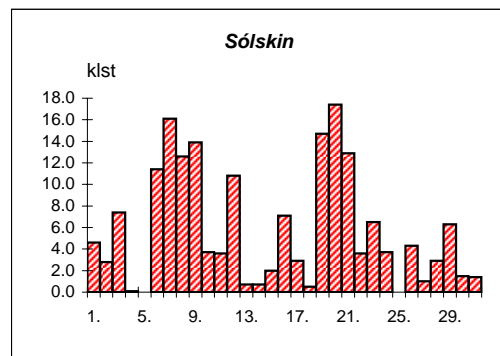
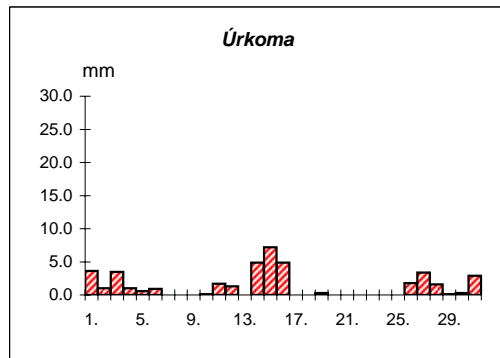
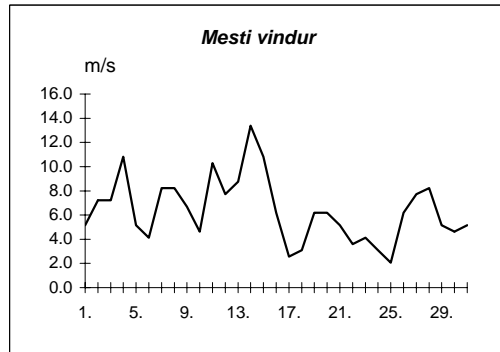
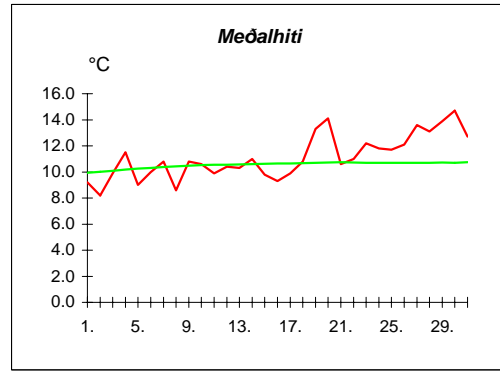


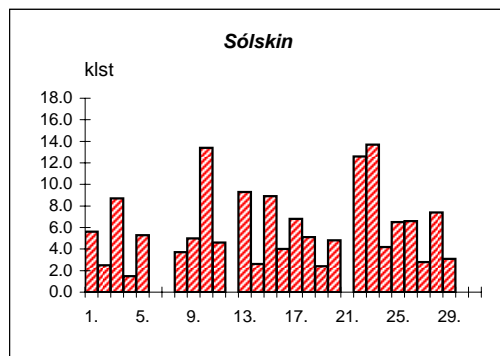
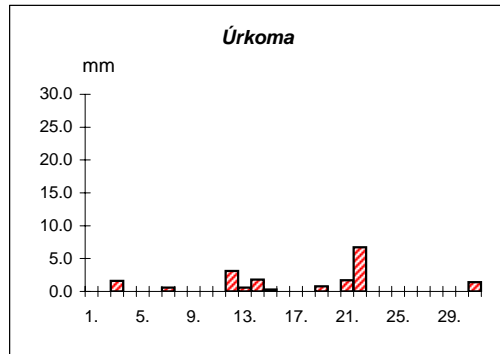
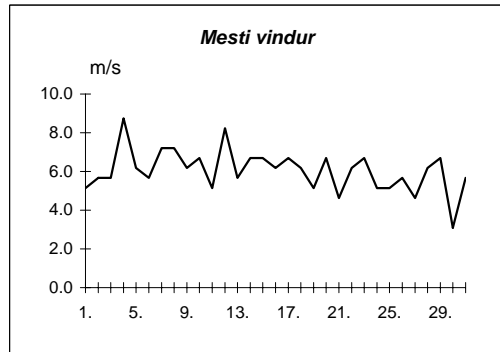
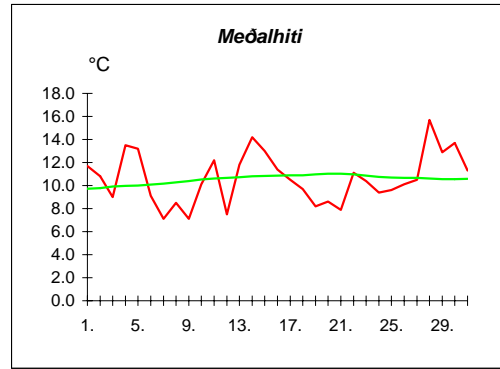
Dags	Meðalhiti (°C)	Hámark (°C)	Lágmark (°C)	Úrkoma (mm)	Úrkomutegund	Snjódýpt (cm)	Snjöhula (0-4)	Sólskin(klst)	Meðalvindur (m/s)	Mesti vindur (m/s)	Hviða (m/s)
1.	9.2	14.3	8.0	3.6	ri		0	4.6	3.4	5.1	7.7
2.	8.2	10.5	6.7	1.0	ri		0	2.8	4.1	7.2	13.9
3.	9.9	13.1	6.5	3.5	ri		0	7.4	4.1	7.2	11.3
4.	11.5	12.5	8.8	1.0	ri		0	0.1	7.2	10.8	16.0
5.	9.0	12.2	7.3	0.6	ri		0	0.0	1.3	5.1	8.2
6.	10.0	12.7	5.6	0.9	ri		0	11.4	2.0	4.1	6.7
7.	10.8	14.4	8.1	---			0	16.1	3.9	8.2	13.9
8.	8.6	11.7	6.3	0.0			0	12.6	4.4	8.2	13.4
9.	10.8	16.1	4.9	---			0	13.9	3.6	6.7	11.3
10.	10.6	16.1	8.4	0.1	ri		0	3.7	1.9	4.6	5.7
11.	9.9	12.0	9.1	1.7	ri		0	3.6	6.1	10.3	16.0
12.	10.4	12.5	8.4	1.3	ri		0	10.8	5.4	7.7	11.8
13.	10.3	12.5	7.4	---			0	0.7	5.0	8.8	13.4
14.	11.0	13.5	9.6	4.9	ri		0	0.7	6.8	13.4	20.6
15.	9.8	11.0	8.1	7.2	ri		0	2.0	7.7	10.8	17.5
16.	9.3	12.0	7.4	4.9	ri		0	7.1	3.7	6.2	9.8
17.	9.9	12.5	6.5	---			0	2.9	1.3	2.6	4.1
18.	10.8	12.6	8.9	---			0	0.5	1.3	3.1	4.6
19.	13.3	15.8	8.3	0.3	ri		0	14.7	2.3	6.2	10.3
20.	14.1	19.0	8.3	---			0	17.4	2.7	6.2	10.3
21.	10.6	18.1	7.9	---			0	12.9	2.9	5.1	7.7
22.	11.0	12.5	9.6	---			0	3.6	1.8	3.6	5.1
23.	12.2	15.5	9.5	---			0	6.5	2.0	4.1	6.2
24.	11.8	14.7	7.6	---			0	3.7	1.5	3.1	5.7
25.	11.7	13.3	10.7	0.0			0	0.0	1.2	2.1	2.6
26.	12.1	15.3	10.1	1.8	ri		0	4.3	3.0	6.2	9.8
27.	13.6	16.5	10.1	3.4	ri		0	1.0	4.4	7.7	13.4
28.	13.1	16.2	11.2	1.6	ri		0	2.9	4.6	8.2	12.4
29.	13.9	16.6	11.5	0.1	ri		0	6.3	2.6	5.1	7.7
30.	14.7	18.7	11.8	0.3	ri		0	1.5	1.5	4.6	8.8
31.	12.7	17.6	11.6	2.9	ri		0	1.4	2.3	5.1	8.2



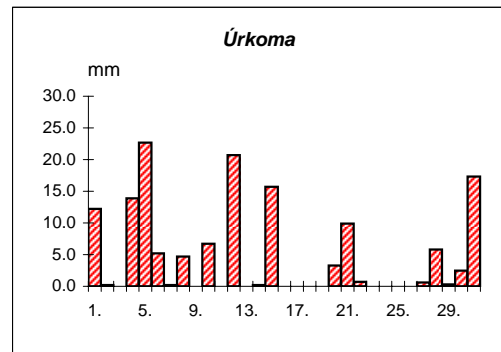
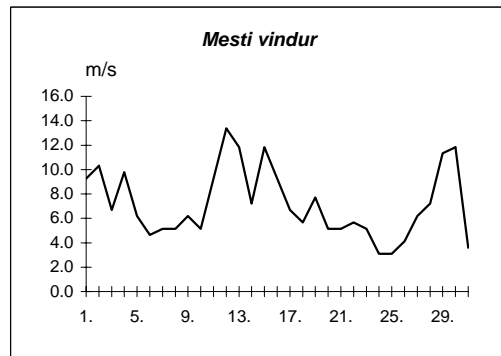
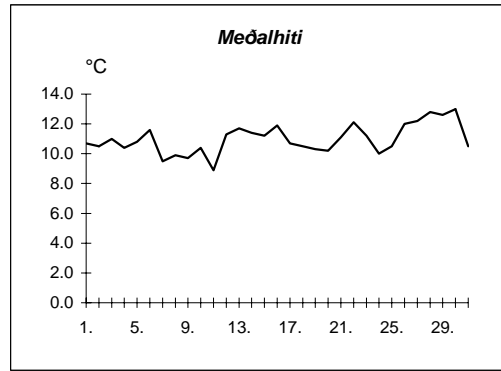
Meðalhiti	=	11.1 °C
Frávik frá meðaltali 1931-60	=	-0.1 °C
Meðalhámarkshiti	=	14.3 °C
Meðallágmarkshiti	=	8.5 °C
Úrkomumagn	=	41.1 mm
Hlutfall úrkomu af meðaltali 1931-60	=	86.0 %
Meðalvindhraði	=	3.4 m/s
Sólskinsstundir	=	177.1 klst

Dags	Meðalhiti (°C)	Hámark (°C)	Lágmark (°C)	Úrkoma (mm)	Úrkomutegund	Snjóþýpt (cm)	Snjóhula (0-4)	Sólskin(klst)	Meðalvindur (m/s)	Mesti vindur (m/s)	Hviða (m/s)
1.	11.7	17.3	8.1	0.0			4	5.6	2.0	5.1	8.2
2.	10.8	14.6	6.4	---			0	2.5	2.1	5.7	10.8
3.	9.0	14.0	5.9	1.6	ri		0	8.7	3.3	5.7	7.7
4.	13.5	18.2	8.9	0.0			0	1.5	3.9	8.8	16.0
5.	13.2	17.6	11.4	0.0			0	5.3	3.1	6.2	11.8
6.	9.1	13.0	8.7	---			0	0.0	2.9	5.7	7.7
7.	7.1	8.9	6.8	0.6	ri		0	0.0	5.6	7.2	11.3
8.	8.5	12.0	5.4	---			0	3.7	2.6	7.2	11.3
9.	7.1	12.0	6.2	0.0			0	5.0	3.7	6.2	8.8
10.	10.1	14.1	2.3	0.0			0	13.4	3.1	6.7	9.3
11.	12.2	16.8	8.0	---			0	4.6	2.1	5.1	9.8
12.	7.5	15.2	6.9	3.1	ri		0	0.0	4.1	8.2	13.9
13.	11.8	19.0	3.9	0.6	sl		0	9.3	2.8	5.7	10.8
14.	14.2	18.0	9.9	1.8	ri		0	2.6	4.7	6.7	12.4
15.	13.0	18.5	10.4	0.3	ri		0	8.9	4.1	6.7	13.9
16.	11.4	17.0	10.3	0.0			0	4.0	3.2	6.2	11.3
17.	10.5	13.5	8.3	---			0	6.8	2.5	6.7	9.8
18.	9.7	12.0	6.3	---			0	5.1	2.3	6.2	8.8
19.	8.2	11.4	4.8	0.8	ri		0	2.4	2.3	5.1	7.2
20.	8.6	11.5	6.7	0.0			0	4.8	3.0	6.7	9.3
21.	7.9	9.9	6.4	1.7	ri		0	0.0	2.5	4.6	6.7
22.	11.1	15.0	7.6	6.7	sl		0	12.6	2.6	6.2	9.3
23.	10.4	13.7	6.9	0.0			4	13.7	2.7	6.7	9.8
24.	9.4	12.5	8.1	0.0			0	4.2	1.6	5.1	6.7
25.	9.6	13.6	6.7	---			0	6.5	2.2	5.1	7.7
26.	10.1	13.5	7.5	---			4	6.6	2.1	5.7	7.7
27.	10.5	13.5	7.1	---			4	2.8	1.7	4.6	6.2
28.	15.7	22.9	10.2	---			4	7.4	2.5	6.2	8.8
29.	12.9	17.2	10.7	---			0	3.1	2.6	6.7	9.3
30.	13.7	16.7	9.2	---			0	0.0	1.3	3.1	7.2
31.	11.3	15.7	10.7	1.4	ri		0	0.0	2.7	5.7	9.3

Meðalhiti	=	10.6 °C
Frávik frá meðaltali 1931-60	=	-0.3 °C
Meðalhámarkshiti	=	14.8 °C
Meðallágmarkshiti	=	7.6 °C
Úrkomumagn	=	18.6 mm
Hlutfall úrkomu af meðaltali 1931-60	=	53.0 %
Meðalvindhraði	=	2.8 m/s
Sólskinsstundir	=	151.1 klst



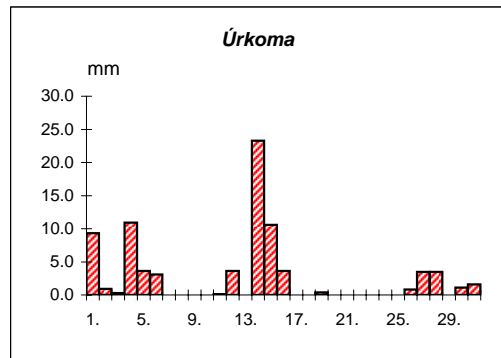
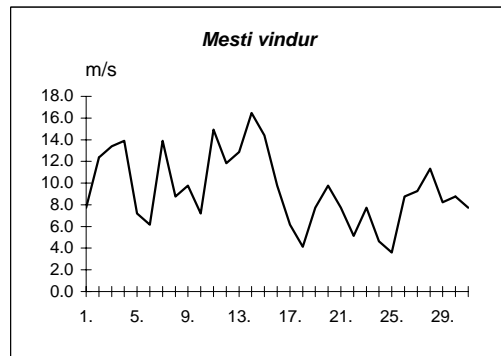
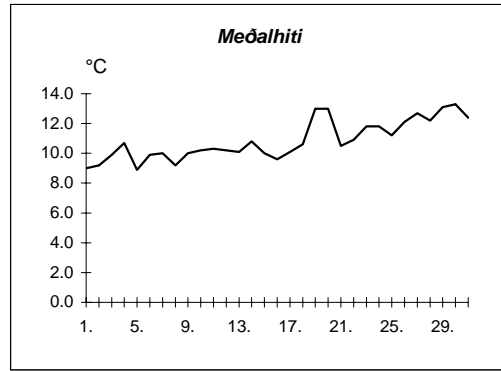
Dags	Meðalhiti (°C)	Hámark (°C)	Lágmark (°C)	Úrkoma (mm)	Úrkomutegund	Snjódýpt (cm)	Snjöhula (0-4)	Sólskin(klíst)	Meðalvindur (m/s)	Mesti vindur (m/s)	Hviða (m/s)
1.	10.7	13.0	9.5	12.2	ri		0		6.0	9.3	12.4
2.	10.5	12.4	8.2	0.2	ri		0		5.7	10.3	16.0
3.	11.0	14.2	8.2	0.0			0		3.1	6.7	9.8
4.	10.4	12.9	8.4	13.9	ri		0		5.8	9.8	13.9
5.	10.8	12.0	10.2	22.7	ri		0		2.6	6.2	8.2
6.	11.6	14.4	9.5	5.2	ri		0		2.1	4.6	6.7
7.	9.5	13.9	8.9	0.2	ri		0		2.6	5.1	7.7
8.	9.9	12.7	7.3	4.7	ri		0		2.1	5.1	7.2
9.	9.7	13.0	3.9	---			0		1.8	6.2	7.7
10.	10.4	13.1	7.9	6.7	ri		0		2.3	5.1	8.2
11.	8.9	13.2	4.6	---			0		3.5	9.3	12.9
12.	11.3	14.9	8.5	20.7	ri		0		5.9	13.4	18.0
13.	11.7	15.1	8.0	0.0			0		3.9	11.8	10.8
14.	11.4	12.7	9.9	0.2	ri		0		3.6	7.2	10.3
15.	11.2	13.5	7.6	15.7	ri		0		6.4	11.8	16.5
16.	11.9	16.6	9.0	0.0			0		3.4	9.3	13.4
17.	10.7	17.0	6.0	0.0			0		2.0	6.7	8.8
18.	10.5	12.9	8.4	---			0		2.0	5.7	7.7
19.	10.3	12.7	9.9	0.0			0		3.1	7.7	10.3
20.	10.2	12.5	8.8	3.3	ri		0		1.9	5.1	6.2
21.	11.1	14.2	8.8	9.9	ri		0		2.0	5.1	6.7
22.	12.1	14.7	8.5	0.7	ri		0		2.0	5.7	7.2
23.	11.2	13.8	10.2	---			0		2.4	5.1	7.2
24.	10.0	12.1	9.0	0.0			0		1.3	3.1	3.6
25.	10.5	12.3	9.0	0.0			0		1.3	3.1	4.6
26.	12.0	14.4	9.9	0.0			0		1.8	4.1	5.7
27.	12.2	15.4	10.3	0.6	ri		0		2.4	6.2	9.3
28.	12.8	15.4	11.0	5.8	ri		0		2.4	7.2	7.2
29.	12.6	14.7	8.1	0.3	ri		0		3.1	11.3	13.9
30.	13.0	15.5	12.0	2.5	ri		0		6.5	11.8	16.5
31.	10.5	13.9	9.5	17.3	ri		0		1.7	3.6	5.7



Meðalhiti	=	11.0 °C
Meðalhámarkshiti	=	13.8 °C
Meðallágmarkshiti	=	8.7 °C
Úrkomumagn	=	142.8 mm
Meðalvindhraði	=	3.1 m/s

Útgefandi : **Veðurstofa Íslands**
 Heimilisfang : **Bústaðavegur 9**
150 Reykjavík

Dags	Meðalhiti (°C)	Hámark (°C)	Lágmark (°C)	Úrkoma (mm)	Úrkomutegund	Snjódypt (cm)	Snjóhula (0-4)	Sólskin(klst)	Meðalvindur (m/s)	Mesti vindur (m/s)	Hviða (m/s)
1.	9.0	12.4	8.3	9.3	ri		0		5.6	7.7	10.3
2.	9.2	11.5	6.9	0.9	ri		0		6.9	12.4	16.5
3.	9.9	12.0	7.8	0.3	ri		0		7.5	13.4	19.0
4.	10.7	11.3	8.8	10.9	ri		0		10.5	13.9	18.0
5.	8.9	11.3	7.9	3.6	ri		0		3.1	7.2	9.3
6.	9.9	12.6	5.8	3.1	ri		0		3.8	6.2	7.7
7.	10.0	14.5	8.6	0.0			0		9.7	13.9	17.5
8.	9.2	12.7	6.3	---			0		5.9	8.8	12.4
9.	10.0	14.0	6.1	0.0			0		6.8	9.8	12.9
10.	10.2	14.3	8.7	---			0		3.0	7.2	8.2
11.	10.3	11.9	9.0	0.1	ri		0		8.9	14.9	20.1
12.	10.2	12.5	8.8	3.6	ri		0		7.5	11.8	14.9
13.	10.1	12.3	7.5	---			4		8.4	12.9	18.0
14.	10.8	12.2	9.7	23.3	ri		0		10.6	16.5	22.1
15.	10.0	12.3	9.1	10.6	ri		0		10.6	14.4	20.1
16.	9.6	11.6	8.1	3.6	ri		0		5.4	9.8	12.9
17.	10.1	11.6	8.1	0.0			0		2.2	6.2	8.2
18.	10.6	12.5	9.2	---			0		2.1	4.1	5.1
19.	13.0	16.2	9.4	0.4	ri		0		5.2	7.7	10.3
20.	13.0	16.7	9.4	---			0		6.5	9.8	11.3
21.	10.5	14.9	8.0	---			0		5.5	7.7	11.3
22.	10.9	12.4	9.5	0.0			0		3.2	5.1	7.2
23.	11.8	14.3	9.4	0.0			0		3.8	7.7	10.3
24.	11.8	15.2	9.2	0.0			0		3.1	4.6	6.2
25.	11.2	12.8	10.6	0.0			0		1.7	3.6	4.6
26.	12.1	14.8	9.8	0.8	ri		0		4.4	8.8	12.4
27.	12.7	15.9	10.6	3.5	ri		0		7.1	9.3	13.4
28.	12.2	15.9	10.5	3.5	ri		0		6.6	11.3	14.9
29.	13.1	15.3	11.2	0.0			0		5.2	8.2	12.4
30.	13.3	16.4	11.2	1.1	ri		0		4.5	8.8	10.8
31.	12.4	15.3	10.5	1.6	ri		0		4.3	7.7	10.8



Meðalhiti	=	10.9 °C
Frávik frá meðaltali 1931-60	=	0.2 °C
Meðalhámarkshiti	=	13.5 °C
Meðallágmarkshiti	=	8.8 °C
Úrkomumagn	=	80.2 mm
Hlutfall úrkomu af meðaltali 1931-60	=	138.0 %
Meðalvindhraði	=	5.8 m/s