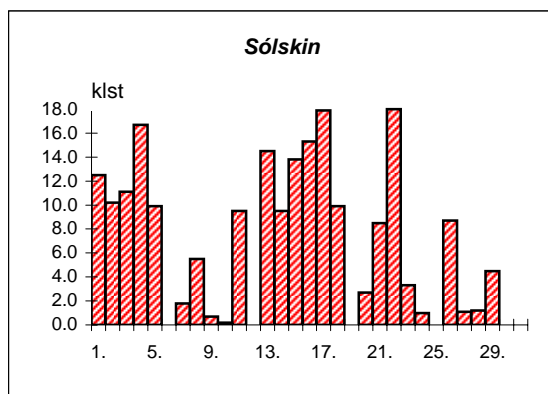
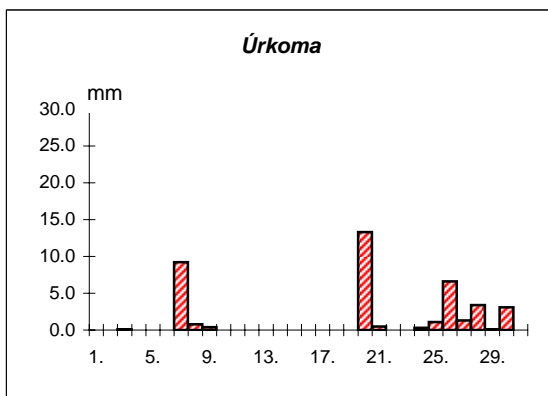
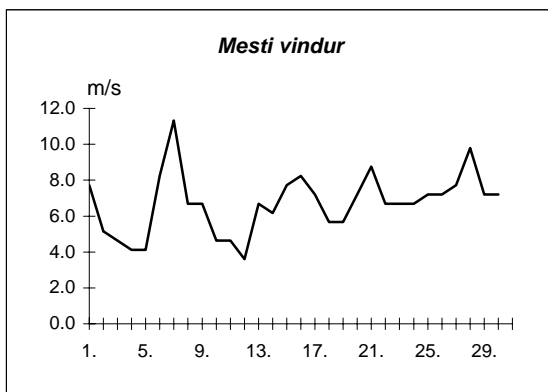
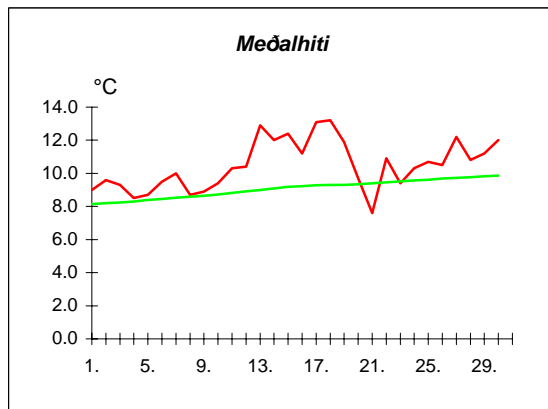
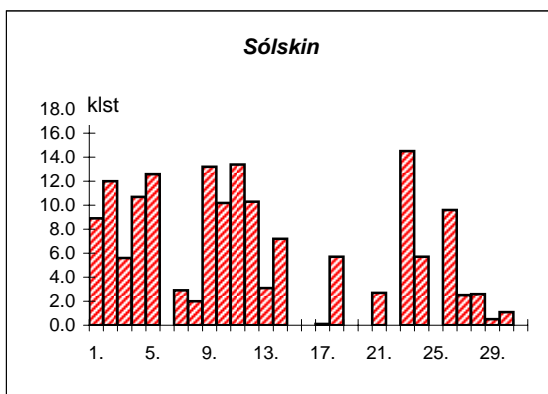
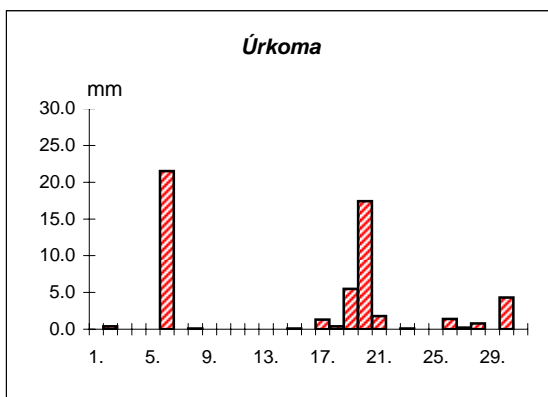
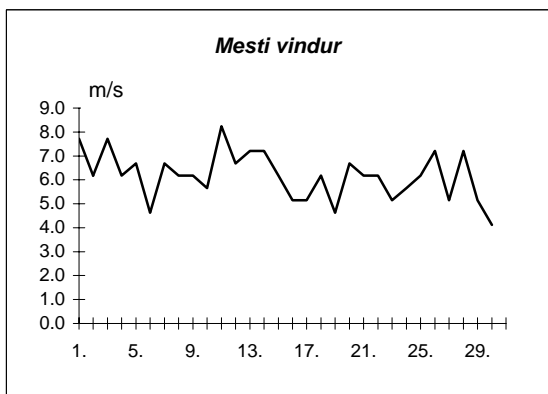
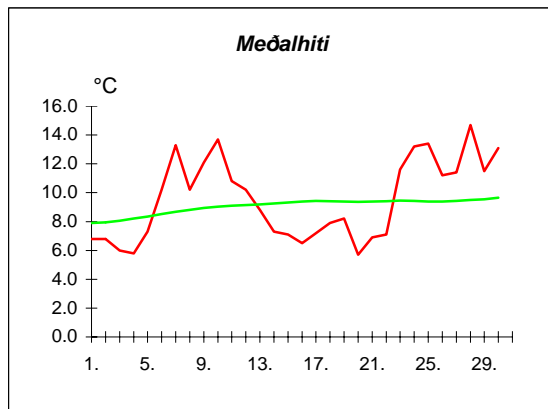


Dags	Meðalhiti (°C)	Hámark (°C)	Lágmark (°C)	Úrkoma (mm)	Úrkomutegund	Snjódýpt (cm)	Snjöhula (0-4)	Sólskin(klst)	Meðalvindur (m/s)	Mesti vindur (m/s)	Hviða (m/s)
1.	9.0	12.1	6.1	0.0			0	12.5	2.4	7.7	7.7
2.	9.6	12.4	7.4	0.0			0	10.2	3.2	5.1	7.7
3.	9.3	11.6	6.9	0.1	ri		0	11.1	3.0	4.6	8.8
4.	8.5	11.9	5.5	0.0			0	16.7	2.2	4.1	6.7
5.	8.7	11.4	3.7	---			0	9.9	2.1	4.1	6.2
6.	9.5	11.0	7.5	0.0			0	0.0	5.4	8.2	13.4
7.	10.0	11.4	8.5	9.2	ri		0	1.8	5.8	11.3	17.0
8.	8.7	10.8	7.6	0.8	ri		0	5.5	3.4	6.7	10.8
9.	8.9	10.6	6.8	0.4	ri		0	0.7	4.4	6.7	9.8
10.	9.4	10.4	7.8	0.0			0	0.2	2.2	4.6	6.7
11.	10.3	12.6	8.9	0.0			0	9.5	2.2	4.6	6.7
12.	10.4	12.1	8.2	---			0	0.0	1.5	3.6	4.6
13.	12.9	16.0	9.6	0.0			0	14.5	2.6	6.7	9.3
14.	12.0	17.4	8.3	---			0	9.5	2.8	6.2	9.3
15.	12.4	17.5	8.9	0.0			0	13.8	3.1	7.7	10.8
16.	11.2	14.3	7.0	---			0	15.3	3.3	8.2	12.4
17.	13.1	17.4	7.0	---			0	17.9	2.8	7.2	10.3
18.	13.2	16.9	10.2	---			0	9.9	3.2	5.7	8.8
19.	11.9	15.1	9.4	0.0			0	0.0	2.3	5.7	8.8
20.	9.7	12.4	9.3	13.3	ri		0	2.7	2.4	7.2	11.3
21.	7.6	11.0	4.9	0.5	ri		0	8.5	5.2	8.8	14.4
22.	10.9	14.5	4.7	0.0			0	18.0	3.2	6.7	10.8
23.	9.4	14.7	6.9	---			0	3.3	3.6	6.7	10.3
24.	10.3	12.3	8.7	0.3	ri		0	1.0	4.2	6.7	9.3
25.	10.7	12.0	9.8	1.1	ri		0	0.0	4.6	7.2	11.3
26.	10.5	12.3	8.5	6.6	ri		0	8.7	3.6	7.2	11.8
27.	12.2	16.1	9.7	1.3	ri		0	1.1	4.6	7.7	11.8
28.	10.8	14.2	10.1	3.4	ri		0	1.2	5.0	9.8	14.9
29.	11.2	14.0	7.7	0.1	ri		0	4.5	3.2	7.2	9.8
30.	12.0	13.8	9.8	3.1	ri		0	0.0	4.6	7.2	10.8



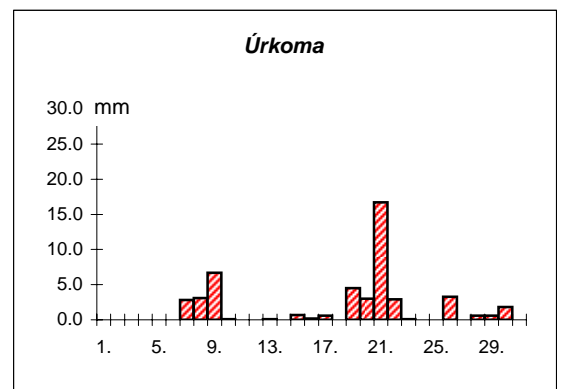
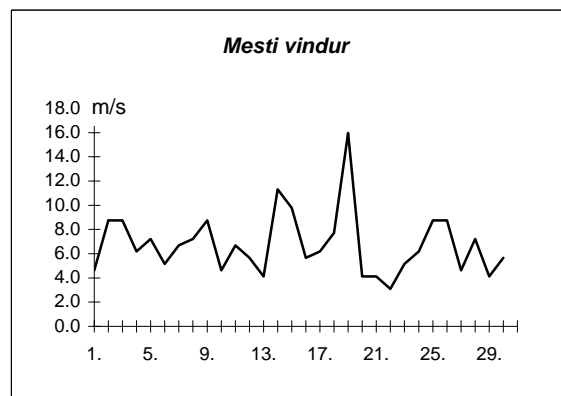
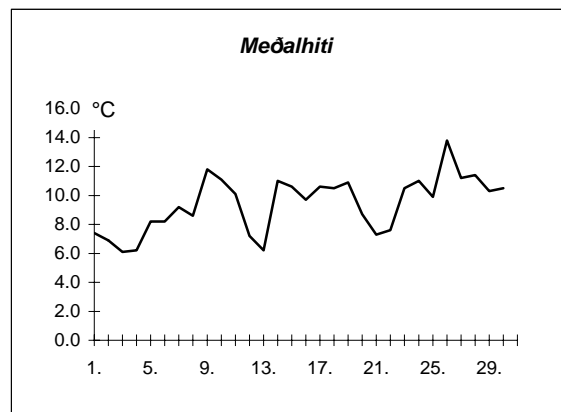
Meðalhiti	=	10.5 °C
Frávik frá meðaltali 1931-60	=	1.0 °C
Meðalhámarkshiti	=	13.3 °C
Meðallágmarkshiti	=	7.9 °C
Úrkomumagn	=	40.2 mm
Hlutfall úrkomu af meðaltali 1931-60	=	98.0 %
Meðalvindhraði	=	3.4 m/s
Sólskinsstundir	=	208.0 klst

Dags	Meðalhiti (°C)	Hámark (°C)	Lágmark (°C)	Úrkoma (mm)	Úrkomutegund	Snjódýpt (cm)	Snjöhula (0-4)	Sólskin(klst)	Meðalvindur (m/s)	Mesti vindur (m/s)	Hviða (m/s)
1.	6.8	10.9	3.1	0.0			0	8.9	3.9	7.7	11.3
2.	6.8	9.7	4.4	0.4	ri		0	12.0	4.1	6.2	8.8
3.	6.0	8.9	3.8	---			0	5.6	3.9	7.7	12.9
4.	5.8	9.2	2.7	---			0	10.7	3.4	6.2	9.3
5.	7.3	11.0	1.2	---			0	12.6	3.2	6.7	9.3
6.	10.2	13.5	4.5	21.5	sl		0	0.0	2.6	4.6	8.8
7.	13.3	17.0	10.2	0.0			0	2.9	4.2	6.7	14.4
8.	10.2	15.7	9.2	0.1	ri		0	2.0	3.8	6.2	12.4
9.	12.1	16.8	5.2	---			0	13.2	3.4	6.2	12.9
10.	13.7	18.0	10.8	---			0	10.2	3.2	5.7	11.8
11.	10.8	17.2	7.0	---			0	13.4	3.8	8.2	12.4
12.	10.2	12.8	7.0	0.0			0	10.3	3.4	6.7	9.3
13.	8.8	13.5	8.5	---			0	3.1	4.2	7.2	10.8
14.	7.3	9.7	4.8	---			0	7.2	4.6	7.2	10.3
15.	7.1	10.0	5.0	0.1	ri		0	0.0	3.1	6.2	9.3
16.	6.5	9.5	6.2	0.0			0	0.0	3.6	5.1	8.8
17.	7.2	8.6	5.9	1.3	ri		0	0.1	3.0	5.1	7.2
18.	7.9	10.5	5.8	0.4	ri		0	5.7	3.5	6.2	8.8
19.	8.2	10.2	7.0	5.5	ri		0	0.0	2.8	4.6	7.7
20.	5.7	9.2	5.4	17.4	ri		0	0.0	4.5	6.7	9.3
21.	6.9	10.5	4.0	1.8	ri		0	2.7	3.5	6.2	10.8
22.	7.1	8.7	5.1	---			0	0.0	3.6	6.2	9.8
23.	11.6	17.9	4.5	0.1	ri		0	14.5	2.6	5.1	10.3
24.	13.2	17.9	9.2	---			0	5.7	2.9	5.7	9.8
25.	13.4	16.5	11.3	---			0	0.0	4.2	6.2	13.9
26.	11.2	16.2	9.0	1.4	ri		0	9.6	3.0	7.2	12.9
27.	11.4	18.6	5.7	0.2	ri		0	2.5	1.3	5.1	7.7
28.	14.7	19.6	10.6	0.8	ri		0	2.6	3.8	7.2	12.9
29.	11.5	14.0	9.9	---			0	0.5	2.0	5.1	7.2
30.	13.1	15.7	9.8	4.3	ri		0	1.1	1.8	4.1	7.7



Meðalhiti	=	9.5 °C
Frávik frá meðaltali 1931-60	=	0.2 °C
Meðalhámarkshiti	=	13.3 °C
Meðallágmarkshiti	=	6.6 °C
Úrkomumagn	=	55.3 mm
Hlutfall úrkomu af meðaltali 1931-60	=	251.0 %
Meðalvindhraði	=	3.3 m/s
Sólskinsstundir	=	157.1 klst

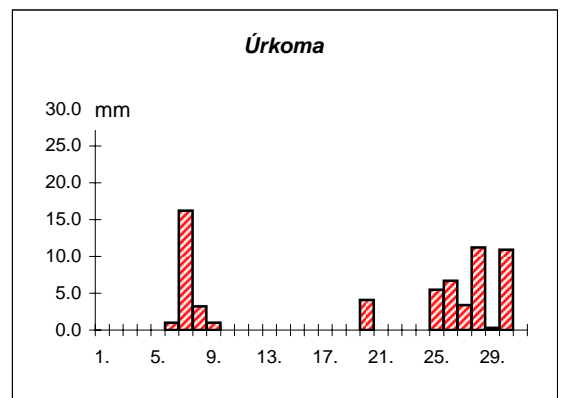
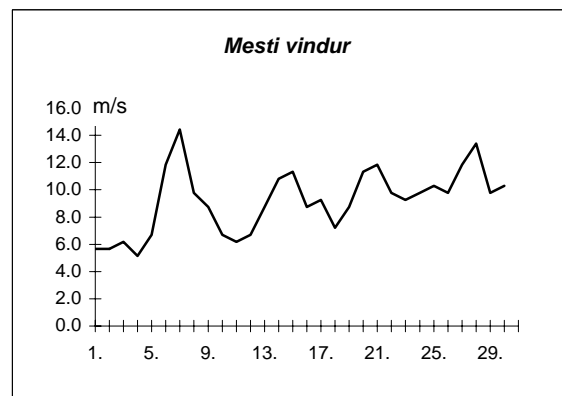
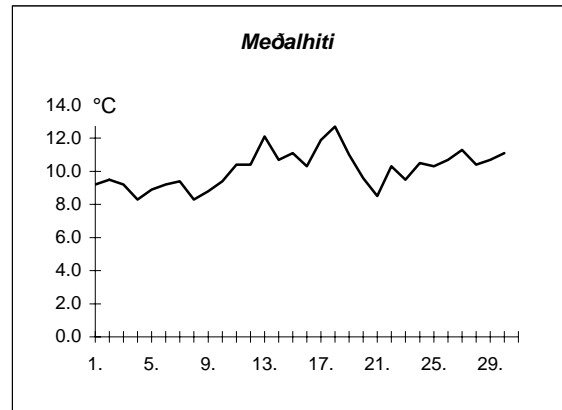
Dags	Meðalhiti (°C)	Hámark (°C)	Lágmark (°C)	Úrkoma (mm)	Úrkomutegund	Snjódypt (cm)	Snjóhula (0-4)	Sólskin (klst)	Meðalvindur (m/s)	Mesti vindur (m/s)	Hviða (m/s)
1.	7.4	10.7	5.3	---			0		2.3	4.6	7.2
2.	6.9	12.1	1.3	---			0		4.2	8.8	11.8
3.	6.1	9.8	3.1	---			0		4.0	8.8	12.9
4.	6.2	9.2	2.6	---			0		2.6	6.2	8.8
5.	8.2	13.2	2.5	0.0			0		3.1	7.2	11.3
6.	8.2	11.1	4.4	---			0		3.2	5.1	8.8
7.	9.2	10.7	8.0	2.8	ri		0		4.8	6.7	8.8
8.	8.6	10.0	7.2	3.1	ri		0		3.0	7.2	10.8
9.	11.8	17.1	5.6	6.7	ri		0		4.3	8.8	12.9
10.	11.1	16.6	7.8	0.1	ri		0		2.9	4.6	6.7
11.	10.1	14.3	5.0	---			0		2.1	6.7	7.7
12.	7.2	12.5	6.3	0.0			0		2.5	5.7	6.7
13.	6.2	9.5	3.6	0.1	ri		0		2.0	4.1	6.7
14.	11.0	15.6	4.9	0.0			0		4.1	11.3	15.4
15.	10.6	16.2	6.3	0.7	ri		0		4.8	9.8	13.4
16.	9.7	14.6	5.1	0.2	ri		0		2.9	5.7	8.2
17.	10.6	15.0	4.3	0.6	ri		0		2.1	6.2	8.2
18.	10.5	15.0	7.2	0.0			0		3.6	7.7	12.9
19.	10.9	14.6	10.0	4.5	ri		0		4.8	16.0	21.1
20.	8.7	10.7	8.3	3.0	ri		0		2.0	4.1	5.7
21.	7.3	9.5	6.5	16.7	ri		0		2.1	4.1	5.1
22.	7.6	9.6	5.1	2.9	ri		0		1.9	3.1	4.6
23.	10.5	14.6	3.2	0.1	ri		0		2.6	5.1	7.7
24.	11.0	14.0	6.4	---			0		2.9	6.2	8.8
25.	9.9	12.7	6.7	---			0		3.1	8.8	14.4
26.	13.8	17.6	9.4	3.3	ri		0		3.2	8.8	14.4
27.	11.2	17.8	9.2	---			0		1.6	4.6	6.2
28.	11.4	14.4	9.5	0.6	ri		0		2.9	7.2	11.3
29.	10.3	13.5	8.9	0.6	ri		0		1.9	4.1	5.7
30.	10.5	12.0	9.0	1.8	ri		0		2.5	5.7	8.2



Meðalhiti	=	9.4 °C
Meðalhámarkshiti	=	13.1 °C
Meðallágmarkshiti	=	6.1 °C
Úrkomumagn	=	47.8 mm
Meðalvindhraði	=	3.0 m/s

Útgefandi : **Veðurstofa Íslands**
 Heimilisfang : **Bústaðavegur 9**
150 Reykjavík

Dags	Meðalhiti (°C)	Hámark (°C)	Lágmark (°C)	Úrkoma (mm)	Úrkomutegund	Snjódýpt (cm)	Snjöhula (0-4)	Sólskin(klist)	Meðalvindur (m/s)	Mesti vindur (m/s)	Hviða (m/s)
1.	9.2	11.5	6.4	---			0		3.1	5.7	7.7
2.	9.5	12.7	7.6	---			0		3.6	5.7	7.7
3.	9.2	11.6	7.4	---			0		4.4	6.2	8.8
4.	8.3	11.7	4.9	---			0		3.8	5.1	7.7
5.	8.9	12.3	4.8	---			0		3.4	6.7	10.3
6.	9.2	10.8	7.8	1.0	ri		0		8.1	11.8	16.0
7.	9.4	11.2	7.4	16.2	ri		0		8.9	14.4	19.6
8.	8.3	10.8	7.3	3.2	ri		0		5.3	9.8	13.4
9.	8.8	10.2	7.1	1.0	ri		0		6.7	8.8	11.3
10.	9.4	11.1	6.5	---			0		4.4	6.7	8.8
11.	10.4	12.7	8.6	---			0		3.5	6.2	7.7
12.	10.4	12.9	7.2	---			0		3.4	6.7	8.2
13.	12.1	15.4	8.6	---			0		6.2	8.8	10.8
14.	10.7	14.4	8.3	---			0		5.5	10.8	14.4
15.	11.1	14.6	7.6	0.0			0		5.2	11.3	13.9
16.	10.3	13.7	7.2	---			0		5.6	8.8	10.3
17.	11.9	15.8	8.0	---			0		6.6	9.3	11.8
18.	12.7	15.7	8.8	---			0		3.9	7.2	10.8
19.	11.0	15.0	9.1	---			0		4.6	8.8	11.3
20.	9.6	13.3	8.8	4.1	ri		0		8.4	11.3	13.9
21.	8.5	12.2	5.3	0.0			0		8.2	11.8	14.4
22.	10.3	13.6	6.5	0.0			0		6.7	9.8	13.4
23.	9.5	13.4	7.6	---			0		6.0	9.3	11.8
24.	10.5	12.4	8.8	0.0			0		6.6	9.8	12.9
25.	10.3	11.3	9.4	5.5	ri		0		7.4	10.3	14.4
26.	10.7	12.5	8.9	6.7	ri		0		6.7	9.8	12.4
27.	11.3	12.6	10.0	3.4	ri		0		8.5	11.8	15.4
28.	10.4	11.9	9.5	11.2	ri		0		7.2	13.4	18.5
29.	10.7	13.5	7.2	0.3	ri		0		6.1	9.8	12.9
30.	11.1	13.7	9.1	10.9	ri		0		7.9	10.3	14.4



Meðalhiti	=	10.1 °C
Frávik frá meðaltali 1931-60	=	0.9 °C
Meðalhámarkshiti	=	12.8 °C
Meðallágmarkshiti	=	7.7 °C
Úrkomumagn	=	63.5 mm
Hlutfall úrkomu af meðaltali 1931-60	=	118.0 %
Meðalvindhraði	=	5.9 m/s