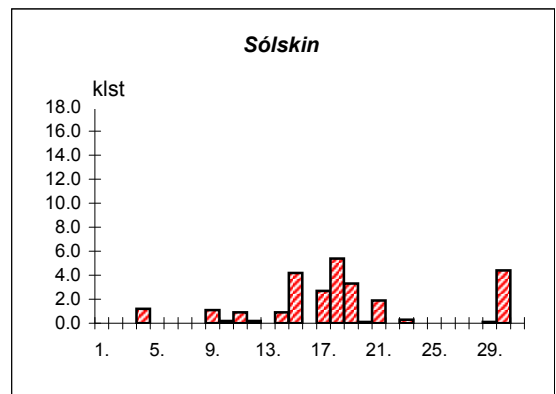
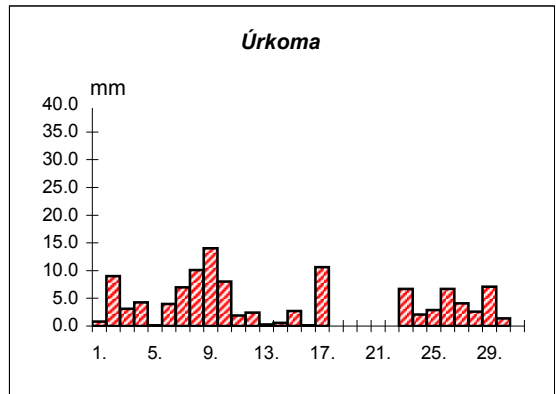
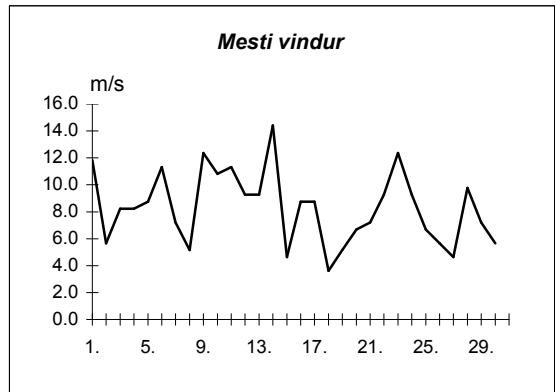
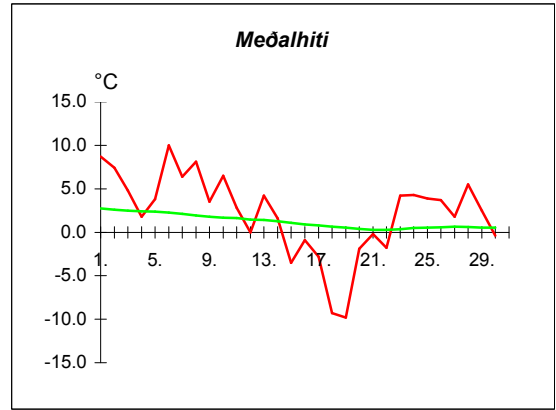
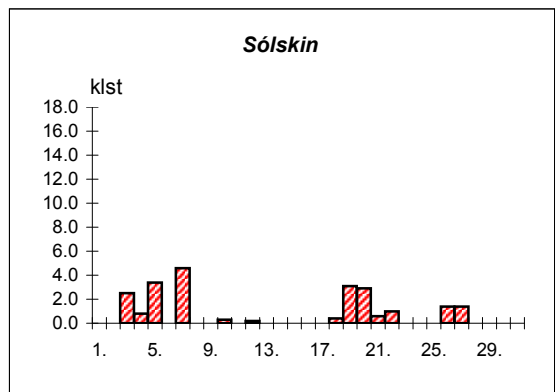
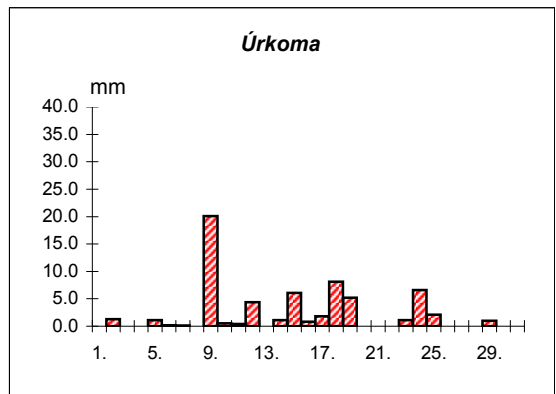
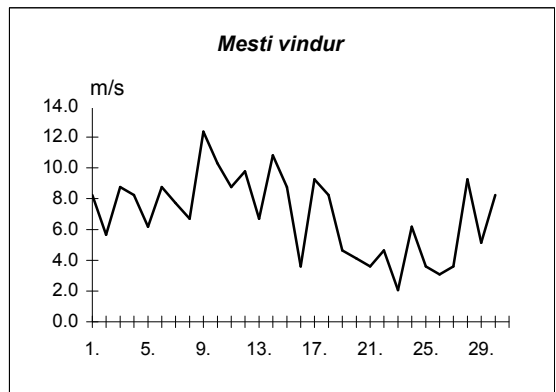
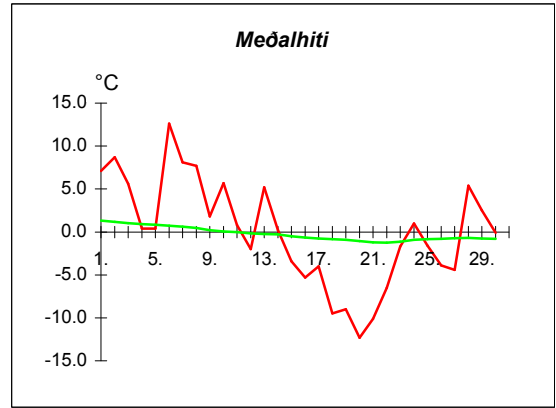


Dags	Meðalhiti (°C)	Hámark (°C)	Lágmark (°C)	Úrkoma (mm)	Úrkomutegund	Snjódýpt (cm)	Snjóhula (0-4)	Sólskin(klst)	Meðalvindur (m/s)	Mesti vindur (m/s)	Hviða (m/s)
1.	8.7	10.2	1.7	0.8	sl		0	0.0	6.9	11.8	18.5
2.	7.4	10.4	5.8	9.0	sl		0	0.0	4.1	5.7	9.8
3.	4.8	8.3	5.1	3.1	sl		0	0.0	2.6	8.2	13.9
4.	1.8	5.5	-0.9	4.3	sl		2	1.2	3.5	8.2	14.4
5.	3.8	6.8	-0.3	0.1	sl		0	0.0	6.1	8.8	20.1
6.	10.0	11.0	6.2	4.0	sl		0	0.0	7.7	11.3	15.4
7.	6.4	10.0	5.6	7.0	sl		0	0.0	3.3	7.2	13.4
8.	8.1	8.8	5.7	10.1	sl		0	0.0	2.0	5.1	7.7
9.	3.5	8.6	2.7	14.0	sl		0	1.1	5.1	12.4	17.5
10.	6.5	9.2	0.7	8.0	sl		0	0.2	7.6	10.8	16.0
11.	2.8	6.4	0.6	1.9	sl		0	0.9	7.2	11.3	19.0
12.	0.0	2.8	-4.9	2.4	sl	3	4	0.2	3.0	9.3	14.4
13.	4.2	6.7	1.1	0.3	ri		0	0.0	4.8	9.3	14.9
14.	1.6	6.0	0.9	0.6	sl		0	0.9	9.0	14.4	21.6
15.	-3.5	1.2	-5.4	2.7	sn	3	2	4.2	2.4	4.6	6.7
16.	-0.9	0.7	-5.0	0.1	sl	2	2	0.0	3.9	8.8	13.4
17.	-2.8	0.2	-3.8	10.6	sn	13	4	2.7	3.6	8.8	14.4
18.	-9.3	-3.7	-10.3	0.0		11	4	5.4	1.5	3.6	6.2
19.	-9.8	-8.6	-15.1	---		13	4	3.3	2.1	5.1	7.2
20.	-1.9	-0.5	-10.9	---		11	4	0.1	4.8	6.7	10.3
21.	-0.2	1.3	-3.3	---		10	4	1.9	4.7	7.2	11.3
22.	-1.8	-0.5	-4.1	---			4	0.0	4.8	9.3	13.4
23.	4.2	6.4	-1.2	6.7	sl	10	2	0.3	5.8	12.4	21.1
24.	4.3	6.4	2.7	2.1	ri		2	0.0	4.8	9.3	12.9
25.	3.9	4.8	2.6	2.9	ri		0	0.0	4.4	6.7	11.3
26.	3.7	4.7	3.3	6.7	ri		0	0.0	3.4	5.7	8.8
27.	1.8	3.6	-0.6	4.1	ri		0	0.0	1.8	4.6	6.7
28.	5.5	8.7	1.5	2.6	ri		0	0.0	5.4	9.8	14.9
29.	2.5	4.7	1.5	7.1	ri		0	0.1	3.6	7.2	11.8
30.	-0.4	3.4	-2.1	1.4	sl		0	4.4	2.6	5.7	8.2



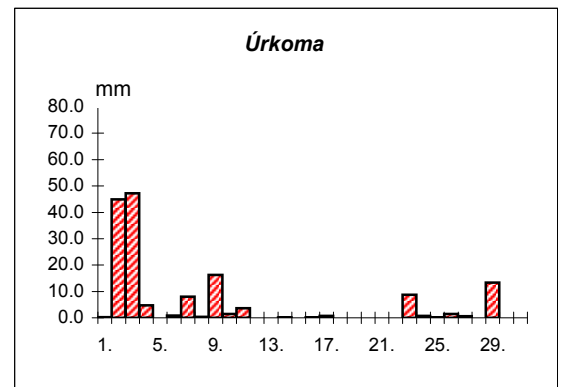
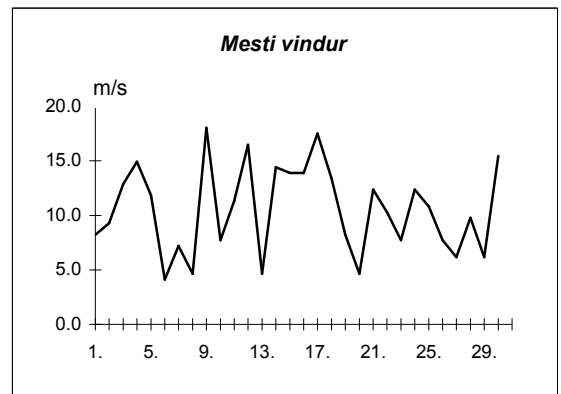
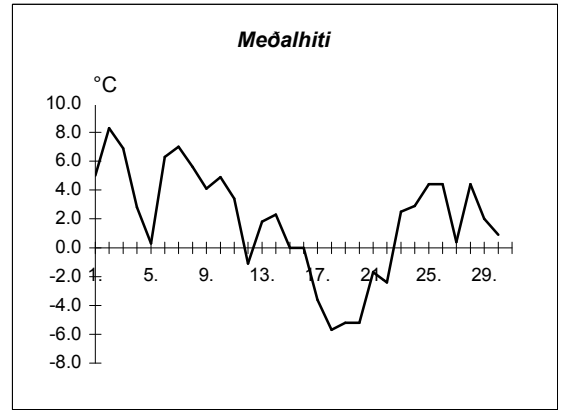
Meðalhiti	=	2.2 °C
Frávik frá meðaltali 1931-60	=	-0.4 °C
Meðalhámarkshiti	=	4.8 °C
Meðallágmarkshiti	=	-0.7 °C
Úrkomumagn	=	112.6 mm
Hlutfall úrkomu af meðaltali 1931-60	=	132.0 %
Meðalvindhraði	=	4.4 m/s
Sólskinsstundir	=	26.9 klst

Dags	Meðalhiti (°C)	Hámark (°C)	Lágmark (°C)	Úrkoma (mm)	Úrkomutegund	Snjódýpt (cm)	Snjóhula (0-4)	Sólskin(klst)	Meðalvindur (m/s)	Mesti vindur (m/s)	Hviða (m/s)
1.	7.1	10.0	-3.4	---			0	0.0	3.8	8.2	15.4
2.	8.7	11.8	7.2	1.3	sl		0	0.0	2.7	5.7	11.3
3.	5.6	7.7	3.5	0.0			0	2.5	2.5	8.8	13.9
4.	0.4	6.0	-1.0	0.0			0	0.8	3.6	8.2	13.9
5.	0.4	1.0	-3.5	1.1	sl	2	2	3.4	2.7	6.2	11.8
6.	12.6	17.5	-1.0	0.2	sl		0	0.0	4.7	8.8	15.4
7.	8.1	15.2	5.4	0.1	sl		0	4.6	2.0	7.7	11.8
8.	7.7	10.6	4.2	---			0	0.0	2.9	6.7	12.9
9.	1.8	7.4	0.8	20.1	sl		0	0.0	6.5	12.4	18.0
10.	5.7	10.0	-0.3	0.5	sl		0	0.3	4.6	10.3	18.0
11.	0.8	6.2	-1.0	0.4	sl		0	0.0	3.5	8.8	11.8
12.	-2.0	-1.0	-5.6	4.4	sl		0	0.2	3.1	9.8	13.9
13.	5.2	8.1	-1.1	0.0			0	0.0	4.4	6.7	13.9
14.	0.2	8.5	-2.0	1.1	sl	2	2	0.0	5.9	10.8	19.0
15.	-3.4	0.0	-5.2	6.1	sn	7	4	0.0	2.7	8.8	13.4
16.	-5.3	-2.0	-8.4	0.8	sn	7	4	0.0	1.2	3.6	7.7
17.	-4.0	-1.5	-5.4	1.8	sn	7	4	0.0	4.1	9.3	17.5
18.	-9.5	-4.6	-11.4	8.1	sn	13	4	0.4	3.0	8.2	13.4
19.	-9.0	-6.8	-13.9	5.2	sn	28	4	3.1	2.8	4.6	6.7
20.	-12.3	-7.0	-14.5	---		28	4	2.9	1.7	4.1	6.7
21.	-10.1	-8.0	-15.0	---		27	4	0.6	2.1	3.6	5.1
22.	-6.5	-4.5	-8.7	0.0		27	4	1.0	2.0	4.6	7.7
23.	-1.7	0.8	-7.0	1.1	sn	28	4	0.0	0.8	2.1	3.1
24.	1.0	3.0	-2.5	6.6	sl	19	4	0.0	2.6	6.2	11.3
25.	-1.6	1.0	-4.2	2.1	sn	15	4	0.0	1.5	3.6	5.7
26.	-3.9	1.0	-5.5	---		15	4	1.4	1.1	3.1	5.1
27.	-4.4	-3.0	-5.5	---		15	4	1.4	1.8	3.6	5.7
28.	5.4	8.9	-6.0	0.0		13	4	0.0	4.7	9.3	18.5
29.	2.5	8.2	0.5	1.0	ri	8	4	0.0	2.3	5.1	9.8
30.	-0.1	2.5	-2.0	0.0		8	4	0.0	4.0	8.2	12.4



Meðalhiti	=	0.0 °C
Frávik frá meðaltali 1931-60	=	-1.3 °C
Meðalhámarkshiti	=	3.6 °C
Meðallágmarkshiti	=	-3.8 °C
Úrkomumagn	=	62.0 mm
Hlutfall úrkomu af meðaltali 1931-60	=	138.0 %
Meðalvindhraði	=	3.0 m/s
Sólskinsstundir	=	22.6 klst

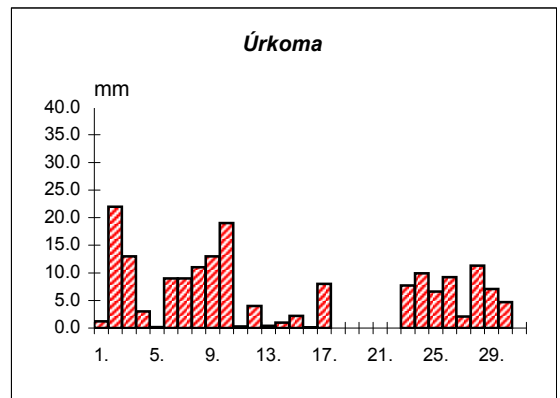
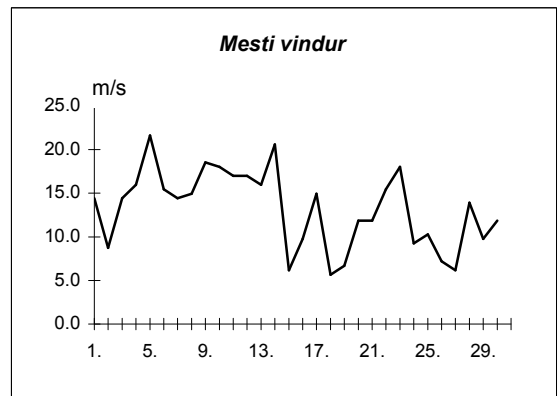
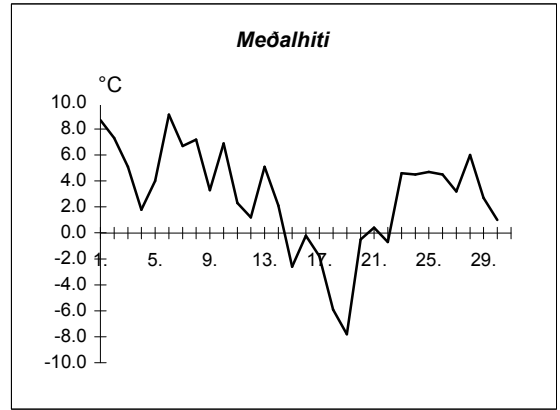
Dags	Meðalhiti (°C)	Hámark (°C)	Lágmark (°C)	Úrkoma (mm)	Úrkomutegund	Snjódypt (cm)	Snjóhula (0-4)	Sólskin(klst)	Meðalvindur (m/s)	Mesti vindur (m/s)	Hviða (m/s)
1.	5.0	8.6	-0.5	0.3	sl		0		3.9	8.2	10.8
2.	8.3	9.5	6.6	44.9	sl		0		6.1	9.3	13.4
3.	6.9	9.1	6.1	47.2	sl		0		6.2	12.9	18.0
4.	2.8	6.7	-0.3	4.7	sl		0		7.4	14.9	22.1
5.	0.3	4.3	-1.7	---			0		2.8	11.8	10.8
6.	6.3	8.3	-0.2	0.9	sl		0		2.1	4.1	5.1
7.	7.0	10.7	3.7	8.0	sl		0		2.0	7.2	10.3
8.	5.6	8.1	4.3	0.4	ri		0		1.5	4.6	6.2
9.	4.1	7.5	2.4	16.3	sl		0		7.1	18.0	27.8
10.	4.9	7.7	-0.5	1.5	sl		0		3.6	7.7	11.8
11.	3.4	6.6	1.8	3.7	sl		0		4.9	11.3	17.0
12.	-1.1	2.7	-3.6	---			0		6.1	16.5	23.2
13.	1.8	4.5	-3.4	---			0		2.6	4.6	6.2
14.	2.3	6.2	1.1	0.1	ri		0		9.0	14.4	22.1
15.	0.0	2.6	-1.8	---			0		7.2	13.9	20.6
16.	0.0	1.2	-2.3	0.1	sn	0	2		5.7	13.9	23.2
17.	-3.6	1.0	-4.7	0.7	sn	3	2		9.6	17.5	25.7
18.	-5.7	-3.3	-6.5	0.0		2	2		8.3	13.4	19.6
19.	-5.2	-3.0	-6.6	---		2	2		3.3	8.2	11.3
20.	-5.2	-3.5	-7.7	---		2	2		2.6	4.6	6.2
21.	-1.7	0.5	-5.3	---		2	2		6.9	12.4	14.9
22.	-2.4	-0.8	-4.3	---		2	2		4.5	10.3	15.4
23.	2.5	6.0	-3.7	8.7	sl	9	4		2.9	7.7	11.3
24.	2.9	6.4	1.6	0.7	sl		2		7.0	12.4	14.9
25.	4.4	5.0	1.1	0.1	sl		2		7.1	10.8	16.5
26.	4.4	6.0	3.7	1.4	ri		0		6.1	7.7	12.4
27.	0.4	5.4	-1.8	0.6	ri		0		2.4	6.2	8.8
28.	4.4	7.7	-1.7	---			0		3.1	9.8	13.9
29.	2.0	7.6	0.8	13.4	ri		0		1.3	6.2	7.2
30.	0.9	4.5	-0.4	---			0		6.2	15.4	21.6



Meðalhiti	=	1.9 °C
Meðalhámarkshiti	=	4.8 °C
Meðallágmarkshiti	=	-0.8 °C
Úrkomumagn	=	153.7 mm
Meðalvindhraði	=	5.0 m/s

Útgefandi : **Veðurstofa Íslands**
 Heimilisfang : **Bústaðavegur 9**
150 Reykjavík

Dags	Meðalhiti (°C)	Hámark (°C)	Lágmark (°C)	Úrkoma (mm)	Úrkomutegund	Snjódýpt (cm)	Snjóhula (0-4)	Sólskin(klist)	Meðalvindur (m/s)	Mesti vindur (m/s)	Hviða (m/s)
1.	8.7	9.7	3.1	1.2	sl		0		8.4	14.4	20.6
2.	7.3	10.9	6.1	22.0	sl		0		6.1	8.8	11.8
3.	5.1	9.3	5.4	13.0	sl		0		5.6	14.4	19.6
4.	1.8	7.0	-1.9	3.0	sl	2	4		6.6	16.0	20.6
5.	4.0	6.8	-0.3	0.2	sl		0		11.5	21.6	30.4
6.	9.1	11.0	5.7	9.0	sl		0		10.2	15.4	21.1
7.	6.7	10.9	6.0	9.0	sl		0		6.2	14.4	18.5
8.	7.2	8.6	6.1	11.0	sl		0		5.0	14.9	18.0
9.	3.3	9.7	2.0	13.0	sl		0		9.1	18.5	22.7
10.	6.9	9.8	0.6	19.0	sl		0		13.9	18.0	25.7
11.	2.3	8.2	0.3	0.3	sl		0		12.9	17.0	23.2
12.	1.2	4.4	-4.7	4.0	sl	8	4		5.6	17.0	21.6
13.	5.1	7.1	2.8	0.4	sl	3	2		9.3	16.0	22.1
14.	2.1	8.5	-0.3	1.0	sl		2		14.0	20.6	29.9
15.	-2.6	3.3	-4.5	2.2	sn	1	2		2.6	6.2	8.8
16.	-0.2	2.1	-3.5	0.1	sl	1	2		4.6	9.8	12.4
17.	-1.8	3.1	-3.0	8.0	sl	3	4		6.9	14.9	19.6
18.	-5.9	-1.7	-7.0	0.0		4	4		3.7	5.7	8.2
19.	-7.8	-4.3	-11.1	---		4	4		3.1	6.7	7.7
20.	-0.5	0.7	-7.0	0.0		4	4		6.9	11.8	15.4
21.	0.4	3.5	-0.1	0.0		4	4		8.9	11.8	14.9
22.	-0.7	1.5	-4.7	---		4	2		6.7	15.4	19.6
23.	4.6	7.8	-0.3	7.7	sl		0		7.4	18.0	23.2
24.	4.5	7.2	2.5	9.9	ri		0		4.8	9.3	11.3
25.	4.7	7.0	3.2	6.6	ri		0		5.9	10.3	15.4
26.	4.5	6.7	3.1	9.2	ri		0		5.0	7.2	9.3
27.	3.2	5.7	2.4	2.1	ri		0		3.6	6.2	8.2
28.	6.0	9.8	2.0	11.3	ri		0		9.1	13.9	19.6
29.	2.7	6.2	1.5	7.1	sl		0		6.4	9.8	13.9
30.	1.0	4.3	0.0	4.7	sl		0		6.8	11.8	15.4



Meðalhiti	=	2.8 °C
Frávik frá meðaltali 1931-60	=	-0.1 °C
Meðalhámarkshiti	=	6.2 °C
Meðallágmarkshiti	=	0.2 °C
Úrkomumagn	=	175.0 mm
Hlutfall úrkomu af meðaltali 1931-60	=	150.0 %
Meðalvindhraði	=	7.2 m/s