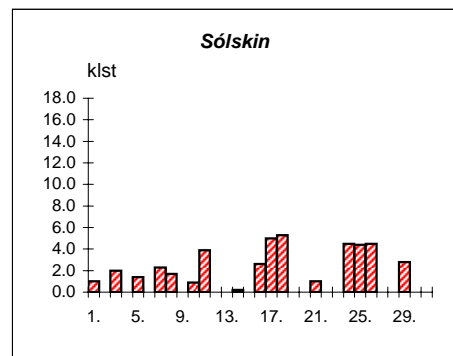
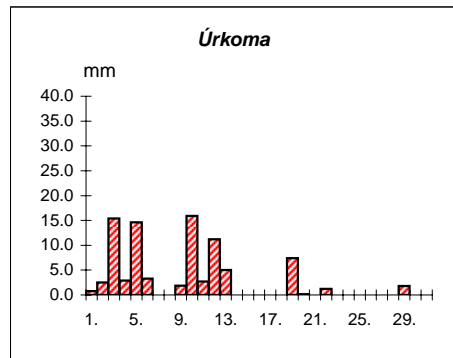
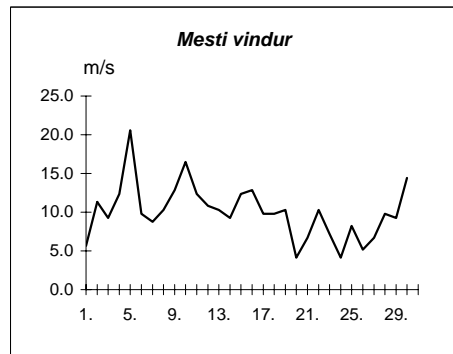
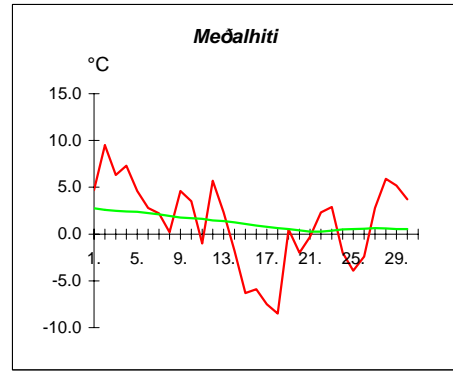


Reykjavík nóvember 2006

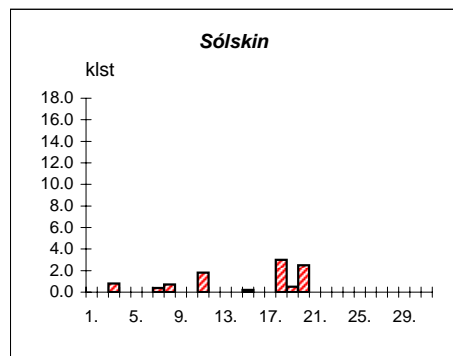
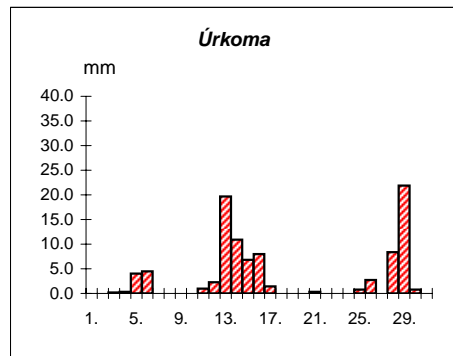
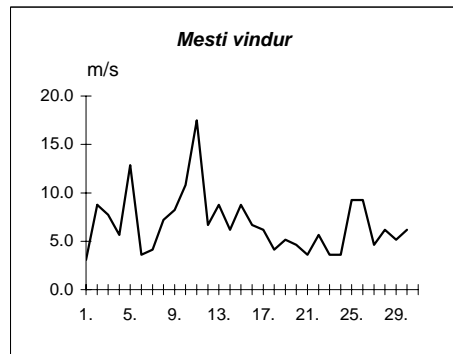
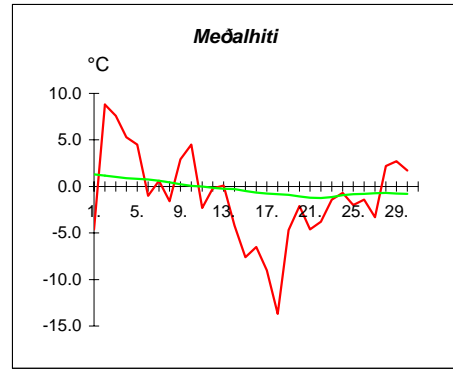
Dags	Meðalhiti (°C)	Hámark (°C)	Lágmark (°C)	Úrkoma (mm)	Úríkomutegund	Snjódýpt (cm)	Snjöhula (0-4)	Sólskin(klst)	Meðalvindur (m/s)	Mesti vindur (m/s)	Hviða (m/s)
1.	4.7	6.2	-2.2	0.8	ri		0	1.0	3.1	5.7	8.2
2.	9.5	10.5	5.3	2.5	ri		0	0.0	6.7	11.3	18.0
3.	6.3	10.8	4.4	15.4	ri		0	2.0	4.3	9.3	12.9
4.	7.3	10.6	4.1	2.9	ri		0	0.0	6.7	12.4	20.6
5.	4.6	10.6	1.5	14.6	ri		0	1.4	10.3	20.6	30.4
6.	2.8	4.7	1.9	3.3	sl		0	0.0	4.9	9.8	29.9
7.	2.2	4.2	1.2	0.0			0	2.3	4.7	8.8	13.9
8.	0.2	1.8	-0.6	0.0			0	1.7	3.6	10.3	15.4
9.	4.6	6.6	-3.9	1.9	sl		0	0.0	6.8	12.9	21.1
10.	3.5	9.7	0.3	15.9	ri		0	0.9	12.4	16.5	24.7
11.	-1.0	1.7	-2.0	2.7	sl	1	2	3.9	5.7	12.4	20.6
12.	5.7	9.1	-2.1	11.2	sl		0	0.0	5.2	10.8	18.0
13.	2.3	6.0	1.0	5.0	ri		0	0.0	4.8	10.3	16.5
14.	-1.8	1.6	-3.8	0.0			0	0.2	3.2	9.3	16.5
15.	-6.3	-3.3	-6.9	---			0	0.0	6.2	12.4	21.1
16.	-5.9	-4.3	-7.8	---			0	2.6	10.3	12.9	23.2
17.	-7.5	-5.0	-8.1	---			0	5.0	5.1	9.8	16.5
18.	-8.5	-7.1	-13.6	---			0	5.3	4.4	9.8	13.9
19.	0.5	3.1	-8.8	7.4	sn	20	4	0.0	6.5	10.3	16.0
20.	-2.0	4.4	-2.7	0.1	sn	16	4	0.0	1.9	4.1	6.7
21.	-0.3	2.1	-5.7	---		14	4	1.0	3.5	6.7	10.8
22.	2.3	4.2	1.5	1.2	sl	9	2	0.0	6.7	10.3	16.5
23.	2.9	5.2	1.0	---		8	2	0.0	3.6	7.2	12.9
24.	-2.0	4.0	-3.3	---		8	4	4.5	1.3	4.1	7.7
25.	-3.9	-2.1	-6.1	---		8	4	4.4	2.5	8.2	15.4
26.	-2.4	-0.7	-4.6	---		7	4	4.5	2.2	5.1	8.2
27.	2.8	4.5	-1.7	---		7	4	0.0	4.4	6.7	11.3
28.	5.9	8.1	2.3	0.0		1	2	0.0	4.8	9.8	17.5
29.	5.2	8.4	4.0	1.8	sl		0	2.8	4.5	9.3	17.0
30.	3.7	5.7	1.9	0.0			0	0.0	6.9	14.4	21.1

Meðalhiti	=	1.2 °C
Frávik frá meðaltali 1931-60	=	-1.4 °C
Meðalhámarkshiti	=	4.0 °C
Meðallágmarkshiti	=	-1.8 °C
Úrkomumagn	=	86.7 mm
Hlutfall úrkomu af meðaltali 1931-60	=	102.0 %
Meðalvindhraði	=	5.3 m/s
Sólskinsstundir	=	43.5 klst



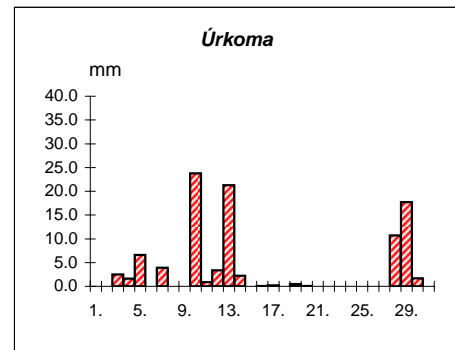
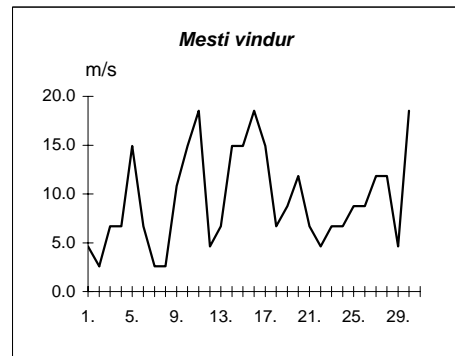
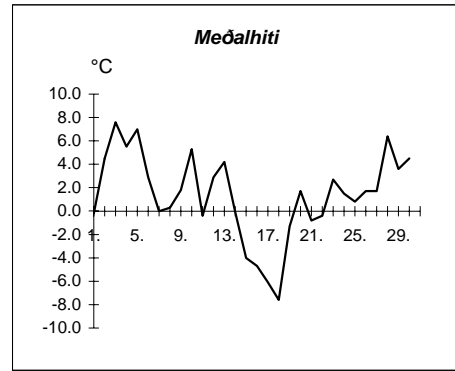
Akureyri nóvember 2006

Dags	Meðalhiti (°C)	Hámark (°C)	Lágmark (°C)	Úrkoma (mm)	Úríkomutegund	Snjóþýpt (cm)	Snjóhula (0-4)	Sólskin(klst)	Meðalvindur (m/s)	Mesti vindur (m/s)	Hviða (m/s)
1.	-4.6	-1.6	-9.2	---			0	0.0	1.2	3.1	4.6
2.	8.8	10.9	-1.8	---			0	0.0	4.3	8.8	17.0
3.	7.6	11.8	6.0	0.2	ri		0	0.8	2.6	7.7	16.5
4.	5.3	7.0	4.2	0.3	ri		0	0.0	2.7	5.7	10.8
5.	4.5	12.4	2.0	4.0	ri		0	0.0	5.7	12.9	26.3
6.	-1.0	2.5	-2.7	4.5	sl		0	0.0	1.1	3.6	6.2
7.	0.6	2.4	-1.8	0.0			0	0.4	2.0	4.1	7.2
8.	-1.6	1.2	-3.4	---			0	0.7	1.8	7.2	11.8
9.	2.9	7.0	-3.3	0.0			0	0.0	4.9	8.2	16.5
10.	4.5	10.8	1.4	0.0			0	0.0	6.6	10.8	19.0
11.	-2.3	1.6	-4.5	1.0	sl	2	2	1.8	7.1	17.5	24.7
12.	-0.2	2.0	-4.5	2.3	sn	5	4	0.0	1.8	6.7	10.3
13.	0.1	3.0	-0.5	19.7	sl	6	4	0.0	5.6	8.8	14.9
14.	-4.2	-0.5	-5.0	10.9	sl	17	4	0.0	3.1	6.2	11.3
15.	-7.6	-4.8	-9.1	6.8	sn	32	4	0.2	2.9	8.8	14.9
16.	-6.5	-5.0	-9.0	8.0	sl	37	4	0.0	3.1	6.7	13.4
17.	-9.0	-5.5	-9.5	1.4	sn		0	0.0	2.2	6.2	11.3
18.	-13.7	-5.5	-15.2	0.0		37	4	3.0	2.3	4.1	6.2
19.	-4.7	-2.6	-14.1	---		37	4	0.5	2.3	5.1	8.8
20.	-2.1	-1.2	-4.5	---		32	4	2.5	1.7	4.6	8.2
21.	-4.6	0.5	-8.5	0.3	sn	30	4	0.0	1.6	3.6	7.7
22.	-3.8	-1.7	-9.9	---		28	4	0.0	1.5	5.7	10.3
23.	-1.4	1.0	-5.4	---		28	4	0.0	1.4	3.6	8.2
24.	-0.7	1.3	-1.5	---		25	4	0.0	1.1	3.6	7.2
25.	-2.0	-0.6	-4.1	0.8	sn	27	4	0.0	4.2	9.3	13.9
26.	-1.4	-0.2	-2.9	2.7	sn	30	4	0.0	4.1	9.3	13.4
27.	-3.3	-0.9	-5.7	---		30	4	0.0	1.8	4.6	7.2
28.	2.2	4.6	-3.2	8.4	sl	33	4	0.0	3.9	6.2	9.8
29.	2.7	6.4	1.8	21.9	sl	25	4	0.0	1.8	5.1	9.3
30.	1.7	3.5	0.6	0.8	ri	20	4	0.0	3.4	6.2	11.8



Meðalhiti	=	-1.1 °C
Frávik frá meðaltali 1931-60	=	-2.4 °C
Meðalhámarkshiti	=	2.0 °C
Meðallágmarkshiti	=	-4.1 °C
Úrkomumagn	=	94.0 mm
Hlutfall úrkomu af meðaltali 1931-60	=	209.0 %
Meðalvindhraði	=	3.0 m/s
Sólskinsstundir	=	9.9 klst

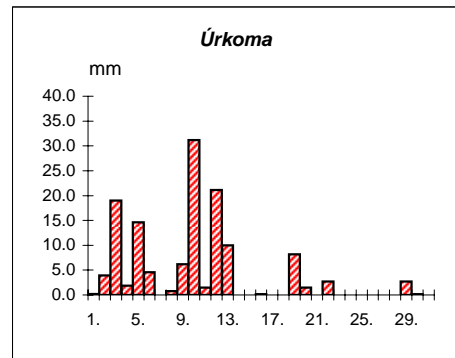
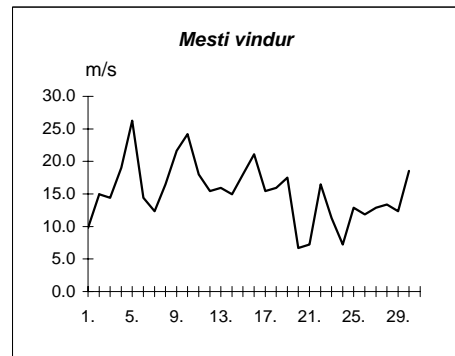
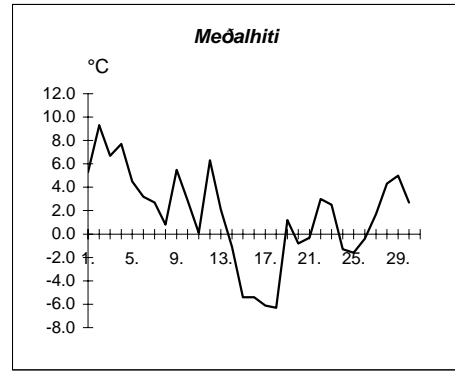
Dags	Meðalhiti (°C)	Hámark (°C)	Lágmark (°C)	Úrkoma (mm)	Úrkomutegund	Snjódýpt (cm)	Snjöhula (0-4)	Sólskin(klst)	Meðalvindur (m/s)	Mesti vindur (m/s)	Hviða (m/s)
1.	-0.2	1.9	-3.6	---			0		2.3	4.6	
2.	4.5	7.7	0.3	---			0		0.9	2.6	
3.	7.6	9.3	6.8	2.5	ri		0		5.4	6.7	
4.	5.5	7.1	5.0	1.6	ri		0		2.3	6.7	
5.	7.0	10.2	3.4	6.6	ri		0		11.6	14.9	
6.	2.9	6.6	1.7	---			0		0.9	6.7	
7.	0.0	2.5	-1.6	3.9	sl		0		1.9	2.6	
8.	0.3	1.5	-1.9	---			0		2.0	2.6	
9.	1.8	4.5	-3.2	---			0		3.7	10.8	
10.	5.3	9.2	3.5	23.8	sl		0		9.5	14.9	
11.	-0.4	4.4	-1.5	0.9	ri		0		9.2	18.5	
12.	2.9	7.4	-4.2	3.4	sl	0	4		1.3	4.6	
13.	4.2	5.8	3.3	21.3	ri		0		4.6	6.7	
14.	-0.1	4.4	-1.7	2.2	ri		0		12.4	14.9	
15.	-4.0	-1.2	-4.6	---			0		11.5	14.9	
16.	-4.7	-2.7	-6.5	0.1	sn	0	2		15.9	18.5	
17.	-6.1	-2.8	-6.6	0.2	sn	0	2		8.5	14.9	
18.	-7.6	-6.0	-7.9	0.0		0	2		4.9	6.7	
19.	-1.3	2.5	-9.0	0.5	sn	2	4		4.3	8.8	
20.	1.7	3.3	0.0	0.1	sn		2		8.2	11.8	
21.	-0.8	3.0	-3.0	0.0			0		3.1	6.7	
22.	-0.4	0.8	-3.3	0.0			0		3.6	4.6	
23.	2.7	3.7	0.2	0.0			0		4.7	6.7	
24.	1.5	3.6	1.4	0.0			0		4.0	6.7	
25.	0.8	2.6	-0.6	---			0		7.5	8.8	
26.	1.7	2.7	1.1	---			0		5.6	8.8	
27.	1.7	4.5	-1.0	---			0		6.7	11.8	
28.	6.4	7.9	1.0	10.7	sl		0		5.6	11.8	
29.	3.6	7.9	1.6	17.7	ri		0		1.3	4.6	
30.	4.5	6.7	0.3	1.7	ri		0		7.2	18.5	



Meðalhiti	=	1.4 °C
Meðalhámarkshiti	=	4.0 °C
Meðallágmarkshiti	=	-1.0 °C
Úrkomumagn	=	97.2 mm
Meðalvindhraði	=	5.7 m/s

Útgefandi : **Veðurstofa Íslands**
 Heimilisfang : **Bústaðavegur 9**
150 Reykjavík

Dags	Meðalhiti (°C)	Hámark (°C)	Lágmark (°C)	Úrkoma (mm)	Úrkomutegund	Snjódýpt (cm)	Snjöhula (0-4)	Sólskin(klst)	Meðalvindur (m/s)	Mesti vindur (m/s)	Hviða (m/s)
1.	5.3	7.3	-1.4	0.2	ri		0		4.9	9.8	12.4
2.	9.3	9.7	5.5	3.9	ri		0		10.9	14.9	20.1
3.	6.7	10.1	5.5	19.0	ri		0		8.4	14.4	21.6
4.	7.7	10.6	4.8	1.9	ri		0		10.2	19.0	23.7
5.	4.5	11.1	2.8	14.6	ri		0		15.2	26.3	38.6
6.	3.2	5.1	1.8	4.6	sl		0		8.1	14.4	19.0
7.	2.7	4.5	0.6	0.0			0		7.1	12.4	18.5
8.	0.8	3.7	-0.1	0.8	sn	0	2		7.2	16.5	21.6
9.	5.5	7.1	-2.3	6.2	sl		0		10.8	21.6	31.4
10.	2.9	10.0	0.2	31.2	ri		0		16.9	24.2	32.9
11.	0.1	2.1	-2.6	1.5	sl	3	2		7.4	18.0	22.7
12.	6.3	9.5	1.2	21.1	sl		0		7.2	15.4	22.1
13.	2.1	6.5	0.8	10.0	sl		0		12.5	16.0	22.7
14.	-1.1	2.3	-2.8	0.0			0		11.7	14.9	22.1
15.	-5.4	-1.8	-6.0	---			0		11.6	18.0	26.3
16.	-5.4	-1.4	-7.2	0.1	sn		0		16.2	21.1	28.8
17.	-6.1	-2.8	-6.6	0.0			0		9.4	15.4	21.1
18.	-6.3	-4.2	-12.2	0.0			0		7.0	16.0	21.6
19.	1.2	2.8	-7.3	8.2	sl	11	4		10.2	17.5	25.2
20.	-0.8	5.5	-2.6	1.5	sl	10	4		3.6	6.7	9.3
21.	-0.3	3.1	-6.0	---		8	4		4.4	7.2	9.8
22.	3.0	4.3	1.8	2.7	sl		2		11.7	16.5	23.2
23.	2.5	4.7	1.8	0.0			0		7.3	11.3	14.4
24.	-1.3	3.2	-2.4	0.0			0		3.0	7.2	9.8
25.	-1.6	0.7	-4.7	---			0		7.2	12.9	15.4
26.	-0.4	5.5	-2.1	---			0		6.6	11.8	14.9
27.	1.7	2.8	-1.1	---			0		9.4	12.9	17.5
28.	4.3	4.7	1.0	0.0			0		10.3	13.4	19.0
29.	5.0	7.0	3.0	2.7	sl		0		7.1	12.4	15.4
30.	2.7	5.0	0.4	0.1	ri		0		11.8	18.5	23.7



Meðalhiti	=	1.6 °C
Frávik frá meðaltali 1931-60	=	-1.2 °C
Meðalhámarkshiti	=	4.6 °C
Meðallágmarkshiti	=	-1.2 °C
Úrkomumagn	=	130.3 mm
Hlutfall úrkomu af meðaltali 1931-60	=	111.0 %
Meðalvindhraði	=	9.2 m/s