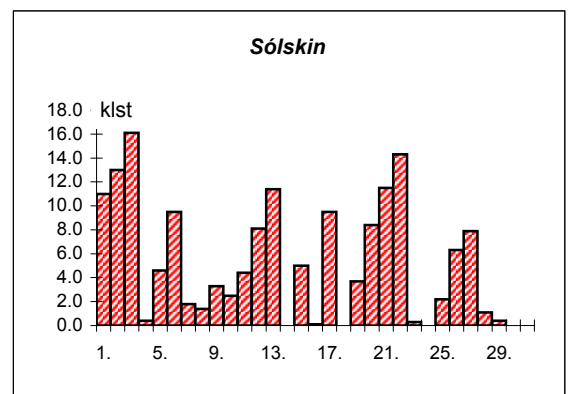
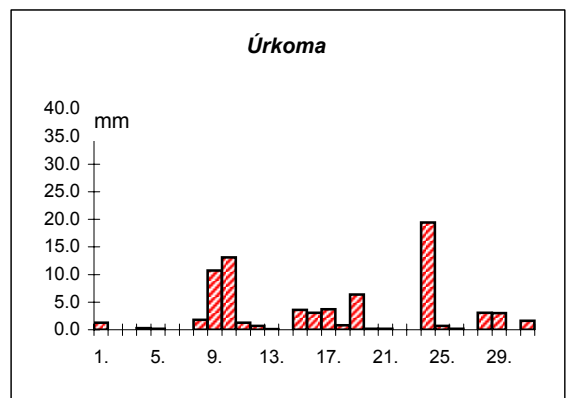
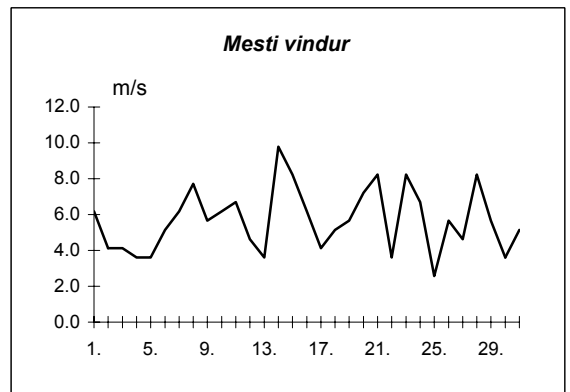
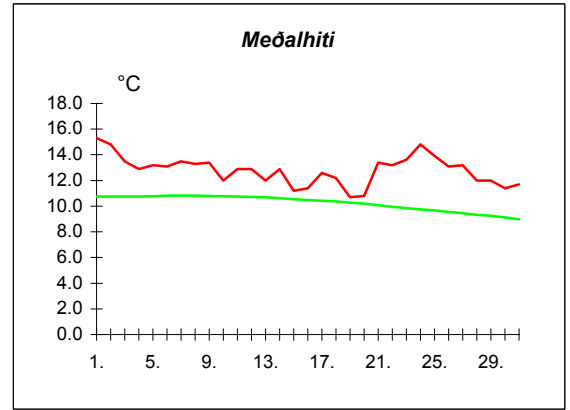
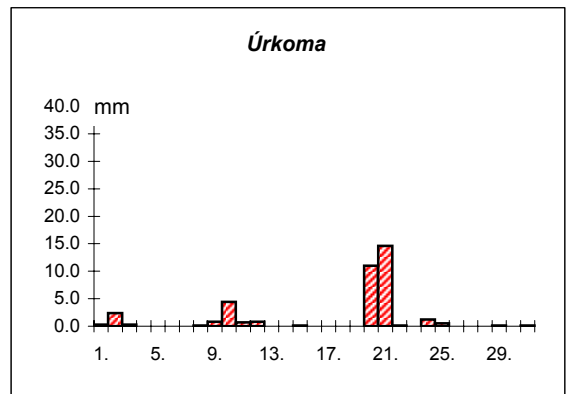
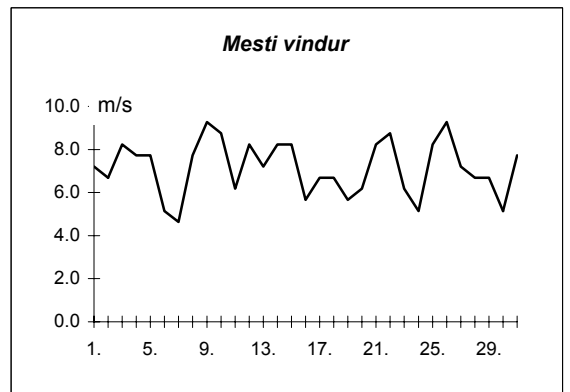
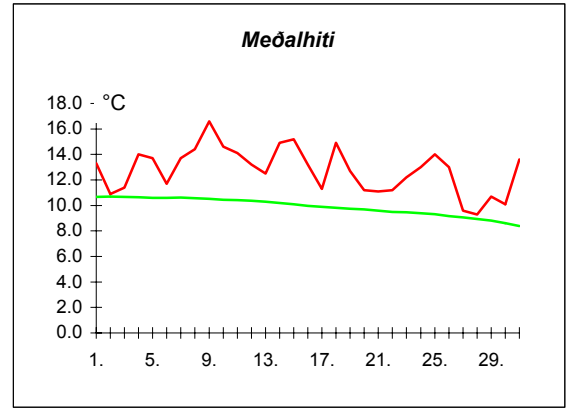


Dags	Meðalhiti (°C)	Hámark (°C)	Lágmark (°C)	Úrkoma (mm)	Úrkomutegund	Snjódýpt (cm)	Snjöhula (0-4)	Sólskin(klst)	Meðalvindur (m/s)	Mesti vindur (m/s)	Hviða (m/s)
1.	15.3	20.0	10.0	1.3	ri		0	11.0	2.5	6.2	10.3
2.	14.8	19.5	11.1	0.0			0	13.0	1.8	4.1	6.2
3.	13.5	17.5	10.4	---			0	16.1	2.0	4.1	5.7
4.	12.9	15.7	10.7	0.3	ri		0	0.4	1.7	3.6	5.1
5.	13.2	15.4	11.4	0.2	ri		0	4.6	1.8	3.6	5.7
6.	13.1	15.7	10.7	---			0	9.5	2.0	5.1	6.7
7.	13.5	16.0	9.0	---			0	1.8	2.7	6.2	10.3
8.	13.3	15.7	12.7	1.8	ri		0	1.4	4.4	7.7	11.8
9.	13.4	16.7	11.6	10.7	ri		0	3.3	3.0	5.7	9.3
10.	12.0	14.6	9.7	13.1	ri		0	2.5	3.6	6.2	9.8
11.	12.9	15.5	10.9	1.3	ri		0	4.4	3.4	6.7	9.8
12.	12.9	15.7	10.4	0.7	ri		0	8.1	2.3	4.6	6.7
13.	12.0	14.7	8.6	0.1	ri		0	11.4	2.0	3.6	5.7
14.	12.9	14.8	10.8	0.0			0	0.0	6.3	9.8	14.4
15.	11.2	14.3	9.2	3.6	ri		0	5.0	4.9	8.2	11.8
16.	11.4	13.3	9.7	3.1	ri		0	0.1	2.8	6.2	9.3
17.	12.6	16.5	8.1	3.7	ri		0	9.5	1.2	4.1	5.1
18.	12.2	14.6	11.2	0.8	ri		0	0.0	3.8	5.1	9.3
19.	10.7	14.0	8.4	6.4	ri		0	3.7	2.7	5.7	8.8
20.	10.8	13.5	6.6	0.2	ri		0	8.4	3.4	7.2	12.4
21.	13.4	16.6	10.9	0.2	ri		0	11.5	3.4	8.2	11.8
22.	13.2	17.4	8.0	---			0	14.3	1.8	3.6	5.1
23.	13.6	17.4	11.3	---			0	0.3	4.7	8.2	12.4
24.	14.8	17.3	11.3	19.4	ri		0	0.0	3.3	6.7	9.8
25.	13.9	16.9	12.2	0.7	ri		0	2.2	1.4	2.6	4.1
26.	13.1	14.5	12.4	0.2	ri		0	6.3	3.7	5.7	8.2
27.	13.2	17.1	11.5	0.0			0	7.9	2.8	4.6	7.2
28.	12.0	15.4	11.0	3.1	ri		0	1.1	4.0	8.2	11.8
29.	12.0	12.7	11.0	3.0	ri		0	0.4	3.0	5.7	8.8
30.	11.4	12.2	10.2	0.0			0	0.0	1.8	3.6	5.1
31.	11.7	12.9	11.3	1.6	ri		0	0.0	3.0	5.1	7.7

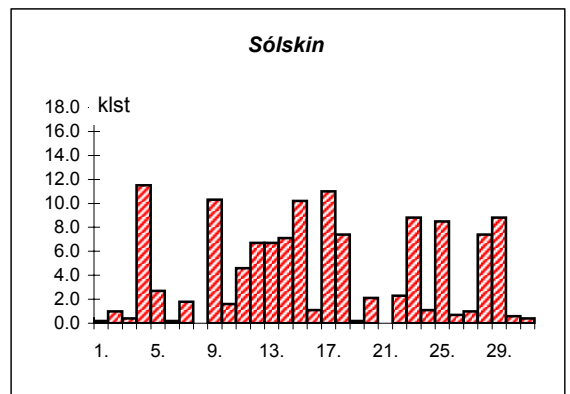


Meðalhiti	=	12.8 °C
Frávik frá meðaltali 1931-60	=	2.0 °C
Meðalhámarkshiti	=	15.6 °C
Meðallágmarkshiti	=	10.4 °C
Úrkomumagn	=	75.5 mm
Hlutfall úrkomu af meðaltali 1931-60	=	114.0 %
Meðalvindhraði	=	2.9 m/s
Sólskinsstundir	=	158.2 klst

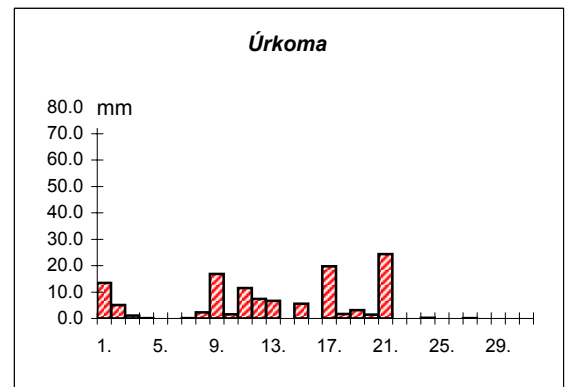
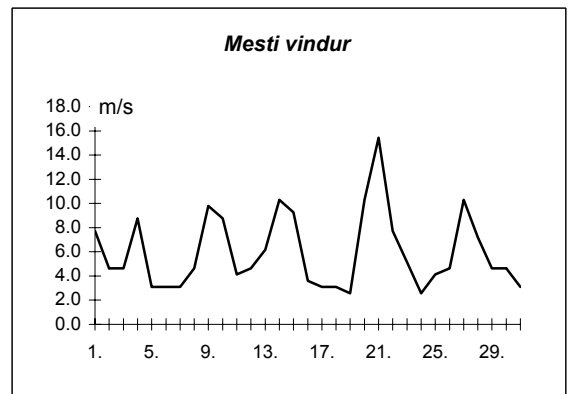
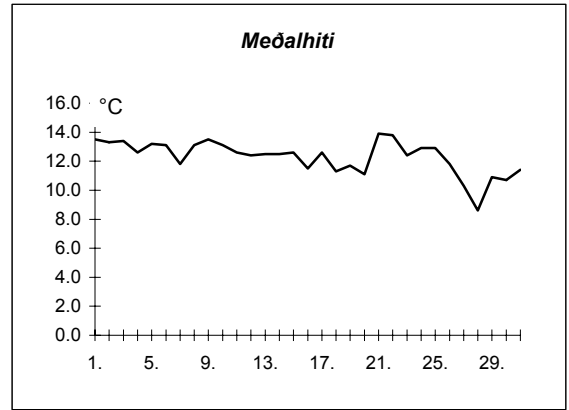
Dags	Meðalhiti (°C)	Hámark (°C)	Lágmark (°C)	Úrkoma (mm)	Úrkomutegund	Snjódýpt (cm)	Snjöhula (0-4)	Sólskin(klst)	Meðalvindur (m/s)	Mesti vindur (m/s)	Hviða (m/s)
1.	13.3	17.1	11.4	0.3	ri		0	0.2	3.9	7.2	10.8
2.	10.9	15.5	9.4	2.4	ri		0	1.0	4.2	6.7	9.3
3.	11.4	14.8	9.3	0.3	ri		0	0.4	4.1	8.2	11.3
4.	14.0	18.5	9.9	0.0			0	11.5	3.6	7.7	11.8
5.	13.7	17.5	10.4	---			0	2.7	3.6	7.7	9.8
6.	11.7	14.5	8.3	---			0	0.2	2.8	5.1	6.7
7.	13.7	16.4	11.7	---			0	1.8	2.3	4.6	5.7
8.	14.4	17.6	11.4	0.1	ri		0	0.0	3.8	7.7	11.3
9.	16.6	22.8	11.6	0.8	ri		0	10.3	5.1	9.3	15.4
10.	14.6	19.9	12.2	4.4	ri		0	1.6	5.3	8.8	12.4
11.	14.1	19.2	11.1	0.7	ri		0	4.6	3.6	6.2	11.8
12.	13.2	17.3	10.6	0.8	ri		0	6.7	3.9	8.2	12.9
13.	12.5	17.0	10.7	0.0			0	6.7	3.6	7.2	9.3
14.	14.9	19.8	10.1	---			0	7.1	4.8	8.2	14.4
15.	15.2	19.0	12.7	0.1	ri		0	10.2	5.5	8.2	14.4
16.	13.2	19.9	11.3	---			0	1.1	3.1	5.7	9.3
17.	11.3	15.7	6.9	0.0			0	11.0	3.5	6.7	9.8
18.	14.9	21.3	9.8	---			0	7.4	3.6	6.7	11.3
19.	12.7	16.3	10.4	---			0	0.2	2.7	5.7	8.2
20.	11.2	13.5	9.9	11.0	ri		0	2.1	4.1	6.2	8.2
21.	11.1	13.1	9.5	14.6	ri		0	0.0	6.4	8.2	13.4
22.	11.2	13.6	10.1	0.1	ri		0	2.3	4.6	8.8	13.4
23.	12.2	19.6	5.1	---			0	8.8	3.2	6.2	9.3
24.	13.0	17.0	11.4	1.2	ri		0	1.1	2.8	5.1	7.7
25.	14.0	18.3	12.3	0.5	ri		0	8.5	3.6	8.2	10.8
26.	13.0	17.0	9.1	---			0	0.7	4.6	9.3	14.4
27.	9.6	13.3	9.3	---			0	1.0	3.4	7.2	9.8
28.	9.3	14.5	2.7	---			0	7.4	3.7	6.7	9.3
29.	10.7	12.6	10.1	0.1	ri		0	8.8	3.9	6.7	9.8
30.	10.1	12.8	7.7	0.0			0	0.6	2.2	5.1	6.7
31.	13.6	16.3	9.9	0.1	ri		0	0.4	2.7	7.7	12.4



Meðalhiti	=	12.8 °C
Frávik frá meðaltali 1931-60	=	2.5 °C
Meðalhámarkshiti	=	16.8 °C
Meðallágmarkshiti	=	9.9 °C
Úrkomumagn	=	37.5 mm
Hlutfall úrkomu af meðaltali 1931-60	=	96.0 %
Meðalvindhraði	=	3.8 m/s
Sólskinsstundir	=	126.4 klst



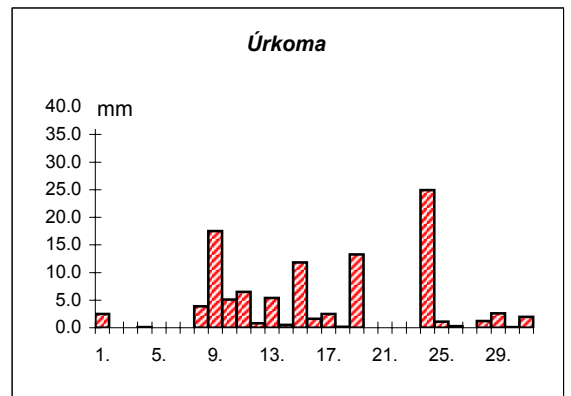
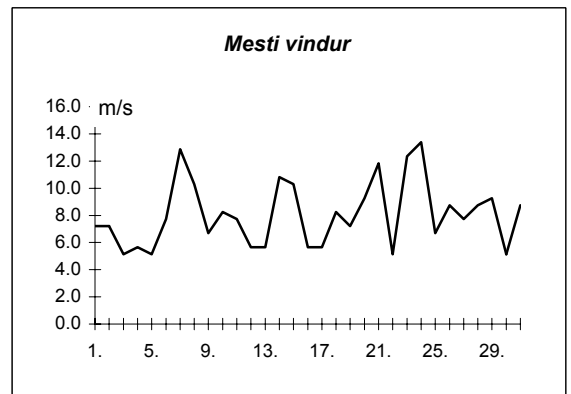
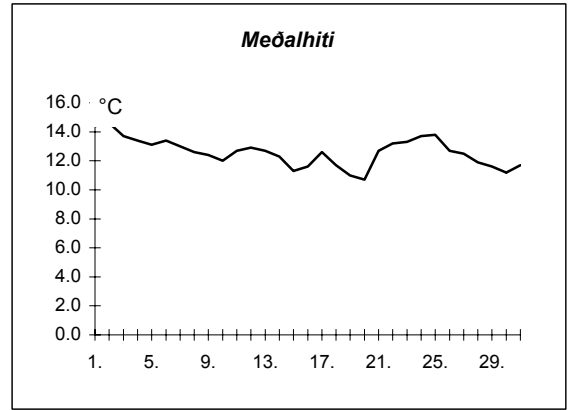
Dags	Meðalhiti (°C)	Hámark (°C)	Lágmark (°C)	Úrkoma (mm)	Úrkomutegund	Snjódypt (cm)	Snjóhula (0-4)	Sólskin(klíst)	Meðalvindur (m/s)	Mesti vindur (m/s)	Hviða (m/s)
1.	13.5	17.0	11.6	13.5	ri		0		3.3	7.7	
2.	13.3	18.3	10.8	5.1	ri		0		1.7	4.6	
3.	13.4	17.7	7.3	1.1	ri		0		2.0	4.6	
4.	12.6	17.0	11.0	0.1	ri		0		3.3	8.8	
5.	13.2	15.9	10.4	---			0		2.1	3.1	
6.	13.1	17.4	8.9	---			0		1.7	3.1	
7.	11.8	17.1	8.5	0.1	ri		0		2.1	3.1	
8.	13.1	15.3	11.2	2.3	ri		0		2.8	4.6	
9.	13.5	15.1	12.7	16.9	ri		0		4.7	9.8	
10.	13.1	15.7	12.0	1.6	ri		0		5.1	8.8	
11.	12.6	14.7	11.1	11.5	ri		0		2.4	4.1	
12.	12.4	15.2	10.2	7.4	ri		0		2.6	4.6	
13.	12.5	15.6	10.3	6.7	ri		0		3.1	6.2	
14.	12.5	15.6	7.4	---			0		4.8	10.3	
15.	12.6	15.7	11.7	5.6	ri		0		5.6	9.3	
16.	11.5	14.1	8.2	---			0		1.5	3.6	
17.	12.6	14.6	10.5	19.7	ri		0		1.8	3.1	
18.	11.3	15.0	7.8	1.7	ri		0		2.0	3.1	
19.	11.7	14.5	10.0	3.1	ri		0		1.6	2.6	
20.	11.1	14.4	8.8	1.5	ri		0		2.7	10.3	
21.	13.9	17.4	9.8	24.4	ri		0		10.8	15.4	
22.	13.8	17.6	12.3	0.0			0		4.4	7.7	
23.	12.4	15.5	10.0	---			0		2.6	5.1	
24.	12.9	16.7	9.8	0.2	ri		0		1.5	2.6	
25.	12.9	17.1	8.5	0.0			0		1.4	4.1	
26.	11.8	16.4	7.8	---			0		1.5	4.6	
27.	10.3	13.6	9.5	0.1	ri		0		6.4	10.3	
28.	8.6	13.0	2.8	---			0		1.8	7.2	
29.	10.9	14.7	6.3	---			0		2.6	4.6	
30.	10.7	14.0	9.5	0.0			0		1.3	4.6	
31.	11.4	15.4	8.7	0.0			0		1.9	3.1	



Meðalhiti	=	12.3 °C
Meðalhámarkshiti	=	15.7 °C
Meðallágmarkshiti	=	9.5 °C
Úrkomumagn	=	122.6 mm
Meðalvindhraði	=	3.0 m/s

Útgefandi : Veðurstofa Íslands
 Heimilisfang : Bústaðavegur 9
 150 Reykjavík

Dags	Meðalhiti (°C)	Hámark (°C)	Lágmark (°C)	Úrkoma (mm)	Úrkomutegund	Snjódýpt (cm)	Snjöhula (0-4)	Sólskin(klist)	Meðalvindur (m/s)	Mesti vindur (m/s)	Hviða (m/s)
1.	14.4	18.6	10.3	2.5	ri		0		4.2	7.2	11.3
2.	14.6	17.9	12.0	---			0		3.6	7.2	9.3
3.	13.7	20.1	10.3	---			0		3.0	5.1	8.2
4.	13.4	15.7	11.4	0.1	ri		0		3.6	5.7	7.7
5.	13.1	16.0	11.0	0.0			0		2.7	5.1	5.7
6.	13.4	16.2	11.4	---			0		4.8	7.7	9.8
7.	13.0	16.0	9.8	---			0		3.1	12.9	18.0
8.	12.6	14.5	12.2	3.9	ri		0		6.6	10.3	13.9
9.	12.4	15.0	11.8	17.5	ri		0		3.6	6.7	9.3
10.	12.0	14.6	9.3	5.1	ri		0		5.3	8.2	11.3
11.	12.7	14.8	10.5	6.5	ri		0		4.7	7.7	11.3
12.	12.9	15.5	11.0	0.8	ri		0		2.6	5.7	7.2
13.	12.7	17.3	10.6	5.4	ri		0		4.1	5.7	7.2
14.	12.3	15.7	11.9	0.5	ri		0		7.7	10.8	14.4
15.	11.3	14.7	9.4	11.8	ri		0		5.9	10.3	12.9
16.	11.6	14.0	10.1	1.6	ri		0		2.4	5.7	8.2
17.	12.6	16.0	9.3	2.5	ri		0		2.3	5.7	8.8
18.	11.7	14.9	10.8	0.2	ri		0		4.9	8.2	11.8
19.	11.0	13.7	8.9	13.3	ri		0		4.0	7.2	10.3
20.	10.7	14.0	7.5	0.0			0		3.6	9.3	11.8
21.	12.7	14.7	10.9	0.0			0		7.7	11.8	15.4
22.	13.2	17.7	10.2	---			0		2.6	5.1	8.2
23.	13.3	17.2	11.1	0.0			0		8.0	12.4	16.5
24.	13.7	15.4	12.2	24.9	ri		0		8.5	13.4	18.5
25.	13.8	16.1	11.9	1.1	ri		0		3.7	6.7	9.3
26.	12.7	16.1	12.4	0.3	ri		0		6.4	8.8	10.8
27.	12.5	15.7	10.0	0.0			0		3.6	7.7	9.8
28.	11.9	14.8	11.0	1.2	ri		0		5.4	8.8	11.8
29.	11.6	13.9	10.5	2.6	ri		0		5.4	9.3	12.4
30.	11.2	13.4	9.9	0.1	ri		0		3.8	5.1	7.2
31.	11.7	13.5	11.1	2.0	ri		0		4.0	8.8	10.8



Meðalhiti	=	12.6 °C
Frávik frá meðaltali 1931-60	=	2.2 °C
Meðalhámarkshiti	=	15.6 °C
Meðallágmarkshiti	=	10.7 °C
Úrkomumagn	=	103.9 mm
Hlutfall úrkomu af meðaltali 1931-60	=	124.0 %
Meðalvindhraði	=	4.6 m/s