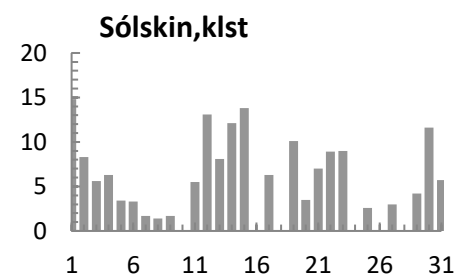
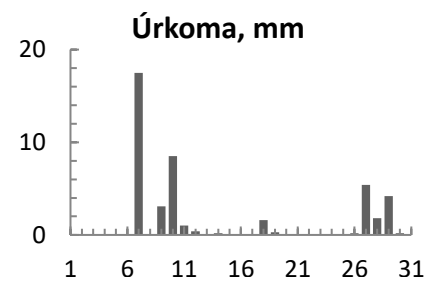
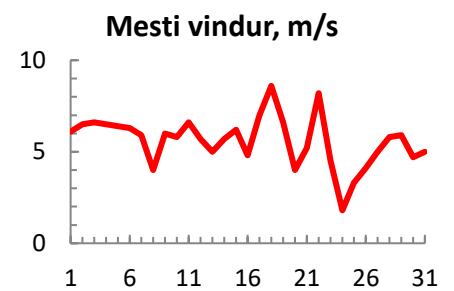
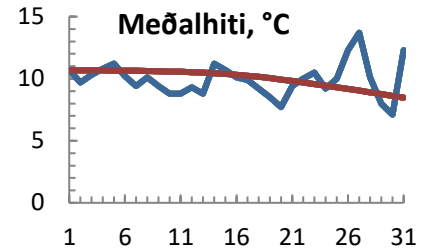


dagur	meðalhiti (°C)	Hámark (°C)	Lágmark (°C)	Úrkoma (mm)	Úrkomutegund	Snjódýpt (cm)	Snjöhula (0-4)	Sólskin (klst)	Meðalvindur (m/s)	Mesti vindur (m/s)	Hviða (m/s)
1	10.7	15.2	5.0			0	0	14.8	3.2	6.1	8.8
2	9.7	15.4	6.2			0	0	8.3	2.7	6.5	9.5
3	10.3	13.2	8.6			0	0	5.6	2.2	6.6	10
4	10.8	14.0	7.3			0	0	6.3	2.5	6.5	9.6
5	11.2	13.8	9.6			0	0	3.4	3	6.4	9.6
6	10.2	13.2	9.2			0	0	3.3	3	6.3	9.2
7	9.4	10.9	8.0	17.5	ri	0	0	1.7	3	5.9	8.7
8	10.1	12.5	8.2	0.0		0	0	1.4	1.5	4	6.6
9	9.4	11.6	8.3	3.1	ri	0	0	1.7	3.8	6	10.3
10	8.8	10.1	7.4	8.5	ri	0	0	0	3.3	5.8	8.7
11	8.8	11.4	7.6	1.0	ri	0	0	5.5	2.6	6.6	10.3
12	9.3	14.8	3.7	0.4	ri	0	0	13.1	2.1	5.7	9.5
13	8.8	13.0	2.7			0	0	8.1	2.2	5	7.1
14	11.2	15.0	7.5	0.2	ri	0	0	12.1	2.4	5.7	8.6
15	10.7	15.3	5.6			0	0	13.8	1.9	6.2	7.8
16	10.1	13.0	8.2	0.0		0	0	0	2.3	4.8	7.3
17	9.9	11.5	9.0	0.0		0	0	6.3	3	7	11.3
18	9.2	10.3	8.6	1.6	ri	0	0	0	5.3	8.6	13.1
19	8.5	11.1	7.2	0.3	ri	0	0	10.1	4.6	6.6	10.3
20	7.7	12.2	4.8			0	0	3.5	1.4	4	6.2
21	9.4	16.6	2.6			0	0	7	1.4	5.2	7.5
22	10.0	14.3	5.7			0	0	8.9	2.8	8.2	10.1
23	10.5	12.8	9.0			0	0	9	1.5	4.5	6.8
24	9.2	12.5	8.0			0	0	0	0.9	1.8	3.2
25	10.0	12.8	7.2	0.0		0	0	2.6	1.2	3.3	5
26	12.3	14.5	9.0	0.2	ri	0	0	0	1.9	4.1	7.2
27	13.7	17.5	9.0	5.4	ri	0	0	3	2.9	5	9.8
28	10.1	16.6	9.6	1.8	ri	0	0	0	2.9	5.8	8.3
29	8.0	10.4	8.1	4.2	ri	0	0	4.2	3.2	5.9	9
30	7.1	12.3	0.8	0.2	ri	0	0	11.6	1.5	4.7	6.7
31	12.3	17.6	5.3			0	0	5.7	2.7	5	9.1

Meðalhiti (°C)	9.9
Frávik frá meðaltali 1961 - 1990 (°C)	-0.1
Meðalhámarkshiti (°C)	13.4
Meðallágmarkshiti (°C)	7.0
Úrkomumagn (mm)	44.4
Hlutfall úrkomu af meðaltali 1961-1990 (%)	130.2
Meðalvindhraði (m/s)	2.5
Sólskinsstundir (klst)	171.0



---

