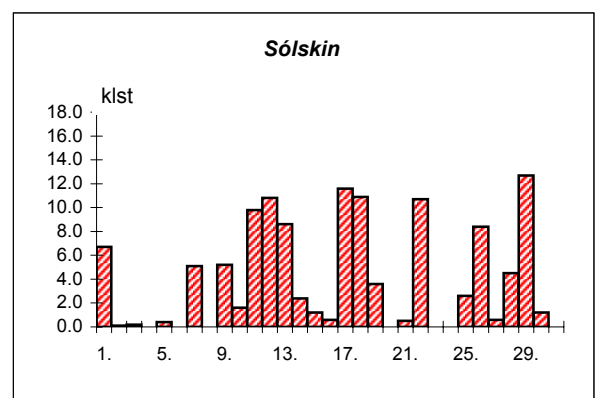
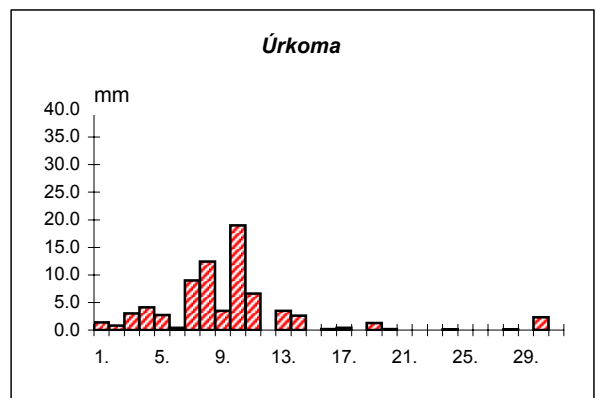
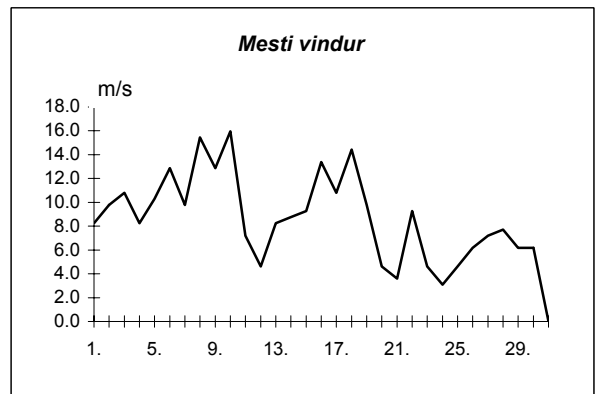
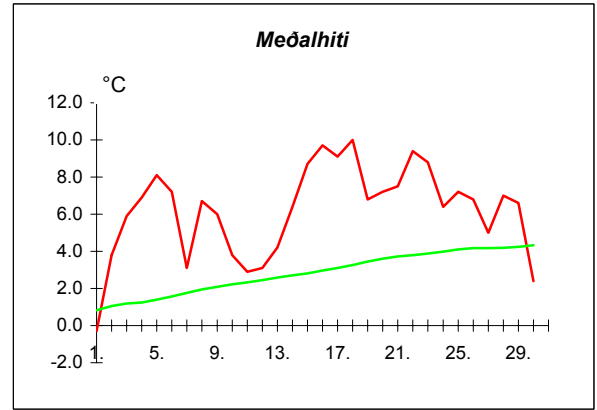
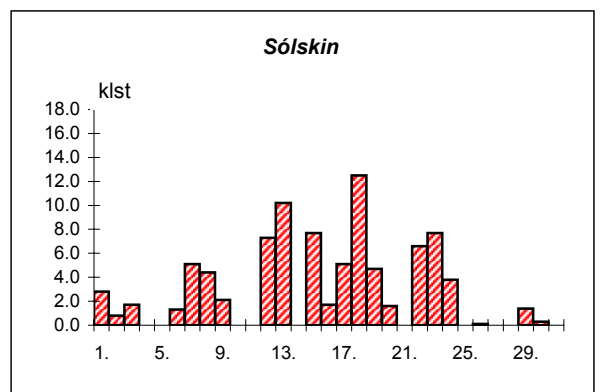
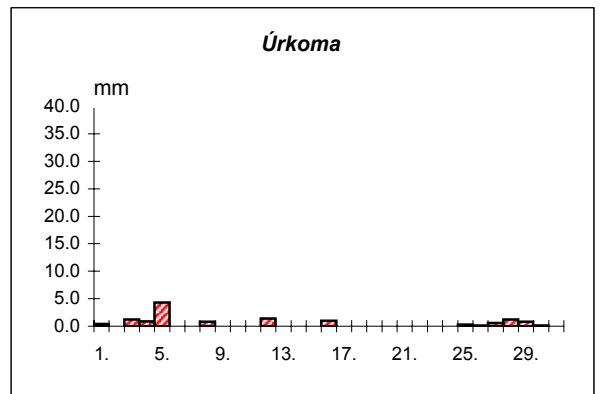
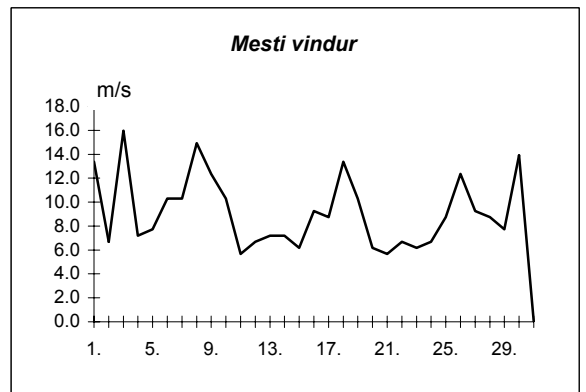
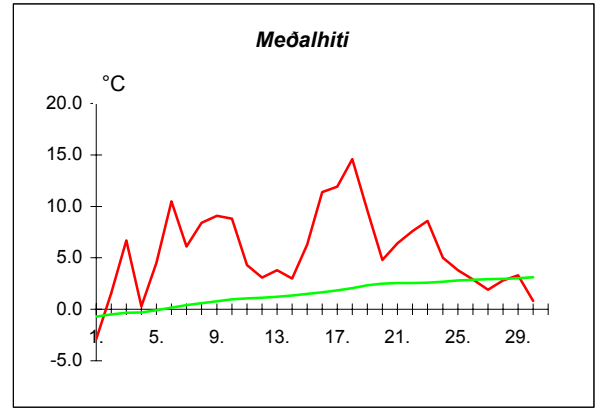


Dags	Meðalhiti (°C)	Hámark (°C)	Lágmark (°C)	Úrkoma (mm)	Úrkomutegund	Snjódýpt (cm)	Snjöhula (0-4)	Sólskin(klst)	Meðalvindur (m/s)	Mesti vindur (m/s)	Hviða (m/s)
1.	-0.3	5.1	-3.2	1.4	sl		0	6.7	3.7	8.2	11.8
2.	3.8	7.7	-0.5	0.8	sn	1	2	0.1	3.9	9.8	12.9
3.	5.9	7.0	5.2	3.0	sl		0	0.2	6.1	10.8	17.0
4.	6.9	8.8	3.3	4.1	ri		0	0.0	4.8	8.2	11.8
5.	8.1	10.1	6.3	2.7	ri		0	0.4	8.2	10.3	15.4
6.	7.2	9.4	8.3	0.4	ri		0	0.0	9.4	12.9	19.0
7.	3.1	8.3	0.6	9.0	sl		0	5.1	5.7	9.8	17.0
8.	6.7	8.5	1.7	12.4	sl		0	0.0	10.8	15.4	24.7
9.	6.0	8.8	3.4	3.5	ri		0	5.2	7.2	12.9	19.6
10.	3.8	7.6	1.7	19.0	sl		0	1.6	4.7	16.0	23.2
11.	2.9	5.9	0.2	6.6	ri		0	9.8	2.2	7.2	7.2
12.	3.1	6.0	0.6	---			0	10.8	2.3	4.6	7.2
13.	4.2	7.2	0.8	3.5	sl		0	8.6	4.9	8.2	11.8
14.	6.4	9.3	2.5	2.6	sl		0	2.4	4.1	8.8	12.9
15.	8.7	12.5	5.9	0.0			0	1.2	5.7	9.3	14.9
16.	9.7	12.4	8.1	0.2	ri		0	0.6	5.8	13.4	19.0
17.	9.1	11.8	8.1	0.4	ri		0	11.6	7.5	10.8	16.5
18.	10.0	12.1	7.3	---			0	10.9	9.5	14.4	20.6
19.	6.8	10.9	3.5	1.3	ri		0	3.6	3.1	9.8	14.4
20.	7.2	8.6	5.4	0.2	ri		0	0.0	1.5	4.6	6.7
21.	7.5	9.0	6.1	0.0			0	0.5	1.7	3.6	6.7
22.	9.4	13.6	4.5	---			0	10.7	2.6	9.3	9.3
23.	8.8	13.3	8.3	0.0			0	0.0	2.5	4.6	7.2
24.	6.4	8.2	5.7	0.1	ri		0	0.0	1.3	3.1	4.6
25.	7.2	9.6	5.6	0.0			0	2.6	1.8	4.6	7.2
26.	6.8	9.9	2.7	0.0			0	8.4	2.5	6.2	9.8
27.	5.0	10.0	2.9	---			0	0.6	3.8	7.2	11.8
28.	7.0	8.7	4.7	0.1	ri		0	4.5	3.0	7.7	7.7
29.	6.6	9.6	3.8	---			0	12.7	3.5	6.2	9.8
30.	2.4	9.6	0.5	2.3	sl		0	1.2	3.3	6.2	9.3
31.									0.0	0.0	0.0



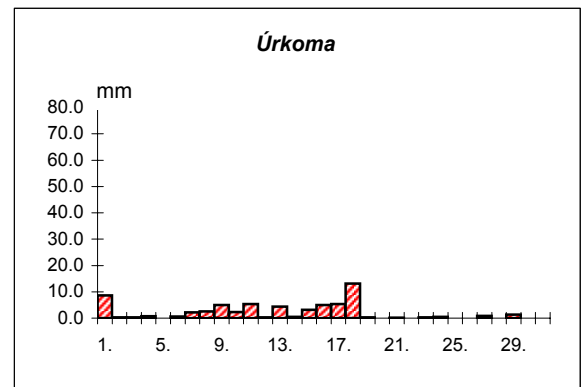
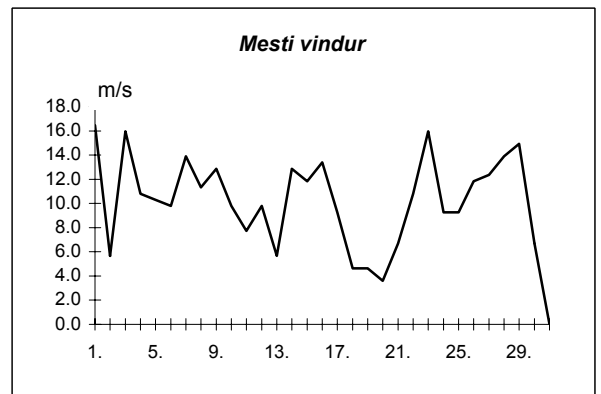
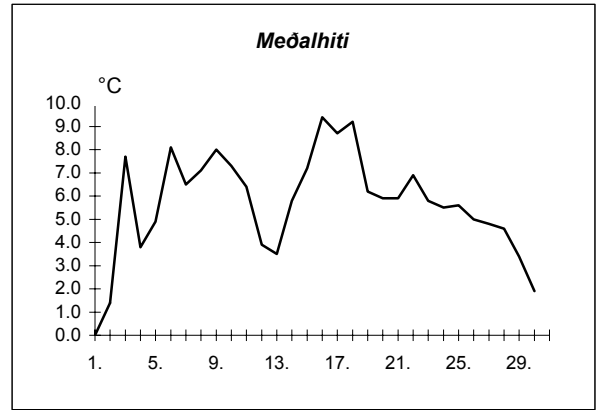
Meðalhiti	=	6.2 °C
Frávik frá meðaltali 1931-60	=	3.1 °C
Meðalhámarkshiti	=	9.3 °C
Meðallágmarkshiti	=	3.8 °C
Úrkomumagn	=	73.6 mm
Hlutfall úrkomu af meðaltali 1931-60	=	139.0 %
Meðalvindhraði	=	4.5 m/s
Sólskinsstundir	=	120.0 klst

Dags	Meðalhiti (°C)	Hámark (°C)	Lágmark (°C)	Úrkoma (mm)	Úrkomutegund	Snjódýpt (cm)	Snjóhula (0-4)	Sólskin(klst)	Meðalvindur (m/s)	Mesti vindur (m/s)	Hviða (m/s)
1.	-2.9	4.1	-4.0	0.4	sl	2	2	2.8	7.7	13.4	20.6
2.	1.6	7.1	-4.6	0.0		2	2	0.8	3.3	6.7	10.3
3.	6.7	11.0	3.1	1.2	ri		0	1.7	7.9	16.0	25.2
4.	0.3	7.0	-0.2	0.9	sl		0	0.0	3.8	7.2	11.3
5.	4.5	10.2	-1.5	4.3	sl		0	0.0	3.5	7.7	12.9
6.	10.5	12.6	8.0	---			0	1.3	8.2	10.3	19.0
7.	6.1	12.2	3.1	---			0	5.1	6.3	10.3	17.0
8.	8.4	12.1	3.5	0.8	ri		0	4.4	9.3	14.9	23.2
9.	9.1	12.0	8.1	---			0	2.1	6.7	12.4	23.2
10.	8.8	14.0	6.8	---			0	0.0	4.6	10.3	19.0
11.	4.3	9.3	3.9	0.0			0	0.0	3.6	5.7	9.3
12.	3.1	5.8	0.9	1.4	ri		0	7.3	3.2	6.7	9.3
13.	3.8	9.5	-0.7	---			0	10.2	4.0	7.2	10.3
14.	3.0	8.8	-1.5	---			0	0.0	3.7	7.2	11.3
15.	6.3	9.8	2.8	0.0			0	7.7	3.6	6.2	10.8
16.	11.4	14.6	5.1	1.0	ri		0	1.7	5.0	9.3	15.4
17.	11.9	16.0	8.6	---			0	5.1	6.0	8.8	13.4
18.	14.6	18.4	10.2	---			0	12.5	8.0	13.4	20.1
19.	9.6	15.6	6.0	---			0	4.7	6.4	10.3	18.5
20.	4.8	7.4	2.8	0.0			0	1.6	3.5	6.2	8.2
21.	6.4	8.3	4.6	---			0	0.0	2.7	5.7	9.3
22.	7.6	11.5	5.0	---			0	6.6	3.1	6.7	9.3
23.	8.6	15.9	4.7	0.0			0	7.7	3.5	6.2	9.3
24.	5.0	12.2	2.4	---			0	3.8	4.0	6.7	9.3
25.	3.8	6.4	3.6	0.3	ri		0	0.0	6.0	8.8	14.4
26.	2.9	5.5	1.7	0.1	ri		0	0.1	6.2	12.4	22.7
27.	1.9	4.5	-0.5	0.6	sl		0	0.0	5.4	9.3	17.5
28.	2.8	5.6	0.4	1.2	sl		0	0.0	5.0	8.8	17.5
29.	3.3	5.6	2.0	0.8	sl		0	1.4	4.1	7.7	13.9
30.	0.8	4.9	0.1	0.1	sl		0	0.3	5.5	13.9	13.9
31.									0.0	0.0	0.0



Meðalhiti	=	5.6 °C
Frávik frá meðaltali 1931-60	=	3.9 °C
Meðalhámarkshiti	=	9.9 °C
Meðallágmarkshiti	=	2.8 °C
Úrkomumagn	=	13.1 mm
Hlutfall úrkomu af meðaltali 1931-60	=	41.0 %
Meðalvindhraði	=	5.1 m/s
Sólskinsstundir	=	88.9 klst

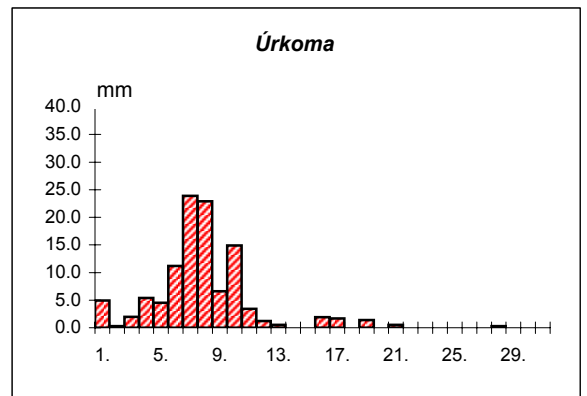
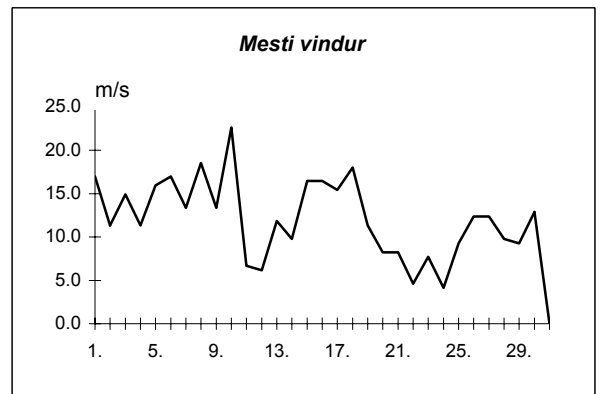
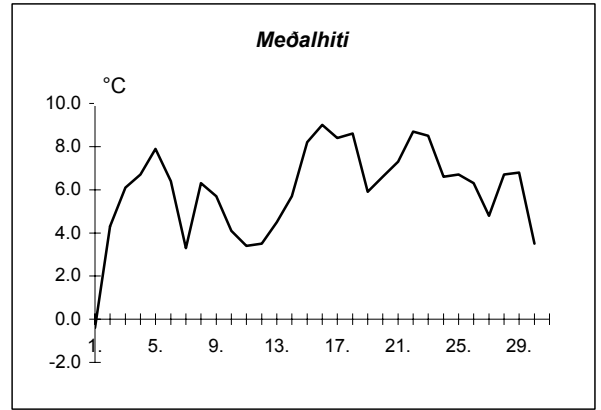
Dags	Meðalhiti (°C)	Hámark (°C)	Lágmark (°C)	Úrkoma (mm)	Úrkomutegund	Snjódypt (cm)	Snjóhula (0-4)	Sólskin(klist)	Meðalvindur (m/s)	Mesti vindur (m/s)	Hviða (m/s)
1.	0.0	3.8	-0.9	8.6	ri		0		10.1	16.5	
2.	1.4	4.6	-2.8	0.2	sn	0	4		3.1	5.7	
3.	7.7	11.3	1.3	0.3	sl		0		7.6	16.0	
4.	3.8	12.0	2.2	0.7	ri		0		5.6	10.8	
5.	4.9	7.2	2.1	0.0			0		3.3	10.3	
6.	8.1	10.5	5.1	0.6	ri		0		5.6	9.8	
7.	6.5	8.5	5.3	2.2	ri		0		9.1	13.9	
8.	7.1	9.2	3.2	2.6	ri		0		6.4	11.3	
9.	8.0	10.0	6.8	5.0	ri		0		8.2	12.9	
10.	7.3	9.2	5.7	2.3	ri		0		6.7	9.8	
11.	6.4	8.3	5.8	5.3	ri		0		3.4	7.7	
12.	3.9	7.3	2.8	0.3	ri		0		3.3	9.8	
13.	3.5	7.2	-1.4	4.4	ri		0		3.0	5.7	
14.	5.8	8.7	3.0	0.5	ri		0		7.2	12.9	
15.	7.2	11.5	1.4	3.2	ri		0		5.4	11.8	
16.	9.4	10.7	8.1	5.0	ri		0		8.2	13.4	
17.	8.7	10.3	8.4	5.3	ri		0		4.2	9.3	
18.	9.2	12.6	8.2	13.1	ri		0		2.6	4.6	
19.	6.2	12.9	2.9	0.3	ri		0		2.1	4.6	
20.	5.9	8.1	4.1	---			0		2.4	3.6	
21.	5.9	9.4	3.9	0.1	ri		0		3.1	6.7	
22.	6.9	9.9	1.0	---			0		6.6	10.8	
23.	5.8	9.4	5.8	0.3	ri		0		8.1	16.0	
24.	5.5	9.3	3.0	0.5	ri		0		4.6	9.3	
25.	5.6	9.2	2.2	0.0			0		4.9	9.3	
26.	5.0	7.4	4.1	---			0		8.0	11.8	
27.	4.8	6.7	3.2	0.9	ri		0		8.2	12.4	
28.	4.6	7.0	3.7	0.0			0		9.4	13.9	
29.	3.4	6.5	2.4	1.3	ri		0		8.2	14.9	
30.	1.9	5.0	-1.1	0.0			0		3.5	6.7	
31.									0.0	0.0	



Meðalhiti	=	5.7 °C
Meðalhámarkshiti	=	8.8 °C
Meðallágmarkshiti	=	3.3 °C
Úrkomumagn	=	63.0 mm
Meðalvindhraði	=	5.7 m/s

Útgefandi : Veðurstofa Íslands
 Heimilisfang : Bústaðavegur 9
 150 Reykjavík

Dags	Meðalhiti (°C)	Hámark (°C)	Lágmark (°C)	Úrkoma (mm)	Úrkomutegund	Snjódýpt (cm)	Snjóhula (0-4)	Sólskin(klist)	Meðalvindur (m/s)	Mesti vindur (m/s)	Hviða (m/s)
1.	-0.4	4.8	-3.5	4.9	sl	4	4		6.2	17.0	21.1
2.	4.3	7.6	-0.2	0.3	sl	3	2		6.6	11.3	16.5
3.	6.1	8.3	5.8	2.0	sl		0		8.8	14.9	18.0
4.	6.7	8.3	3.5	5.4	ri		0		7.2	11.3	15.4
5.	7.9	8.7	6.2	4.5	ri		0		12.5	16.0	21.1
6.	6.4	8.5	3.9	11.2	ri		0		10.3	17.0	21.1
7.	3.3	5.1	0.6	23.9	sl		0		8.9	13.4	18.5
8.	6.3	8.1	1.0	22.9	sl		0		13.2	18.5	26.3
9.	5.7	8.6	3.6	6.6	sl		0		8.8	13.4	20.1
10.	4.1	8.4	2.8	14.9	ri		0		6.3	22.7	30.4
11.	3.4	6.5	0.2	3.4	sl		0		3.8	6.7	8.8
12.	3.5	6.3	0.8	1.2	sl	0	2		3.6	6.2	8.2
13.	4.5	7.9	1.1	0.5	sl		0		7.1	11.8	17.0
14.	5.7	8.6	2.3	0.0			0		5.5	9.8	11.8
15.	8.2	11.9	5.5	0.0			0		9.0	16.5	21.6
16.	9.0	13.1	8.0	1.9	ri		0		10.2	16.5	23.7
17.	8.4	10.9	7.4	1.7	ri		0		9.7	15.4	20.6
18.	8.6	10.4	6.6	---			0		13.3	18.0	23.7
19.	5.9	10.1	3.5	1.4	ri		0		6.9	11.3	16.0
20.	6.6	8.0	5.0	0.0			0		4.6	8.2	11.3
21.	7.3	9.0	5.3	0.5	ri		0		3.2	8.2	11.8
22.	8.7	12.4	4.7	---			0		2.6	4.6	6.7
23.	8.5	12.7	8.1	0.0			0		4.1	7.7	9.3
24.	6.6	8.9	6.1	0.0			0		2.5	4.1	6.7
25.	6.7	9.3	5.5	0.0			0		5.6	9.3	11.8
26.	6.3	9.6	3.7	0.0			0		7.2	12.4	15.4
27.	4.8	10.0	2.8	---			0		6.6	12.4	17.5
28.	6.7	8.9	4.6	0.3	sl		0		4.7	9.8	11.8
29.	6.8	10.1	3.8	---			0		4.3	9.3	12.9
30.	3.5	9.7	2.7	---			0		6.1	12.9	16.5
31.									0.0	0.0	0.0



Meðalhiti	=	6.0 °C
Frávik frá meðaltali 1931-60	=	3.0 °C
Meðalhámarkshiti	=	9.0 °C
Meðallágmarkshiti	=	3.7 °C
Úrkomumagn	=	107.5 mm
Hlutfall úrkomu af meðaltali 1931-60	=	160.0 %
Meðalvindhraði	=	6.9 m/s

