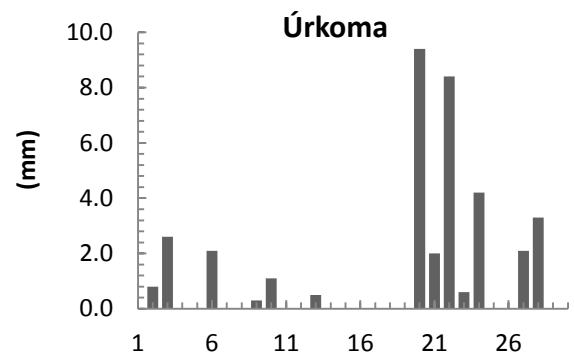
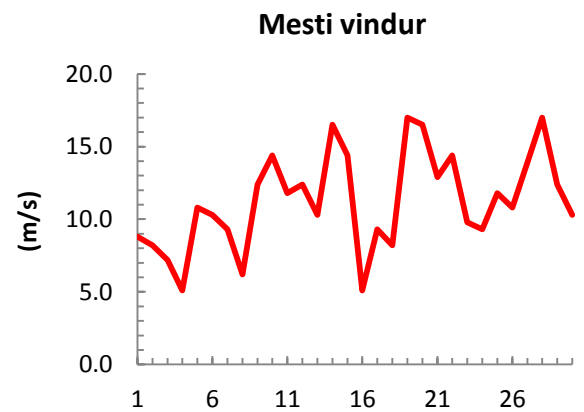
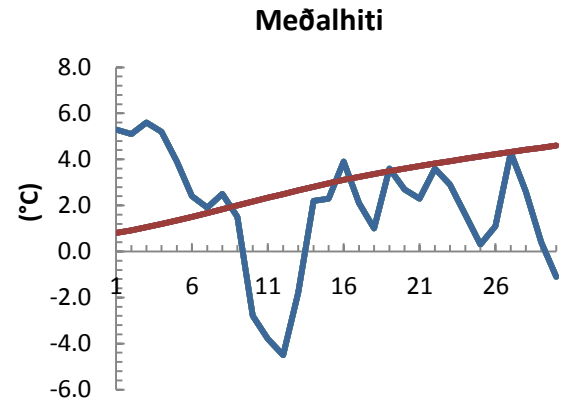


dagur	meðalhiti (°C)	Hámark (°C)	Lágmark (°C)	Úrkoma (mm)	Úrkomutegund	Snjódýpt (cm)	Snjóhúla (0-4)	Sólskin (klst)	Meðalvindur (m/s)	Mesti vindur (m/s)	Hviða (m/s)
1	5.3	8.5	3.0			0	0		6.1	8.8	11.8
2	5.1	7.6	3.1	0.8	ri	0	0		4.3	8.2	10.8
3	5.6	10.0	1.8	2.6	ri	0	0		3.7	7.2	8.8
4	5.2	9.0	2.5			0	0		3.5	5.1	6.7
5	3.9	7.9	2.7			0	0		5.3	10.8	13.9
6	2.4	5.5	1.9	2.1	sl	0	0		6.8	10.3	13.9
7	1.9	4.5	-0.1			0	0		5.6	9.3	12.4
8	2.5	5.4	0.9			0	0		2.5	6.2	7.2
9	1.5	5.3	-1.1	0.3	sl	0	0		4.6	12.4	14.4
10	-2.8	3.7	-5.0	1.1	sl	0	0		11.2	14.4	18.5
11	-3.8	-0.3	-5.4	0.0		0	0		8.7	11.8	15.4
12	-4.5	-1.4	-6.1			0	0		9.6	12.4	16.5
13	-1.8	0.5	-4.5	0.5	sn	0	0		8.2	10.3	12.9
14	2.2	5.1	-1.6	0.0		0	0		12.8	16.5	20.6
15	2.3	5.5	-0.3			0	0		9.1	14.4	18.5
16	3.9	7.9	-1.0			0	0		2.5	5.1	6.7
17	2.1	7.6	0.8			0	0		6.0	9.3	11.8
18	1.0	3.7	-1.2	0.0		0	0		5.0	8.2	10.8
19	3.6	7.4	-1.0			0	0		9.2	17.0	22.7
20	2.7	7.6	0.5	9.4	ri	0	0		7.8	16.5	21.1
21	2.3	6.2	-1.3	2.0	sn	1	4		5.0	12.9	17.5
22	3.6	7.0	0.6	8.4	sl	0	0		9.0	14.4	20.1
23	2.9	6.2	1.5	0.6	ri	0	0		4.9	9.8	12.4
24	1.6	5.1	-0.9	4.2	sl	2	4		3.8	9.3	11.8
25	0.3	4.5	-0.9	0.0		0	0		7.8	11.8	14.4
26	1.1	4.2	-2.4			0	0		5.2	10.8	14.4
27	4.3	6.8	1.8	2.1	ri	0	0		9.9	13.9	19.6
28	2.6	5.9	0.6	3.3	sl	0	0		10.6	17.0	20.6
29	0.4	4.2	-1.1			0	0		6.9	12.4	16.5
30	-1.1	2.5	-3.5			0	0		5.5	10.3	13.4



Meðalhiti (°C)	1.9
Frávik frá meðaltali 1961 - 1990 (°C)	-1.1
Meðalhámarkshiti (°C)	5.5
Meðallágmarkshiti (°C)	-0.5
Úrkomumagn (mm)	37.4
Hlutfall úrkomu af meðaltali 1961-1990 (%)	47.0
Meðalvindhraði (m/s)	6.7

