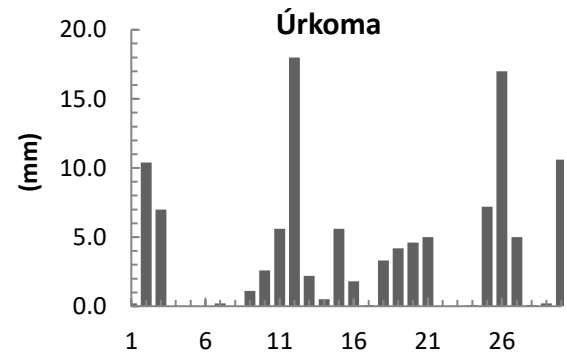
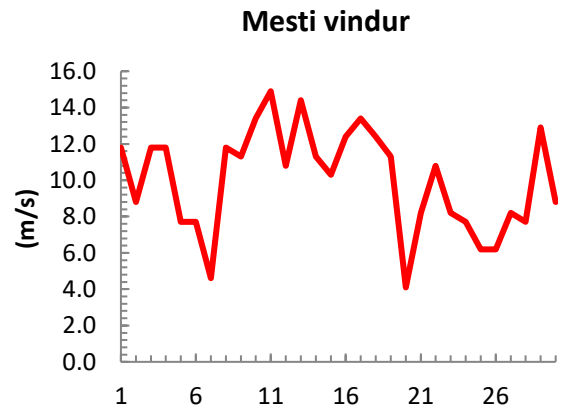
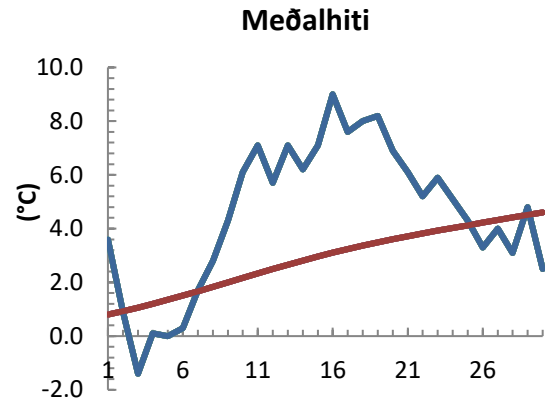


dagur	meðalhiti (°C)	Hámark (°C)	Lágmark (°C)	Úrkoma (mm)	Úrkomutegund	Snjódýpt (cm)	Snjöhula (0-4)	Sólskin (klst)	Meðalvindur (m/s)	Mesti vindur (m/s)	Hviða (m/s)
1	3.6	5.3	1.9	0.2	ri	0	0	0.0	7.2	11.8	15.4
2	0.9	4.7	0.4	10.4	sn	9	4	0.0	5.9	8.8	12.9
3	-1.4	1.0	-2.6	7.0	sl	6	4	0.0	7.3	11.8	14.4
4	0.1	3.4	-3.4	0.0		6	4	0.0	8.4	11.8	14.9
5	0.0	3.7	-4.2	0.0		0	2	0.0	3.2	7.7	9.8
6	0.3	3.7	-3.3	0.0		0	2	0.0	4.1	7.7	9.3
7	1.7	4.5	-0.8	0.2	sn	0	2	0.0	2.6	4.6	5.7
8	2.8	4.5	-0.3	0.0		0	2	0.0	7.6	11.8	15.4
9	4.3	6.3	1.9	1.1	ri	0	0	0.0	9.0	11.3	15.4
10	6.1	7.5	4.5	2.6	ri	0	0	0.0	11.0	13.4	18.5
11	7.1	8.0	6.8	5.6	ri	0	0	0.0	12.3	14.9	21.1
12	5.7	8.1	4.0	18.0	ri	0	0	0.0	4.3	10.8	14.4
13	7.1	8.9	5.4	2.2	ri	0	0	0.0	8.2	14.4	20.6
14	6.2	8.3	5.1	0.5	ri	0	0	0.0	5.7	11.3	15.4
15	7.1	9.1	5.7	5.6	ri	0	0	0.0	7.2	10.3	14.4
16	9.0	12.6	5.9	1.8	ri	0	0	0.0	8.3	12.4	16.5
17	7.6	12.0	6.7	0.1	ri	0	0	0.0	8.0	13.4	17.5
18	8.0	10.0	5.8	3.3	ri	0	0	0.0	8.2	12.4	16.5
19	8.2	9.8	5.7	4.2	ri	0	0	0.0	7.4	11.3	14.9
20	6.9	8.8	6.2	4.6	ri	0	0	0.0	2.0	4.1	5.1
21	6.1	9.4	4.5	5.0	ri	0	0	0.0	4.3	8.2	10.3
22	5.2	8.9	2.5	0.0		0	0	0.0	8.0	10.8	12.9
23	5.9	9.8	2.6	0.0		0	0	0.0	5.4	8.2	11.3
24	5.1	8.5	4.4	0.1	ri	0	0	0.0	5.9	7.7	9.8
25	4.3	5.6	3.2	7.2	sl	0	0	0.0	2.6	6.2	7.2
26	3.3	5.7	0.8	17.0	sl	0	2	0.0	2.6	6.2	8.8
27	4.0	6.2	1.9	5.0	sl	0	0	0.0	5.6	8.2	10.3
28	3.1	6.5	1.0	0.1	ri	0	0	0.0	5.0	7.7	9.8
29	4.8	6.7	1.5	0.2	ri	0	0	0.0	8.4	12.9	16.5
30	2.5	6.7	1.4	10.6	sl	0	0	0.0	5.0	8.8	11.3



Meðalhiti (°C)	4.5
Frávik frá meðaltali 1961 - 1990 (°C)	1.6
Meðalhámarkshiti (°C)	7.1
Meðallágmarkshiti (°C)	2.5
Úrkomumagn (mm)	112.6
Hlutfall úrkomu af meðaltali 1961-1990 (%)	141.6
Meðalvindhraði (m/s)	6.4