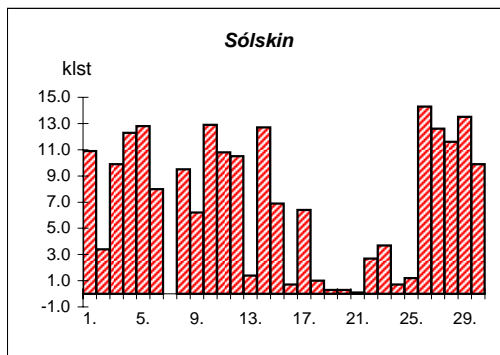
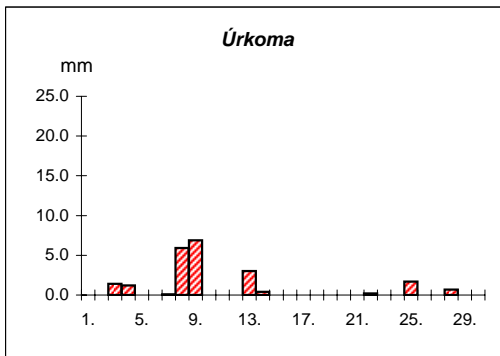
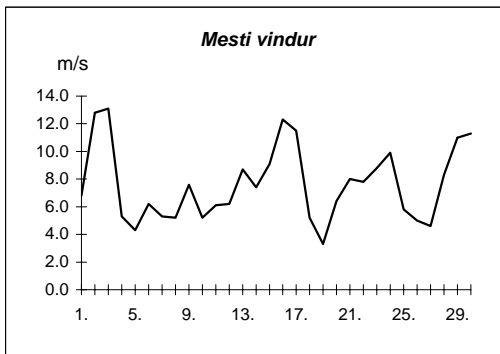
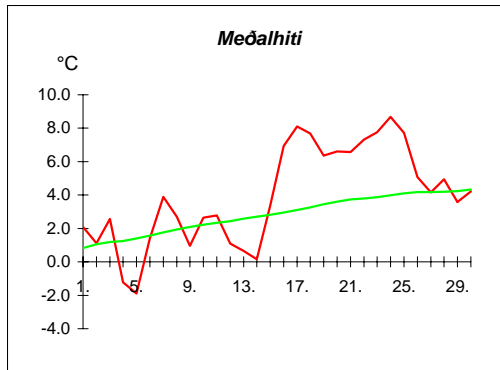
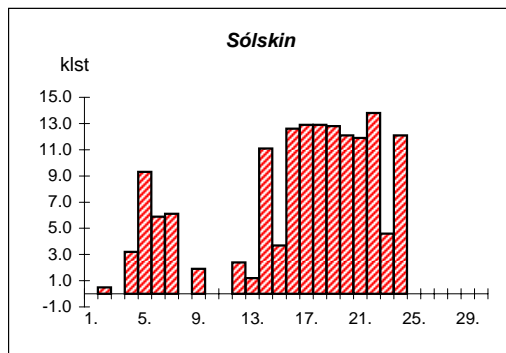
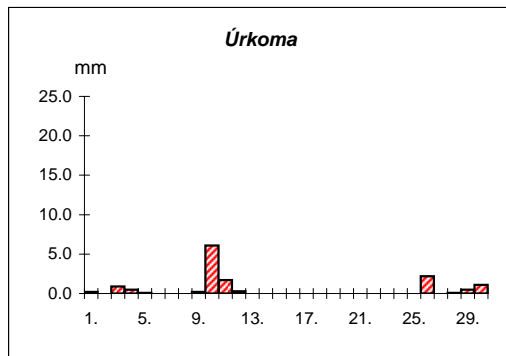
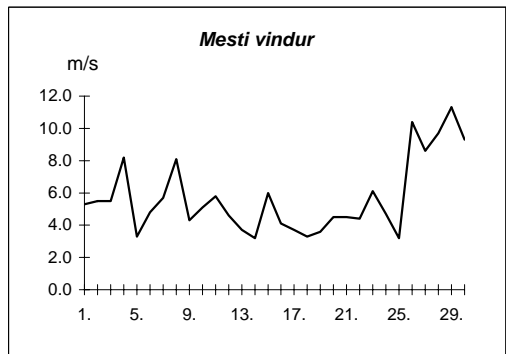
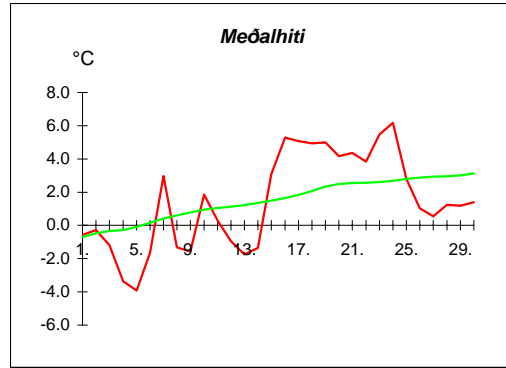


Dags	Meðalhiti (°C)	Hámark (°C)	Lágmark (°C)	Úrkoma (mm)	Úrkomutegund	Snjódýpt (cm)	Snjóhula (0-4)	Sólskin(klst)	Meðalvindur (m/s)	Mesti vindur (m/s)	Hviða (m/s)
1.	2.1	6.3	0.1				0	10.9	4.3	6.8	11.1
2.	1.1	4.5	-2.0				0	3.4	6.7	12.8	21.1
3.	2.6	6.1	0.6	1.4	sl	1	4	9.9	6.2	13.1	21.4
4.	-1.2	4.8	-3.6	1.2	sl		0	12.3	1.9	5.3	9.4
5.	-1.9	4.2	-6.7				0	12.8	1.2	4.3	6.1
6.	1.4	5.0	-4.4				0	8.0	2.6	6.2	9.1
7.	3.9	6.0	1.7	0.1	ri		0	0.0	2.2	5.3	8.4
8.	2.7	5.6	2.2	5.9	ri		0	9.5	2.8	5.2	8.8
9.	1.0	5.2	-1.6	6.9	sn	11	4	6.2	3.1	7.6	13.4
10.	2.7	6.5	-2.5	0.0	sn	7	4	12.9	2.5	5.2	8.3
11.	2.8	6.5	1.5				2	10.8	3.5	6.1	10.6
12.	1.1	4.7	-2.7				2	10.5	3.5	6.2	9.5
13.	0.7	4.0	-1.4	3.0	sn	6	4	1.4	3.6	8.7	12.8
14.	0.2	3.0	-3.0	0.4	sn		0	12.7	3.0	7.4	11.5
15.	3.4	8.0	-3.6				0	6.9	5.0	9.1	13.2
16.	6.9	8.1	5.4	0.0	ri		0	0.7	8.0	12.3	19.4
17.	8.1	10.7	6.6	0.0	ri		0	6.4	6.0	11.5	17.4
18.	7.7	9.6	6.4				0	1.0	2.4	5.2	7.3
19.	6.4	9.4	5.0				0	0.3	1.6	3.3	4.9
20.	6.6	9.2	4.4				0	0.3	3.3	6.4	9.9
21.	6.6	9.1	4.7	0.0	ri		0	0.1	4.4	8.0	12.7
22.	7.3	10.6	5.3	0.2	ri		0	2.7	5.3	7.8	13.4
23.	7.8	10.5	5.6				0	3.7	5.7	8.8	15.2
24.	8.7	12.2	6.7	0.0	ri		0	0.7	4.6	9.9	13.5
25.	7.7	10.9	6.4	1.7	ri		0	1.2	2.3	5.8	7.9
26.	5.1	8.1	4.1	0.0	ri		0	14.3	2.2	5.0	7.4
27.	4.2	8.7	-0.5				0	12.6	2.5	4.6	6.6
28.	4.9	8.9	2.0	0.7	ri		0	11.6	3.1	8.3	13.4
29.	3.6	7.4	2.1				0	13.5	8.1	11.0	19.9
30.	4.2	6.8	0.6				0	9.9	5.2	11.3	20.9



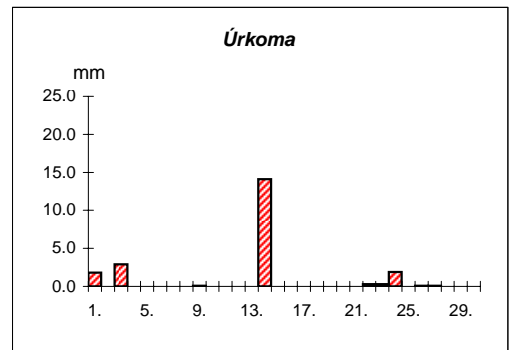
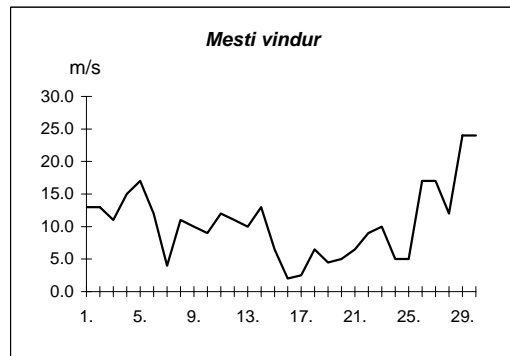
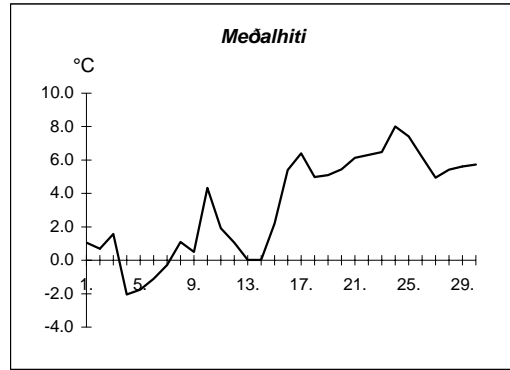
Meðalhiti	=	3.9 °C
Frávik frá meðaltali 1961-90	=	1.0 °C
Meðalhámarkshiti	=	7.4 °C
Meðallágmarkshiti	=	1.3 °C
Úrkomumagn	=	21.5 mm
Hlutfall úrkomu af meðaltali 1961-90	=	37.1 %
Meðalvindhraði	=	3.9 m/s
Sólskinsstundir	=	207.2 klst

Dags	Meðalhiti (°C)	Hámark (°C)	Lágmark (°C)	Úrkoma (mm)	Úrkomutegund	Snjódýpt (cm)	Snjóhula (0-4)	Sólskin(klst)	Meðalvindur (m/s)	Mesti vindur (m/s)	Hviða (m/s)
1.	-0.6	2.5	-0.8	0.2	sn		2	0.0	1.9	5.3	11.7
2.	-0.3	1.9	-2.8				2	0.5	2.0	5.5	10.1
3.	-1.2	1.7	-1.9	0.9	sn	12	4	0.0	2.6	5.5	11.6
4.	-3.4	-0.7	-4.4	0.5	sn		2	3.2	3.1	8.2	11.2
5.	-3.9	0.0	-6.6	0.1	sn		2	9.3	1.7	3.3	5.3
6.	-1.6	2.7	-6.2	0.0	sn		2	5.9	2.1	4.8	7.9
7.	3.0	8.0	-3.3				2	6.1	2.8	5.7	11.0
8.	-1.3	6.7	-1.6				2	0.0	4.4	8.1	12.0
9.	-1.6	1.9	-5.2	0.2	sn		0	1.9	1.6	4.3	7.6
10.	1.9	3.6	-1.5	6.1	sl		2	0.0	2.6	5.1	9.3
11.	0.3	3.0	0.0	1.7	sl		2	0.0	1.9	5.8	13.2
12.	-1.0	1.7	-2.2	0.3	sl		0	2.4	1.1	4.6	6.8
13.	-1.7	1.3	-5.0			2	4	1.2	1.9	3.7	8.6
14.	-1.4	1.6	-5.2				2	11.1	1.5	3.2	4.9
15.	3.1	7.9	-3.1				0	3.7	2.9	6.0	14.3
16.	5.3	10.6	0.0				0	12.6	2.0	4.1	8.1
17.	5.1	9.7	1.2				0	12.9	1.2	3.7	6.9
18.	4.9	10.3	0.2				0	12.9	2.0	3.3	5.5
19.	5.0	10.0	0.5				0	12.8	1.7	3.6	4.8
20.	4.2	9.5	0.0				0	12.1	1.9	4.5	6.1
21.	4.4	9.7	-1.1				0	11.9	2.0	4.5	6.4
22.	3.8	7.7	1.3				0	13.8	1.7	4.4	6.5
23.	5.5	9.4	-0.5				0	4.6	2.1	6.1	11.2
24.	6.2	11.6	1.7	0.0	ri		0	12.1	2.5	4.7	6.4
25.	2.8	8.1	1.2	0.0	ri		0	0.0	1.5	3.2	4.5
26.	1.0	4.7	0.6	2.2	sl		0	0.0	7.5	10.4	15.6
27.	0.5	2.5	0.0	0.0	sl		0	0.0	4.7	8.6	13.8
28.	1.2	2.9	0.1	0.1	ri		0	0.0	5.3	9.7	14.7
29.	1.2	2.2	0.7	0.5	sl		0	0.0	8.1	11.3	15.5
30.	1.4	2.3	0.0	1.1	sl		0	0.0	6.5	9.3	14.8



Meðalhiti	=	1.4 °C
Frávik frá meðaltali 1961-90	=	-0.2 °C
Meðalhámarkshiti	=	5.2 °C
Meðallágmarkshiti	=	-1.5 °C
Úrkomumagn	=	13.9 mm
Hlutfall úrkomu af meðaltali 1961-90	=	47.9 %
Meðalvindhraði	=	2.8 m/s
Sólskinsstundir	=	151.0 klst

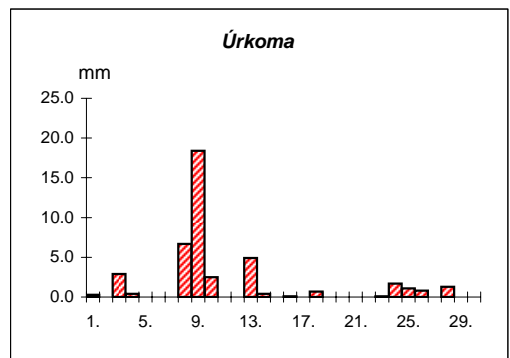
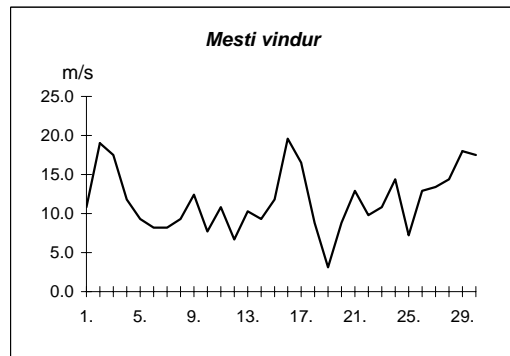
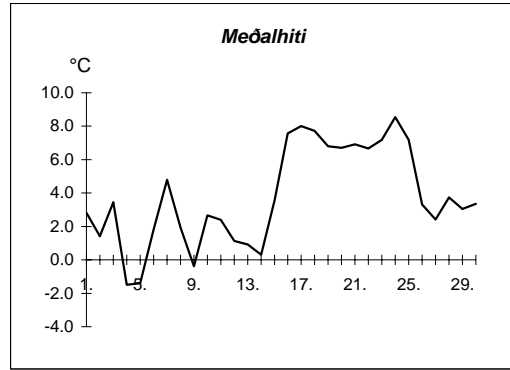
Dags	Meðalhiti (°C)	Hámark (°C)	Lágmark (°C)	Úrkoma (mm)	Úrkomutegund	Snjódýpt (cm)	Snjöhula (0-4)	Sólskín(klst)	Meðalvindur (m/s)	Mest vindur (m/s)
1.	1.1	3.6	0.3	1.8	sl		2		9.5	13.0
2.	0.7	2.6	-1.6	0.0	sl		2		8.7	13.0
3.	1.6	5.1	-0.4	2.9	sl	3	4		6.1	11.0
4.	-2.1	3.9	-4.0	0.0	sl		2		12.0	15.0
5.	-1.8	1.0	-3.2				2		11.3	17.0
6.	-1.1	2.3	-3.6				2		7.0	12.0
7.	-0.3	3.1	-4.7				2		2.0	4.0
8.	1.1	4.3	0.0				2		7.5	11.0
9.	0.5	3.4	-2.2	0.1	sn		2		5.8	10.0
10.	4.3	8.2	0.7				2		6.3	9.0
11.	1.9	6.6	1.8	0.0	sn		2		9.0	12.0
12.	1.1	4.7	-1.6	0.0	sn		0		8.8	11.0
13.	0.0	3.5	-2.0				0		5.5	10.0
14.	0.0	4.9	-1.8	14.1	sn	15	4		7.0	13.0
15.	2.2	7.0	-4.2				2		3.0	6.5
16.	5.4	8.6	1.5				2		0.6	2.0
17.	6.4	10.4	3.3				0		0.9	2.5
18.	5.0	9.7	2.3	0.0	ri		0		2.9	6.5
19.	5.1	9.8	0.5				0		2.3	4.5
20.	5.5	9.6	1.5				0		1.9	5.0
21.	6.1	10.8	3.0				0		4.2	6.5
22.	6.3	9.8	4.3	0.3	ri		0		5.8	9.0
23.	6.5	7.8	5.1	0.3	ri		0		7.8	10.0
24.	8.0	11.6	6.1	1.9	ri		0		4.1	5.0
25.	7.4	11.0	5.0				0		3.0	5.0
26.	6.2	10.2	5.0	0.1	ri		0		9.0	17.0
27.	5.0	10.4	2.1	0.1	ri		0		8.3	17.0
28.	5.4	9.4	2.5				0		6.4	12.0
29.	5.6	9.2	4.2				0		15.1	24.0
30.	5.7	8.8	2.3				0		13.5	24.0



Meðalhiti	=	3.3 °C
Meðalhámarkshiti	=	7.0 °C
Meðallágmarkshiti	=	0.7 °C
Úrkomumagn	=	21.6 mm
Meðalvindhraði	=	6.5 m/s

Útgefandi : **Veðurstofa Íslands**
 Heimilisfang : **Bústaðavegur 9**
150 Reykjavík

Dags	Meðalhiti (°C)	Hámark (°C)	Lágmark (°C)	Úrkoma (mm)	Úrkomutegund	Snjódýpt (cm)	Snjóhula (0-4)	Sólskín(klst)	Meðalvindur (m/s)	Mesti vindur (m/s)	Hviða (m/s)
1.	2.8	5.5	-0.5	0.3	ri		0		6.1	10.8	13.4
2.	1.4	5.0	-1.5				0		9.6	19.0	24.2
3.	3.5	6.9	0.9	2.9	sl		0		9.9	17.5	23.7
4.	-1.5	7.5	-2.8	0.4	sl		0		8.1	11.8	15.4
5.	-1.4	1.3	-5.9				0		4.5	9.3	12.4
6.	1.8	3.9	-1.7				0		4.4	8.2	10.3
7.	4.8	7.6	1.8				0		5.0	8.2	10.8
8.	1.9	6.5	1.2	6.7	ri		0		6.4	9.3	12.9
9.	-0.4	3.7	-1.7	18.4	sn	15	4		7.0	12.4	16.5
10.	2.7	5.5	-2.0	2.5	sn		2		4.1	7.7	11.8
11.	2.4	5.4	-0.6				2		6.3	10.8	13.9
12.	1.1	4.5	-3.5				2		3.3	6.7	8.8
13.	0.9	3.0	-0.2	4.9	sn	7	4		5.6	10.3	12.9
14.	0.3	3.0	-1.9	0.4	sl		2		4.4	9.3	12.4
15.	3.6	7.5	-3.2				2		7.0	11.8	17.0
16.	7.6	9.7	5.2	0.1	ri		0		14.0	19.6	25.7
17.	8.0	9.7	6.4				0		12.6	16.5	23.2
18.	7.7	10.0	6.3	0.7	ri		0		3.3	8.8	11.8
19.	6.8	9.3	5.3				0		1.9	3.1	4.1
20.	6.7	11.0	5.2	0.0	ri		0		5.0	8.8	11.8
21.	6.9	9.0	5.6	0.0	ri		0		8.3	12.9	17.0
22.	6.7	9.9	4.3				0		7.0	9.8	13.4
23.	7.2	10.7	4.4	0.1	ri		0		7.2	10.8	14.4
24.	8.5	11.1	6.7	1.7	ri		0		8.2	14.4	20.6
25.	7.2	9.5	6.0	1.1	ri		0		3.4	7.2	10.3
26.	3.3	8.9	2.7	0.8	ri		0		9.5	12.9	17.0
27.	2.4	4.7	0.0				0		8.8	13.4	16.5
28.	3.7	6.2	1.7	1.3	ri		0		8.8	14.4	18.5
29.	3.1	7.0	1.6	0.0	ri		0		13.9	18.0	23.7
30.	3.4	5.9	0.4				0		13.8	17.5	22.1



Meðalhiti	=	3.8 °C
Frávik frá meðaltali 1961-90	=	0.9 °C
Meðalhámarkshiti	=	7.0 °C
Meðallágmarkshiti	=	1.3 °C
Úrkomumagn	=	42.3 mm
Hlutfall úrkomu af meðaltali 1961-90	=	53.2 %
Meðalvindhraði	=	7.2 m/s