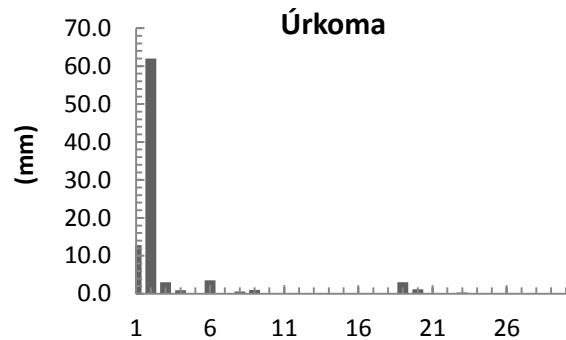
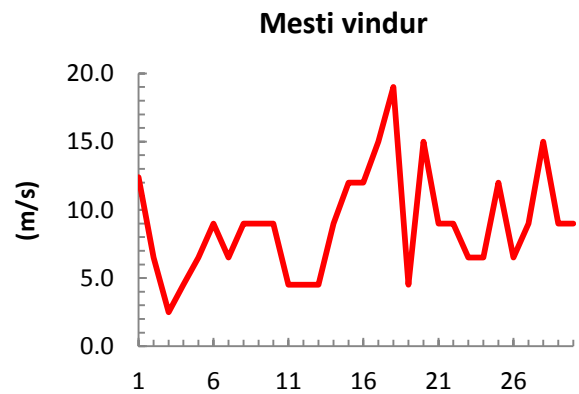
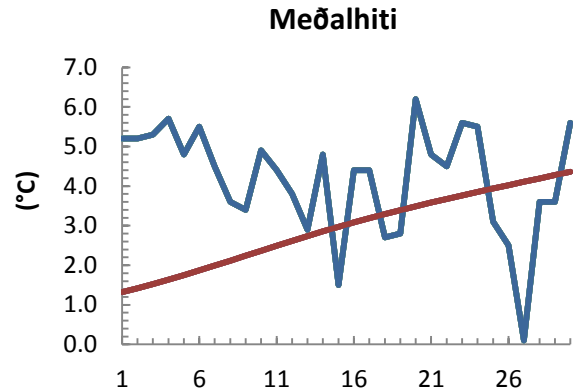


dagur	meðalhiti (°C)	Hámark (°C)	Lágmark (°C)	Úrkoma (mm)	Úrkomutegund	Snjódýpt (cm)	Snjóhula (0-4)	Sólskin (klst)	Meðalvindur (m/s)	Mesti vindur (m/s)	Hviða (m/s)
1	5.2	6.4	0.2	12.8	sl	0	0		9.4	12.4	
2	5.2	8.0	3.4	62.0	ri	0	0		3.6	6.5	
3	5.3	9.0	2.0	3.0	ri	0	0		0.9	2.5	
4	5.7	9.4	3.6	0.9	ri	0	0		3.1	4.5	
5	4.8	7.5	3.4			0	0		3.3	6.5	
6	5.5	8.5	4.4	3.5	ri	0	0		5.6	9.0	
7	4.5	8.4	1.5	0.1	ri	0	0		2.6	6.5	
8	3.6	6.8	2.6	0.6	ri	0	0		6.2	9.0	
9	3.4	5.0	2.0	1.0	ri	0	0		6.7	9.0	
10	4.9	8.5	1.6			0	0		5.1	9.0	
11	4.4	7.6	0.6			0	0		2.2	4.5	
12	3.8	7.0	1.6			0	0		2.7	4.5	
13	2.9	5.0	1.6			0	0		2.5	4.5	
14	4.8	8.4	1.5			0	0		6.6	9.0	
15	1.5	5.0	-1.6			0	0		5.2	12.0	
16	4.4	6.4	1.4			0	0		4.0	12.0	
17	4.4	7.4	2.2			0	0		9.1	15.0	
18	2.7	5.0	0.6	0.1	ri	0	0		11.8	19.0	
19	2.8	5.0	-0.8	3.0	sn	4	4		2.5	4.5	
20	6.2	8.0	3.0	1.2	ri	0	0		10.1	15.0	
21	4.8	8.0	2.0			0	0		4.6	9.0	
22	4.5	8.5	0.4			0	0		3.9	9.0	
23	5.6	11.2	2.4	0.3	ri	0	0		2.5	6.5	
24	5.5	9.8	2.2			0	0		4.0	6.5	
25	3.1	6.8	0.4			0	0		7.5	12.0	
26	2.5	5.5	0.5			0	0		4.2	6.5	
27	0.1	4.6	-1.5			0	0		5.9	9.0	
28	3.6	6.6	-0.2			0	0		10.7	15.0	
29	3.6	6.8	1.2			0	0		3.8	9.0	
30	5.6	7.5	2.5			0	0		6.1	9.0	



Meðalhiti (°C)	4.2
Frávik frá meðaltali 1961 - 1990 (°C)	1.4
Meðalhámarkshiti (°C)	7.3
Meðallágmarkshiti (°C)	1.5
Úrkomumagn (mm)	88.5
Hlutfall úrkomu af meðaltali 1961-1990 (%)	104.2
Meðalvindhraði (m/s)	5.2