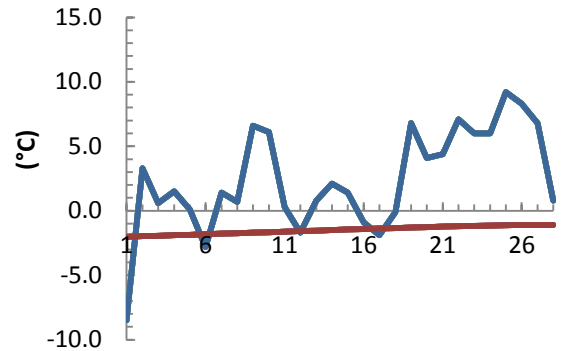


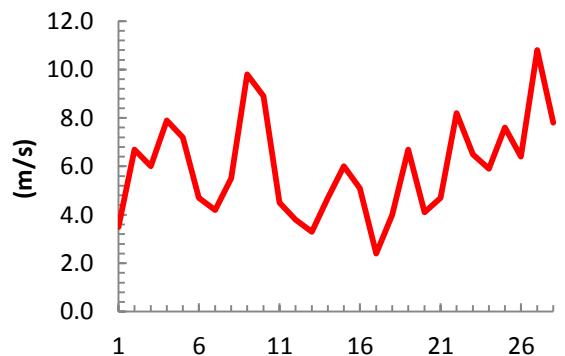
dagur	meðalhiti (°C)	Hámark (°C)	Lágmark (°C)	Úrkoma (mm)	Úrkomutegund	Snjódýpt (cm)	Snjóhula (0-4)	Sólskin (klst)	Meðalvindur (m/s)	Mesti vindur (m/s)	Hviða (m/s)
1	-8.5	-6.1	-8.9			16	4	2.2	1.6	3.5	5.4
2	3.3	5.8	-10.3			16	4	0.0	3.2	6.7	13.3
3	0.6	5.9	-2.1	0.0		13	4	1.7	2.7	6.0	11.4
4	1.5	2.5	-2.4	4.8	sn	18	4	0.0	4.0	7.9	11.7
5	0.1	4.2	-0.3	9.8	sl	15	4	0.3	3.1	7.2	10.8
6	-2.8	-0.3	-6.7	3.5	sn	14	4	0.2	2.1	4.7	7.9
7	1.4	4.5	-2.4			14	4	1.6	1.2	4.2	8.6
8	0.7	2.5	-4.2	0.0		14	4	1.2	2.3	5.5	9.3
9	6.6	7.4	0.8	1.2	ri	9	4	0.0	2.9	9.8	20.6
10	6.1	10.1	4.0			8	4	5.4	4.1	8.9	18.2
11	0.3	4.4	-1.0			7	4	3.3	1.8	4.5	7.9
12	-1.7	1.8	-3.6			7	4	2.1	1.2	3.8	6.6
13	0.8	3.0	-2.0			7	4	0.0	1.7	3.3	8.5
14	2.1	3.1	2.0	1.7	ri	0	2	0.0	3.1	4.7	6.9
15	1.4	3.5	1.1	2.8	sl	0	0	0.0	4.0	6.0	9.8
16	-0.9	2.0	-1.2			0	0	0.2	1.3	5.1	6.9
17	-1.9	0.6	-2.6			6	4	0.0	0.7	2.4	4.7
18	-0.1	0.2	-2.6	2.3	sn	0	2	2.5	1.4	4.0	7.5
19	6.8	8.2	0.0			0	2	3.1	3.4	6.7	12.3
20	4.1	8.0	3.4			0	2	1.2	0.9	4.1	7.9
21	4.4	8.2	1.6	0.7	ri	0	2	5.9	1.8	4.7	8.4
22	7.1	9.0	3.5			0	2	0.0	4.0	8.2	15.4
23	6.0	8.8	5.2			0	2	6.7	4.5	6.5	12.0
24	6.0	7.5	4.0			0	2	0.0	3.4	5.9	10.4
25	9.2	11.0	6.0	3.3	ri	0	0	0.0	5.0	7.6	16.2
26	8.3	11.8	6.8	0.3	ri	0	0	3.5	3.9	6.4	14.5
27	6.8	9.1	5.1	0.0		0	0	2.1	5.0	10.8	18.7
28	0.8	5.7	-1.7	0.0		0	0	0.0	2.5	7.8	12.5

Meðalhiti (°C)	2.4
Frávik frá meðaltali 1961 - 1990 (°C)	3.9
Meðalhámarkshiti (°C)	5.1
Meðallágmarkshiti (°C)	-0.3
Úrkomumagn (mm)	30.4
Hlutfall úrkomu af meðaltali 1961-1990 (%)	71.5
Meðalvindhraði (m/s)	2.7
Sólskinsstundir (klst)	43.2

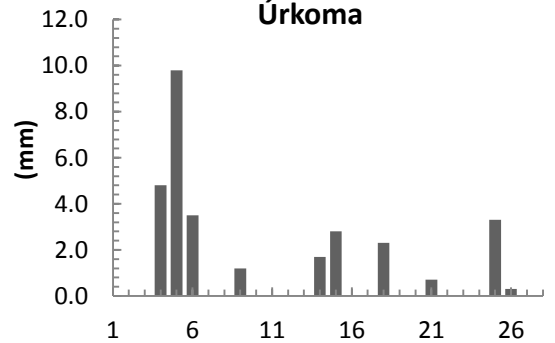
Meðalhiti



Mesti vindur



Úrkoma



Sólskin

