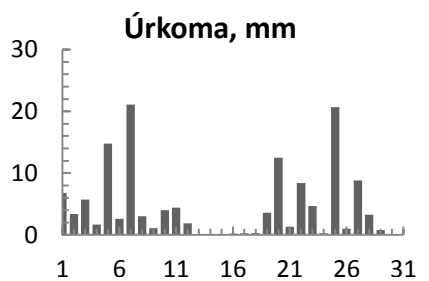
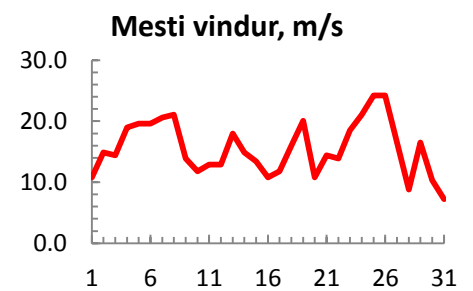
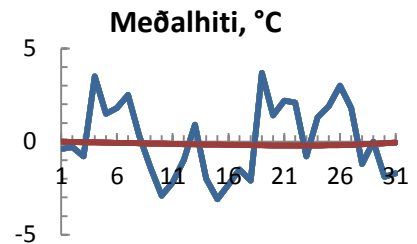


dagur	meðalhiti (°C)	Hámark (°C)	Lágmark (°C)	Úrkoma (mm)	Úrkomutegund	Snjódýpt (cm)	Snjóhula (0-4)	Sólskin (klst)	Meðalvindur (m/s)	Mesti vindur (m/s)	Hviða (m/s)
1	-0.4	3.0	-1.3	6.8	sl	3	4	0.0	3.4	10.8	13.4
2	-0.3	2.3	-3.0	3.4	sn	0	4	0.0	6.0	14.9	17.5
3	-0.8	1.2	-2.6	5.7	sn	12	4	0.0	6.6	14.4	19.0
4	3.5	6.9	-2.2	1.7	sl	8	4	0.0	11.0	19.0	25.2
5	1.5	8.1	0.4	14.8	sl	0	0	0.0	9.9	19.6	24.2
6	1.8	2.4	-1.2	2.6	sl	0	2	0.0	9.9	19.6	27.8
7	2.5	6.3	-1.5	21.1	sl	0	0	0.0	14.5	20.6	27.8
8	0.3	5.4	-1.5	3.0	sl	0	0	0.0	12.1	21.1	27.8
9	-1.4	1.2	-3.1	1.1	sl	0	2	0.0	7.8	13.9	18.5
10	-2.9	-0.6	-4.1	4.0	sn	8	4	0.0	3.5	11.8	14.9
11	-2.2	-1.4	-4.8	4.4	sn	10	4	0.0	7.2	12.9	16.0
12	-1.0	0.9	-3.1	1.9	sn	11	4	0.0	8.4	12.9	17.0
13	0.9	2.6	-0.6	0.0		10	4	0.0	13.6	18.0	23.2
14	-2.0	1.0	-3.9			8	4	0.0	9.9	14.9	18.5
15	-3.1	-1.2	-4.2			0	0	0.0	9.2	13.4	16.0
16	-2.3	-1.1	-4.1	0.2	sn	7	4	0.0	6.1	10.8	15.4
17	-1.5	0.0	-2.6	0.3	sn	7	4	0.0	8.0	11.8	15.4
18	-2.1	0.7	-6.6	0.3	sn	7	4	0.0	7.6	16.0	24.2
19	3.7	4.9	0.4	3.6	ri	0	0	0.0	13.7	20.1	28.8
20	1.4	4.7	0.2	12.5	sl	0	0	0.0	5.5	10.8	14.9
21	2.2	3.3	0.5	1.3	sl	0	2	0.0	7.3	14.4	20.1
22	2.1	4.5	1.0	8.4	sl	0	2	0.0	6.6	13.9	18.5
23	-0.8	2.1	-2.2	4.7	sl	0	2	0.0	12.6	18.5	25.2
24	1.3	1.4	-3.0	0.3	sn	0	2	0.0	11.4	21.1	26.3
25	1.9	5.7	0.6	20.7	sl	0	0	0.0	15.7	24.2	31.4
26	3.0	5.5	0.2	1.0	sl	1	4	0.0	10.5	24.2	30.4
27	1.8	6.4	0.3	8.8	ri	0	0	0.0	8.6	16.5	21.1
28	-1.2	1.9	-3.4	3.3	sl	0	2	0.0	4.0	8.8	10.8
29	0.0	1.9	-4.1	0.8	sn	0	2	0.0	10.2	16.5	21.6
30	-1.9	0.2	-2.6			0	2	0.0	7.8	10.3	13.9
31	-1.7	1.0	-3.3	0.0		0	2	0.0	3.9	7.2	9.8



Meðalhiti (°C)	0.1
Frávik frá meðaltali 1961 - 1990 (°C)	0.2
Meðalhámarkshiti (°C)	2.6
Meðallágmarkshiti (°C)	-2.1
Úrkomumagn (mm)	136.7
Hlutfall úrkomu af meðaltali 1961-1990 (%)	139.1
Meðalvindhraði (m/s)	8.8