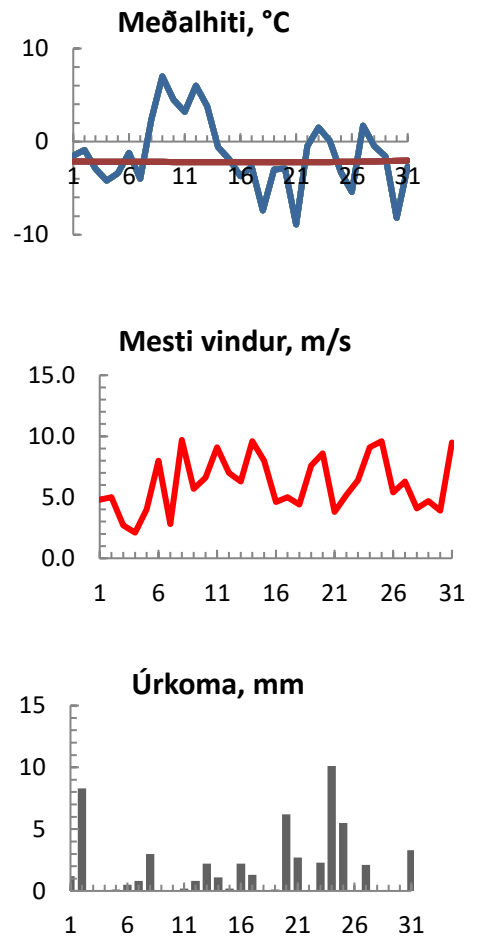


dagur	meðalhiti (°C)	Hámark (°C)	Lágmark (°C)	Úrkoma (mm)	Úrkomutegund	Snjódýpt (cm)	Snjóhula (0-4)	Sólskin (klst)	Meðalvindur (m/s)	Mesti vindur (m/s)	Hviða (m/s)
1	-1.5	0.6	-3.3	1.2	sn	37	4	1.2	4.8	7.8	
2	-0.9	0.6	-1.8	8.3	sn	39	0	2.4	5.0	9.9	
3	-2.9	-0.5	-4.1			39	0	0.5	2.7	6.3	
4	-4.2	-1.5	-6.3			39	0	1.0	2.1	3.9	
5	-3.4	1.0	-5.1	0.1	sn	39	0	1.4	4.0	6.7	
6	-1.2	2.7	-7.4	0.5	sn	40	0	3.6	8.0	16.4	
7	-4.0	-1.9	-6.0	0.8	sn	41	0	0.8	2.8	6.5	
8	2.4	3.8	-4.5	3.0	sl	40	0	1.8	9.7	9.7	
9	7.0	8.0	0.4	0.0		38	0	2.8	5.7	11.4	
10	4.5	8.2	2.6	0.0		35	0	3.2	6.6	13.1	
11	3.2	5.5	0.7	0.2	ri	20	0	3.8	9.1	16.1	
12	6.0	9.2	2.2	0.8	ri	15	0	2.9	7.0	13.3	
13	3.8	5.0	2.4	2.2	ri	0	0	4.2	6.3	12.8	
14	-0.6	5.0	-3.0	1.1	sl	0	0	4.6	9.6	20.8	
15	-1.9	-0.1	-4.1	0.2	sn	10	0	3.3	8.0	14.2	
16	-3.7	-1.0	-6.6	2.2	sn	14	0	1.5	4.6	9.1	
17	-2.7	2.3	-5.0	1.3	sn	14	0	1.9	5.0	9.1	
18	-7.4	-2.4	-10.6	0.0		14	0	1.2	4.4	7.4	
19	-3.0	-1.8	-5.7	0.1	sn	14	0	2.4	7.6	11.9	
20	-2.9	-0.6	-5.9	6.2	sn	16	0	2.8	8.6	12.8	
21	-8.9	-2.0	-13.5	2.7	sn	0	0	1.4	3.8	6.4	
22	-0.5	0.1	-8.9			18	0	1.7	5.2	11.6	
23	1.5	2.7	0.0	2.3	sl	20	0	3.6	6.4	14.2	
24	0.1	2.1	-0.1	10.1	sl	25	0	5.4	9.1	13.0	
25	-3.3	-0.1	-4.5	5.5	sn	30	0	4.1	9.6	13.2	
26	-5.4	-4.1	-9.6	0.0		30	0	1.5	5.4	10.9	
27	1.7	5.2	-5.0	2.1	sl	25	0	1.6	6.3	12.6	
28	-0.5	1.5	-2.0			22	0	2.4	4.1	8.3	
29	-1.6	0.3	-2.6			20	0	2.5	4.7	8.3	
30	-8.2	-2.0	-9.8			21	0	1.8	3.9	5.4	
31	-2.7	-0.2	-8.0	3.3	sn	29	0	3.8	9.5	13.9	



Meðalhiti (°C)	-1.3
Frávik frá meðaltali 1961 - 1990 (°C)	0.8
Meðalhámarkshiti (°C)	1.5
Meðallágmarkshiti (°C)	-4.4
Úrkomumagn (mm)	54.2
Hlutfall úrkomu af meðaltali 1961-1990 (%)	98.2
Meðalvindhraði (m/s)	2.5
Sólskinsstundir (klst)	8.3
