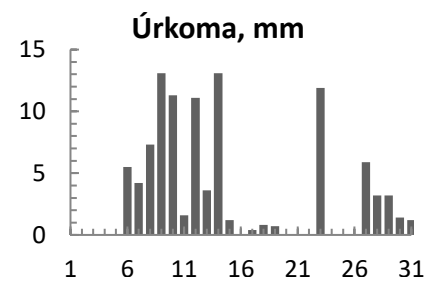
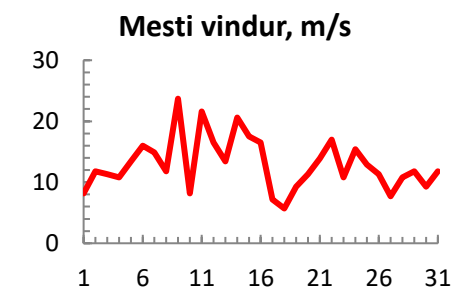
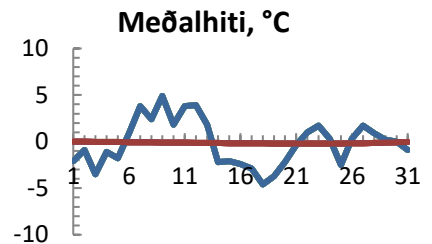


dagur	meðalhiti (°C)	Hámark (°C)	Lágmark (°C)	Úrkoma (mm)	Úrkomutegund	Snjódýpt (cm)	Snjöhula (0-4)	Sólskin (klst)	Meðalvindur (m/s)	Mesti vindur (m/s)	Hviða (m/s)
1	-2.1	2.7	-3.3			0	4		4.5	8.2	10.3
2	-0.9	1.0	-6.5			0	0		8.3	11.8	14.4
3	-3.5	1.1	-4.7			0	0		3.6	11.3	12.9
4	-1.1	0.4	-5.8			0	0		7.4	10.8	12.9
5	-1.8	0.7	-4.5			0	0		5.4	13.4	17.5
6	0.9	4.7	-1.7	5.5	sl	0	0		5.3	16	22.1
7	3.8	6.7	-0.6	4.2	sl	0	0		9.9	14.9	21.6
8	2.4	6.6	1.0	7.3	ri	0	0		5.6	11.8	18
9	4.9	7.7	1.7	13.1	sl	0	0		11.9	23.7	36.6
10	1.8	4.4	0.1	11.3	sl	0	0		4.5	8.2	11.3
11	3.8	5.0	0.7	1.6	sl	0	0		10	21.6	29.9
12	3.9	7.5	2.8	11.1	sl	0	0		7.9	16.5	23.2
13	1.8	3.3	0.6	3.6	sl	0	0		9	13.4	21.1
14	-2.2	3.4	-10.0	13.1	sl	3	0		16.2	20.6	26.3
15	-2.1	2.5	-8.2	1.2	sn	3	0		5.8	17.5	21.6
16	-2.4	0.3	-5.3			3	0		8.6	16.5	20.6
17	-2.9	-0.2	-4.0	0.4	sn	5	0		3.7	7.2	9.8
18	-4.6	-2.8	-5.5	0.8	sn	5	0		3.4	5.7	7.2
19	-3.7	-2.4	-7.8	0.7	sn	5	0		3.7	9.3	11.8
20	-2.2	-0.3	-5.8			5	0		7.7	11.3	14.4
21	-0.4	1.4	-4.9			4	0		10.5	13.9	17.5
22	1.0	2.5	-0.1	0.0		0	0		11.4	17	22.7
23	1.7	3.3	0.5	11.9	sl	2	0		7.8	10.8	14.4
24	0.3	3.0	0.0			2	0		12.7	15.4	19.6
25	-2.5	2.5	-3.2			0	0		6.5	12.9	16
26	0.3	2.3	-4.8			0	0		6	11.3	14.4
27	1.7	2.9	1.2	5.9	ri	0	0		3.4	7.7	10.3
28	0.9	2.9	0.2	3.2	sl	0	0		5	10.8	13.4
29	0.2	2.3	-0.9	3.2	sl	3	0		5.3	11.8	13.9
30	0.0	1.8	-1.5	1.4	sn	5	0		5.7	9.3	11.8
31	-0.9	3.3	-2.1	1.2	sn	3	0		8	11.8	15.4



Meðalhiti (°C)	-0.1
Frávik frá meðaltali 1961 - 1990 (°C)	0.0
Meðalhámarkshiti (°C)	2.6
Meðallágmarkshiti (°C)	-2.7
Úrkomumagn (mm)	100.7
Hlutfall úrkomu af meðaltali 1961-1990 (%)	102.4
Meðalvindhraði (m/s)	7.2
