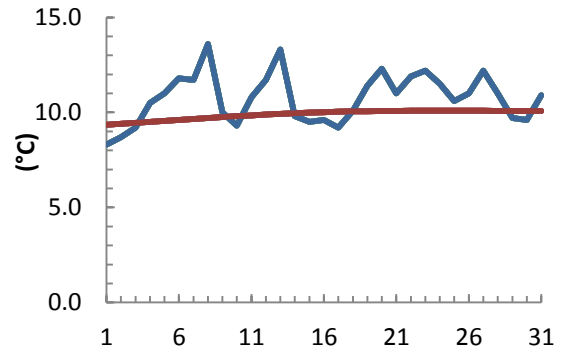


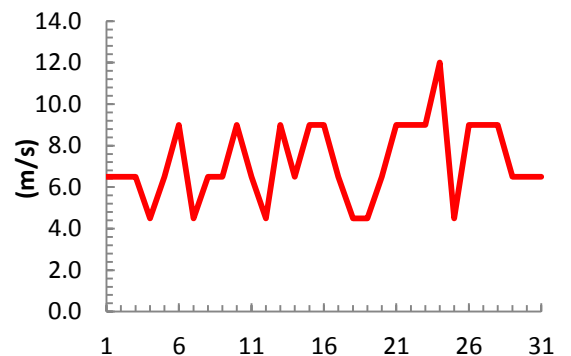
dagur	meðalhiti (°C)	Hámark (°C)	Lágmark (°C)	Úrkoma (mm)	Úrkomutegund	Snjódýpt (cm)	Snjóhula (0-4)	Sólskin (klst)	Meðalvindur (m/s)	Mesti vindur (m/s)	Hviða (m/s)
1	8.3	10.5	5.5	0.5	ri	0	0		4.0	6.5	
2	8.7	10.0	7.2	0.2	ri	0	0		3.7	6.5	
3	9.2	12.0	7.2	0.1	ri	0	0		4.2	6.5	
4	10.5	13.0	6.7			0	0		2.4	4.5	
5	11.0	13.0	8.2			0	0		4.1	6.5	
6	11.8	13.5	10.0			0	0		4.5	9.0	
7	11.7	15.5	8.7			0	0		1.6	4.5	
8	13.6	17.0	9.0			0	0		3.2	6.5	
9	10.0	16.0	8.2	0.8	ri	0	0		3.9	6.5	
10	9.3	14.0	6.2	0.3	ri	0	0		6.1	9.0	
11	10.8	13.5	6.7			0	0		2.7	6.5	
12	11.7	14.5	7.1			0	0		2.3	4.5	
13	13.3	18.0	8.2			0	0		5.6	9.0	
14	9.8	17.0	7.7			0	0		4.6	6.5	
15	9.5	11.5	5.7			0	0		4.2	9.0	
16	9.6	12.0	7.7	4.7	ri	0	0		3.1	9.0	
17	9.2	11.5	7.2	1.1	ri	0	0		4.8	6.5	
18	10.1	12.0	8.2	0.6	ri	0	0		3.1	4.5	
19	11.4	13.5	9.7	0.9	ri	0	0		2.8	4.5	
20	12.3	15.5	9.7	3.8	ri	0	0		2.8	6.5	
21	11.0	14.0	9.7	0.1	ri	0	0		5.4	9.0	
22	11.9	13.5	10.0	19.9	ri	0	0		5.8	9.0	
23	12.2	13.0	11.2	21.1	ri	0	0		6.9	9.0	
24	11.5	14.0	9.7	2.4	ri	0	0		7.2	12.0	
25	10.6	13.5	8.2	0.4	ri	0	0		2.5	4.5	
26	11.0	13.0	8.7	1.4	ri	0	0		3.9	9.0	
27	12.2	16.5	9.7	0.7	ri	0	0		6.4	9.0	
28	11.0	14.0	10.2			0	0		4.4	9.0	
29	9.7	12.5	6.7			0	0		3.9	6.5	
30	9.6	13.0	8.2			0	0		3.6	6.5	
31	10.9	14.0	7.2			0	0		3.0	6.5	

Meðalhiti (°C)	10.8
Frávik frá meðaltali 1961 - 1990 (°C)	0.3
Meðalhámarkshiti (°C)	13.7
Meðallágmarkshiti (°C)	8.2
Úrkomumagn (mm)	59.0
Hlutfall úrkomu af meðaltali 1961-1990 (%)	84.9
Meðalvindhraði (m/s)	4.1

Meðalhiti



Mesti vindur



Úrkoma

