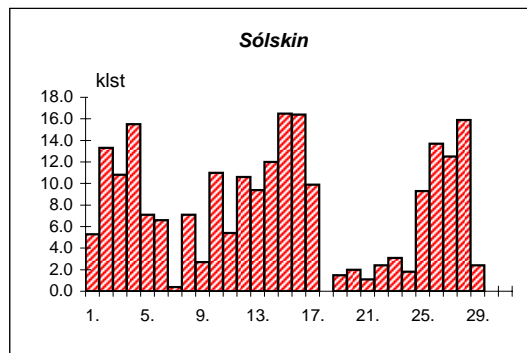
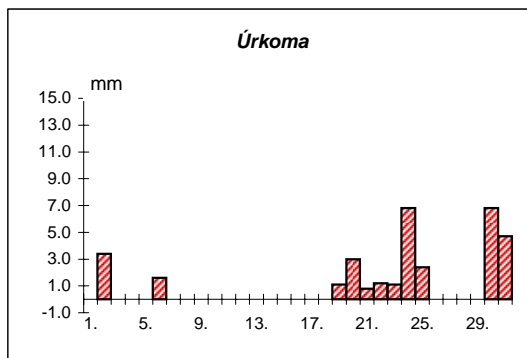
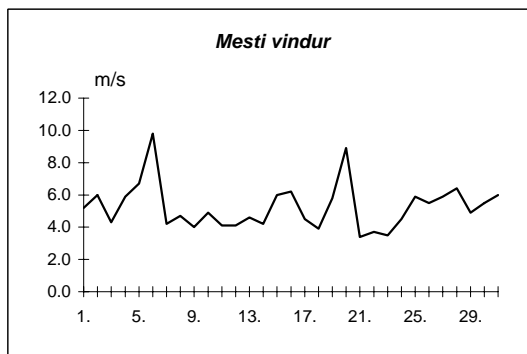
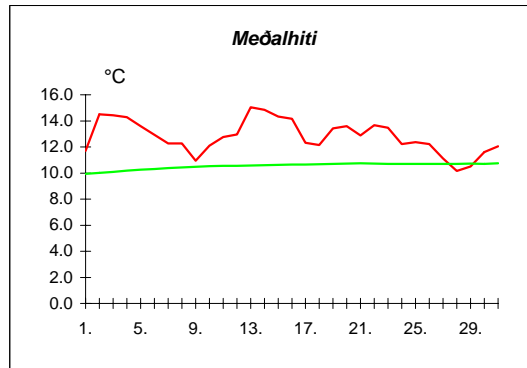
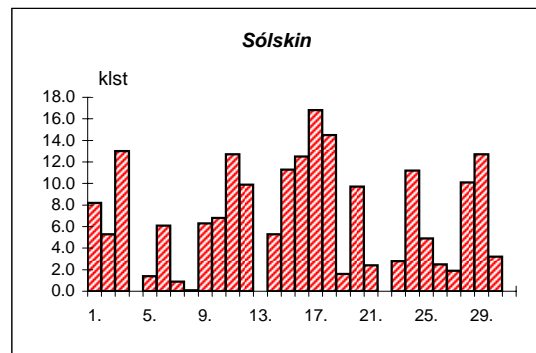
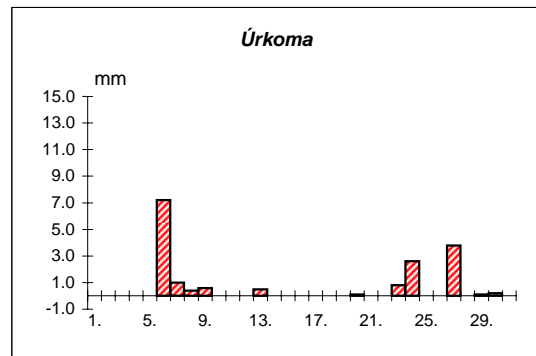
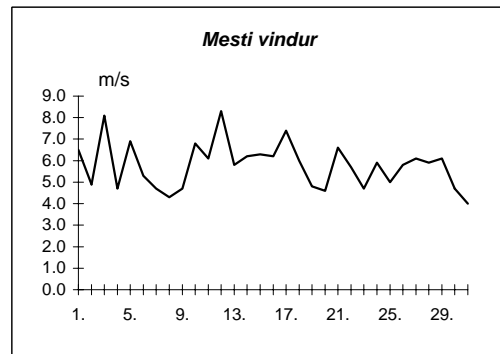
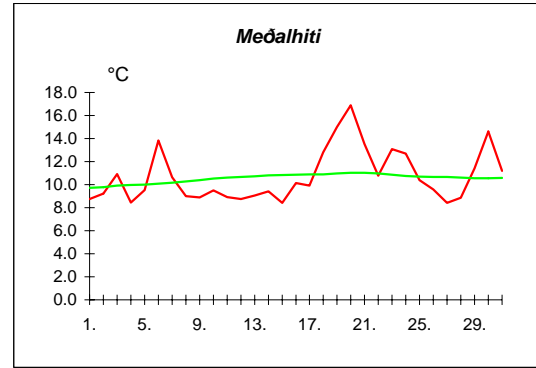


Dags	Meðalhiti (°C)	Hámark (°C)	Lágmark (°C)	Úrkoma (mm)	Úrkomutegund	Snjódypt (cm)	Snjóhula (0-4)	Sólskin(klst)	Meðalvindur (m/s)	Mesti vindur (m/s)	Hviða (m/s)
1.	11.7	14.7	9.5					5.3	1.9	5.2	7.3
2.	14.5	19.7	10.5	3.4	ri			13.3	2.4	6.0	10.7
3.	14.4	18.9	11.2					10.8	2.2	4.3	6.0
4.	14.3	19.0	10.9					15.5	2.3	5.9	9.0
5.	13.6	16.3	10.9					7.1	2.9	6.7	9.9
6.	12.9	15.4	11.5	1.6	ri			6.6	4.7	9.8	14.0
7.	12.3	14.1	10.0	0.0	ri			0.4	2.4	4.2	7.1
8.	12.3	13.7	10.5	0.0	ri			7.1	2.8	4.7	7.0
9.	10.9	13.7	9.5					2.7	2.1	4.0	5.7
10.	12.1	15.0	9.9					11.0	1.8	4.9	6.8
11.	12.8	15.6	10.4					5.4	1.9	4.1	6.2
12.	13.0	15.5	11.5					10.6	2.3	4.1	6.4
13.	15.0	19.9	8.7					9.4	2.5	4.6	8.9
14.	14.8	20.5	12.5					12.0	2.2	4.2	7.2
15.	14.3	18.0	11.4					16.5	2.7	6.0	9.1
16.	14.2	17.6	10.7					16.4	3.1	6.2	7.3
17.	12.3	15.4	11.2					9.9	2.9	4.5	7.3
18.	12.1	14.5	10.5					0.0	2.8	3.9	7.1
19.	13.4	15.6	11.4	1.1	ri			1.5	3.4	5.8	7.7
20.	13.6	15.6	11.4	3.0	ri			2.0	4.4	8.9	13.3
21.	12.9	15.1	11.2	0.8	ri			1.1	1.7	3.4	4.8
22.	13.7	17.0	10.5	1.2	ri			2.4	1.8	3.7	7.8
23.	13.5	16.2	12.0	1.1	ri			3.1	1.4	3.5	5.9
24.	12.2	14.8	11.0	6.8	ri			1.8	2.3	4.5	6.4
25.	12.4	15.4	8.7	2.4	ri			9.3	1.7	5.9	11.5
26.	12.2	16.5	8.0	0.0	ri			13.7	2.0	5.5	9.8
27.	11.1	16.2	8.4					12.5	2.5	5.9	9.5
28.	10.2	13.5	6.0					15.9	3.1	6.4	10.0
29.	10.5	12.5	7.3					2.4	2.2	4.9	7.2
30.	11.6	13.0	9.9	6.8	ri			0.0	3.5	5.5	9.9
31.	12.0	13.7	10.0	4.7	ri			0.0	2.9	6.0	10.5



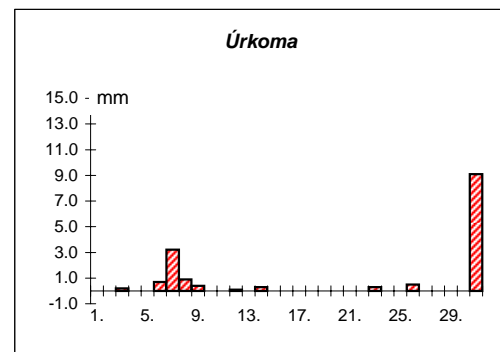
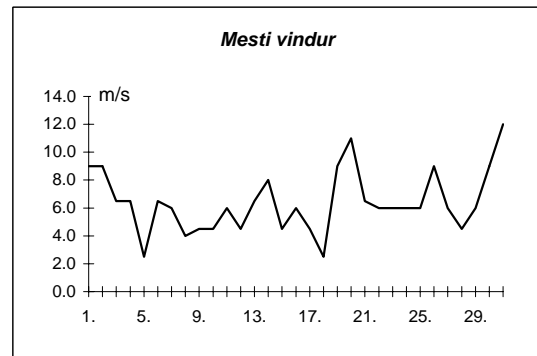
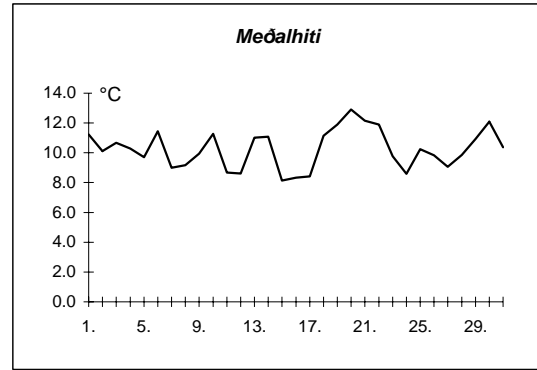
Meðalhiti	=	12.8 °C
Frávik frá meðaltali 1961-90	=	2.2 °C
Meðalhámarkshiti	=	15.9 °C
Meðallágmarkshiti	=	10.2 °C
Úrkomumagn	=	32.9 mm
Hlutfall úrkomu af meðaltali 1961-90	=	63.3 %
Meðalvindhraði	=	2.5 m/s
Sólskinsstundir	=	225.7 klst

Dags	Meðalhiti (°C)	Hámark (°C)	Lágmark (°C)	Úrkoma (mm)	Úrkomutegund	Snjódypt (cm)	Snjóhula (0-4)	Sólskin(klst)	Meðalvindur (m/s)	Mesti vindur (m/s)	Hviða (m/s)
1.	8.8	12.4	6.3					8.2	3.2	6.5	9.4
2.	9.2	11.9	7.3					5.3	2.7	4.9	6.7
3.	10.9	16.5	8.2					13.0	4.1	8.1	11.4
4.	8.4	12.9	7.9	0.0	ri			0.0	3.0	4.7	7.8
5.	9.5	13.6	7.6					1.4	2.5	6.9	10.5
6.	13.8	18.0	8.8	7.2	ri			6.1	1.9	5.3	8.6
7.	10.6	16.5	9.8	1.0	ri			0.9	3.1	4.7	6.9
8.	9.0	13.5	7.2	0.4	ri			0.1	2.6	4.3	6.5
9.	8.9	11.4	6.4	0.6	ri			6.3	2.8	4.7	7.0
10.	9.5	13.2	8.3	0.0	ri			6.8	2.8	6.8	9.3
11.	8.9	12.9	6.3					12.7	3.0	6.1	8.8
12.	8.7	11.4	6.6					9.9	3.6	8.3	12.2
13.	9.1	10.6	8.0	0.5	ri			0.0	3.6	5.8	9.5
14.	9.4	12.5	8.8	0.0	ri			5.3	3.7	6.2	9.2
15.	8.4	11.7	6.2	0.0	ri			11.3	2.8	6.3	9.0
16.	10.2	15.0	5.5					12.5	2.5	6.2	8.5
17.	9.9	14.0	6.2					16.8	3.5	7.4	10.1
18.	12.8	18.1	7.5					14.5	2.7	6.0	8.9
19.	15.0	18.7	9.5					1.6	2.5	4.8	9.2
20.	16.9	22.0	11.0	0.1	ri			9.7	1.7	4.6	8.3
21.	13.5	21.2	12.3					2.4	3.4	6.6	11.0
22.	10.8	14.0	8.5	0.0	ri			0.0	3.2	5.7	8.2
23.	13.1	16.2	10.0	0.8	ri			2.8	1.8	4.7	6.1
24.	12.7	16.1	10.3	2.6	ri			11.2	3.2	5.9	8.9
25.	10.4	15.1	6.7					4.9	2.1	5.0	9.9
26.	9.6	13.2	8.2					2.5	2.5	5.8	9.8
27.	8.4	11.5	6.8	3.8	ri			1.9	3.2	6.1	9.2
28.	8.9	12.0	5.6					10.1	3.0	5.9	8.3
29.	11.4	16.5	6.2	0.1	ri			12.7	2.0	6.1	8.2
30.	14.6	18.1	11.7	0.2	ri			3.2	2.7	4.7	8.7
31.	11.2	17.8	10.4	0.0	ri			0.0	1.8	4.0	8.2



Meðalhiti	=	10.7 °C
Frávik frá meðaltali 1961-90	=	0.2 °C
Meðalhámarkshiti	=	14.8 °C
Meðallágmarkshiti	=	8.1 °C
Úrkomumagn	=	17.3 mm
Hlutfall úrkomu af meðaltali 1961-90	=	52.4 %
Meðalvindhraði	=	2.8 m/s
Sólskinsstundir	=	194.1 klst

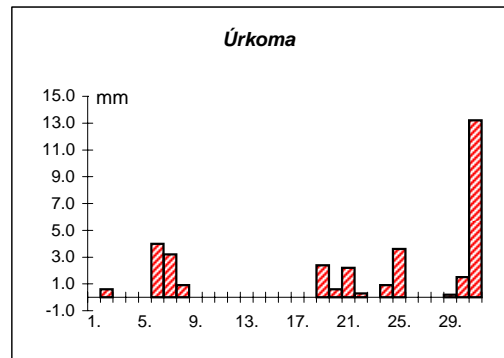
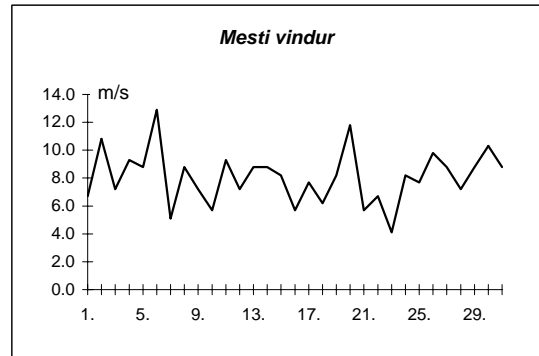
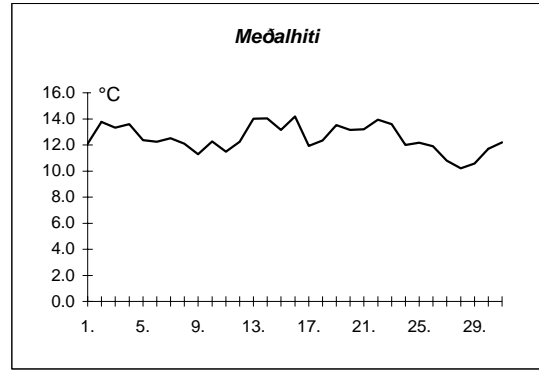
Dags	Meðalhiti (°C)	Hámark (°C)	Lágmark (°C)	Úrkoma (mm)	Úrkomutegund	Snjódypt (cm)	Snjóhula (0-4)	Sólskín(klst)	Meðalvindur (m/s)	Mesti vindur (m/s)
1.	11.2	16.2	7.5						4.3	9.0
2.	10.1	13.1	8.7						5.1	9.0
3.	10.7	14.2	8.0	0.2	ri				3.7	6.5
4.	10.3	12.5	8.0	0.0	ri				3.2	6.5
5.	9.7	12.5	8.4						1.9	2.5
6.	11.4	13.6	8.7	0.7	ri				4.1	6.5
7.	9.0	12.9	7.8	3.2	ri				2.4	6.0
8.	9.2	10.6	7.2	0.9	ri				1.4	4.0
9.	10.0	11.5	7.8	0.4	ri				3.2	4.5
10.	11.3	13.6	9.5						2.8	4.5
11.	8.7	12.2	8.0	0.0	ri				4.1	6.0
12.	8.6	10.8	6.2	0.1	ri				2.1	4.5
13.	11.0	14.7	8.2						3.6	6.5
14.	11.1	14.4	9.0	0.3	ri				4.4	8.0
15.	8.1	12.5	7.5	0.0	ri				3.8	4.5
16.	8.3	11.0	6.1	0.0	ri				3.4	6.0
17.	8.4	10.3	6.2	0.0	ri				2.2	4.5
18.	11.2	15.1	8.8						2.1	2.5
19.	11.9	15.7	7.2						2.6	9.0
20.	12.9	16.4	11.0						5.3	11.0
21.	12.2	14.8	7.5						2.3	6.5
22.	11.9	14.9	10.0						2.9	6.0
23.	9.8	12.2	9.0	0.3	ri				3.6	6.0
24.	8.6	10.9	7.8	0.0	ri				4.3	6.0
25.	10.2	13.6	6.6						4.8	6.0
26.	9.8	13.8	8.0	0.5	ri				4.9	9.0
27.	9.1	12.5	5.5						2.7	6.0
28.	9.8	14.5	4.7	0.0	ri				2.5	4.5
29.	10.9	14.2	6.2						2.3	6.0
30.	12.1	15.4	8.4						3.9	9.0
31.	10.4	14.4	9.5	9.1	ri				7.9	12.0



Meðalhiti	=	10.3 °C
Meðalhámarkshiti	=	13.4 °C
Meðallágmarkshiti	=	7.8 °C
Úrkomumagn	=	15.7 mm
Meðalvindhraði	=	3.5 m/s

Útgefandi : **Veðurstofa Íslands**  
 Heimilisfang : **Bústaðavegur 9**  
**150 Reykjavík**

Dags	Meðalhiti (°C)	Hámark (°C)	Lágmark (°C)	Úrkoma (mm)	Úrkomutegund	Snjódypt (cm)	Snjóhula (0-4)	Sólskin(klst)	Meðalvindur (m/s)	Mesti vindur (m/s)	Hviða (m/s)
1.	12.1	15.0	9.9						3.0	6.7	8.8
2.	13.8	17.8	10.2	0.6	ri				4.8	10.8	12.9
3.	13.3	17.6	11.0						4.1	7.2	10.8
4.	13.6	16.5	11.4						4.6	9.3	11.8
5.	12.4	15.5	9.4						4.3	8.8	10.8
6.	12.2	14.5	11.5	4.0	ri				6.1	12.9	17.5
7.	12.5	15.4	10.6	3.2	ri				2.8	5.1	6.7
8.	12.1	14.0	11.4	0.9	ri				4.9	8.8	10.8
9.	11.3	13.3	9.4	0.0	ri				5.6	7.2	9.3
10.	12.3	16.2	10.5						3.7	5.7	7.7
11.	11.5	13.4	10.0						4.9	9.3	12.4
12.	12.2	14.2	10.3	0.0	ri				3.5	7.2	8.8
13.	14.0	18.2	9.6	0.0	ri				5.4	8.8	11.3
14.	14.0	17.0	11.3						5.0	8.8	11.8
15.	13.2	17.1	9.1						5.4	8.2	10.8
16.	14.2	18.2	8.8						2.4	5.7	7.7
17.	11.9	16.0	10.1						5.0	7.7	10.8
18.	12.3	14.0	10.8						3.7	6.2	8.8
19.	13.5	15.9	11.7	2.4	ri				6.3	8.2	10.8
20.	13.2	15.4	11.6	0.6	ri				6.6	11.8	15.4
21.	13.2	16.0	11.1	2.2	ri				2.3	5.7	8.8
22.	14.0	17.5	10.6	0.3	ri				3.3	6.7	8.2
23.	13.6	16.3	10.8						2.2	4.1	6.2
24.	12.0	14.8	10.7	0.9	ri				4.8	8.2	10.3
25.	12.2	14.7	10.3	3.6	ri				3.4	7.7	9.8
26.	11.9	16.0	8.5						5.0	9.8	11.3
27.	10.8	14.9	8.8						6.4	8.8	11.3
28.	10.2	12.9	7.0						5.1	7.2	10.8
29.	10.6	14.5	5.9	0.2	ri				4.1	8.8	11.3
30.	11.7	14.3	10.9	1.5	ri				6.7	10.3	13.9
31.	12.2	14.5	10.5	13.2	ri				5.4	8.8	10.8



Meðalhiti	=	12.5 °C
Frávik frá meðaltali 1961-90	=	2.3 °C
Meðalhámarkshiti	=	15.5 °C
Meðallágmarkshiti	=	10.1 °C
Úrkomumagn	=	33.6 mm
Hlutfall úrkomu af meðaltali 1961-90	=	51.2 %
Meðalvindhraði	=	4.6 m/s