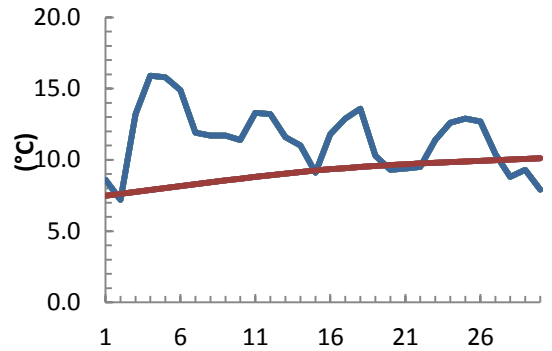


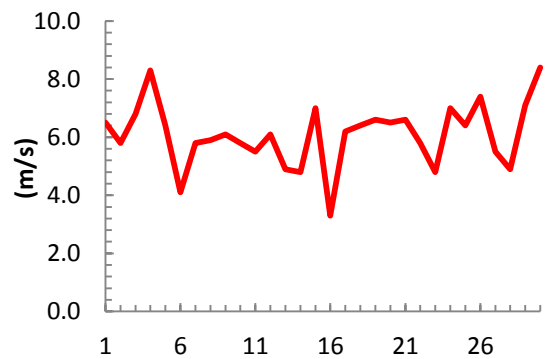
dagur	meðalhiti (°C)	Hámark (°C)	Lágmark (°C)	Úrkoma (mm)	Úrkomutegund	Snjódýpt (cm)	Snjóhúla (0-4)	Sólskin (klst)	Meðalvindur (m/s)	Mesti vindur (m/s)	Hviða (m/s)
1	8.6	13.6	7.0			0	0	2.9	2.5	6.5	9.3
2	7.2	9.4	5.2	2.1	ri	0	0	9.4	2.5	5.8	8.1
3	13.2	17.9	5.6			0	0	1.8	3.9	6.8	13.1
4	15.9	19.9	12.7	0.0		0	0	12.2	5.5	8.3	15.8
5	15.8	20.2	11.9			0	0	14.8	3.1	6.4	12.5
6	14.9	20.2	11.0			0	0	8.5	1.9	4.1	6.8
7	11.9	15.8	11.0	0.0		0	0	9.6	2.9	5.8	7.9
8	11.7	14.0	8.3			0	0	2.7	3.1	5.9	8.6
9	11.7	15.0	9.8	2.5	ri	0	0	5.2	2.3	6.1	7.9
10	11.4	14.6	9.8			0	0	9.6	2.6	5.8	8.4
11	13.3	19.3	8.5			0	0	7.3	2.4	5.5	10.0
12	13.2	17.7	8.6			0	0	2.2	2.5	6.1	9.2
13	11.6	15.8	10.0			0	0	9.7	1.4	4.9	11.7
14	11.0	15.9	7.0			0	0	16.7	2.6	4.8	10.5
15	9.1	15.9	7.0			0	0	11.1	3.6	7.0	9.7
16	11.8	17.6	5.6			0	0	15.7	1.4	3.3	6.1
17	12.9	19.0	9.5	0.0		0	0	15.3	3.2	6.2	10.2
18	13.6	17.5	9.9			0	0	10.0	2.6	6.4	12.0
19	10.3	18.4	9.1	0.3	ri	0	0	7.5	3.6	6.6	10.4
20	9.3	12.0	7.6	0.4	ri	0	0	3.0	3.2	6.5	10.1
21	9.4	12.0	7.4	0.0		0	0	7.3	3.2	6.6	9.4
22	9.5	12.1	7.4			0	0	7.1	2.7	5.8	8.3
23	11.4	15.5	7.5			0	0	9.7	1.7	4.8	6.5
24	12.6	18.0	10.7	0.0		0	0	8.5	3.0	7.0	10.0
25	12.9	16.5	8.1			0	0	15.5	2.9	6.4	8.6
26	12.7	16.5	10.2	0.0		0	0	4.3	3.9	7.4	12.2
27	10.4	15.9	8.0	0.0		0	0	4.3	2.8	5.5	11.1
28	8.8	12.0	6.9	1.6	ri	0	0	4.5	2.0	4.9	8.1
29	9.3	12.2	6.0	1.2	ri	0	0	13.7	3.2	7.1	10.5
30	7.9	11.1	5.5			0	0	10.5	4.0	8.4	13.0

Meðalhiti (°C)	11.4
Frávik frá meðaltali 1961 - 1990 (°C)	2.3
Meðalhámarkshiti (°C)	15.7
Meðallágmarkshiti (°C)	8.4
Úrkomumagn (mm)	8.1
Hlutfall úrkomu af meðaltali 1961-1990 (%)	28.7
Meðalvindhraði (m/s)	2.9
Sólskinsstundir (klst)	260.6

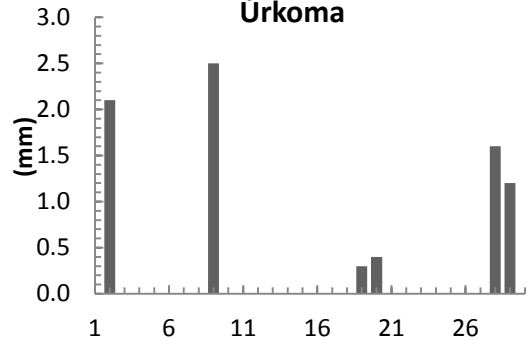
Meðalhiti



Mesti vindur



Úrkoma



Sólskin

