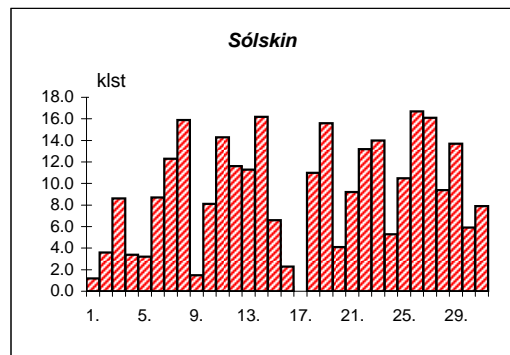
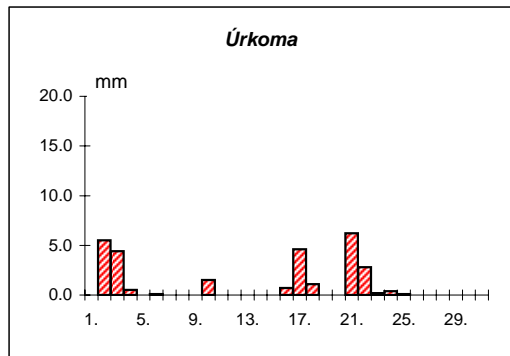
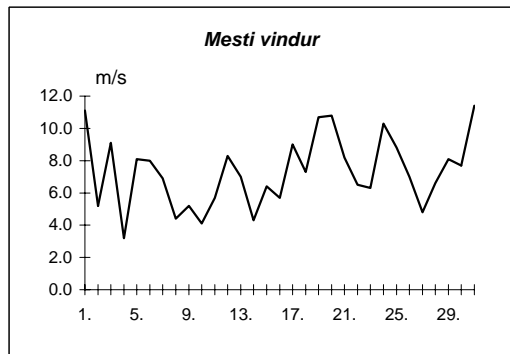
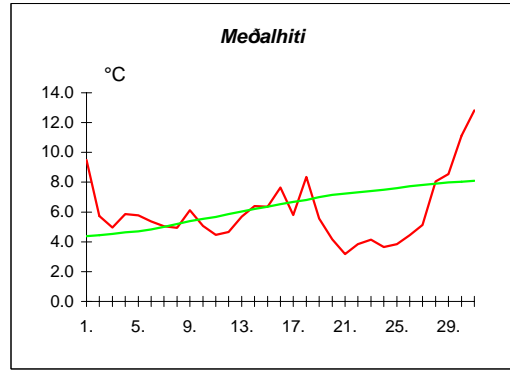


Reykjavík maí 2007

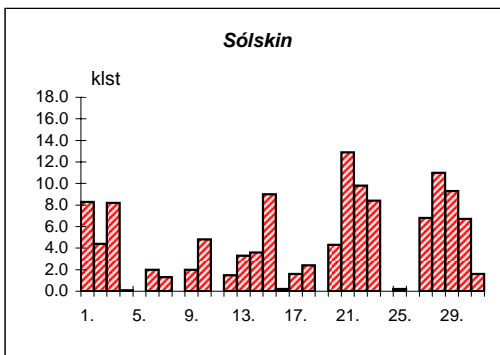
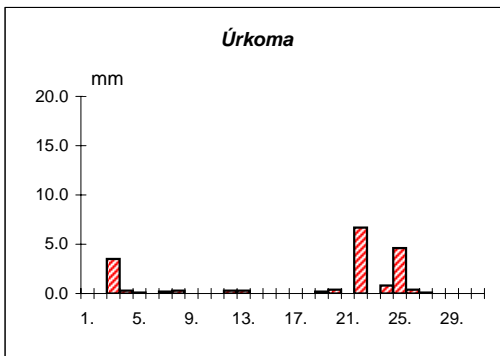
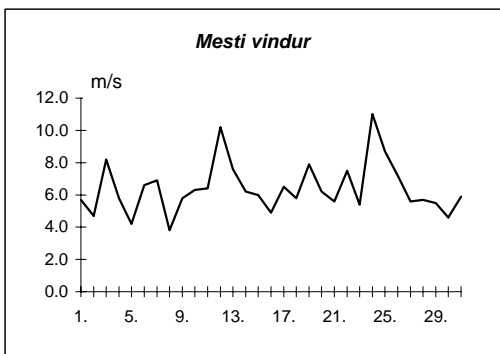
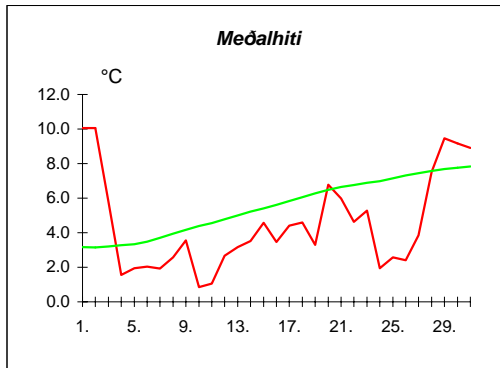
Dags	Meðalhiti (°C)	Hámark (°C)	Lágmark (°C)	Úrkoma (mm)	Úrkomutegund	Snjóþýpt (cm)	Snjóhula (0-4)	Sólskin(klst)	Meðalvindur (m/s)	Mesti vindur (m/s)	Hviða (m/s)
1.	9.5	11.6	8.4					1.2	6.1	11.1	17.4
2.	5.7	9.2	5.5	5.5	ri			3.6	2.2	5.2	9.0
3.	5.0	7.7	2.2	4.4	ri			8.6	3.2	9.1	14.9
4.	5.9	8.5	3.0	0.5	ri			3.4	1.9	3.2	5.1
5.	5.8	8.3	3.9	0.0	ri			3.2	5.6	8.1	14.6
6.	5.4	9.2	2.7	0.1	ri			8.7	3.4	8.0	12.7
7.	5.0	8.5	1.5					12.3	4.1	6.9	11.0
8.	4.9	8.8	0.0					15.9	2.3	4.4	8.2
9.	6.1	8.5	3.6					1.5	2.5	5.2	7.3
10.	5.1	7.7	2.3	1.5	sl			8.1	1.9	4.1	10.2
11.	4.5	8.4	-0.5					14.3	3.0	5.7	9.1
12.	4.7	8.3	0.8					11.6	3.7	8.3	14.6
13.	5.7	11.0	1.7					11.3	3.7	7.0	11.6
14.	6.4	9.7	2.4					16.2	2.8	4.3	6.5
15.	6.4	10.5	1.6					6.6	2.9	6.4	9.9
16.	7.6	10.4	5.8	0.7	ri			2.3	2.5	5.7	7.6
17.	5.8	9.4	4.0	4.6	ri			0.0	6.1	9.0	15.5
18.	8.4	13.5	5.5	1.1	ri			11.0	2.9	7.3	12.0
19.	5.6	11.4	2.0	0.0	ri			15.6	4.4	10.7	14.3
20.	4.2	7.5	0.5					4.1	5.0	10.8	16.2
21.	3.2	6.9	0.5	6.2	sl			9.2	4.3	8.2	12.7
22.	3.8	7.3	0.3	2.8	sl			13.2	3.1	6.5	10.8
23.	4.1	7.0	0.5	0.2	sl			14.0	3.0	6.3	9.1
24.	3.7	7.0	2.6	0.4	sl			5.3	4.9	10.3	16.9
25.	3.8	6.4	1.4	0.1	sl			10.5	5.9	8.8	14.3
26.	4.5	8.2	-0.6	0.0	ri			16.7	2.9	7.0	11.0
27.	5.1	9.9	-0.4					16.1	2.8	4.8	7.0
28.	8.1	11.8	3.3					9.4	4.3	6.6	10.6
29.	8.6	12.2	4.2					13.7	2.7	8.1	9.3
30.	11.1	15.7	6.0					5.9	2.2	7.7	8.5
31.	12.8	17.5	7.3					7.9	4.9	11.4	17.0

Meðalhiti	=	6.0 °C
Frávik frá meðaltali 1961-90	=	-0.3 °C
Meðalhámarkshiti	=	9.6 °C
Meðallágmarkshiti	=	2.6 °C
Úrkomumagn	=	28.1 mm
Hlutfall úrkomu af meðaltali 1961-90	=	63.9 %
Meðalvindhraði	=	3.6 m/s
Sólskinsstundir	=	282.4 klst

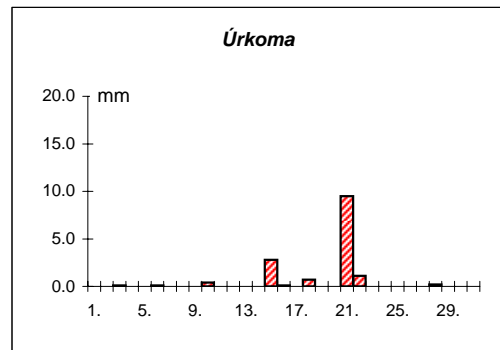
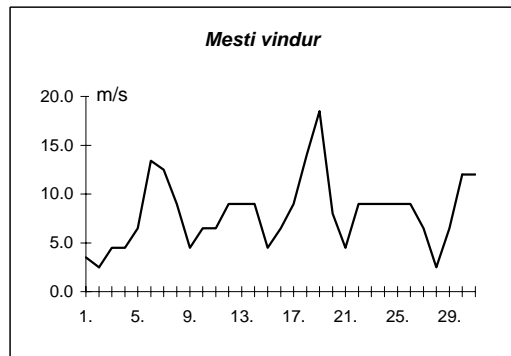
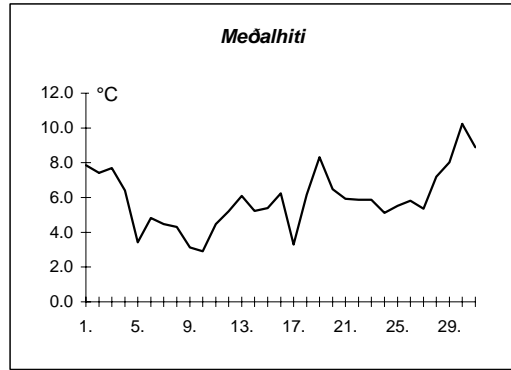


Dags	Meðalhiti (°C)	Hámark (°C)	Lágmark (°C)	Úrkoma (mm)	Úrkomategund	Snjóþýpt (cm)	Snjóhula (0-4)	Sólskin(klst)	Meðalvindur (m/s)	Mesti vindur (m/s)	Hviða (m/s)
1.	10.1	18.4	4.0					8.3	2.4	5.7	9.2
2.	10.1	17.7	9.4					4.4	3.0	4.7	8.6
3.	5.8	10.2	4.6	3.5	ri			8.2	2.3	8.2	11.7
4.	1.6	5.6	0.8	0.3	ri			0.1	3.9	5.8	8.7
5.	1.9	4.2	-0.1	0.1	ri			0.0	2.1	4.2	6.4
6.	2.0	4.5	0.0					2.0	3.0	6.6	10.2
7.	1.9	4.2	0.8	0.2	sl			1.3	3.8	6.9	12.5
8.	2.6	5.2	0.1	0.3	sl			0.0	1.6	3.8	6.9
9.	3.6	6.8	1.9					2.0	3.0	5.8	8.7
10.	0.9	6.0	0.8					4.8	3.3	6.3	9.2
11.	1.1	4.0	-2.5					0.0	3.1	6.4	10.6
12.	2.7	4.8	1.4	0.3	sl			1.5	7.2	10.2	15.9
13.	3.2	5.4	1.6	0.3	ri			3.3	3.8	7.6	11.1
14.	3.5	6.0	1.1	0.0	ri			3.6	3.4	6.2	9.1
15.	4.6	8.6	1.9	0.0	ri			9.0	2.5	6.0	9.2
16.	3.5	5.8	0.2					0.2	2.9	4.9	7.1
17.	4.4	7.2	2.8					1.6	3.2	6.5	13.5
18.	4.6	7.1	2.5					2.4	2.7	5.8	8.7
19.	3.3	5.5	2.7	0.2	ri			0.0	4.7	7.9	12.7
20.	6.8	13.0	2.1	0.4	ri			4.3	3.3	6.2	11.6
21.	6.0	10.5	2.2	0.0	ri			12.9	3.1	5.6	9.9
22.	4.6	8.9	-0.2	6.7	ri			9.8	2.4	7.5	12.1
23.	5.3	9.5	1.4					8.4	3.0	5.4	9.9
24.	2.0	6.3	1.4	0.8	sl			0.0	6.5	11.0	16.4
25.	2.6	5.2	1.2	4.6	sl			0.2	5.5	8.7	12.3
26.	2.4	4.4	0.6	0.4	sl			0.0	3.7	7.2	10.1
27.	3.9	7.0	1.5	0.1	sl			6.8	2.7	5.6	7.7
28.	7.5	14.4	-0.5					11.0	1.7	5.7	8.3
29.	9.5	14.0	6.2					9.3	3.1	5.5	9.1
30.	9.2	14.5	4.8					6.7	2.1	4.6	9.1
31.	8.9	13.3	4.0					1.6	1.9	5.9	10.9

Meðalhiti	=	4.5 °C
Frávik frá meðaltali 1961-90	=	-1.0 °C
Meðalhámarkshiti	=	8.3 °C
Meðallágmarkshiti	=	1.9 °C
Úrkomumagn	=	18.2 mm
Hlutfall úrkomu af meðaltali 1961-90	=	95.8 %
Meðalvindhraði	=	3.3 m/s
Sólskinsstundir	=	123.7 klst



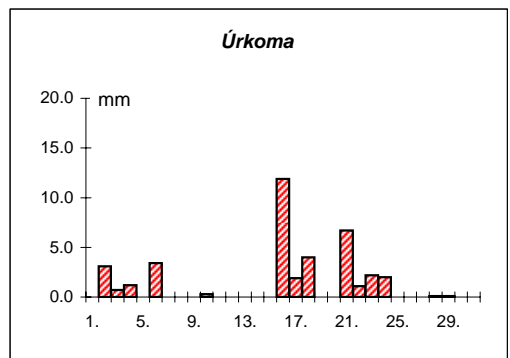
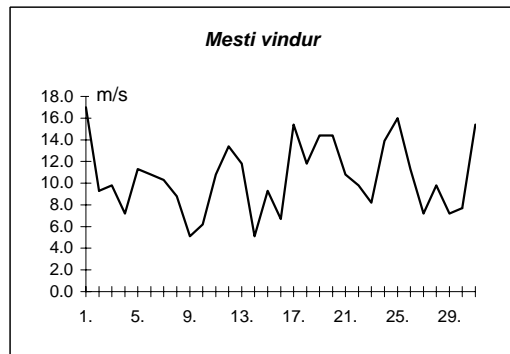
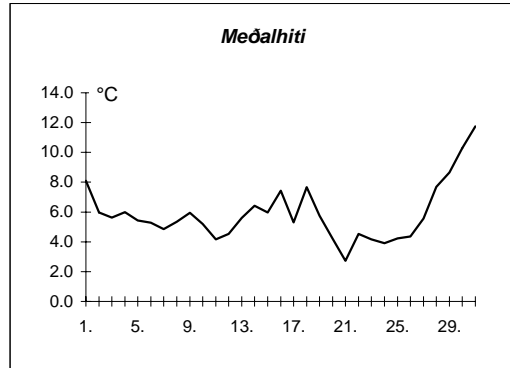
Dags	Meðalhiti (°C)	Hámark (°C)	Lágmark (°C)	Úrkoma (mm)	Úrkomutegund	Snjódýpt (cm)	Snjóhula (0-4)	Sólskín(klst)	Meðalvindur (m/s)	Mesti vindur (m/s)
1.	7.9	11.0	4.7						1.8	3.5
2.	7.4	8.8	6.5						2.0	2.5
3.	7.7	11.8	5.1	0.1	ri				2.9	4.5
4.	6.4	10.9	2.0						2.8	4.5
5.	3.4	10.1	3.0						3.8	6.5
6.	4.8	9.5	0.1	0.1	sn				5.9	13.4
7.	4.5	8.0	2.0						9.2	12.5
8.	4.3	9.2	1.4						5.6	9.0
9.	3.1	5.4	1.8						2.2	4.5
10.	2.9	7.0	-1.7	0.4	sl				3.5	6.5
11.	4.5	8.3	0.1						5.1	6.5
12.	5.2	9.5	3.7						4.9	9.0
13.	6.1	9.9	2.0						4.8	9.0
14.	5.2	9.1	0.5						3.7	9.0
15.	5.4	8.7	2.4	2.8	ri				2.6	4.5
16.	6.2	10.5	1.4	0.1	ri				3.9	6.5
17.	3.3	8.3	2.2						5.7	9.0
18.	6.2	8.5	2.4	0.7	sl				8.6	14.0
19.	8.3	11.9	5.8	0.0	ri				11.9	18.5
20.	6.5	11.0	4.1	0.0	ri				3.6	8.0
21.	5.9	8.1	4.8	9.5	ri				2.8	4.5
22.	5.9	10.7	-0.4	1.1	ri				3.9	9.0
23.	5.9	9.0	-0.1						3.5	9.0
24.	5.1	8.2	0.8						4.3	9.0
25.	5.5	8.7	3.3						7.0	9.0
26.	5.8	9.5	2.9						7.2	9.0
27.	5.4	9.0	2.7						4.3	6.5
28.	7.2	10.5	3.4	0.2	ri				0.8	2.5
29.	8.0	10.8	4.0						2.2	6.5
30.	10.2	14.6	4.3						7.4	12.0
31.	8.9	12.5	7.2	0.0	ri				6.8	12.0



Meðalhiti	=	5.9 °C
Meðalhámarkshiti	=	9.6 °C
Meðallágmarkshiti	=	2.7 °C
Úrkomumagn	=	15.0 mm
Meðalvindhraði	=	4.7 m/s

Útgefandi : **Veðurstofa Íslands**  
 Heimilisfang : **Bústaðavegur 9**  
**150 Reykjavík**

Dags	Meðalhiti (°C)	Hámark (°C)	Lágmark (°C)	Úrkoma (mm)	Úrkomutegund	Snjóþýpt (cm)	Snjóhula (0-4)	Sólskín(klst)	Meðalvindur (m/s)	Mesti vindur (m/s)	Hviða (m/s)
1.	8.1	9.7	8.0						8.8	17.0	22.1
2.	6.0	12.1	5.2	3.1	ri				4.3	9.3	11.8
3.	5.6	10.3	3.2	0.7	ri				5.9	9.8	14.4
4.	6.0	11.7	3.4	1.2	ri				2.6	7.2	9.8
5.	5.4	11.5	3.8	0.0	ri				7.0	11.3	14.9
6.	5.3	8.6	2.6	3.4	ri				5.1	10.8	15.4
7.	4.9	8.3	2.6						8.1	10.3	13.4
8.	5.4	8.6	1.5						4.1	8.8	11.3
9.	6.0	8.3	3.1	0.0	ri				3.1	5.1	7.2
10.	5.2	7.0	3.7	0.3	ri				3.3	6.2	8.8
11.	4.2	6.7	1.2						6.8	10.8	13.9
12.	4.5	6.9	2.5						9.6	13.4	17.0
13.	5.6	8.4	2.6						7.5	11.8	15.4
14.	6.4	10.2	1.6						2.3	5.1	6.7
15.	6.0	9.5	1.2						5.2	9.3	12.4
16.	7.4	10.0	5.4	11.9	ri				3.9	6.7	8.8
17.	5.3	10.2	4.5	1.9	ri				9.2	15.4	22.7
18.	7.7	11.3	4.8	4.0	ri				7.1	11.8	13.9
19.	5.8	11.2	3.4	0.0	ri				9.4	14.4	16.5
20.	4.2	9.5	1.4						7.2	14.4	20.6
21.	2.7	7.2	0.4	6.7	sl		2		5.6	10.8	16.0
22.	4.5	7.1	-0.1	1.1	sl				4.5	9.8	11.8
23.	4.2	7.5	1.3	2.2	sl				4.6	8.2	12.4
24.	3.9	7.2	2.3	2.0	sl				9.0	13.9	17.5
25.	4.2	6.7	1.5	0.0	sl				11.0	16.0	18.5
26.	4.4	7.4	1.4						7.6	11.3	13.9
27.	5.6	9.1	1.8						3.9	7.2	9.3
28.	7.7	10.7	1.7	0.1	ri				5.6	9.8	13.9
29.	8.7	12.3	4.5	0.1	ri				3.9	7.2	10.3
30.	10.3	13.5	6.4						4.1	7.7	9.8
31.	11.8	17.2	7.0						8.1	15.4	23.2



Meðalhiti	=	5.9 °C
Frávik frá meðaltali 1961-90	=	-0.2 °C
Meðalhámarkshiti	=	9.5 °C
Meðallágmarkshiti	=	3.0 °C
Úrkomumagn	=	38.7 mm
Hlutfall úrkomu af meðaltali 1961-90	=	59.2 %
Meðalvindhraði	=	6.1 m/s