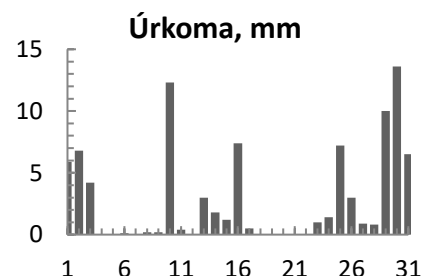
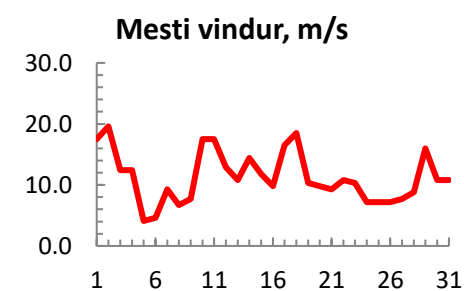
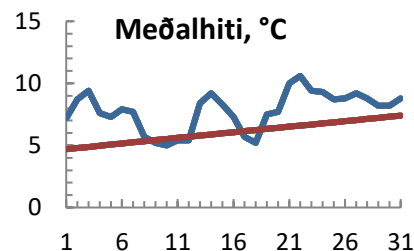


dagur	meðalhiti (°C)	Hámark (°C)	Lágmark (°C)	Úrkoma (mm)	Úrkomutegund	Snjódýpt (cm)	Snjóhula (0-4)	Sólskin (klst)	Meðalvindur (m/s)	Mesti vindur (m/s)	Hviða (m/s)
1	7.2	8.7	4.8	5.9	ri	0	0		10.2	17.5	24.2
2	8.7	9.6	7.6	6.8	ri	0	0		13.6	19.6	27.8
3	9.4	11.3	8.5	4.2	ri	0	0		10.4	12.4	18.0
4	7.6	11.4	6.5	0.0		0	0		8.1	12.4	15.4
5	7.3	10.7	5.6			0	0		2.3	4.1	6.2
6	7.9	14.7	2.5	0.1	ri	0	0		2.8	4.6	7.2
7	7.7	15.0	6.0			0	0		4.6	9.3	11.8
8	5.7	9.0	5.5	0.2	ri	0	0		3.6	6.7	9.3
9	5.2	7.1	4.4	0.2	ri	0	0		5.0	7.7	9.8
10	5.0	6.6	3.4	12.3	ri	0	0		12.6	17.5	23.2
11	5.4	8.3	3.3	0.4	ri	0	0		11.8	17.5	22.7
12	5.4	8.7	4.2			0	0		8.7	12.9	16.5
13	8.4	11.5	4.9	3.0	ri	0	0		7.1	10.8	14.9
14	9.2	12.6	7.4	1.8	ri	0	0		8.4	14.4	18.5
15	8.3	11.8	5.8	1.2	ri	0	0		7.0	11.8	15.4
16	7.3	10.3	6.4	7.4	ri	0	0		5.1	9.8	12.9
17	5.7	8.9	4.4	0.5	ri	0	0		10.2	16.5	20.1
18	5.2	7.6	3.7	0.0		0	0		13.4	18.5	23.2
19	7.5	11.9	3.8			0	0		4.2	10.3	12.4
20	7.7	11.7	3.7			0	0		5.0	9.8	11.8
21	10.0	15.0	5.1			0	0		6.2	9.3	12.4
22	10.6	15.5	7.6			0	0		6.8	10.8	12.9
23	9.4	13.3	8.7	1.0	ri	0	0		6.4	10.3	12.9
24	9.3	13.0	8.1	1.4	ri	0	0		4.6	7.2	9.3
25	8.7	13.1	7.8	7.2	ri	0	0		4.4	7.2	9.3
26	8.8	10.7	7.1	3.0	ri	0	0		4.2	7.2	9.3
27	9.2	11.0	8.6	0.9	ri	0	0		5.0	7.7	9.8
28	8.8	10.3	7.7	0.8	ri	0	0		5.3	8.8	10.8
29	8.2	10.1	6.4	10.0	ri	0	0		8.1	16.0	21.6
30	8.2	9.2	7.4	13.6	ri	0	0		7.2	10.8	16.5
31	8.8	11.5	6.1	6.5	ri	0	0		4.8	10.8	13.4



Meðalhiti (°C)	7.8
Frávik frá meðaltali 1961 - 1990 (°C)	1.7
Meðalhámarkshiti (°C)	11.0
Meðallágmarkshiti (°C)	5.9
Úrkomumagn (mm)	88.4
Hlutfall úrkomu af meðaltali 1961-1990 (%)	135.0
Meðalvindhraði (m/s)	7.0
