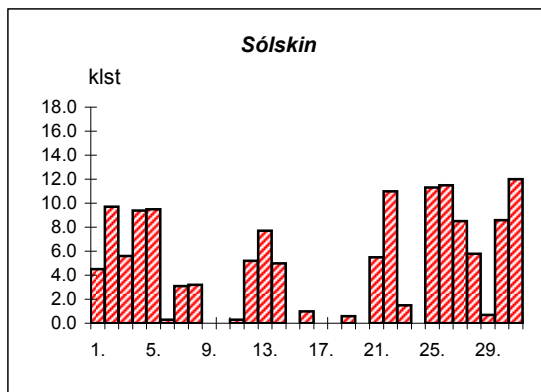
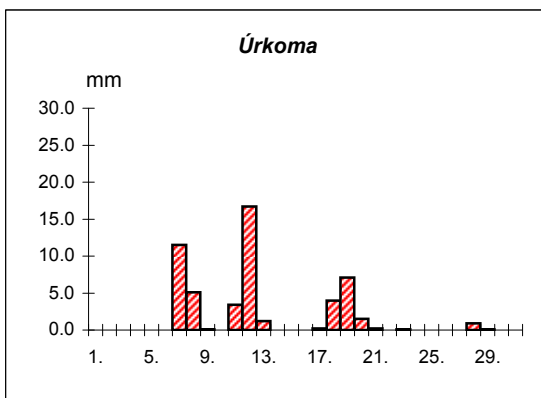
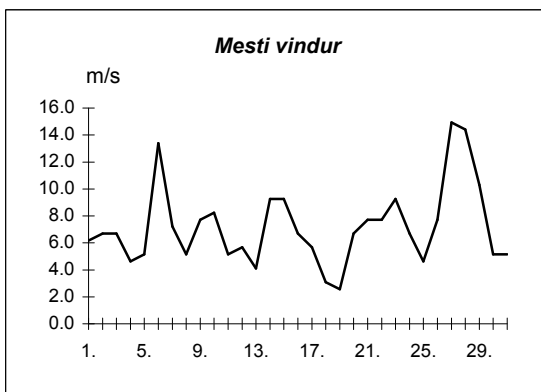
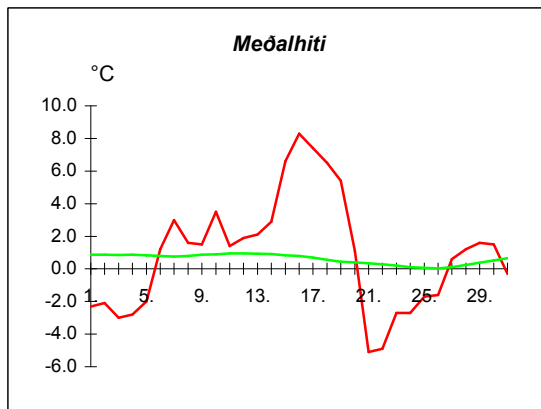


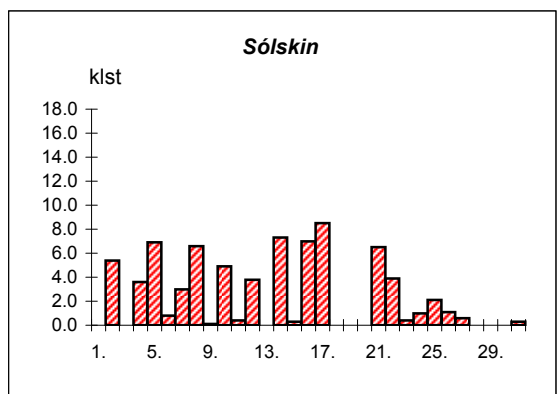
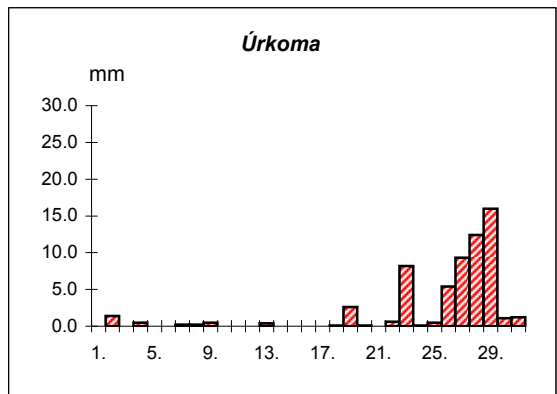
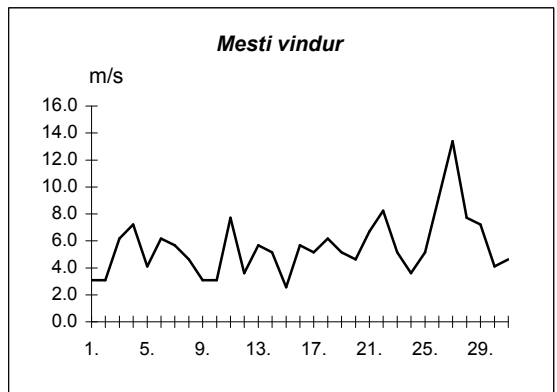
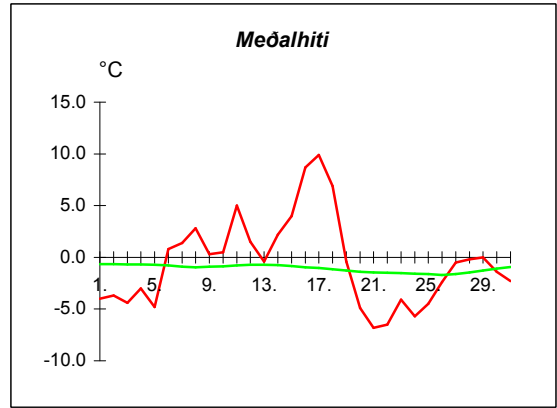
Dags	Meðalhiti (°C)	Hámark (°C)	Lágmark (°C)	Úrkoma (mm)	Úrkomutegund	Snjóþýpt (cm)	Snjóhúla (0-4)	Sólskin(klst)	Meðalvindur (m/s)	Mesti vindur (m/s)	Hviða (m/s)
1.	-2.3	1.1	-6.1	---			0	4.5	2.6	6.2	10.8
2.	-2.1	0.9	-3.9	0.0			0	9.7	2.5	6.7	10.8
3.	-3.0	0.4	-7.5	---			0	5.6	3.4	6.7	12.4
4.	-2.8	1.0	-6.0	---			0	9.4	1.2	4.6	8.2
5.	-2.0	3.3	-6.3	---			0	9.5	2.4	5.1	8.2
6.	1.2	4.7	-3.1	---			0	0.3	6.2	13.4	21.1
7.	3.0	5.7	0.6	11.5	sl		0	3.1	4.8	7.2	12.4
8.	1.6	4.7	1.0	5.1	sl		0	3.2	2.1	5.1	7.7
9.	1.5	3.9	-1.9	0.1	ri		0	0.0	5.1	7.7	14.9
10.	3.5	5.7	2.4	---			0	0.0	5.0	8.2	13.9
11.	1.4	5.6	-0.2	3.4	sl	13	4	0.3	3.3	5.1	9.3
12.	1.9	4.1	0.0	16.7	sl	10	4	5.2	3.2	5.7	9.3
13.	2.1	4.4	0.3	1.2	sl	6	4	7.7	2.0	4.1	6.7
14.	2.9	4.4	-0.6	0.0		5	4	5.0	4.3	9.3	14.4
15.	6.6	8.3	3.5	0.0			0	0.0	5.6	9.3	15.4
16.	8.3	9.9	7.4	0.0			0	1.0	5.0	6.7	10.8
17.	7.4	9.3	6.8	0.2	ri		0	0.0	2.1	5.7	8.2
18.	6.5	9.3	6.2	4.0	ri		0	0.0	2.0	3.1	4.6
19.	5.4	6.6	5.2	7.1	ri		0	0.6	1.5	2.6	4.1
20.	1.1	6.4	0.4	1.5	sl		0	0.0	4.0	6.7	11.8
21.	-5.1	0.4	-5.8	0.2	sl	0	4	5.5	4.9	7.7	12.4
22.	-4.9	-2.3	-8.2	0.0			2	11.0	4.9	7.7	12.9
23.	-2.7	0.0	-6.6	0.1	sn		2	1.5	5.1	9.3	14.9
24.	-2.7	0.3	-6.1	---			0	0.0	3.3	6.7	11.3
25.	-1.7	2.5	-4.9	---			0	11.3	2.5	4.6	7.2
26.	-1.6	2.0	-5.1	---			0	11.5	4.4	7.7	13.4
27.	0.6	2.9	-3.0	---			0	8.5	9.3	14.9	24.7
28.	1.2	3.1	0.0	0.9	sn		2	5.8	9.0	14.4	23.7
29.	1.6	3.2	0.4	0.1	sn		0	0.7	6.4	10.3	19.6
30.	1.5	4.8	-0.8	---			0	8.6	3.4	5.1	9.8
31.	-0.3	4.2	-3.0	---			0	12.0	3.2	5.1	9.8



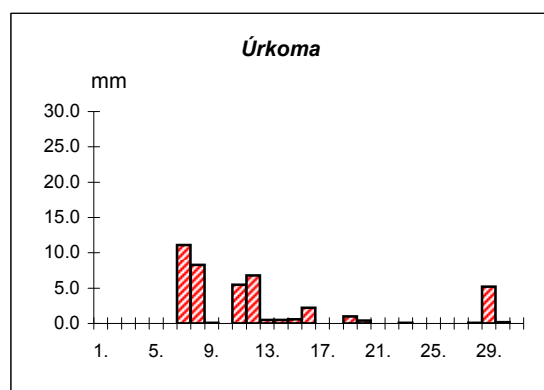
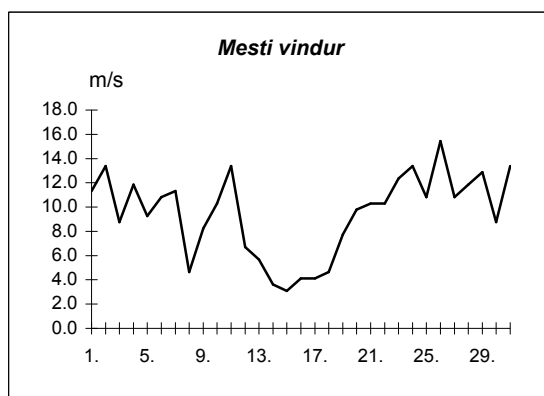
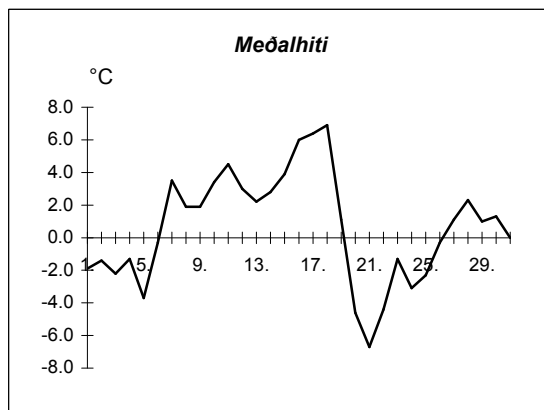
Meðalhiti	=	0.9 °C
Frávik frá meðaltali 1931-60	=	-0.6 °C
Meðalhámarkshiti	=	3.9 °C
Meðallágmarkshiti	=	-1.5 °C
Úrkomumagn	=	52.1 mm
Hlutfall úrkomu af meðaltali 1931-60	=	80.0 %
Meðalvindhraði	=	4.0 m/s
Sólskinsstundir	=	141.5 klst

Dags	Meðalhiti (°C)	Hámark (°C)	Lágmark (°C)	Úrkoma (mm)	Úrkomutegund	Snjódypt (cm)	Snjóhula (0-4)	Sólskin(klst)	Meðalvindur (m/s)	Mesti vindur (m/s)	Hviða (m/s)
1.	-4.0	-1.8	-6.6	---			0	0.0	1.3	3.1	5.1
2.	-3.7	-0.8	-6.6	1.4	sn	4	4	5.4	1.5	3.1	6.2
3.	-4.4	-2.0	-8.0	---		4	4	0.0	2.5	6.2	9.3
4.	-3.0	-0.8	-3.5	0.5	sn	4	4	3.6	2.0	7.2	10.8
5.	-4.8	-2.3	-5.2	0.0		5	4	6.9	2.0	4.1	7.2
6.	0.8	4.5	-8.4	---		4	4	0.8	3.5	6.2	12.9
7.	1.4	4.0	-1.6	0.2	sn	1	2	3.0	2.3	5.7	10.3
8.	2.8	5.5	1.6	0.2	sn		2	6.6	2.4	4.6	9.8
9.	0.3	4.2	-2.0	0.5	sn	3	4	0.1	1.3	3.1	5.1
10.	0.5	2.7	-0.3	---			0	4.9	0.9	3.1	6.2
11.	5.0	8.3	-1.3	---			0	0.4	3.6	7.7	12.4
12.	1.5	6.3	-2.3	---			0	3.8	1.8	3.6	6.2
13.	-0.4	4.6	-0.8	0.4	sl		0	0.0	2.4	5.7	9.3
14.	2.2	7.0	-3.6	0.0			0	7.3	2.3	5.1	9.8
15.	4.0	6.2	0.5	---			0	0.3	1.4	2.6	5.1
16.	8.7	13.2	5.0	---			0	7.0	3.5	5.7	12.4
17.	9.9	13.8	5.2	---			0	8.5	3.5	5.1	11.8
18.	6.9	12.6	5.6	0.1	ri		0	0.0	2.5	6.2	9.3
19.	-0.4	6.0	-1.5	2.6	sl		0	0.0	3.0	5.1	9.8
20.	-4.9	-1.5	-5.2	0.1	sl		0	0.0	2.5	4.6	10.3
21.	-6.8	-4.4	-7.9	0.0			0	6.5	3.3	6.7	10.3
22.	-6.5	-5.5	-9.0	0.6	sn		0	3.9	3.2	8.2	12.4
23.	-4.1	-2.0	-6.0	8.2	sn	12	4	0.4	2.5	5.1	11.8
24.	-5.7	-2.4	-10.0	0.1	sn	10	4	1.0	1.2	3.6	5.7
25.	-4.5	-1.2	-9.0	0.5	sn	12	4	2.1	1.5	5.1	7.7
26.	-2.4	-1.0	-5.0	5.4	sn	16	4	1.1	3.3	9.3	13.4
27.	-0.5	1.0	-5.0	9.3	sn	20	4	0.6	6.5	13.4	19.0
28.	-0.2	1.0	-1.5	12.4	sn	30	4	0.0	5.2	7.7	12.9
29.	0.0	0.9	-0.4	16.0	sn	45	4	0.0	4.4	7.2	12.9
30.	-1.4	0.7	-1.7	1.1	sn	45	4	0.0	2.0	4.1	9.8
31.	-2.3	0.8	-3.2	1.2	sn	45	4	0.3	2.3	4.6	8.2

Meðalhiti	=	-0.5 °C
Frávik frá meðaltali 1931-60	=	-0.2 °C
Meðalhámarkshiti	=	2.5 °C
Meðallágmarkshiti	=	-3.2 °C
Úrkomumagn	=	60.8 mm
Hlutfall úrkomu af meðaltali 1931-60	=	145.0 %
Meðalvindhraði	=	2.6 m/s
Sólskinsstundir	=	74.5 klst



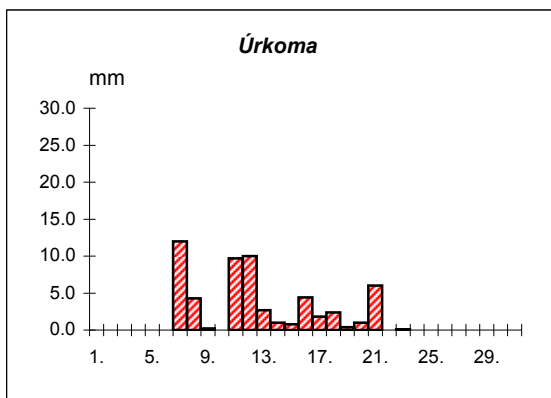
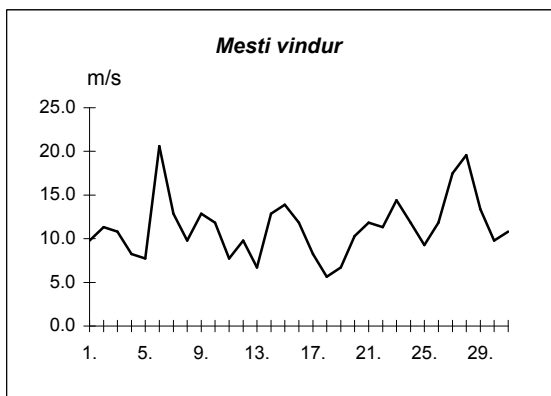
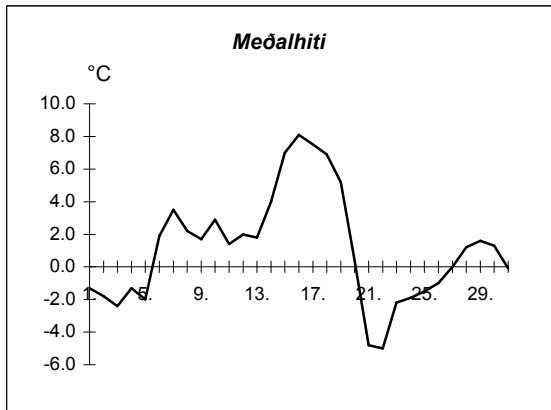
Dags	Meðalhiti (°C)	Hámark (°C)	Lágmark (°C)	Úrkoma (mm)	Úrkomutegund	Snjóþýpt (cm)	Snjóhula (0-4)	Sólskin(klíst)	Meðalvindur (m/s)	Mesti vindur (m/s)	Hviða (m/s)
1.	-1.9	0.3	-3.8	---			0		7.0	11.3	19.0
2.	-1.4	1.0	-2.2	---			0		5.3	13.4	19.6
3.	-2.2	0.7	-4.7	---			0		4.0	8.8	11.3
4.	-1.3	1.5	-5.0	---			0		5.0	11.8	16.0
5.	-3.7	0.2	-5.2	---			0		3.8	9.3	12.4
6.	-0.3	2.5	-7.7	0.0			0		5.8	10.8	16.5
7.	3.5	5.8	0.8	11.1	sl	1	2		3.1	11.3	17.5
8.	1.9	5.6	0.2	8.3	ri		0		2.1	4.6	7.2
9.	1.9	4.8	-1.4	0.1	ri		0		3.9	8.2	12.4
10.	3.4	4.6	0.0	0.0			0		6.5	10.3	13.9
11.	4.5	6.2	3.9	5.5	ri		0		6.2	13.4	18.0
12.	3.0	5.5	1.0	6.8	ri		0		2.2	6.7	8.8
13.	2.2	7.0	0.2	0.5	ri		0		2.3	5.7	9.3
14.	2.8	5.0	-0.2	0.5	ri		0		1.5	3.6	5.1
15.	3.9	5.9	1.3	0.6	ri		0		1.0	3.1	4.1
16.	6.0	8.6	3.4	2.2	ri		0		1.9	4.1	5.1
17.	6.4	12.2	0.8	---			0		1.9	4.1	4.6
18.	6.9	13.6	1.8	---			0		2.0	4.6	7.7
19.	1.1	9.2	-0.6	1.0	ri		0		3.9	7.7	11.3
20.	-4.6	0.7	-5.6	0.4	sl	1	4		6.0	9.8	13.9
21.	-6.7	-4.8	-9.0	0.0		1	2		6.5	10.3	17.5
22.	-4.4	-0.5	-7.8	---			0		5.5	10.3	13.9
23.	-1.3	1.6	-4.2	0.1	sl	0	2		6.6	12.4	18.0
24.	-3.1	0.7	-4.7	0.0			0		9.4	13.4	17.0
25.	-2.3	1.7	-6.8	---			0		6.1	10.8	15.4
26.	-0.3	2.5	-2.2	---			0		8.9	15.4	21.1
27.	1.1	4.0	-2.4	---			0		5.7	10.8	15.4
28.	2.3	4.3	-1.0	0.1	sn	1	2		7.2	11.8	18.0
29.	1.0	3.6	-0.2	5.2	sn	11	4		7.1	12.9	22.7
30.	1.3	3.5	0.5	0.2	sn	4	4		5.1	8.8	13.9
31.	0.0	2.9	-1.3	---		1	2		8.3	13.4	19.6



Meðalhiti	=	0.6 °C
Meðalhámarkshiti	=	3.9 °C
Meðallágmarkshiti	=	-2.0 °C
Úrkomumagn	=	42.6 mm
Meðalvindhraði	=	4.9 m/s

Útgefandi : **Veðurstofa Íslands**
 Heimilisfang : **Bústaðavegur 9**
150 Reykjavík

Dags	Meðalhiti (°C)	Hámark (°C)	Lágmark (°C)	Úrkoma (mm)	Úrkomutegund	Snjódýpt (cm)	Snjóhúla (0-4)	Sólskin(klíst)	Meðalvindur (m/s)	Mesti vindur (m/s)	Hviða (m/s)
1.	-1.3	0.5	-5.3	---			0		6.9	9.8	13.4
2.	-1.8	2.7	-3.6	---			0		5.0	11.3	14.9
3.	-2.4	0.1	-5.7	---			0		7.1	10.8	13.9
4.	-1.3	1.0	-2.3	---			0		4.6	8.2	11.3
5.	-2.0	2.6	-5.9	---			0		3.4	7.7	10.3
6.	1.9	5.3	-1.4	---			0		9.7	20.6	28.3
7.	3.5	5.7	0.6	12.0	sl		2		7.8	12.9	18.5
8.	2.2	5.4	1.4	4.3	sl		2		3.4	9.8	11.3
9.	1.7	4.0	-1.0	0.2	sl		0		7.0	12.9	16.5
10.	2.9	7.0	0.7	0.0			0		5.1	11.8	17.0
11.	1.4	3.5	-0.1	9.7	sl	5	4		3.7	7.7	11.3
12.	2.0	4.6	-0.3	10.0	sl		0		4.7	9.8	12.9
13.	1.8	5.5	-0.8	2.7	sl		0		3.0	6.7	8.2
14.	4.0	5.6	0.8	1.0	sl		0		7.8	12.9	17.0
15.	7.0	8.1	4.7	0.8	ri		0		11.1	13.9	19.6
16.	8.1	9.3	7.1	4.4	ri		0		7.9	11.8	15.4
17.	7.5	8.7	6.3	1.8	ri		0		5.4	8.2	10.3
18.	6.9	8.4	6.4	2.4	ri		0		4.3	5.7	7.2
19.	5.2	7.6	5.2	0.4	ri		0		4.9	6.7	8.2
20.	0.4	5.6	-0.5	1.0	sl		2		7.9	10.3	13.9
21.	-4.8	1.4	-5.6	6.0	sl	0	4		8.8	11.8	14.9
22.	-5.0	-2.5	-7.8	0.0		0	2		9.1	11.3	18.0
23.	-2.2	-0.2	-5.0	0.1	sn	0	2		9.5	14.4	19.0
24.	-1.9	0.0	-3.6	---			2		7.5	11.8	15.4
25.	-1.5	1.0	-4.7	---			2		5.8	9.3	12.9
26.	-1.0	1.4	-3.5	---			2		9.3	11.8	17.5
27.	0.0	2.0	-2.4	---			0		12.9	17.5	22.7
28.	1.2	2.7	0.3	---			0		12.6	19.6	23.7
29.	1.6	2.7	0.5	0.0			2		10.6	13.4	18.0
30.	1.3	3.7	-0.2	---			0		6.8	9.8	13.4
31.	-0.1	4.1	-1.4	---			0		7.5	10.8	13.9



Meðalhiti	=	1.1 °C
Frávik frá meðaltali 1931-60	=	-0.5 °C
Meðalhámarkshiti	=	3.8 °C
Meðallágmarkshiti	=	-0.9 °C
Úrkomumagn	=	56.8 mm
Hlutfall úrkomu af meðaltali 1931-60	=	66.0 %
Meðalvindhraði	=	7.1 m/s